

SONY



SONY BLU-RAY DISC™ PLAYERS Watch Blu-ray movies in crystal clear full HD 1080p, or connect to the internet and access an assortment of movies, videos and music from Netflix®, YouTube™, Pandora® and many more. Use your iPhone®, iPod touch® or Android device as a remote control when you download the free remote app. Other features include USB input, Gracenote™ metadata service, DLNA capability, Cross Search and Dolby® TrueHD internal decoding. I/O includes 2-channel RCA, coaxial, and optical audio outs, as well as composite and HDMI video outs. USB and Ethernet ports are also included.

NEW!

ITEM	DESCRIPTION	PRICE
BDPS390	Blu-ray player, WiFi	129.99
BDPS590	Blu-ray player, 3D compatible, WiFi	149.99
TDGBR250/B	3D glasses, black	69.99

TASCAM



TASCAM DV-D01U RACKMOUNTABLE SINGLE DISC DVD PLAYER The DV-D01U is a rackmountable single-disc player with a powered loading tray. The player reads DVD video, DVD audio (2-channel only), video CD, CD-DA, MP3, WMA, .WAV, JPEG, ASF, MPEG-2/MPEG-1, and DivX. It is capable of playing back properly finalized DVD +R/+RW discs. Outputs consist of HDMI audio/video out and composite, S-video, and component video outputs. Rear panel stereo outputs are unbalanced (RCA) and digital outputs are optical. Digital outputs can pass Dolby Digital and DTS surround streams for later decoding. The DV-D01U provides extensive bi-directional RS232 serial control and an I/R remote control is included.

ITEM	DESCRIPTION	PRICE
DV001U	Rackmountable DVD player, 1RU	CALL



TASCAM BD-R2000 HD/BLU-RAY/DVD RECORDER Captures standard or high-definition video to hard drive, SD card, DVD or Blu-ray™ media – with authoring and editing. It can store video on the hard drive and burn to standard DVD-Video or Blu-ray format. It supports video input from DV/HDV cameras and S-Video, or files on USB 2.0 or SD/SDHC cards. Disc playback is seamless, without pauses between scenes. Scenes can be trimmed, separated and arranged on a menu. One-touch dubbing allows an entire disc, drive or card to be stored on the hard drive, then burned to Blu-ray disc at up to 32x speed. I/O includes HDMI out, composite, component and S-Video out, optical digital out, S-Video and composite input and RS232C serial control port.

ITEM	DESCRIPTION	PRICE
BDR2000	HD/Blu-ray/DVD recorder	2199.99
BDR25PWX25CB	Single layer BD-R discs, 25GB, 25pk (by TDK)	18.34
TS32GSDHC4	SDHC card, 32GB, class 4 (by Transcend)	29.08

YAMAHA



YAMAHA BD-S671 3D BLU-RAY PLAYER This Blu-ray player features Blu-ray 3D playback, network functionality (for Netflix, YouTube, etc.), control via iPhone or Android app, and SCENE with CEC which allows for easier operation. It has 1080p/24Hz-compatible HDMI video output, USB, digital audio out, component and composite out and 2-ch audio out. DLNA certified.

NEW!

ITEM	DESCRIPTION	PRICE
BD-S671BL	3D-ready Blu-ray player	CALL
HDMI-HDMI-6-INDUSTRL	6' HDMI cable by Cable Up	CALL

Blackmagicdesign



BLACKMAGIC DESIGN SMARTVIEW DUO DUAL LCD MONITOR Features (2) 8" LCD screens in a compact rackmount design, perfect for studios and portable setups. Other features include 3-color integrated tally borders, international power supply, and ethernet connections. Has SDI inputs with loop out, switchable between SD, HD-SDI, & 3Gb/s SDI, and a USB 2.0 update port.

ITEM	DESCRIPTION	PRICE
SMARTVIEW-DUO	Dual 8" LCD Monitor	660.25

datavideo



DATAVIDEO TLM-702 7" X2 TFT LCD MONITORS The TLM-702 includes two 7" TFT LCD monitors (1440 x 234) in a standard 19" rackmount, 3RU high. It can tilt up to +/- 30° and lock in any position. Controls include flip, 4:3 aspect, 16:9 aspect, mirror image, source select, contrast, brightness, color, and tint.

ITEM	DESCRIPTION	PRICE
TLM702	7" x 2 TFT LCD monitor, 3RU	816.00
TLM702MH	TLM-702 monitor w/holder to attach to SE-500 switcher	1008.00



DATAVIDEO TLM433 THREE 4.5" LCD MONITOR UNIT This rackmountable unit has adjustments for contrast, brightness, color & tint and an LED tally light indicator above each screen. Includes 3 composite video BNC outs for loop-through.

ITEM	DESCRIPTION	PRICE
TLM433	Rackmount 3x 4.5" LCD broadcast monitors, 2RU	960.00

DATAVIDEO TLM-170H LCD MONITOR The TLM-170H is a 17.3", HD-SDI desktop monitor. It features a 1600 x 900 resolution and a backlit LED screen (desktop only). It also has built in stereo speakers and an audio level indicator. Connections include two CV inputs, one S-video, HD-YUV, HD-SDI and HDMI.



ITEM	DESCRIPTION	PRICE
TLM-170H	Desktop monitor w/ backlit LED	1632.00
TLM-170HM	1U rack-mounted LCD monitor	2112.00
TLM-170HR	7U rack-mounted LCD monitor	1642.80

DATAVIDEO TLM-700HD 7" HD/SD-SDI FIELD MONITOR Suited for use in the field or studio, this unit can be powered with 12V DC or AC and automatically switches between PAL and NTSC. It features a standard V-mount that allows you to use universal batteries. A sunshade is included for in-the-field applications. The TLM-700HD can be calibrated with an internal color bar, color temperature, color select and the "blue-only" mode. Inputs include HD/SD-SDI, HDMI, YUV component and composite and a 15-pin D-sub connector for tally control. Includes 12V DC power supply, battery not included.



ITEM	DESCRIPTION	PRICE
TLM700-HD	7" TFT LCD field monitor with HD/SD-SDI input	960.00
MO-TLM700	Porta-Brace case for TLM700HD	181.41
ETS	IDX Li-Ion V-Mount battery 71Wh/4.8Ah, 14.8V	259.00

- AUDIO
- VIDEO
- MUSIC
- COMPUTER AV
- VIDEO
- LIGHTS
- ACCESSORIES

ikan

IKAN LCD MONITORS The VH7 is a 7" monitor with a 1024x600 resolution, a 16:9 aspect ratio and can be powered with the provided AC107 DV battery plate. Also features a 1/4"-20 threaded hole for hot shoe mounting and 62mm thread spacing for a battery plate. Includes HDMI, VGA and 2 composite inputs. The VL7 is a great entry-level HD monitor for HDSLR use. It has a 7" screen with 800x480 resolution with a switchable 16:9 & 4:3 aspect ratio. It has HDMI and composite inputs and includes the ikan BP2T DV battery adapter plate.



ITEM	DESCRIPTION	PRICE
VH7E-C-DK	Deluxe Kit for Canon (includes AV cables, AC adapter, shoe mount, battery plate, IBC950 battery, charger, hard case)	549.00
VH7E-P-DK	Deluxe Kit for Panasonic (same as above w/ ICHD54 battery instead)	549.00
VH7E-S-DK	Deluxe Kit for Sony (same as above w/ ICH750 battery instead)	549.00
VL7-G-DK	7" monitor w/HDMI & composite and Canon battery plate	399.00
VL7-P-DK	7" monitor w/HDMI & composite and Panasonic battery plate	399.00
VL7-S-DK	7" monitor w/HDMI & composite and Sony battery plate	399.00

IKAN TFT LCD MONITORS These small, versatile TFT LCD monitors are lightweight and are ideal for all DV cameras. They feature 4:4 or 16:9 aspect ratios, onscreen display control, anti-glare screens, wide viewing angles, and are NTSC/PAL.



ITEM	DESCRIPTION	PRICE
V17E	17" HD desktop/rackmount LCD monitor, 1366x768, HDMI, DVI, VGA, component, s-video, composite in	1095.00
V5600-C	5.6" HD LCD Monitor w/ Canon Battery Plate	549.00
V5600-P	5.6" HD LCD Monitor w/ Panasonic Battery Plate	549.00
V5600-S	5.6" HD LCD Monitor w/ Sony Battery Plate	549.00
VG7-DK-C	Deluxe Kit for Canon - L series battery w/VG7 monitor, cables, AC adapter, shoe mount, sunhood, battery, battery charger & hard case	449.00
VG7-DK-P	Deluxe Kit for Panasonic - D54 series battery w/VG7 monitor, cables, AC adapter, shoe mount, sunhood, battery, battery charger & hard case	449.00
VG7-DK-S	Deluxe Kit for Sony - 900 series battery w/VG7 monitor, cables, AC adapter, shoe mount, sunhood, battery, battery charger & hard case	449.00
V8000HDMI-C	8" monitor w/Canon DV battery adapter plate, 16:9/4:3 widescreen SD/H	745.00
V8000HDMI-P	Same as above for Panasonic	745.00
V8000HDMI-S	Same as above for Sony	745.00

IKAN VX SERIES MONITOR KITS

These LCD monitors have a field production output of 1024x600 pixels and a 400:1 contrast ratio. The VX7e inputs include HD-SDI, HDMI, component and composite while the VX9e adds an S-Video input. Additional features include over/under-scan, blue gun calibration, and moveable pixel-to-pixel zoom. There are 1/4-20 threaded mounting holes are on all 4 sides. Kits include a monitor, shoe mount, hard case, AC adapter, battery plate, charger and battery. Optional pro battery mounts for Anton-Bauer and V-mount batteries are available.



ITEM	DESCRIPTION	PRICE
VX7E-C-DK	Deluxe 7" LCD monitor kit, Canon	1145.00
VX7E-P-DK	Deluxe 7" LCD monitor kit, Panasonic	1145.00
VX7E-S-DK	Deluxe 7" LCD monitor kit, Sony	1145.00
VX9E-C-DK	Deluxe 8.9" LCD monitor kit, Canon	1119.00
VX9E-P-DK	Deluxe 8.9" LCD monitor kit, Panasonic	1199.00
VX9E-S-DK	Deluxe 8.9" LCD monitor kit, Sony	1199.00
VXPBK-A	Gold mount battery plate kit	149.00
VXPBK-S	V-mount battery plate kit	149.00

JVC JVC BROADCAST LCD MONITORS

Full 1080p image displays that offer a wide color range and wider viewing. A 3G/dual-link HD-SDI input enables digital monitoring of 1080/60p signals. Includes digital captioning, superior scaling and de-interlacing, 10bit 4:4:4 1080p processing. Models also have 12-channel audio level meter with peak hold. Inputs include DVI-D, component and composite video as well as RCA audio-in. The DT3D24GIU uses passive 3D technology to display flicker-free images and is compatible with side-by-side and line-by-line 3D formats.



ITEM	DESCRIPTION	PRICE
DTV17G1Z	17" HD LCD, 1080p, with HD/SD-SDI in	2695.00
DTV24G11Z	24" HD LCD, 1080p, with HD/SD-SDI in	CALL
DT3D24G1U	24" HD 3D LCD monitor with 3G & dual HD-SDI in	CALL
RAK17LC06S	Rackmount kit for DTV17G1Z	140.00
RAK2024LCD	Rackmount kit for DTV 20"/24" LCDs	173.05

Marshall Electronics



MARSHALL ELECTRONICS MD SERIES LCD RACK DISPLAYS WITH MODULAR INPUTS The MD series of rack monitors feature interchangeable input modules. The V-MD434 & V-MD503 units feature advanced front panel menu and feature control. The V-MD702, V-MD171X, and V-MD201 feature composite & component inputs. All models feature false color filter, markers, freeze function, status display, color temp presets, RGB gain/bias adjust, blue gun, pixel-to-pixel, hard tally. V-MD171X & V-MD201 monitors can be used on desktops with purchase of optional stand. Monitors can be purchased with 3GSDI input modules already installed.

ITEM	DESCRIPTION	PRICE
V-MD434	2RU (4) 4.3" 800x480 widescreen rack monitor unit, w/front-panel menu/feature control, w/o input modules	2597.85
V-MD503	2RU (3) 5" 800x480 rack monitor unit, w/front-panel menu/feature control, w/o input modules	2011.35
V-MD563	3RU (3) 5.6" LED-backlit 1280x800 rack monitor unit w/composite/component inputs	2988.85
V-MD72	3RU (2) 7" LED-backlit 800x480 rack monitor unit, w/o input modules	1723.85
V-MD702	Same as V-MD72, but w/composite/component inputs	1907.85
V-MD171X	6RU 17" 1900x1200 rack monitor w/composite/component inputs	1896.35
V-MD201	7RU 20" 1600x900 rack monitor w/composite/component inputs	1493.85

Input Modules for V-MD434, V-MD503

MD-3GSDI-B	3G/HD/SDI input module w/loop-through	320.85
MD-HDSIX2-B	2-channel HDSDI input module w/switched output	412.85
MD-HDMI2-B	2-channel HDMI input module	166.75
MD-DVII-B	DVI-I input module	166.75

Input Modules for All Other Models

MD-3GSDI-A	3G/HD/SDI input module w/loop-through	320.85
MD-HDSIX2-A	2-channel HDSDI input module w/switched output	412.85
MD-HDMI2-A	2-channel HDMI input module	166.75
MD-DVII-A	DVI-I input module	166.75

Desktop Stands

V-ST15	Desktop stand for V-MD171X rack monitor	34.44
V-ST20	Desktop stand for V-MD201 rack monitor	45.94

V-R653-IMD-TE



V-R231-IMD-HSDI



MARSHALL ELECTRONICS IN-MONITOR DISPLAY-CAPABLE LCD MONITORS

Allows UMD (Under-Monitor Display) information and tallies to be displayed directly within the monitor. Available features include on-screen video time code, 3-color "Soft" Tallies, audio presence indicator and easy menu navigation. Integrates easily with existing Tally systems and controllers, while supporting Image Video, NVISION, TSL, and MEI protocols. All except the Quad Viewer monitors include HDSDI/SDI inputs and can be used as standalone displays with HDSDI loop-through. Quad Viewer models offer full-screen mode for video and DVI and quad-split mode (via built-in HD quad splitter) which is scaled to fit onscreen in the highest resolution. The Quad Viewer models have (4) independent HDSDI inputs, (1) DVI input, field-upgradeable firmware, and an RS422/485 port with pass-through. Dual Link/Waveform models feature 10-bit video path with 3G capable monitors and can display live video, audio bars, waveform and vectorscope in quad-view mode. They also have (2) 3G/HD/SDI inputs, Dual Link, a DVI input, RS485 firmware updating, and closed captioning (CEA-608-B, CEA-708-B). The NCB-1005 allows connected IMD monitors to be controlled by PC via Ethernet.

ITEM	DESCRIPTION	PRICE
V-R653P-IMD-TE	(3) 6.5" HD/SD monitors in 2RU rack unit, 1024xRGBx768	CALL
V-R653SB-IMD	As above but outdoor version	CALL
V-R1041-IMD-TE4U	10.4" HD/SD rackmount monitor, 4RU, 1024xRGBx768	2068.85
V-R1042-IMD-TE4U	(2) 10.4" HD/SD monitors in 4RU rack unit, 1024xRGBx768	3444.25
V-R171X-IMD-HSDSI	17" HD/SD rackmount monitor, 6RU	2413.85
V-R201-IMD-TE	20" HD/SD rackmount monitor, 6RU, 1680xRGBx1050	1930.85
VP-LCD171H-ST-01	VESA mount stand w/pivot and tilt for 20", 23" monitors	182.85
NCB-2010	Network control box for IMD monitors	2988.85
V-R171X-IMD-HSDSI	17" rackmount monitor, 6RU, 1920xRGBx1200	2413.85
QV171X-HSDSI	17" HD rackmount Quad Viewer monitor, 6RU, 1920x1200	3448.85
V-ST15	Desktop stand for Quad Viewer monitors	34.44
V-R171X-DLW	17" Dual link/waveform monitor, 1920x1200	3333.85
V-R261-DLW	26" Dual link/waveform monitor, 1920x1200	CALL



Follow us!

We have the largest selection of hard to find items. Call us!

Marshall Electronics



V-R44P



V-R72DP-2C

MARSHALL ELECTRONICS PROFESSIONAL LCD RACK MOUNT MONITORS

These come in a wide variety of size and mounting arrangements. Displays are lightweight, have a shallow depth, run cool and tilt for optimum viewing. Many models feature TFT MegaPixel™ displays for better images and pixel density compared to other monitors. Configurations are available with HDS/SDI, SDI, DVI, Component HD/SD, and composite video inputs.

ITEM	DESCRIPTION	PRICE
V-R43P	Triple 4" in 2RU, composite ins on each	1006.25
V-R44P	Four 4" in 2RU, composite ins on each	1263.85
V-R573P	Triple 5.7" in 3RU, 2 composite ins on each	1378.85
V-R653P-HDS/SDI	Triple 6.5" HD in 3RU, SDI/HDS/SDI inputs, composite & component ins	3103.85
V-R70P-HDS/SDI	Standalone 7" HD widescreen 1.2 TFT-Megapixel, video assist monitor, HDS/SDI/SDI ins	1608.85
V-R70-1M	Rackmount adapter for V-R70P units	59.80
V-R72DP-2C	Dual 7" widescreen in 3RU, 2 composite ins on each	1608.85
V-R72P-2SD	Dual 7" in 3RU, 800x480, has composite, S-Video, component HD/SD (YpBPr), and SDI ins on each	2183.85
V-R72P-2HD	Dual 7" multiformat widescreen 1.2 Megapixel in 3RU, has composite, s-video, component HD/SD (YpBPr) & HD/SDI ins on each	3161.35
V-R82SB-AFHD	Dual 8.4" backlit/for outdoor use in 4RU, 800x600, with HDS/SDI, component, composite, s-video, DVI, SXGA ins on each	CALL

MARSHALL ELECTRONICS PORTABLE FIELD MONITORS

These models are designed for outdoor and high ambient light situations. The LCD70XP and LCD651STX models have expanded hi-definition input options (HDMI, 3GSDI, e.g.), false color exposure assist, and peaking filter focus assist. The LCD651STX and LCD70XP models are also available with Canon, JVC, Panasonic and Sony battery mounts.



V-LCD65SB-HDA

ITEM	DESCRIPTION	PRICE
Sunbright Models		
V-LCD65SB-HDA	6.5" Hi-res Sunbright monitor, RGB, 640x480	1493.85
V-LCD84SB-AFHD	8.4" Hi-def Sunbright monitor, RGB, 800x600, also has SDI/HDS/SDI, VGA, DVI & S-Video inputs	1608.85
V-LCD15SB-AFHD-DT	15" Hi-def Sunbright monitor, 1024xRGBx768, also has SDI/HDS/SDI, VGA, DVI & S-Video inputs, includes desktop stand	2528.85
5" Model		
V-LCD50-HDMI	5" HDMI camera-top monitor, 800x480, powered w/ AA batteries	516.35
6.5" Models		
V-LCD651STX-HDA	6.5" Hi-res camera-top monitor, 1024x768	1528.35
V-LCD651STX-HDA-AB	As above w/Anton Bauer battery adapter	1631.85
V-LCD651STX-HDA-VM	As above w/V-Mount battery adapters	1631.85
V-LCD651STX-HDMI	6.5" Hi-res camera-top monitor w/HDMI in, 1024x768	1723.85
V-LCD651STX-HDMI-AB	As above w/Anton Bauer battery adapter	1723.85
V-LCD651STX-HDMI-VM	As above w/V-Mount battery adapters	1723.85
V-LCD651STX-3GSDI	6.5" Hi-res camera-top monitor w/3G/HD/SD in, 1024x768	1769.85
V-LCD651STX-3GSDI-AB	As above w/Anton Bauer battery adapter	1884.85
V-LCD651STX-3GSDI-VM	As above w/V-Mount battery adapter	1884.85
7" Models		
V-LCD70XP-HDMIPT	7" Hi-res camera-top monitor w/HDMI in, 800x480	895.85
V-LCD70XP-HDMIPT-AB	As above w/Anton Bauer battery adapter	1010.85
V-LCD70XP-HDMIPT-VM	As above w/V-Mount battery adapter	1010.85
V-LCD70XP-3GSDI	7" Hi-res camera-top monitor w/3G/HD/SD in, 800x480	987.85
V-LCD70XP-3GSDI-AB	As above w/Anton Bauer battery adapter	1102.85
V-LCD70XP-3GSDI-VM	As above w/V-Mount battery adapter	1102.85

Marshall Electronics

MARSHALL ELECTRONICS LYNX™ SERIES LCD MONITORS

Displays are lightweight, shallow in depth, run cool and tilt for viewing. Many models feature TFT MegaPixel™ displays offering the highest pixel density for improved images compared to similar CRT and standard LCD products. Available in 10" to 19" displays. Significant improvements have been made to brightness, contrast ratio, and viewing angles. Various input configurations available. MegaPixel models feature screens calibrated to SMPTE/IBU standards for color gamut and color temperature.



ITEM	DESCRIPTION	PRICE
M-LYNX-10	10" 4:3 LCD monitor, 800x600. Has w/composite, S-video, VGA & stereo inputs	306.03
M-LYNX-10W	10" TFT 16:9 LCD monitor w/rear speakers, remote control, 1024x600, composite, S-video, DVI, VGA & stereo audio inputs	368.81
M-LYNX-15	15" 4:3 LCD monitor w/speakers, 1024x768, (2) composite, component, S-video, VGA, DVI and (2) audio inputs	413.65
M-LYNX-17	17" 5:4 LCD monitor w/speakers, 1280x1024, (2) composite, component, S-video, VGA, DVI and (2) audio inputs	447.28
M-LYNX-17SDI	17" 4:3 LCD monitor w/ SD-SDI BNC loop-thru	1265.61
M-LYNX-19	19" 5:4 LCD monitor w/speakers, 1280x1024, (2) composite, component, S-video, VGA, DVI inputs and (2) audio inputs	548.17
M-LYNX-19SDI	19" 5:4 LCD monitor w/ SD-SDI BNC loop-thru	1344.08



MARSHALL ELECTRONICS ORCHID® SERIES RACKMOUNT BROADCAST LCD MONITORS

This series of rackmount monitors not only integrates interchangeable components or DVI input modules, but is also packed with additional features such as re-clocked outputs, auto-sensing HDS/SDI inputs, real-time waveform monitors and color vectorscopes, tri-color tally indicators, adjustable color temperature, time code, precision gamma settings, adjustable clipping indicators, and more. All models are capable of de-embedding & displaying up to 16 channels of audio, any 2 channels of which can be monitored at one time. Each unit comes with at least one HDS/SDI input, one HDS/SDI output, and one input slot per screen, and stereo audio 3.5mm outputs

ITEM	DESCRIPTION	PRICE
OR-434	Four 4.3" monitors, 2RU, 5 assignable function keys & 1 joystick menu system, 800x480	CALL
OR-503	Three 5" monitors, 3RU, 6 assignable buttons/screen, 4 assignable rotary encoders, 5-button menu system, 800x480	CALL
OR-701A	Single 7" monitor, 3RU, dual HD/SD-SDI inputs, stereo speakers, 11 assignable function keys, 4 assignable rotary encoders, 5-button menu system, 800x480	2413.85
OR-702	Two 7" monitors, 3RU, 11 assignable function keys, 4 rotary encoders, 5-button menu system, 800x480	3310.85
OR-841-HDS/SDI	Single 8.4" portable field monitor, 4RU, 1024x768, 9 assignable buttons	2758.85
OR-901-XDI	9" monitor, rack/camera mountable, 4RU, HD-SDI/HDMI, 3D ready	3276.35
OR-YPH	Optional component input module	228.85
OR-DVI	Optional DVI-I input module	182.85

Panasonic

PANASONIC BROADCAST LCD MONITORS

Designed for critical broadcast and production applications as reference grade HD and SD monitors.



ITEM	DESCRIPTION	PRICE
BT-LH910GJ	9" HD/SD LCD 15:9 EVF monitor, 1280x768, HD/SD-SDI, HDMI, BNC, & D-Sub inputs, 3.7lbs	3000.24
BT-LH1760	17" LCD monitor (16:9), 1280x768, Vectorscope/WFM, DVI-D & (2) HD-SDI/SDI inputs, embedded audio, time code/CC capable, and desk stand, 13.7lbs	CALL
BT-LH2550PJ	25.5" HD widescreen monitor, 1920 x 1200, DVI-D & (2) HD-SDI inputs, composite, component, vectorscope, 18.1lbs	3257.28

Accessories

BT-MOUNT	Camera monitor mount for BT-LH910GJ	144.00
MO-LH910B	Porta-Brace flat screen monitor case for the BT-LH910G, black	207.45
BTMA1710G	Rackmount adapter for BT-LH1760, 2RU	232.80
BT-YUC1700	Thermodyne case for BT-LH1760	247.20
BT-YUC2550	Travel case for BT-LH2550	582.00

Call for more accessories.

Visit fullcompass.com today!

For expert advice - call: 800-356-5844

M-F: 9:00-5:30 Central



AUDIO



Panasonic

PANASONIC PROFESSIONAL PLASMA DISPLAYS & HOSPITALITY PLASMA DISPLAYS

	TH65PF30U	TH60PF30U	TH50PF30U	TH42PF30U	TH50PH30U	TH42PH30U
DISPLAY	1080p				HD Model	
SCREEN SIZE (DIAG.)	64.7 inch	60.1 inch	49.9 inch	41.6 inch	49.9 inch	41.6 inch
3D READY	Yes				No	
EFFECTIVE DISPLAY AREA (W x H)	56.5" x 32.8"	52.3 x 29.4"	43.5" x 24.5"	36.3" x 20.4"	43.6" x 24.5"	36.3" x 20.4"
RESOLUTION (H x V)	1920 x 1080 pixels				1024 x 768 pixels	1024x768 pixels
CONTRAST RATIO (BRIGHT AREA)	Max 5,000,000:1				Max 2,000,000:1	
PC SIGNAL COMPATIBILITY	VGA, SVGA, XGA, WXGA, SXGA, SXGA+, UXGA, WUXGA, (UXGA: compressed)				VGA, WVGA, SVGA, XGA, WXGA, SXGA, UXGA, WUXGA	
VIDEO SIGNAL COMPATIBILITY	525 (480)/60i, 60p; 625 (575)/50i, 50p; 625 (576)/50p; 750 (720)/60p, 50p, 1125 (1080)/60i, 50i, 24p, 24sF, 25p, 30p, 60p, 50p, 1250 (1080)/50i, 2048x1080/24p, 24sF				525 (480)/60i, 60p; 625 (575)/50i, 50p; 625 (576)/50p; 750 (720)/60p, 50p, 1125 (1080)/60i, 50i, 24p, 24sF, 25p, 30p, 60p, 50p, 1250 (1080)/50i	
INPUT/OUTPUT	Mini D-sub 15pin x 1, Plug & Play (VESA DDC 2B), M3 jack x 1					
PC/IN AUDIO	Mini D-sub 15pin x 1, DVI-D x 1, Plug & Play (VESA DDC 2B), M3 jack x 1					
SERIAL	D-sub 9pin x1, external control, RS232C compatible					
INTERCHANGEABLE TERMINALS						
SLOT 1	Vacant					
SLOT 2	Vacant					
BUILT-IN TERMINAL	Composite In w/ stereo audio, Component/RGB In (BNCx3) w/ stereo audio, HDMI, DVI-D w/audio					
SOUND/AUDIO OUT	20W (10W + 10W)		16W (8W + 8W)			



TH42PH30U



TH42PF30U



TH65PF30U



TYFB9RT



TYFB11DD



TY42TM6Y



TYFB11DHD



TYFB10HMD



TYFB10WPU



TYFB9BD



TYWK65PR20



TYST20K

PANASONIC PROFESSIONAL PLASMA MODELS UP TO 100,000-HOUR PANEL LIFE (SEE CHART ABOVE)

ITEM	DESCRIPTION	PRICE
<i>Professional Plasma Models – up to 100,000 hour panel life</i>		
TH65PF30U	65" HD plasma display, 1080p, blackCALL
TH60PF30U	60" HD plasma display, 1080p, black	2029.34
TH50PF30U	50" HD plasma display, 1080p, black	1395.31
TH42PF30U	42" HD plasma display, 1080p, black	1096.20
TH50PH30U	50" HD plasma display, black	860.71
TH42PH30U	42" HD plasma display, black	628.69
<i>Partial List of Accessories/Terminal Boards for Pro Series</i>		
TYFB10HMD	Dual HDMI terminal board (slot 1 or 2)	170.30
TY42TM6G	RGB active through terminal board (slot 1 or 2)	157.01
TYFB11DD	DVI-D terminal board (slot 1 or 2)	157.01
TYFB9RT	IR through terminal board (any slot)	138.90
TY42TM6P	PC input terminal board (any slot)	107.49
TYFB9BD	BNC dual video terminal board (slot 1 or 2)	163.05

Continued in next column...

Continued from previous column...

ITEM	DESCRIPTION	PRICE
TY42TM6B	BNC composite video terminal board (slot 1 or 2)	144.94
TY42TM6Y	Composite/component video terminal board (slots 1&2, or slots 2&3)	251.22
TY42TM6Z	RCA component video terminal board (any slot)	107.49
TY42TM6V	RCA composite video terminal board (slot 1 or 2)	144.94
TYFB11DHD	Dual Link HD-SDI board (slot 1 or 2)	2631.80
TYFB10HD	HD-SDI terminal board w/audio (slot 1 or 2)	1632.95
TYFB9HD	HD-SDI terminal board (slot 1 or 2)	1316.50
TYFB10WPU	Wireless presentation board (slots 1&2, or slots 2&3), c(IEEE802.11b/11g)	339.39
<i>Miscellaneous Accessories</i>		
TYAR65P9W	Anti-glare filter for TH65PF30U	845.46
TYTP65P10S	Touch Panel for TH65PF30UCALL
TYTP42P10S	Touch Panel for TH42PH30U	2397.88
TYST20K	Pedestal stand for TH50PF30U/TH42PF30U/TH50PH30U/TH42PH30U	163.05
TYWK65PR20	Wall hanging bracket, angled	376.83



COMPUTER AV



ACCESSORIES



Follow us!

Download your FREE Parts Catalog today! Visit fullcompass.com/parts

Panasonic
ideas for life

DELIVERING INNOVATIVE TECHNOLOGY TO MEET YOUR NEEDS.

**PANASONIC SOLUTIONS COMPANY, THE NUMBER-ONE
CHOICE WHEN SUCCESS IS THE ONLY OPTION.**

At Panasonic, we recognize that you have an important job to do. Our products and services, including flat-panel displays, projectors and professional video, are all engineered for longevity and will enable you to accomplish your goals, day in and day out. Our dedicated sales team will help determine the right technology solution for any application. And, with our world-class service and support, you know you can count on a company that stands behind its products, as well as its customers.



800-356-5844
FULLCOMPASS.COM



LF Series Full HD LCD

D12000 Series

P2 HD Lineup

Panasonic Solutions Company

©2010 Panasonic Corporation of North America. All rights reserved.

SONY

SONY BRAVIA® LED INTERNET TELEVISIONS These slim LED TV's feature Full HD 1080p for picture detail and Edge LED backlighting for better contrast. Enjoy wireless access to Sony Entertainment Network, YouTube and more with the included Wi-Fi adaptor. Digital Noise Reduction enhances detail while MotionFlow™ XR 240 technology will smooth out fast camera motion. Audio power output is 8W+8W (10W+10W on KDL55EX640). This series includes analog audio (2 in/1 out), (1) component and (2) composite inputs, digital audio out, (4) HDMI, PC in, USB and Ethernet.



ITEM	DESCRIPTION	PRICE
KDL40EX640	40" 1080p LED HDTV w/ MotionFlow	899.99
KDL46EX640	46" 1080p LED HDTV w/ MotionFlow	1199.99
KDL55EX640	55" 1080p LED HDTV w/ MotionFlow	1799.99

SONY PROFESSIONAL LCD COLOR MONITORS

An extensive line-up of SD and SD/HD professional LCD monitors from 15" to 42" featuring fast video response, extremely high brightness, contrast, color depth and wide viewing angle.



A one-piece construction that includes integrated stand. The LMD4251TD add 3D capability, 3D glasses required. All models are ideal for HDV production applications with some models supporting HDMI or DVI.

ITEM	DESCRIPTION	PRICE
LMD1510W	15.6", 1366x768, HDMI, Composite, Component, Y/C, SDI	752.75
LMD1530W	15", 1280x768, HDMI, SDI, Composite, Y/C and RGB	1078.77
LMD1541W	15", 1280x768, HDMI, SDI, Composite	2123.43
LMD1751W	17", 1280x768, DVI-D, SDI	2259.96
LMD2110W	21.5", 1920x1080, HDMI, SDI, Composite, Y/C and RGB	951.06
LMD2451W	24", 1920x1200, DVI inputs, Composite, Y/C and RGB	CALL
LMD2451WHD	LMD2451W packaged with BKM243HS HD/SD SDI adapter	CALL
LMD4251TD	42", 1920x1200, 3D, DVI inputs, Composite BNC	CALL

Accessories

MB533	Rackmount kit for LMD1530W	225.50
MB534	Rackmount kit for LMD1541W	188.51
BKM243HS	HDS/1.4-2.2 SDI input adapter, for LMD2051W, LMD2451W	1030.38
TD6BR250/B	3D glasses	69.99

SONY PVM SERIES OLED PROFESSIONAL VIDEO MONITOR

The PVM series uses a 960x540 OLED (Organic Light Emitting Diode) panel, which creates true blacks and higher contrast than LCDs. Picture quality is excellent both indoors and outdoors. Supports broadcast standards SMPTE-C, EBU, and ITU-R BT.709, with resolutions from NTSC/PAL to 1080p60. The PVM 740 comes standard with one composite, one auto detecting SDI/HDS/SDI/3G input, one HDMI input, internal waveform monitor, 1/4" and 3/8" holes for camera mounting, and AC power adapter.



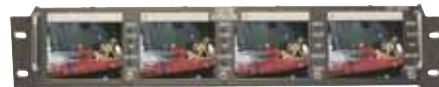
ITEM	DESCRIPTION	PRICE
PVM740	7 1/4" OLED professional monitor	2243.21
PVM11741	17" OLED monitor, (2) 3G/HD/HD-SDI, HDMI & composite inputs	CALL
PVM2541	25" OLED monitor, (2) 3G/HD/HD-SDI, HDMI, & composite inputs	CALL
VF510	ENG field kit for PVM740L	385.14
MB531	Rackmount kit	288.86

SONY FWD SERIES HD LCDS These public display HD LCD's have slim bezels for a more refined and stylish look for signage. Incorporating high-quality, professional 47" and 42" (diagonal) LCD panels, they offer full HD (1920x1080) resolution and high brightness for use in bright light conditions. They support audio in/out (pinjack), DVI-D, composite video out, Ethernet, HD component I/O, S-Video, and video-in interfaces. Also

equipped with a network port for remote control/monitoring. An option slot accepts a range of adapters for versatility. Well suited for retail shops, shopping malls, hospitals or schools. The FWDS42E1 is a low power consumption (100W) model and has DVI-D input and remote control, with HDMI & SDI as options.

ITEM	DESCRIPTION	PRICE
FWDS42H1	42", slim HD LCD	1405.35
FWDS47H1	47", slim HD LCD	1807.08
FWDS42E1	42" slim HD LCD, low power consumption model	1272.12
BKMF15	HDMI input adapter	113.19
BKMF16	SDI/SDI input adapter	879.89

TOTE VISION



TOTE VISION LCD MONITORS

ITEM	DESCRIPTION	PRICE
------	-------------	-------

4" to 5.6" Monitors

All include LED backlight for better color saturation and longer life.

LCD400X4	Four 4" LCD units in 19" rackmount kit, tilts 90°, NTSC/PAL, 2RU	1211.00
LCD410	4" field monitor with audio, battery pack, NTSC	257.00
LCD411	As LCD410, adds BNC in/out	257.00
LCD501	5" field monitor with stereo audio headphone jack, NTSC/PAL	310.00
RM501	EIA standard 19" rackmount kit for 3 units LCD-501, 3RU	116.00
LCD560X3	Three 5.6" LCD units in rackmount kit, tilts 90°, NTSC/PAL, 3RU	1306.00
LCD562	5.6" field monitor with audio, battery pack, NTSC/PAL	380.00
LCD565	As LCD562, adds BNC	380.00

7" - 8" Monitors

LCD703HD	HD 7", 16:9, DVI, component in/out, S-Video in/out, BNCin/out, 1080p	754.00
LCD703HD-KIT	LCD-703HD with rechargeable battery pack, tote bag, and AC	968.00
LCD703HD1	1 LCD-703HD in rackmount kit, 3RU	888.00
LCD703HD2	2 LCD-703HD in rackmount kit, 3RU	1508.00
LCD703HDA	LCD-703HD with Anton Bauer QRC-Gold mount	741.00
LCD703HDV	LCD-703HD with "V" lock mount for IDX batteries	714.00
LCD842HD	HD 8.4", 4:3 with 16:10 capability, composirt, component, S-Video, VGA, HDMI	942.00
LCD842HD2	Two 8" LCD in rackmount kit, no audio, 4RU	1992.00

10.4" MONITORS

LCD1048HD	10.4", S-Video, component, RGB, RS232 (no TV), 1024x768, 1080p	870.00
LCD1048HDM	LCD-1048HD in rackmount kit, 4RU, displays 1080p	897.00

15.4" MONITORS

LCD1560HD	15.4", 16:9, audio, composite, component, S-Video analog RGB, HDMI, RS232, supports 1080p/i, 720p & 480p/i	795.00
LCD1560HDR	LCD-1560HD in rackmount kit, 6RU	795.00

19" MONITORS

LCD1901HD	19" in metal case, 16:9, audio, S-Video, component, NTSC/PAL, RGB, RS232, 1080p	975.00
LCD1901HDR	LCD-1901HD in rackmount kit, 7RU	975.00

TV ONE TV ONE PROFESSIONAL RACK MOUNT LCD MONITORS

The LCD monitors are available in a wide variety of screen sizes and input configurations to satisfy most applications. All LCD panels used are top grade, professional products. High brightness and contrast ratios are standard features, along with wide viewing angles. All models are 4:3 aspect ratio.



ITEM	DESCRIPTION	PRICE
LM401M	Single 4.0", dual-composite inputs, metal case	293.25
LM404R	Quad 4", composite and S-video inputs, tilt rackmount	1440.75
LM563R	Triple 5.6", composite and S-video inputs, tilt rackmount	1695.75
LM701M	Single 7" w/ dual composite inputs, metal case, Vesa	505.75
LM1042R	Dual 10.4", composite and PC SVGA, optional expansion to SXGA & all HDTV rackmount	2290.75
LM1511R	Single 15" composite, S-video, PC, stereo, XGA tilt rackmount, VESA mount	1270.75
LM1911R	Single 19" composite, S-video, PC, stereo, SXGA tilt rackmount, VESA mount	1610.75
LM1920R	Single 19", composite, S-video, PC, stereo, VESA mount	930.75

vaddio

REDEFINING CAMERA CONTROL

VADDIO PREVIEW RACK MOUNT MONITORS

Excellent rack mount monitors for a variety of applications that require high resolution monitoring of HD/SD cameras. Color, contrast, brightness, and On/Off controls per LCD (except PREVIEW-QUAD-4). The HD monitors offer 16:9 LCD screens, VGA input, and tally indicators. Other features include Component, S-Video and composite inputs, with loop-thru outputs. The SD monitors offer active matrix LCD screens and inputs with active looping outputs on BNC connectors.



ITEM	DESCRIPTION	PRICE
PREVIEW-DUAL-6.4	Dual 6.4" LCD rack mount monitor, 3RU	1148.40
PREVIEW-TRIPLE-5.6	Triple 5.6" LCD rack mount monitor, 3RU	1071.60
PREVIEW-QUAD-4	Quad 4" LCD rack mount monitor, 2RU	994.80
PREVIEWHD-DUAL-7	Dual 7" LCD rack mount monitor, 3RU	2034.00
PREVIEWHD-TRIPLE-5	Triple 5" LCD rack mount monitor, 3RU	2274.00

VariZoom

VARIZOOM VZ-TFT7 16:9 7" ON-CAMERA MONITOR

An external video display allowing more free movement away from camera with a generous 30°/60° viewing angle. Can use for most aspect ratios and has RCA video and 2.1mm 12V DC input. 10W max power consumption. Includes AC adapter and 4' RCA cable.



ITEM	DESCRIPTION	PRICE
VZ-TFT-7	7" 16:9 on-camera monitor w/video cable and universal power supply	332.45
VZ-TFT-7U	7" 16:9 on-camera monitor w/case, 702M battery kit, shoe and sunhood	465.45

- AUDIO
- COMPUTER AV
- MUSIC
- VIDEO
- LIGHTS
- ACCESSORIES



Follow us!

Commercial Lease-To-Own financing for businesses available!
Contact your Sales Pro for details.