

MKC Series & MKD526 Bracket Instructions

Original Instructions

These instructions are for defining acceptable MKC series or MKD526 bracket installations to a mounting surface and for installing an MKC, MKC-WP, MKD526 or MKD526-WP loudspeaker to a designated bracket.

IMPORTANT SAFETY INSTRUCTIONS – READ THIS FIRST

Safety Instructions

Read and heed all warnings and safety instructions in this manual before using this product. Failure to follow these precautions may result in damage, injury, or death.

- 1) Read these instructions.
- 2) Keep these instructions.
- 3) Heed all warnings.
- 4) Follow all instructions.
- 5) Clean only with a dry cloth.
- 6) Install loudspeaker in accordance with the manufacturer's instructions.
- 7) Do not install near any heat sources such as radiators, heat registers, stoves, or other apparatus that produce heat.
- 8) Only use attachments/accessories specified by the manufacturer.
- 9) Refer all servicing to qualified service personnel. Servicing is required when the apparatus has been damaged in any way, does not operate normally, or has been dropped.
- 10) Use personal protective equipment not limited to gloves, safety goggles, ear protection, and lifting supports.

Suspension Warnings

WARNING: Suspending anything, especially overhead of people, should be done with extreme caution. Always engage the services of a certified professional who is qualified to determine the requirements for and to implement overhead rigging. Only persons with the knowledge of proper hardware and safe rigging techniques should attempt to suspend loudspeakers overhead. Failure to follow these precautions may result in damage, injury, or death.

MKC Series & MKD526 Bracket Instructions

Avertissements de suspension

AVERTISSEMENT: Suspendre quoi que ce soit, en particulier les frais généraux de personnes, doit être fait avec une extrême prudence. Toujours engager les services d'un professionnel certifié qui est qualifié pour déterminer les conditions requises et à mettre en œuvre le gréement en tête. Seules les personnes ayant la connaissance du matériel approprié et les techniques sécuritaires de gréage devraient tenter de suspendre les haut-parleurs audessus. Le non-respect de ces précautions peut entraîner des dommages, des blessures ou la mort.

Avvertenze sospensione

AVVERTENZA: Sospendere nulla, soprattutto sovraccarico di persone, deve essere fatto con estrema cautela. Inserire sempre i servizi di un professionista certificato che si è qualificato per determinare i requisiti di e ad attuare manovre in testa. Solo le persone con la conoscenza di tecniche di assemblaggio di sicurezza hardware e dovrebbero tentare di sospendere gli altoparlanti in testa. La mancata osservanza di queste precauzioni può provocare danni, lesioni o morte.

Advertencias de suspension

ADVERTENCIA: La suspensión de cualquier cosa, especialmente por encima de las personas, se debe hacer con mucho cuidado. Siempre contratar los servicios de un profesional certificado que está calificado para determinar los requisitos para implementar y para las maniobras de elevación. Sólo las personas con el conocimiento de las técnicas de aparejo de seguridad de hardware adecuada y deben intentar suspender altavoces por encima. El incumplimiento de estas precauciones puede resultar en daños, lesiones o muerte.

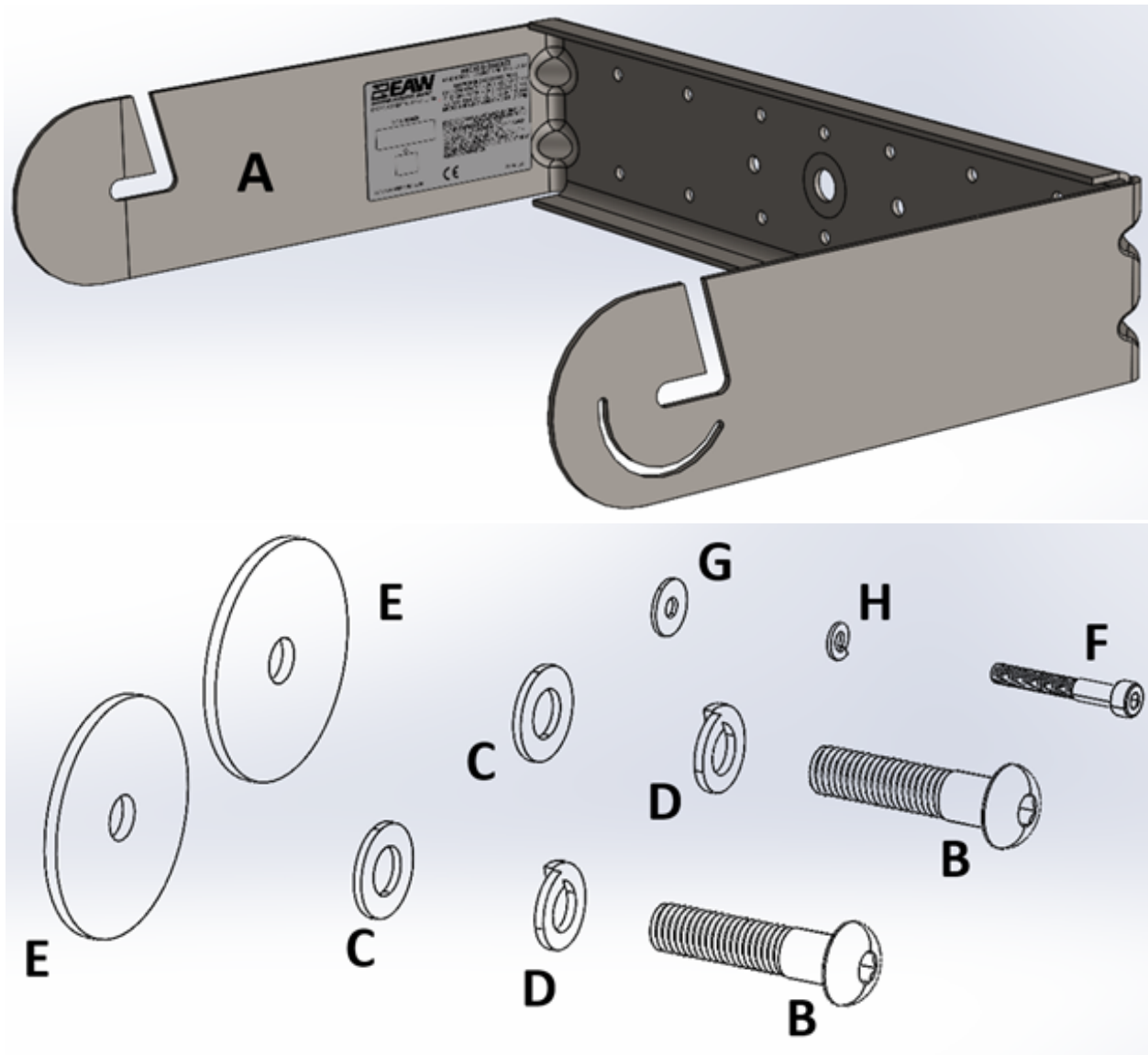
Suspension Warnungen

WARNUNG: Schwebend alles, vor allem Aufwand von Menschen, sollte mit äußerster Vorsicht erfolgen. Immer engagieren, die Dienste eines zertifizierten Profi, der qualifiziert ist, die Anforderungen zu bestimmen und Überkopfmontage zu implementieren. Nur Personen mit der Kenntnis der richtigen Hardware und sichere Rigging Techniken sollten Lautsprecher Kopf auszusetzen versuchen. Die Nichtbeachtung dieser Vorsichtsmaßnahmen kann zu Schäden, Verletzungen oder zum Tod führen.

MKC Series & MKD526 Bracket Instructions

1. Inventory your kit

Item	Description	Quantity
A	Bracket	1
B	Button Head Screw	2
C	Flat Washer	2
D	Split-lock Washer	2
E	Rubber Washer	2
F	Socket Head Screw	1
G	Flat Washer	1
H	Split-lock Washer	1



****Refer to Appendix at the end of document for overview of all bracketry across the series****

MKC Series & MKD526 Bracket Instructions

2. Bracket limits of use

a. The Brackets are designed to suspend each corresponding MKC Series & MKD526 loudspeaker with a design factor designated on its appropriate bracket label or exceed most global suspension regulations. Maximum working load limits of each bracket can be located on its appropriately applied label. These values have been confirmed with Finite Element Analysis and destructive testing.

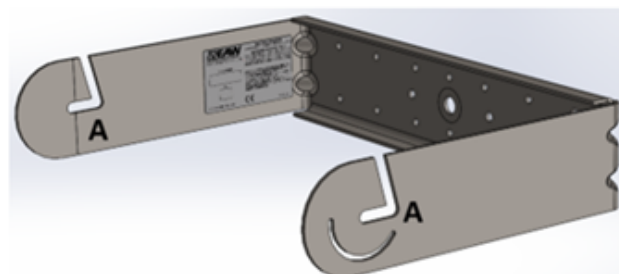


Figure 1 - Horizontal Configuration

b. The weight/mass of each bracket is also listed on its appropriately applied label.

c. Each bracket are designed to suspend only one loudspeaker per bracket.

d. Any geometric or structural modifications to the bracket or hardware that is not EAW-approved will void the warranty and may result in damage, injury, or death.

e. WARNING: Take care when lifting MKC Series or MKD526 products to avoid harm or damage to product.

f. WARNING: MKC & MKD526 brackets are for suspension of loudspeakers only. Suspension of persons is prohibited.



Figure 2 - Vertical Orientation.
May also be flipped 180° from
above image (Not applicable
with MKD526 Bracketry)

3. Installation of the brackets to a mounting surface

a. Test fit a bracket on an MKC Series or MKD526 loudspeaker to confirm the correct angle, loudspeaker and bracket orientation before installing the bracket to the mounting surface.

b. Configurations - Depending on mounting option used, the MKC Series U-Brackets may be installed horizontal (back and arms are level/parallel to the ground - figure 1) or vertical (back and arms are plumb/perpendicular to the ground - figure 2). MKD526 U-Brackets may only be used in a horizontal orientation. If a vertical deployment is needed, the Yoke bracket may be used.

MKC Series & MKD526 Bracket Instructions

NOTE: the outermost mounting point "A" is designed as an open slot to allow for easy locating of an MKC Series or MKD526 Loudspeaker and loosely pre-installed hardware. If using the slotted mounting point, the bracket must be installed oriented with the slot angled upward as visually shown in Figure 1, opposing the ground.

c. Level - The back flange of the brackets must be level when installed to the mounting surface for either figure 1 or 2 orientation and before installing an MKC Series or MKD526 loudspeaker to the bracket. Any geometric or structural modifications to the brackets or hardware that are not EAW-approved will void the warranty and may result in damage, injury, or death.

d. Mounting options

NOTE: It is recommended that you consult a building professional for the proper mounting hardware before mounting the bracket. Due to various construction methods and materials, the hardware for securing the bracket to the mounting surface is not supplied. It is required that the use of hardware locking methods, not limited to lock washers, thread-locker, or nylon-retention feature, be applied when securing the bracket to the mounting surface or

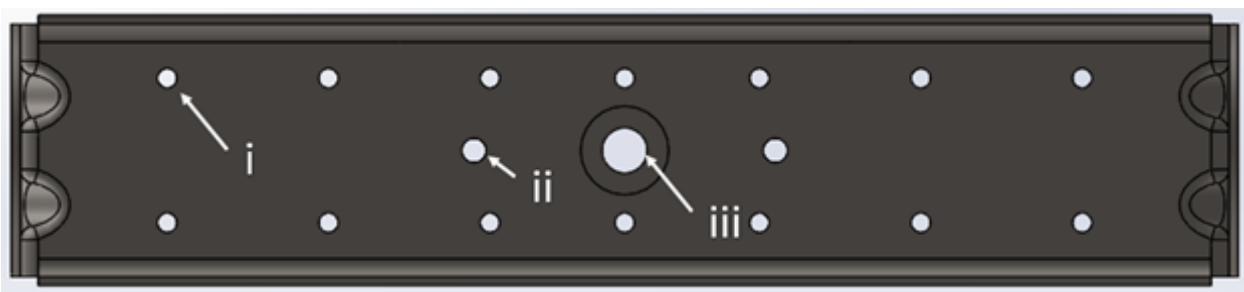


Figure 3 - Each bracket has multiple mounting hole options as shown above

One Ø5/8in (Ø15.9mm) hole (iii)

1. This hole can be used as a ceiling pole mount or a wall wire pass through.
2. If installing any bracket by this hole, a secondary safety point is suggested to be secured.

Two inner Ø5/16in (Ø8.5mm) holes (ii)

1. These inner holes are spaced apart from each other on center and aligned.
2. These two inner holes may be used to install the bracket to a mounting surface using load bearing hardware; both holes must be secured.

4. Installation of an MKC Series or MKD526 loudspeaker to a bracket.

a. Choosing a loudspeaker configuration

- Each bracket has an angle lock option.
- The mounting point is always connected using the M10 screw location on the top and bottom of the loudspeaker (exception being MKD526 Yoke Bracket)

MKC Series & MKD526 Bracket Instructions

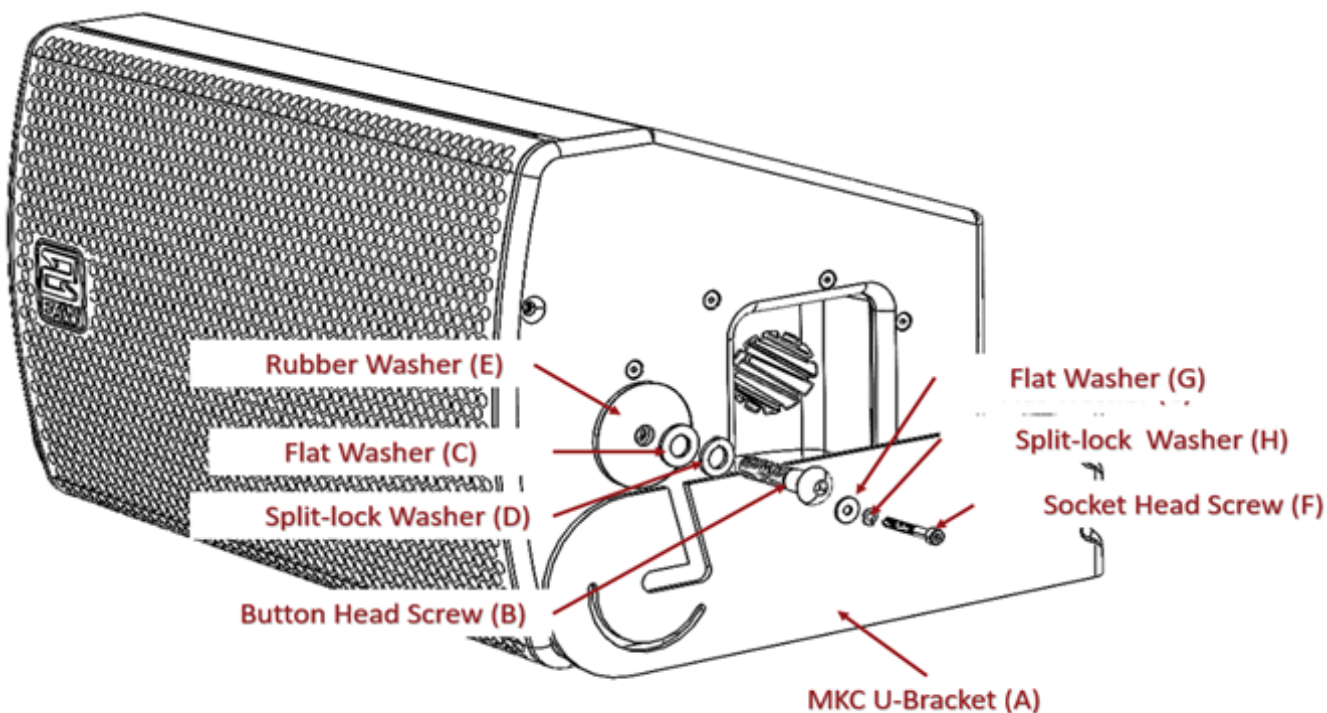


Figure 4 - Locking washer is first on bolt, then flat washer, rubber washer to be inside of bracket flanges

- The outermost mounting point "A" is designed as an open slot to allow for easy locating of the loudspeaker and loosely pre-installed hardware when using the slotted mounting point, the bracket must be installed oriented with the slot angled upward, opposing the ground.
- Use of the angle lock point is optional. The angle lock point is used for locking the loudspeaker at a specific set angle.

b. Installing a loudspeaker onto a mounted bracket.

WARNING: Take care when handling and wear PPE gloves to protect from crushing and impacts with digits, limbs, and/or product.

Note, for weather protected applications (using WP Series Loudspeakers), apply user-supplied, waterproof, non-hardening, non-locking thread sealant to the threads of two button head screws (B) & the single socket head screw (F) per the thread sealant's instructions. Failure to do so could result in water ingress and damage to the loudspeaker.

- Onto each of two button head screws (B), place a split-lock washer (C) and a flat washer (D).
- Onto each of the socket head screw (F), place a split-lock washer (H) and a flat washer (G).

MKC Series & MKD526 Bracket Instructions

WARNING HEAVY LIFTING, MULTIPLE PERSON LIFT – Lift the loudspeaker to align the center threaded mounting hole with the brackets preferred mounting point.

- Using an Allen wrench, loosely thread the screws and washers (B, C & D) through the bracket mounting point, through the selected rubber washer (E) and into the loudspeaker's center threaded mounting hole. Repeat for the opposite side.
- Do to the bracket's slotted mounting point "A", the hardware may be preassembled to the loudspeaker.
 - *Note: If using the slotted mounting point, the bracket must be installed oriented with the slot angled upward, opposing the ground.*
 - Onto each of two button head screws (B), place a split-lock washer (C), a flat washer (D) and the selected rubber washer (E). Thread these screws and related hardware three complete turns into the loudspeaker's two threaded mounting holes.
 - Leave as large a space as possible between the rubber washer (E) and the flat washer (D).
 - **WARNING HEAVY LIFTING, MULTIPLE PERSON LIFT – Lift the loudspeaker into the bracket slots with the large rubber washers (E) inside the bracket and the flat and lock washers (C & D) outside the bracket.**
- Position the loudspeaker to the desired angle.
- In securing the angle using the angle locking point, align the loudspeaker to desired angle.
 - Onto a socket head screw (F), place a lock washer (H) and a flat washer (G).
 - Using an Allen wrench, loosely thread the screw and washers (F, G, & H) through the bracket angle lock point and into the loudspeaker's center threaded mounting hole.
- Using allen wrenches, tighten all screws (B & F).

5. Review the MKC Series or MKD526 Loudspeaker installation

- a. Confirm the loudspeaker is level or plumb depending on the configuration.
- b. Confirm the aim angle is as expected.
- c. Confirm all hardware is tight.
- d. For weather protected applications, confirm all sealants were applied properly.

MKC Series & MKD526 Bracket Instructions

6. Maintenance of an MKC Series or MKD526 U-Bracket installation

- a. **WARNING:** Not following Maintenance instructions could result in equipment damage, serious injury or death.
- b. Maintenance should only be performed by an experienced technician.
- c. As with any professional loudspeaker system, routine maintenance must be conducted in order to ensure the longevity and safe, consistent performance.
- d. Inspect the bracket for corrosion and other damage. Brackets with visible damage should be replaced and discarded.
- e. Inspect hardware securing the bracket to the mounting surface for corrosion or looseness. Tighten loose hardware and consider installing hardware locking methods. Replace and discard corroded hardware.
- f. Inspect hardware mounting the loudspeaker to the bracket for corrosion or looseness. Tighten loose hardware. Replace and discard corroded hardware.
- g. For weather protected applications (using WP Series Loudspeakers), inspect hardware sealants for cracking or gaps in sealant. Replace damaged sealant with user-supplied, waterproof, non-hardening, non-locking sealant per the sealant's instructions. Failure to do so could result in water ingress and damage to the loudspeaker.
- h. Clean brackets and loudspeakers with a dry cloth.

7. Dismantling the MKC Series or MKD526 bracket installation

- a. ***WARNING HEAVY LIFTING – Fully support the weight of the loudspeaker. Using a allen wrench, remove the screws at the mounting and angle lock points. Carefully lower the loudspeaker to the ground.***
- b. Support the weight of the bracket. Remove the mounting hardware securing the bracket to the mounting surface. Carefully lower the bracket to the ground.
- c. Discard all damaged components.

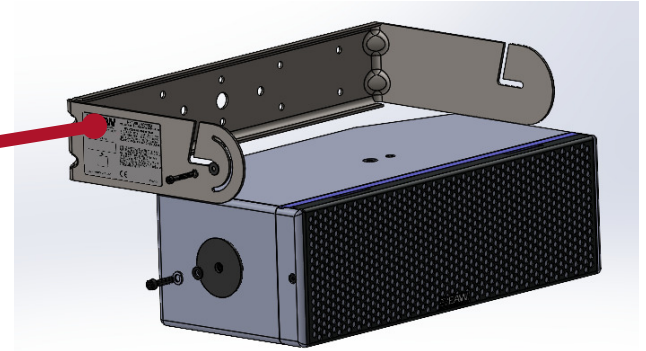
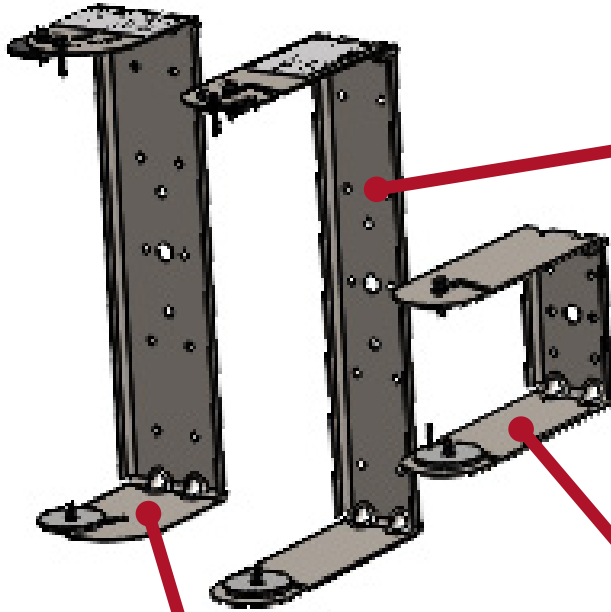
EU Declaration of Conformity

EAW North America Inc hereby declares that this device is in compliance with Directive 2006/42/EC

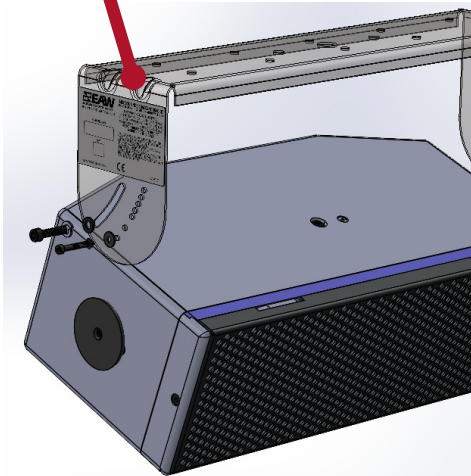
A copy of this EU Declaration of Conformity is available at <https://eaw.com/downloads/#142-660-wpfd-certifications>

MKC Series & MKD526 Bracket Instructions

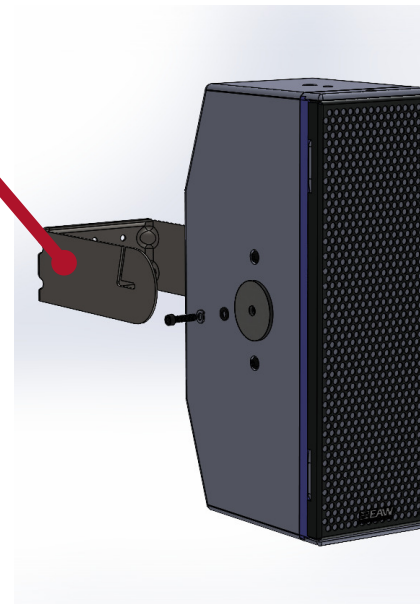
APPENDIX A - MKD526 Bracketry



U-Bracket



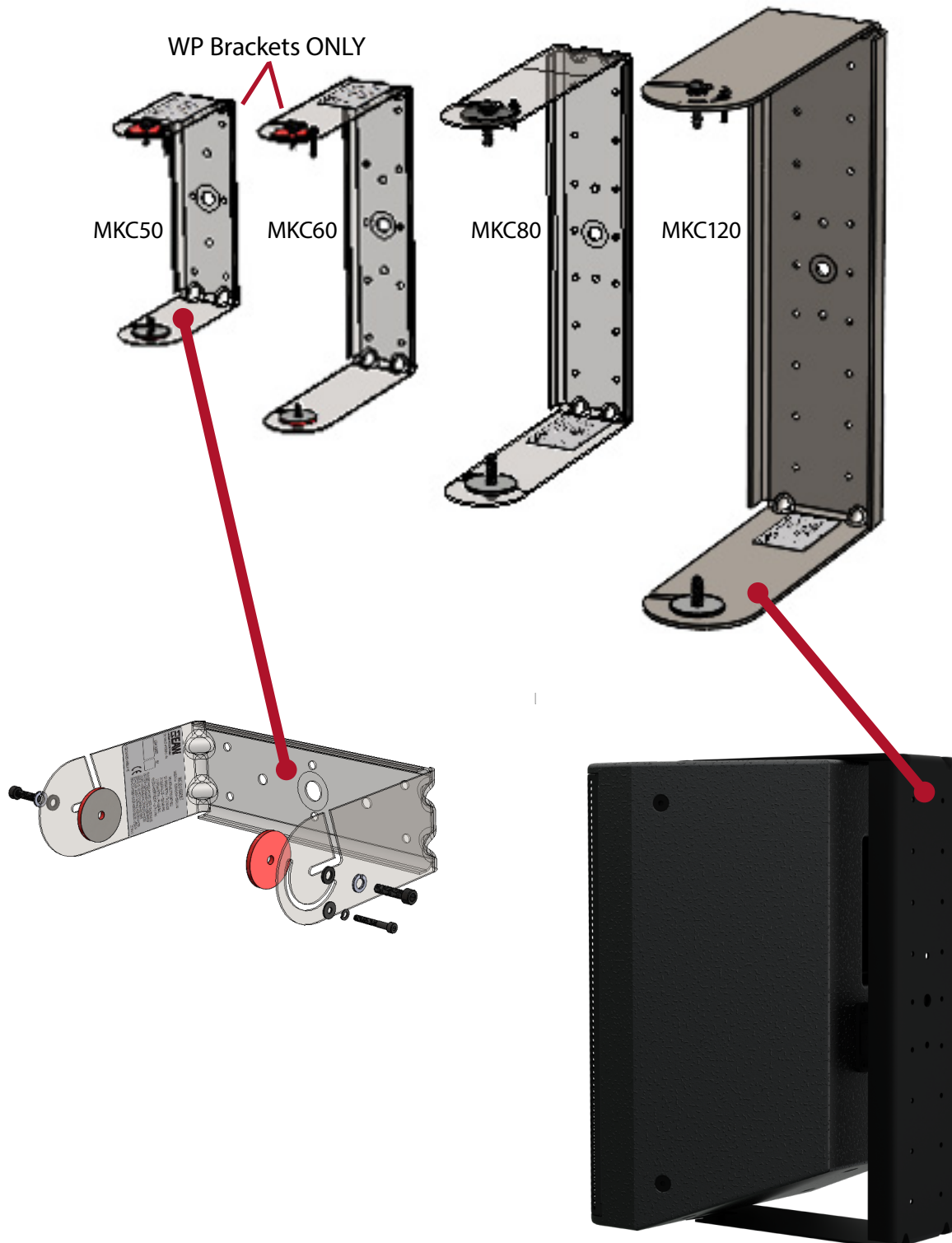
Under Balcony Bracket (WP not available)



Yoke Bracket

MKC Series & MKD526 Bracket Instructions

APPENDIX B - MKC Series Bracketry



MKC Series & MKD526 Bracket Instructions

Contacting EAW

We have attempted to make this manual and the instructions as thorough as possible. However, feel free to contact us with any further questions or comments for topics not covered.

Operating Questions
EAW Support & Service
Tel 508-234-6158
Tel 800-992-5013 (USA only)
E-mail Support@eaw.com

Thank you for purchasing EAW products

EAW
One Main Street
Whitinsville, MA 01588
USA