

# Technical Manual

# JBL VRX932LAP/230



## SPECIFICATIONS

### ACOUSTIC & ELECTRICAL SPECIFICATIONS:

- DPC-2 Internal Amplification Output (at normal load): 1750 Watts Peak, 875 Watts Continuous
- Frequency Response: 75 Hz - 20 kHz ( $\pm 3$  dB)
- Frequency Range: 57 Hz - 20 kHz ( $-10$  dB)
- Maximum Peak Output: 136 dB SPL at 1m
- Signal Processing: DSP based, resident in Input Module
- AC Power Operating Range: 90-132 VAC or 216-264 VAC, 50/60Hz
- AC Input Connector: Neutrik PowerCon (NAC 3MPA)
- AC Loop Through Connector: Neutrik PowerCon (NAC 3MPB)
- Audio Input Connector: XLR with loop through
- AC Current Requirements: 6A per system at 120V, 3A per system at 240V
- AC Line Voltage: User selectable: 120V/240V (-15%, +10%)
- System Management: DSP based limiters for mechanical and thermal protection
- User Controls: Input Attenuator (0-16 dB), ACS Array Configuration Selector, HF level adjustment (+3 dB, 0 dB, -3 dB)
- DPC-2 Output as (Continuous impedance): IEC shaped pink noise into rated load LF: 750 Watts, HF: 125 Watts
- DPC-2 Output section: LF: Dual-Bridged Technology™, Class D HF: Bridged Class D

- Cabinet: Enclosure (Not For Sale)
- Grille: 352282-001
- Low Frequency Transducer: 2262FF, 305 mm (12 in) dual voice coil Differential Drive® woofer with neodymium-magnet
- Bandpass Nominal Impedance: 2 x 2 ohms
- DC Resistance: 5.1 ohms  $\pm 10\%$
- High Frequency Transducer: (3) 2408J, 38 mm (1.5 in) voice coil, neodymium compression driver
- Bandpass Nominal Impedance: 4 ohms
- DC Resistance: 8.9 ohms  $\pm 0.2\%$

### AURAL SWEEP TEST SPECIFICATIONS:

- A. System Aural Sweep Test: 0.8V (Gain fully CCW)
- B. L.F. Aural Sweep Test: 7V Input, 10 Hz to 1 kHz
- C. H.F. Aural Sweep Test: 1.0V Input, 200 Hz to 1.5 kHz

### PHYSICAL SPECIFICATIONS:

- Enclosure Dimensions: 349 x 597 x 444 mm D (13.75 x 23.5 x 17.5 in. D)
- Net Weight: 52 lb (24 kg.)

### WARRANTY INFORMATION:

- Refer to Warranty Statement packed with each product.

### SYSTEM COMPONENTS:

## PACKAGE

Warranty 59660

Power Cord Assembly Pack / Edison, Shucko 355040-002

Contents:  
355146-001 (120V) (1) Power Cord

355147-001 (230V) (1) Power Cord

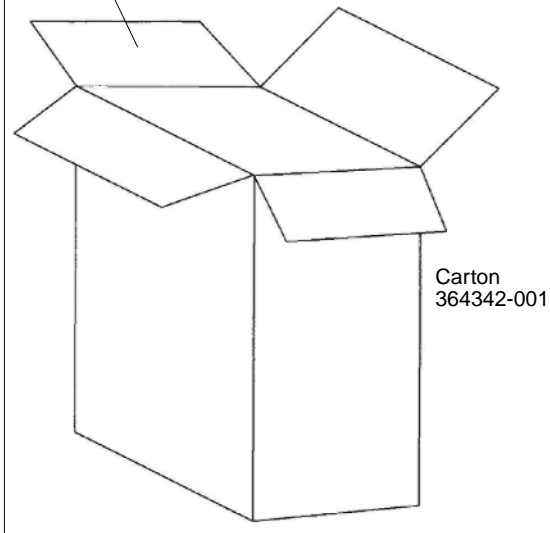
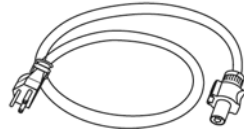
NAC3FCB (1)  
Neutrik  
Gray PowerCon

Manual  
364536-001

Pad, Filler (2)  
364343-001

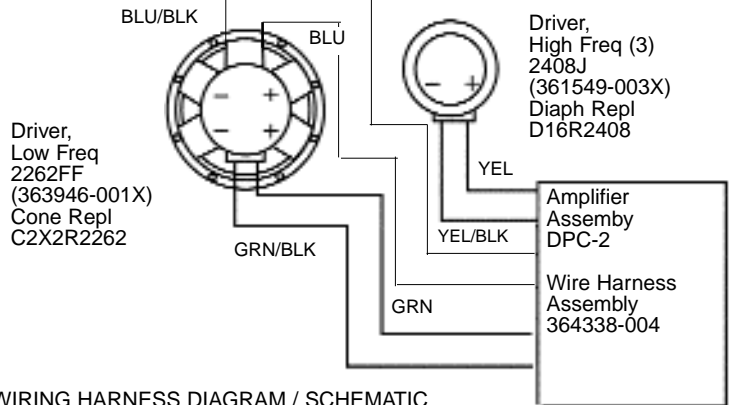
Filler, Grille  
364344-001

Pkg, Microfoam  
49790P

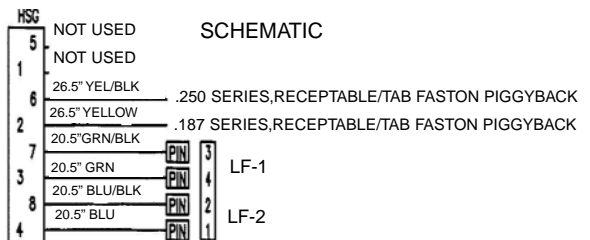
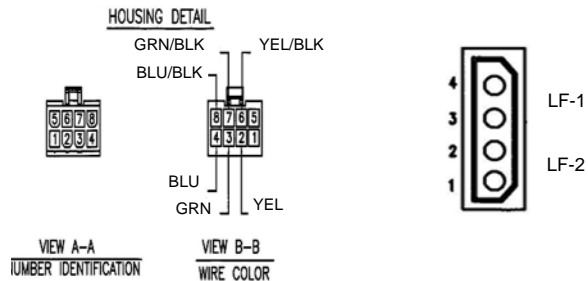


Carton  
364342-001

## WIRING DIAGRAM



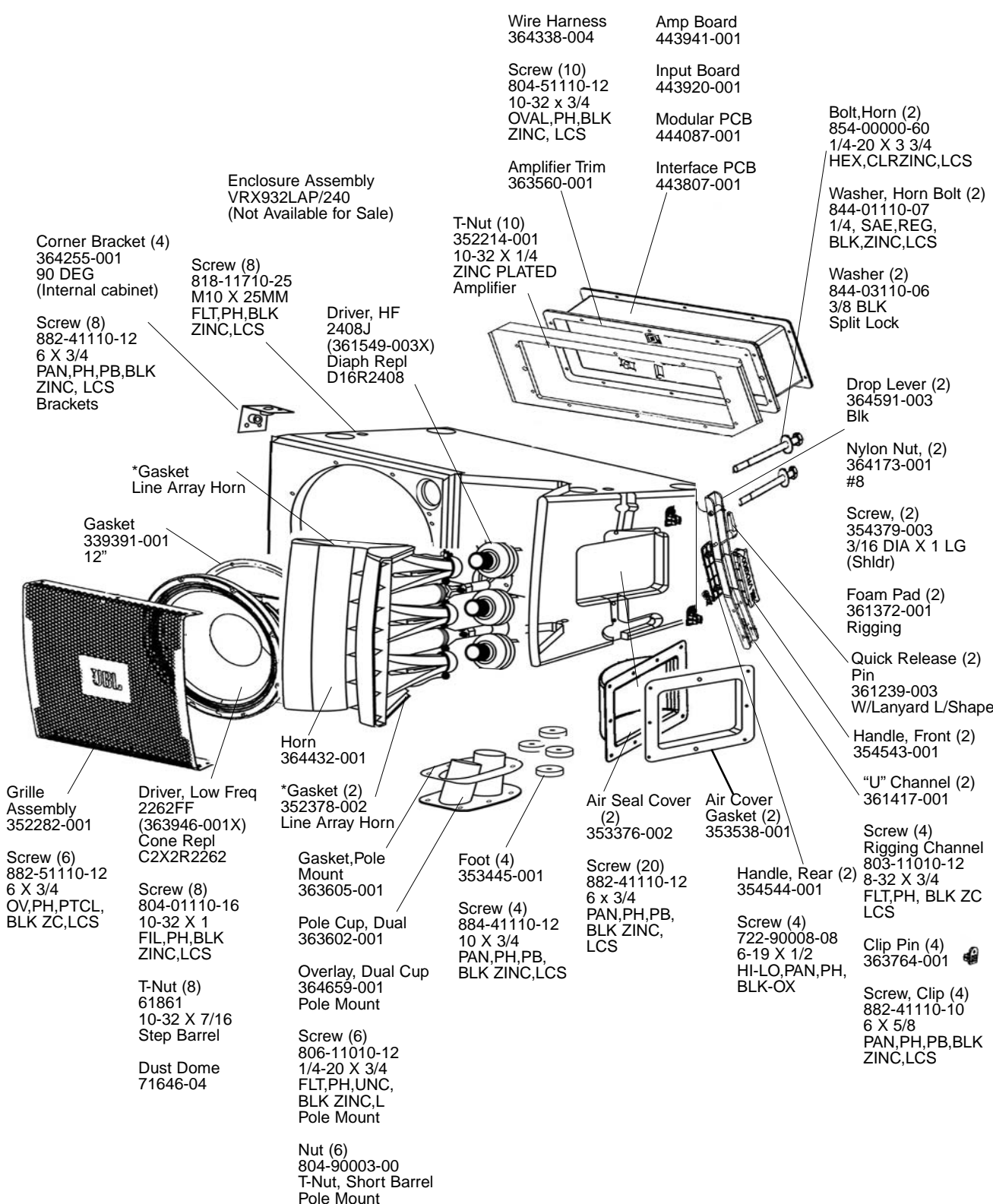
WIRING HARNESS DIAGRAM / SCHEMATIC  
364338-004



JBL VRX932LAP/230 REV M

# JBL VRX932LAP/230

## COMPONENT EXPLODED VIEW



- Wire Harness 364338-004
- Amp Board 443941-001
- Screw (10) 804-51110-12 10-32 x 3/4 OVAL,PH,BLK ZINC, LCS
- Input Board 443920-001
- Amplifier Trim 363560-001
- Modular PCB 444087-001
- Interface PCB 443807-001

- Bolt, Horn (2) 854-00000-60 1/4-20 X 3 3/4 HEX,CLRZINC,LCS
- Washer, Horn Bolt (2) 844-01110-07 1/4, SAE,REG, BLK,ZINC,LCS
- Washer (2) 844-03110-06 3/8 BLK Split Lock

- Corner Bracket (4) 364255-001 90 DEG (Internal cabinet)
- Screw (8) 818-11710-25 M10 X 25MM FLT,PH,BLK ZINC,LCS
- Screw (8) 882-41110-12 6 X 3/4 PAN,PH,PB,BLK ZINC, LCS Brackets

- T-Nut (10) 352214-001 10-32 X 1/4 ZINC PLATED Amplifier

- Drop Lever (2) 364591-003 Blk
- Nylon Nut, (2) 364173-001 #8

- \*Gasket Line Array Horn
- Gasket 339391-001 12"

- Driver, HF 2408J (361549-003X) Diaph Repl D16R2408

- Screw, (2) 354379-003 3/16 DIA X 1 LG (Shldr)
- Foam Pad (2) 361372-001 Rigging

- Grille Assembly 352282-001
- Driver, Low Freq 2262FF (363946-001X) Cone Repl C2X2R2262
- Screw (6) 882-51110-12 6 X 3/4 OV,PH,PTCL, BLK ZC,LCS
- Screw (8) 804-01110-16 10-32 X 1 FIL,PH,BLK ZINC,LCS
- T-Nut (8) 61861 10-32 X 7/16 Step Barrel
- Dust Dome 71646-04

- \*Gasket (2) 352378-002 Line Array Horn

- Gasket,Pole Mount 363605-001

- Pole Cup, Dual 363602-001

- Overlay, Dual Cup 364659-001 Pole Mount

- Screw (6) 806-11010-12 1/4-20 X 3/4 FLT,PH,UNC, BLK ZINC,L Pole Mount

- Nut (6) 804-90003-00 T-Nut, Short Barrel Pole Mount

- Foot (4) 353445-001

- Screw (4) 884-41110-12 10 X 3/4 PAN,PH,PB, BLK ZINC,LCS

- Screw (20) 882-41110-12 6 x 3/4 PAN,PH,PB, BLK ZINC, LCS

- Handle, Rear (2) 354544-001

- Screw (4) 722-90008-08 6-19 X 1/2 HI-LO,PAN,PH, BLK-OX

- Quick Release (2) Pin 361239-003 W/Lanyard L/Shape

- Handle, Front (2) 354543-001

- "U" Channel (2) 361417-001

- Screw (4) Rigging Channel 803-11010-12 8-32 X 3/4 FLT,PH, BLK ZC LCS

- Clip Pin (4) 363764-001

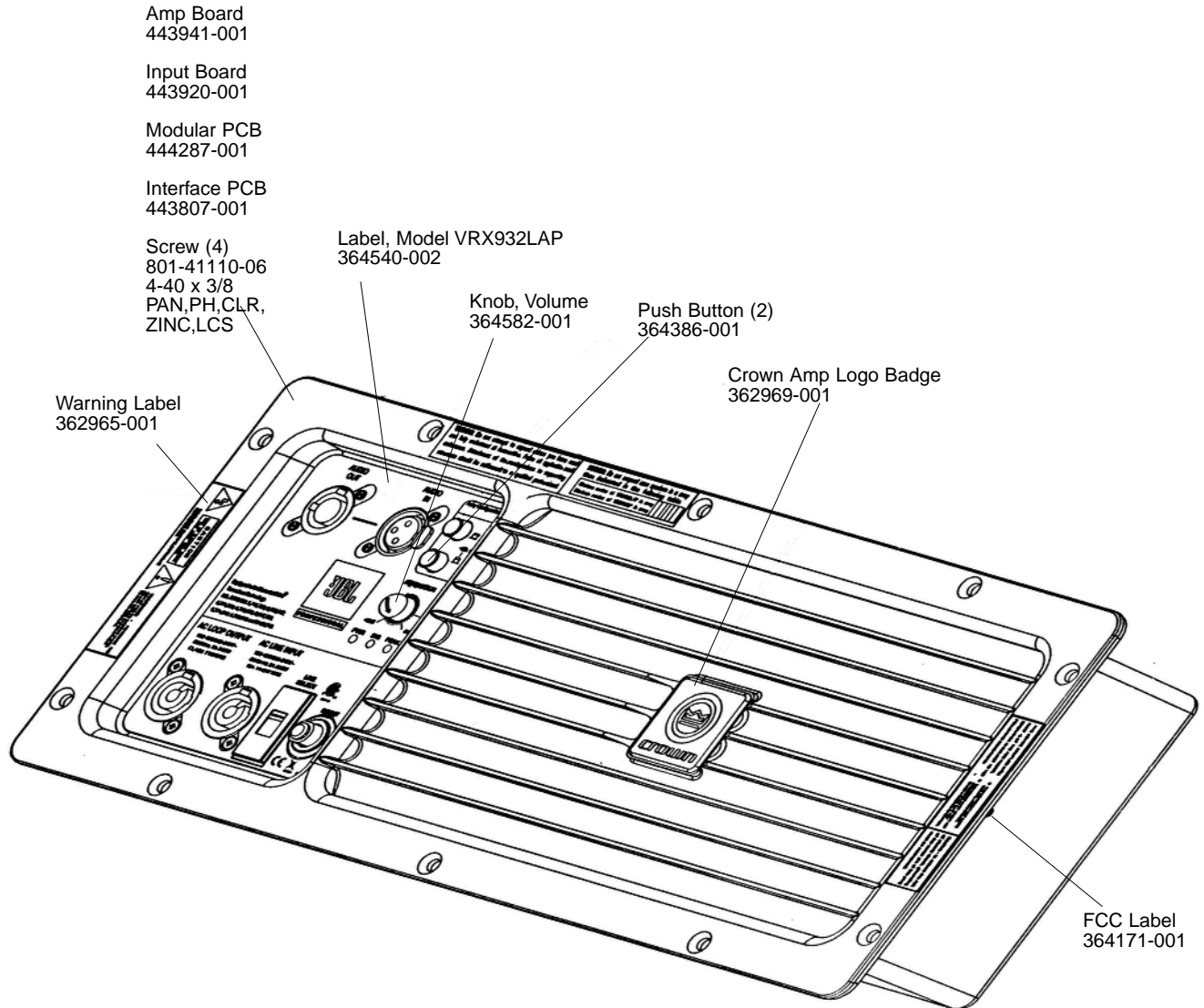
- Screw, Clip (4) 882-41110-10 6 X 5/8 PAN,PH,PB,BLK ZINC,LCS

JBL VRX932LAP/230

# JBL VRX932LAP/230

## AMPLIFIER ASSEMBLY

363679-004

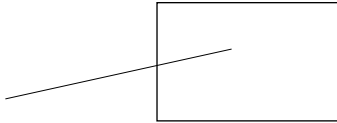


JBL VRX932LAP/230

# JBL VRX-AF

## ARRAY FRAME ASSEMBLY

Manual  
353551-007



- 4" 1/4-20 bolts to horn — 5" — caution! You can break the horn at 60"/lbs, which is pretty easy with a ratchet (pull on the end of a 1' handle with 5 pounds). 35"/lbs = 2.9 ft/lbs.
- Screws to handle cup from outside of rigging frame — 16"/lbs. Current production is getting machine screw and keps nut on deviation (which could take much more torque), but when we switch to sheetmetal screw (which can be serviced without removing horn/grille), it will be sensitive (likely failure torque <30"/lbs)
- Woofer screws, typical 22"/lbs.
- M10 rigging screws — 40"/lbs minimum; don't forget the threadlock! Ditto the 1/4-20's on the pole mount (except no threadlock)

\*VRX Service Kit (includes):

Drop Level Black VRX932LA  
361319-001

Nut, Keps (2)  
832-30010-00  
Steel BLK ZINC  
and EM LUBE

Screw (shldr) (2)  
354379-001  
3/16 DIA X 1 LG

