

MAXIM II

INFRARED WIRELESS
SOUND FIELD SYSTEM



TeachLogic
FOR SOUND LEARNING

MAXIM II

Infrared Wireless Sound Field System



Page Mute / Over-Ride with Page Pass through System. Selectable Input: 25v, 70v, 100v



WITH THE ADVENT OF TEACHLOGIC'S ADVANCED DIODE TECHNOLOGY, infrared transmission has become the preferred mode of wireless microphone communication. WHY? Because infrared transmission is less susceptible to outside interference and will not penetrate through walls, ceiling, or floor.

“ WHAT'S SAID IN THE ROOM STAYS IN THE ROOM. ”

THE MAXIM II IS THE ULTIMATE SOUND FIELD SYSTEM for group presentation; whether it be in a classroom, corporate boardroom, or a secured briefing SCIF. The two wireless microphone channels provide freedom of movement and permits hands free performance. The three auxiliary inputs provide multi media integration to supplement your presentation for a professional, effortless performance.

The ultra sensitive dome sensor provides reliable signal reception from the microphones and feeds the powerful amplifier. The amplifier powers the four high quality speakers for crystal clear sound and even distribution throughout the listening area.

The system includes your choice of wireless microphone / transmitter with rechargeable NiMH batteries and a convenient drop-in charger.

The charger will restore the charge and maintain the NiMH batteries.

Maxim II Features: *(bold are new features)*

- **Two Power Amplifiers, 16-watt ea.** into a 4 ohm load. **32 watt max** (RMS)
- Connect Up to four Speakers. Connect two 8Ω speakers in parallel with one home run to each amplifier for more efficient speaker installation.
- Two internal IR receivers for simultaneous use of two IR microphones with individual volume controls.
- Two IR sensor inputs if an additional sensor is required for broader or remote area coverage.
- **Three stereo auxiliary inputs (line level) with +15db gain control** for added sensitivity to facilitate various media inputs; DVD, Computer, VCR, Video Projector, etc.
- Front panel (3.5mm) auxiliary input for an ipod® or similar device. The third rear panel Aux. input will be disabled when the front panel input is activated. The third Aux. volume control will regulate its volume.
- Line output (pre-fader) for recording, feed to another amplifier or media device.
- Front panel line output (3.5mm) with a gain control for individual hard of hearing system (ALS).
- **Page Over-ride (muting) with Page Pass through** to the classroom sound field system. Selectable Input: 25v, 70v, or 100 volt speaker level with adjustable gain control.
- **Five band equalizer** for optimum vocal clarity and room acoustics compensation.
- Rack or Undershelf Mountable, Free Stance



Ceiling Speakers SP-628

- Air Sealed Metal Can with White Grille
- 6" Cone Driver with a 1" Mylar Dome Tweeter
- Frequency Response: 80 - 15,000 Hz
- Power Handling: 30 watts Nominal, 60 Peak
- Impedance: 8Ω
- Three Quick-Mount Clamps
- Includes 125' Plenum Rated Cable and Tile Bridge

#3146048 Plenum Certificate





Dual Drop-In Charger **BRC-202**

- Convenient drop-in insertion
- Charge pendant and handheld mics simultaneously
- Optimized charge rate for NiMH batteries
- Recycle function to extend battery life
- Auto protect circuit to prevent re-charging non-rechargeable batteries
- Auto full charge maintenance

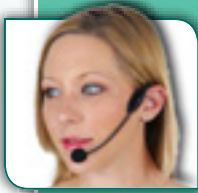
Single Insertion-Dual Function Drop-In Charger **BRC-101**

- Drop-in either Pendant or Handheld
- Recharge slot for two "AA"
- Optimum NiMH charge rate
- LED function indicators
- Recycle function to extend battery life
- Auto protect circuit to prevent re-charging non-rechargeable batteries
- Auto full charge maintenance



Pendant Transmitter with Optional Plug-In Mic. **IRT-89 with LM-300**

- Small and lightweight
- Powerful infrared output
- Dual Internal microphones
- Mic input jack- Center/Top
- Battery level indicator
- Power switch
- A/B channel switch
- Volume control
- Rechargeable batteries
- Convenient drop-in charger
- Adjustable lanyard with breakaway safety clasp



Headband / Boom Microphone **HBM-835**

- Excellent Vocal Quality
- Very Efficient Low Vocal Volume
- Output Unaffected by Head Position
- Least Prone to Feedback



Lapel Microphone **LM-835**

- Small Capsule Size
- Unidirectional Pick-Up
- Spring Clip
- Windscreen



Handheld Microphone Transmitter **IRH-30**

- Transmitter with dynamic mic element
- Ten high powered emitting diodes
- Power on/off switch
- Rechargeable NiMH batteries
- Battery level indicator-LED



Ultra Lite Mic **ULM-835**

- A miniature element on a very small boom gives this microphone several virtues-lightweight, high performance, comfort and low visibility. Available in Tan or Black.

Drop-In Charger for Handheld with Body-Back **IRH-30 and IRB-30**

- Convenient drop-in insertion
- Positive battery contact
- Optimum charge rate for NiMH battery
- Charging mode indicator - Red LED
- Full charge indicator - Green LED
- Recycle function - extend battery life
- Auto protect circuit to prevent recharging non-rechargeable batteries
- Auto full charge maintenance



Wall Mount Speakers **SP-2000**

- Two-Way Speaker with a 5 1/4" Woofer and a Domed Tweeter in a Ported Enclosure
- Shielded Magnet to Prevent Video Interference
- Frequency Response: 80-18,000 Hz
- Power Handling: 40 watts Nominal, 80 Peak
- Impedance: 8Ω
- Reinforced ABS Enclosure with Metal Mesh Grille Includes 125' Plenum rated Cable and Mount Brackets

Body-Pack Transmitter **IRB-30**

- Ten high powered emitting diodes
- 180° high level infrared transmission for reliable performance
- Volume control for mic
- Power on/off switch
- External input, 3.5mm

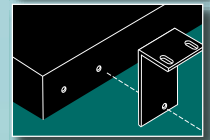
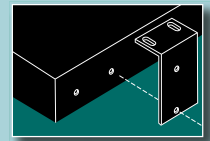


All Maxim II Systems Include:

- Maxim II Receiver / Mixer / Amplifier (IMA-420)
- Ceiling Dome Sensor (30 Diodes) with 50' Plenum Rated Cable (ICS-50)
- Four Speakers – Either Ceiling Mount with Tile Bridge or Wall Mount with Bracket (CS-4 or WM-4)
- 100 Feet of Speaker Wire (Plenum Rated), 18gauge (West Penn)

- IRM-4000* System with Body-Pack Transmitter (IRB-30) including choice of microphone: Plug-in LM-300 (P), Collar CM-835 (C), Headband/Boom HBM-935 (H), or UltraLite ULM-835, Black or Tan (UB or UT at an additional cost), and Drop-in battery charger (BRC-30)
- IRM-4100 System with Pendant Transmitter (IRT-89) with plug-in unidirection microphone (LM-300), Lanyard, and Drop-in battery charger (BRC-101)
- IRM-4200 System with Two Pendant Transmitters (IRT-89) each with a unidirection plug-in microphone (LM-300) and a Dual Drop-in battery charger (BRC-202)
- IRM-4500* System with a Handheld Transmitter / Microphone (IRH-30) and a Body-Pack Transmitter (IRB-30) with choice of microphone: Plug-in LM-300 (P), Collar CM-835 (C), Headband/Boom HBM-935 (H), or UltraLite ULM-835, Black or Tan (UB or UT at additional cost), and Drop-in battery charger (BRC-30)
- IRM-4600 System with a Handheld Transmitter / Microphone (IRH-30) and Pendant Transmitter (IRT-89) with plug-in microphone (LM-300) and Dual Drop-in battery charger (BRC-30)

* Add italicized letter in parenthesis to model number indicating choice of microphone. Example: IRM-4500C



Under Shelf Mount (SM-700)

Amplifier / Receiver (IMA-420)

Amplifier and Mixer	
Four Power Amplifiers:	12 watt ea. into 8Ω load 16 watt ea. into 4Ω load 32 watt Total
Frequency Response:	40Hz – 18KHz, ±3 dB
S / N Ratio:	>65 dB
THD:	<1% @ 1 KHz
(3) Aux Inputs	Line Level w/+ 15dB gain
Front Panel Input	Line Level (3.5mm)
Front Panel Output	Line Level w/ gain for AIS
Line Output	Line Level (Pre-fader)
Equalizer	5 Band, ± 12dB
Page Override/Pass Through	
	Speaker Level Input 25v, 70v, 100v Selectable Gain Control
Power Supply	15v DC, 2.8A, 42 watt CE, CSA, and UL Listed

Infrared Receiver Section

Two IR Receivers:	Channel A: 2.08 MHz Channel B: 2.54 MHz
Receiver Sensitivity:	6μV for 60 dB S/N
Modulation	FM wide-band
Nominal Deviation	± 10KHz
Maxim Deviation	± 25KHz
Receiving Range:	2500 Sq. Ft. 60 Ft. Line of Sight
External Sensor Inputs: Two	
Dimensions:	9" W x 1.75" H x 8" D
Weight	3.5 lbs. (1.6 Kg)

General Specifications for IR Transmitters (IRT - 89), (IRB - 30), (IRH - 30)

Transmission Carrier:	Infrared
Transmission Frequencies:	2.08 MHz & 2.54 MHz
Channel Switchable A or B:	Field Switchable
Transmitting Diodes:	Ten
Modulation:	FM Wide-Band
Pilotone Frequency:	32.768 KHz
Peak Deviation	± 25KHz
Operating Range	2500 Ft ² . 60 Ft. (One Sensor)
Power Switch (Slide)	On / Off
Battery Charge Level:	Green LED (Useable Charge) Red LED, (Needs Recharge)
Battery (Duracell)	Two "AA" NiMH, 2650 mAh
Battery Life:	Approx. 7 Hr./Charge
External Battery Contact	Drop-in Charger Connection

Pendant IR Transmitter (IRT-89) with (LM-300)

Adjustable Lanyard with	Safety Breakaway Clasp
Transmission Angle:	180°
External Microphone Input:	Top / Center
Microphone Input:	3.5mm Jack, Lo-z
Waist Band Clip:	High Tension Wire
Dimensions:	5.25" H x 1.5" W x 1" D
Weight:	4.8 Oz. with Batteries

Body-Pack Transmitter (IRB-30)

Adjustable Lanyard with	Safety Breakaway Clasp
Transmission Angle:	180°
User Controls;	Mic. Volume Power On / Off IR Power Output (Hi / Lo) CH. Select (A or B)
External Mic. Input:	Lo-z, 3.5mm, Phantom Pwr.
Waist Band Clip:	High Tension Wire
Dimensions:	4¾" H x 2¾" W x ¾" D
Weight:	4.8 oz. (with batteries)

Handheld Transmitter/ Microphone (IRH-30)

Hand Ergonomics:	Tubular, Low Handling Noise
Power Switch:	On / Off Slide
Battery Charge Level:	Green LED (Useable Charge), Red LED (Needs Recharge)
Battery	Two "AA" NiMH, 2650 mAh
External Battery Contact:	Drop-in Charger Connection
Dimensions:	10" L x 1 ½" D
Weight:	11.4 oz. (with batteries)

General Specifications for Drop-In Chargers

Charging rate:		Optimized for NiMH Battery
Charging Current:	1700 mA ±10%	
Auto Protect (Flashing LED's)	Defective Battery	
Recycle Function:	Auto Discharge & Recharge	
Charging Time:	2 - 4 Hrs.	
Power Supply:	12VDC / 1.0 Amp. (12 watt)	

Drop-In Charger (BRC-30)

Charging Ports (Two)	Body-Pack and Handheld
Red LED:	Batteries being Charged
Intermittent Audible Alert:	Battery Fully Charged
Dimensions:	6½" W x 3¼" D x 1½" H
Weight:	12.2 oz.

Single Insert Charger (BRC-101)

Charging Port (Single):	Pendant or Handheld
Flashing Red LED:	Batteries being Charged
Dimensions:	5" W x 3¼" D x 1½" H
Weight:	7.4 oz.

Dual Drop-In Charger (BRC-202)

Charging Ports (Two)	Pendant or Handheld
Flashing Red LED:	Batteries being Charged
Dimensions:	7½" W x 3¼" D x 1½" H
Weight:	14.8 oz.

Accessories and Replacements

SM-700	Under Shelf Mount Kit
BR-2AA	Two "AA" NiMH Batteries 2650 mAh, Duracell
ULM-835	UltraLite Microphone
HBM-935	Headband / Boom Mic.
LM-835	Lapel Microphone
LM-300	Plug-in microphone

TeachLogic
FOR SOUND LEARNING

1688 Ord Way
Oceanside, CA 92506
Phone: 800.588.0018
Fax: 760.631.1283

www.TeachLogic.com



powered by

