



Welcome to Rust 3, a true paradigm shift in metallic tuned and kit percussion. This long-awaited third installment in our legendary Rust series explores a brand new way of bending this classic genre of found-sound percussion into ever more musical directions. Our first Rust library focused on tight nuanced hand, mallet and stick percussion in a mostly dry environment, from paint cans to dumpsters. Rust II leaped into big cinematic and unique environmental sounds, with army bunker blast shields, prison door slams, huge bronze sculptures.

With this grand 3rd volume, we set out to conquer powerful bass and rich musical tone, recording a massive variety of surfaces, objects, oddities, apparatuses and custom contraptions very up-close in wide stereo to capture even the most subtle of resonances and overtones. We aimed for a collection that would offer uniquely alternative drum kit concepts, richly complex tuned percussion, dramatic effects and stingers and a huge wealth of sustaining lead, pad and ambient instruments. We reached for crystalline highs and mind-melting lows. We wanted a library that could stand on it's own, capable of producing limitless musical potential all by itself. With well over 100 unique sound sets, plus tons of sustaining and effect elements, covering a total spectrum of metallic flavors, this iron beast definitely delivers on that promise.

However, we weren't simply content to offer up a mightily package of playable sound and call it done. A library this complete demands a complete user interface experience, with endless creative possibilities within easy reach and optimal ram efficiency. Each preset offers realtime control over every aspect of the sound, allowing you to shape note Attack and sample Offset to create gentle, ghostly pad-like sounds from even the harshest impacts. The Release control let's you tighten the sound into a sharp staccato click or ping in one moment, or a long ringing sustain the next. Tuning is easy, with the Stepping and main Tune parameters. Our powerful *Uberpeggiator* allows complex, adaptive arpeggiations and you'll find tempo-syncing resonant filter and volume LFOs build into nearly every preset. We've also included a parametric EQ and convolution reverb with over 50 room and FX impulses to choose from instantly.

We've also included our mighty *Mega Mixer* master preset, which lets you choose from any of the percussive elements in the library, load 10 of them dynamically, each with custom key-range, tuning and mapping to create your own ensembles, drum kits and tuned percussion orchestras. Our *Layer Builders* each feature a dozen independent hand-picked sonic layers, each with control over every parameter to create truly unique custom tuned hybrid instruments. The *Tuned Selector* Ensemble presets give you instant access to sub-categorized collections of solo tuned percussion elements, with easy browsing and automatable instrument selection, while the standard ensemble presets lay it all out for you in convenient untuned drum-kits. Our *Rustains*, *Drone Rig* and *Rumbiences* sustain kits allow you to quickly jump through a wide selection of fluidly organic tonal and atmospheric sounds and smoothly morph between them, with optional polyphonic legato and tempo-syncing filter and stutter effects, with full waveform shape control. This library is designed to be easy to use and inspiring to work with, with an incredible depth of sonic potential suitable for use in any musical and sound design genre.

# SOUNDIRON

## Rust 3 version 1.0

### OVERVIEW

49 open-format Kontakt instruments (36 K4 presets / 12 K5 presets)  
 2,238 Samples  
 3.63 GB Installed  
 24bit / 48kHz stereo PCM wav samples (non-encrypted)  
 Powerful custom performance and FX control interface  
 Bonus unique FX ambiences and atmospheres  
 Bonus: 51 custom convolution reverb impulses

#### Note:

- The full version of Kontakt 4.2.4 or later is required for most presets in this library.
- The full version of Kontakt 5.0.3 or later is required for all “K5” presets.
- The free Kontakt “Player” does not support this library.

### CREDITS

Production, Programming, Recording and Performance by  
 Mike Peaslee and Gregg Stephens

Editing by  
 Mike Peaslee

Scripting & Systems Design by  
 Chris Marshall

UI Design, Artwork & Photography by  
 Constructive Stumblings, Gregg Stephens, Chris Marshall and  
 Mike Peaslee

Beta Team:

Brad Halverson, Xiaotian Shi, Dirk Ehlert, James Semple,  
 Max Zhdanov, Shannon Penner, Paul Amos, Sascha Knorr,  
 Russell Bell, Reuben Cornell and Oliver Codd.

### TABLE OF CONTENTS

#### General ::

INTRODUCTION - Page 1  
 OVERVIEW & CREDITS - Page 2

#### Technical ::

FIDELITY, ACOUSTICS, FORMAT & CONVOLUTION - page 3  
 SYSTEM REQUIREMENTS, DOWNLOAD & INSTALLATION - Page 4

#### User Interface ::

MAIN FRONT PANEL CONTROLS - Page 5  
 EQ CONTROLS - Page 6  
 UBERPEGGIATOR CONTROLS - Page 7  
 LFO & FILTER CONTROLS - Page 8  
 CONVOLUTION REVERB CONTROLS - Page 9  
 SUSTAINS & LEGATO CONTROLS - Pages 10  
 MEGAMIXER CONTROLS - Page 11  
 MASTER LAYER CONTROLS & PRESET SUB-TYPES - Page 12

#### Instrument Descriptions ::

ENSEMBLE PRESETS - Pages 13 - 14  
 SUSTAINS, EFFECTS & MASTER PRESETS - Pages 14 - 16

#### Info ::

GALLERY - Pages 17 - 18  
 LICENSE AGREEMENT - Page 19  
 THANK YOU - Page 20



[www.soundiron.com](http://www.soundiron.com)

# ABOUT THIS LIBRARY

## Fidelity

This library was recorded in wide stereo at 48kHz / 24bit, with some content recorded in a studio environment and some recorded out on location in a natural field/livestock corral, so you'll hear environmental coloration and tone as well as a few background impurities in some samples, especially in the hall far C mic position. We feel these subtle natural imperfections add life and character to the sound. Therefore, please keep in mind that this library isn't designed to provide perfectly quiet or sterile samples.

## Format Accessibility

All of the sample content and impulse files are included as standard non-encrypted PCM wav files and standard open-format Kontakt presets to allow you easy access to manipulate, reprogram and customize the sounds however you prefer. We know that it's important for many users to be able to go beyond the limitations of any one sampler or preset structure, so we've kept this library's directories and files open for advanced users. As a professional, you may have your own workflow or format requirements, and we trust that you'll respect our hard work and won't share this content with anyone who hasn't paid for it.

Keep in mind that to use and/or edit the Kontakt presets, you'll need the full retail version of Native Instruments Kontakt 4.2.4 (K4) or Kontakt 5.0.2 (K5) or later. Please be aware that the free Kontakt "Player" and any other version or form of Kontakt that came bundled with any other library or software product (other than NI's "Komplete" package) will not support this library. The free Kontakt Player is NOT a full version of Kontakt and cannot load or play standard open-format Kontakt instruments or libraries.

Please read all instrument specs and software requirements before purchasing this or any other Soundiron products to see the full list of software requirements, features and format compatibility for each library.

While you can reprogram the samples or presets to other formats, we always recommend using Kontakt for best results, since it widely considered the industry standard and easily the most powerful sample programming and playback platform on the market. However, if you wish to convert or reprogram the wav files and instrument presets into any other sampler or softsynth format, be aware that not all settings and properties will translate accurately, reliably or even at all from one instrument or audio format to the next, due to vast differences in standards, behaviors, structures and capabilities that each platform relies on.

## Custom Convolution Impulses

We enjoy capturing the unique acoustic characteristics of spaces and locations that we come across from time to time. Sampling environments is similar to sampling instruments in many ways. It's done with portable loudspeakers to produce a special sine wave sweep that covers a wide spectrum, from 22 Hz to 22 kHz. We then use dedicated deconvolution software to decode the resulting audio into an impulse response file, which is a wav file with special phase, frequency and timing information embedded in the audio.

Most impulses sound like an odd sort of sharp snap, like a balloon pop or starting pistol fired in the environment that was captured – which is in fact how impulses used to be made. When loaded into a compatible convolution reverb effect (such as the one built into Kontakt), these impulses impart their sonic properties fairly well into most sounds. Of course, it's an imperfect science and much is lost in the translation, especially if the sound being played through it also has its own strong tonal, phase or reflective properties. Sometimes the results are incredibly lifelike. Sometimes they're awful. It all depends on the sound, the impulse, the plugin and the settings used. Then again, you may find some unexpectedly useful and interesting results through a little experimentation.

We've included a hand-selected collection of impulse files that we think compliment this library's sound. You can load them into most instrument presets by using the "Convolution" control panel tab and selecting an impulse from the Impulse drop-down menu. You can also manually import any of the wavs in the Impulses directory into any IR wav-compatible convolution effect plugin of your choice. Just please just make sure to keep your speakers or headphones turned down while you experiment. Convolution processing can often create powerful and piercing resonances when applied to many audio sources – especially loud sounds that contain strong mid to low frequency harmonic components.

## System Requirements

Please be aware that many instrument and multi-instrument programs in this library are extremely ram/cpu and hard disk-streaming resource intensive. We highly recommend that you have a 64-bit operating system (Windows or OSX) with *at least* 4GB of system ram, a quad-core cpu and a 7200 rpm SATA hard disk or better before purchasing this particular Soundiron library. Large sample sets like those found in this library may load slowly and may cause system instability on older machines.

## Download & Installation

We provide the Continuata Download Manager to offer high-speed, reliable and fully automated library downloading and installation. Download and run the latest version for your OS (PC or Mac) before proceeding. You'll also need Java v1.6 or later. You may also need to add special permissions to your security software for the downloader, if it blocks applications from accessing the web.

Next, copy-paste your download code from your download email into the Code box in the downloader window. Make sure to leave out any spaces before or after the code. Press the download button and select the location you'd like to download and install the library. It will automatically start downloading the file(s) and then error-check, extract and install the finished library. Once installation is fully complete, you can remove the .rar download files and store them in a safe place as a back-up copy. We always recommend downloading the latest version of our downloader before you begin. The link in your email will always take you to the latest version.

Don't move, rename, delete or modify any of the files or folders created during the download until after you see the status message for all files in your download queue display the word "**INSTALLED**". Please don't close the downloader while it's actively downloading, unless you press the pause button first. To resume downloading,

press the Resume button. If you need to resume downloading after closing the downloader, run it again and enter your code and press Download again. Then select the same download/installation location on your computer that you chose originally.

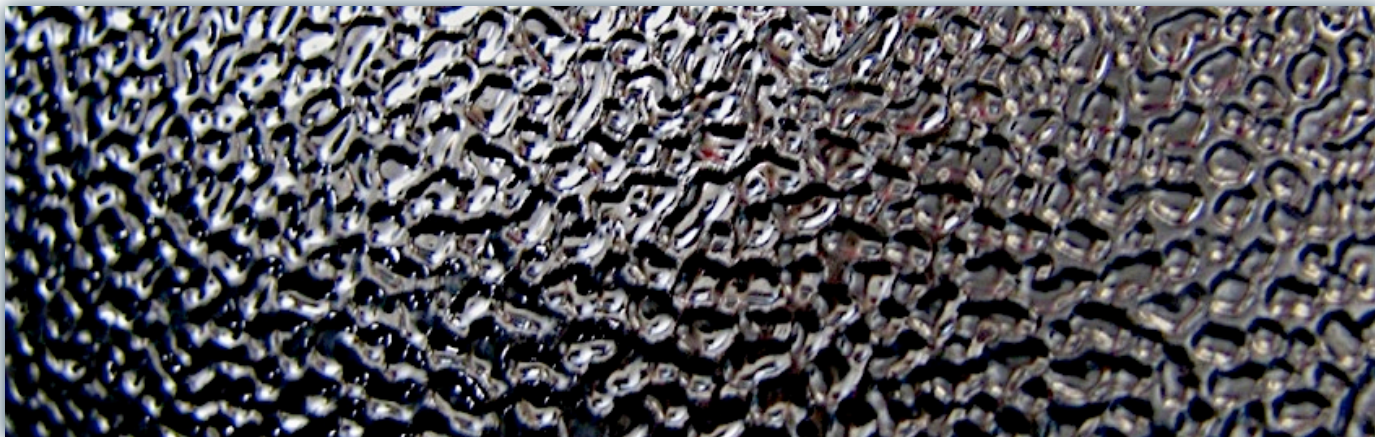
If the downloader reports a DL Error or Install error, it will usually try to download the file again until it successfully downloads and verifies all the data it needs. It's best to allow it to finish the process before trying to move or access the library data. Please see your download email for more detailed instructions.

## Manual Download

If you have any trouble with our Downloader utility or prefer to use your browser or another download manager, log into your personal manual download page on our website, by using the direct link in your download email. Log in using your download code and the email address you used to order. Or, if you used the downloader originally, but you need to re-install the library manually for any reason at a later time you can always re-use the original rar files. To do that, you'll need Winrar, UnrarX or another full-featured Rar extraction utility to extract and install the library. Please note that Stuffit Expander and Winzip **DON'T** support many types of common rar files.

## Preset Loading

Once installation is complete, you can browse and load the included .nki presets using the Files or Database tabs in the Kontakt Browser, or through the main File load/save menu. Please allow presets to finish loading completely before loading a new one. You can't use the Libraries view to load standard open-format Kontakt Instruments like this library. Only locked "Powered-By-Kontakt" Libraries are visible to that propriety browser view. The "Add-Library" function does not support this product or any other open-format Kontakt library. This library doesn't require any special activation.



## Main Front Panel Controls

This instrument has a variety of special front panel performance controls that allow deep real-time performance customization. Not all instrument presets include all controls listed below. Included controls depend on the specific features suitable for each preset. Some may also use alternate CC mappings. You can see each control's assignment by clicking on each UI control to display the "hint" text in the Info bar at the bottom of Kontakt. These controls are included in most presets and control basic sound-shaping parameters.



### **Swell - (CC72)**

This knob smoothly controls volume swelling for the instrument, allowing you to fine-tune volume, or fast or slow fades over time.

### **Attack - (CC 94)**

This knob controls the sharpness of attack. Increasing the value causes the sound to attack more softly.

### **Offset - (CC91)**

This controls the amount of sample start offset allowing you to jump ahead into samples to change the sound.

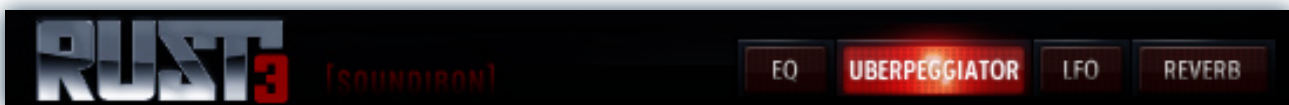
### **Release - (CC93)**

This controls the release time of the main note samples. Lower settings cause the sound to be damped and cut off, while higher settings allow notes to blend together.

### **Stepping**

This knob controls the amount of pitch stepping in semitones allowing users to globally tune an instrument up or down by +/- 36 semitones.

## Tab Area Button Bar Controls



### **EQ, Uberpeggiator, LFO, Reverb and Global\***

These buttons change which controls are displayed on the lower right panel of the UI, allowing one to control the various parameters of each effect. See more detailed descriptions of these controls later in this document.

\*The Global tab is in the Mega Mixer patch only. Uberpeggiator is not included in the Mega Mixer preset

## EQ Controls

The EQ tab contains three separate sweepable equalizer bands featuring an adjustable frequency knob for the Mid control. This special panel can be found in all of the instrument presets.



### EQ3 On/Off

This button enables/disables the 3-band Parametric EQ.

### Low Gain

This knob sets the amount of gain for the bass frequency band.

### Mid Gain

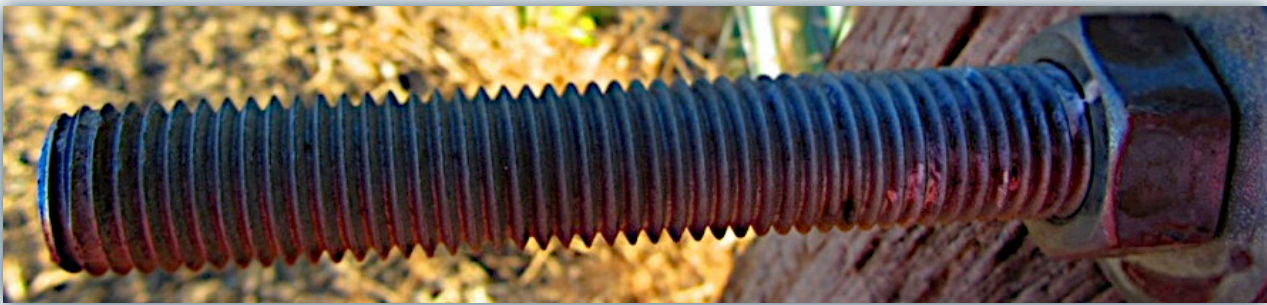
This knob sets the amount of gain for the mid band.

### Mid Frq.

This sets the center frequency for the sweepable mid band.

### High Gain

This knob sets the amount of gain for the treble frequency band.



## Uberpeggiator Controls

Rust 3 features a flexible, custom arpeggiator system to expand the instant creative potential of some of the presets. It includes automatable performance controls that shape all aspects of the arpeggiator. When used normally, pressing a key causes the note to self-repeat as long as a key is held down. If additional notes are played, it adds them to the sequence of repeats in various ways, depending on the settings you choose and can be used to produce complex melodic chains, plucking patterns and other effects.



### Mode

This knob controls the Arpeggiator mode. Choosing **Off** disables the Arp system entirely.

- **On** sets it to respond only while a note is pressed., cycling through all held notes as it arpeggiates.
- **Hold** sets it to automatically sustain one note at a time, (monophonic) so that changing keys changes the note that is repeating.
- **Hold +/-** sets it to allow new notes to be added to the automated chain of repeats.
- **EZ Roll** is a special mode that allows easy single-stroke roll creation, based on your tempo, rhythm and the amount of swing and randomization you want on the timing and velocity of each stroke. Most other controls are bypassed. You can use the velocity table or use incoming velocities "As Played".

### Hits and Hit % Knobs

Sets the number of repeats of each note **BEFORE** moving on to the next note in the arp sequence, and Hit % sets the intensity fall-off rate for each repeat, before resetting for the next note.

### Repeat Setting

This sets the direction of the up or down repeats.

### Rhythm

This sets the speed of arpeggiation, as measured in musical time, ranging from whole bars to 128th notes. Fast settings

can yield interesting results, but keep in mind that the faster the speed, the more voices you use.

### Pitch

Sets the pitch up or down in quarter-tone intervals for each repeat **AFTER** the initial note is pressed and it remains in a pseudo legato state as long as any key is held down. Changing this setting in real-time allows extreme "glitch" and stair-step effects and can self-generate strange grooves and beats, based on the combination of notes you hold.

### Note Order Menu

This drop-down menu allows you to select any number of simple or complex cycle patterns that the arpeggiation will follow as it plays through the sequence of notes you have triggered. Choosing "As Played" will cause it to follow the original order you played the notes in, with the newest note always added to the end of the chain.

### Swing

This sets the amount of rhythmic offset (swing) between notes. Values below zero cause the notes to play ahead of the beat. Values above zero cause the notes to play after the beat.

### Duration

This knob allows the user to fine-tune the length of each note. Using this, one can shorten the note to staccato-like pulses or extend them beyond the normal beat length.

### Random

This control allows you to add a bit of subtle humanization to velocity and timing for each repeating note in the roll.

### Key Selector Knob

Binds the arpeggiation **scale** you've chosen to a specific key.

### Scale Selector

Control binds the arpeggiation sequence to a specific scale that you can choose by turning the knob.

### Free/Constrain Button

Limits and adjusts any new note to the currently selected scale and key.

### Velocity Graph Sequencer

This graph allows you to draw the velocities that you want each step in your arpeggiation sequence to play at.

### Reset

This button resets all steps in the graph to a default value of 0 (blank).

### Steps

This setting determines the number of sequencer steps (2 - 32) that can be set with the velocity graph step sequencer.

### As Played / Table

This activates the Graph. When active, the arpeggiation follows the velocities that you've drawn on the graph from left to right. When it is bypassed, each note is played at the velocity that it was originally played at.

## LFO/Filter Tab

The LFO tab contains controls for the integrated LFO's for Volume and Filter. These allow you to create subtle or extreme tremolo and filter sweeping effects. Note that when the Filter LFO is on, the control for Cutoff is disabled and grayed out.



### Filter On/Off Switch

This button enables/disables the Lowpass Filter effect.

### Cutoff

This knob sets the filter cut-off frequency.

### Resonance

This knob sets the amount of filter resonance.

### LFO On/Off Switch

This button enables/disables the LFO for the Lowpass Filter effect.

### Free/Synch Mode Switch

This allows you to switch between freely adjustable LFO speed control and tempo-synching mode. If you toggle between these modes in real-time, each mode will remember the last selected value you set for that mode.

### Intensity

This controls the depth of the LFO. Turning this knob all the way down to the left will turn off the LFO completely.

### Rate

This controls the speed of the LFO. In free mode, it is smoothly sweepable in real-time and displays the current speed in Hertz (Hz). In Synch Mode, it displays standard time signature divisions, relative to Kontakt's current internal tempo, which can also be controlled by your host sequencer. Please be aware that if an LFO is in Synch Mode, you may hear clicking or popping if you change its time signature Rate value knob while any notes are still currently playing. This is due to functional limitations within Kontakt's internal scripting engine and LFO syncing system. If you wish to change the speed of the LFO in real-time while notes are playing, we recommend using "Free" mode.

### LFO Shape Menu

These drop-down menus are only included in the tuned and effect presets. They allow you to select the waveform shape of the LFO from Sine, Rectangle, Sawtooth and Random. The default shape is a smooth Sine wave.



## Convolution Reverb Controls

We've incorporated our custom convolution impulses into each instrument preset, with full control over all available convolution effect parameters.



### Convolution On/Off

This button enables/disables the convolution reverb effect.

### Custom On/Off

Turning this button “On” allows for custom impulse loading. It bypasses the ability to load any of our provided impulses so users can save custom presets with custom impulses.

### Dry

Sets the amount of dry gain (+/-) that is passed through the effect.

### Wet

Sets the amount of wet gain (+/-) that is passed through the effect.

### Size

Sets the simulated room size of the convolution.

### Low Pass

Sets the low frequency cut-off of the impulse response, allowing you to dull and darken the sound.

### High Pass

Sets the high frequency cut-off of the impulse response, allowing you to remove rumble and low end.

### Delay

Sets the amount of pre-delay time before the wet signal is returned

### Impulse menus

These menus allow you to select from a wide variety of custom convolution reverb impulses that we've personally captured or created for you, separated into experimental FX impulses and simulated real-world spaces.

### Effects

This menu allows you to select one of our special effect convolutions. Selecting an impulse from this menu overrides and unloads any currently loaded impulse from the Spaces menu.

### Spaces

This menu allows you to select one of our real-world environmental convolutions. Selecting an impulse from this menu overrides and unloads any currently loaded impulse from the Effects menu.

## Sustains Controls

Sustains presets contain most of the standard sound-shaping controls as normal presets, but also offer some different functionality. In place of the Uberpeggiator, these patches contain a Legato tab.



### Low

This knob selects the active Sustain for the Low layer.

### High

This knob selects the active Sustain for the High layer.

### Blend

This knob blends between the Low and High layers, allowing users to morph between any two ambiances.

## Legato



### XFade

This knob controls the amount of crossfade between samples during legato transitions.

### Polyphony

This knob controls the available number of separate legato positions. Using this allows for up to three separate legato melodies to be played simultaneously.

### Range

This knob controls the interval range within which a legato transition will occur. When used with Polyphony, any legato transition played greater than this setting will trigger another legato position.

### Speed

In Sustains presets, the Speed knob controls the speed of the pseudo-legato pitch bend when it is enabled. When turned all the way down, the bend is slow; turned all the way up, the bend is fast.

### Bending On/Off

This button toggles on/off simulated pitch bending during legato transitions.

### Legato On/Off

This button toggles legato mode on/off.

## Mega-Mixer Ensemble Builder Controls

The Rust 3 Mega-Mixer preset provides a special interface that lets you combine 12 different articulations in any key mapping, tuning and arrangement you like. There are 12 loadable articulation modules, each with a window, edit button and vertical slider. Each of these modules has its own independent controls. If you make any changes you'd like to keep, you can save this preset by choosing "Save-As" in the main Kontakt File menu to store your custom settings for later. Make sure to save the new preset with a new file name, in the same "Instruments" folder location, to insure proper loading.



### Instrument Selection Menu

The label of each module is an instrument selection menu and it displays the instrument that is currently loaded into each module. To load an instrument, click on a label of a module and select the instrument from a menu. The sub option for the module selected for editing is displayed on the metal panel in the lower left of the UI. Here you will see the name of the instrument loaded into that module and an articulation selector next to that. Use this menu to switch the instrument's articulation.

### Instrument Volume Slider

The vertical slider next to each window controls the volume level for that module.

### Instrument Articulation Edit Button

The edit button allows you to select the specific articulation you want to load for that instrument and then edit all that articulation's customizable settings. You'll see those controls in the lower right corner of the interface.

### Articulation Selector

This drop-down menu lets you choose the specific articulation to load into a particular module. Each instrument has a unique selection of articulations available.

### Key-Mapping Controls

Under the Layers section you'll find the key mapping controls. Notice the buttons next to "Root," "Low" and "High." The "Root" value sets the root pitch of the layer when the "Tuned" button is active.

This value is represented on Kontakt's built-in keyboard by the **green** key. The "Low" and "High" options are used to set the playable range for the selected module (represented by the **red** keys), allowing users to place drum articulations wherever they want on the keyboard, even overlapping them.

The key-range can also be set using the "Set" buttons. Just click one of the buttons, then press any midi note to set that as the lowest or highest key in the range for the module.

The **blue** keys on the Kontakt keyboard represent the defined key ranges of all other modules, if they extend farther up or down than the module being edited.

### Tuned

When activated, this switch causes the notes for that module to be pitched up and down the semitone scale, with the default pitch centered on the "Root" key.

### Pan

The "Pan" knob allows each module to be panned independently.

### Dynamics

The "Dyn." knob adjusts velocity when a note is played for that module, allowing users to adjust the intensity for each module.

### Microtuning

The "M.Tune" knob controls the amount of pitch microtuning, in steps of 1/100th of a semitone. You can globally tune an instrument up or down by +/- 300 cents (3 semitones).

## Layer Builder Controls

The Rust 3 Layer Builder presets are special presets that combine 12 different articulations together allowing you to sculpt original tuned percussive and sustaining instrument hybrids.



### Layer Selection Button

Click on one of the layer selection buttons to activate the controls for the selected layer. Note that the Volume, Attack, Offset, Release, Stepping and Curve are individually editable per layer. The Swell is global for the entire preset.

### Volume

This knob controls the volume of the currently selected layer.

### Attack

This knob controls the attack of the currently selected layer. Use this control to make a layer behave essentially as a pad.

### Offset

This knob controls the offset of the currently selected layer. This allows you to skip past the transient and farther into the note, to create unique soft notes, or to isolate only the resonant decay.

### Release

This knob controls the release of the currently selected layer. Reducing this value makes the layer more staccato-like.

### Stepping

This knob controls the Stepping (pitch) for the currently selected layer and can be adjusted +/- 24 semitones. This control is useful for creating interesting octave and harmonic layers when combined with other layers at different Stepping values.

### Curve

This knob controls an added layer of dynamics to the currently selected layer. In Off mode, the layer's velocity behavior is unchanged. Normal mode adds enhanced dynamics, further lowering the volume of soft notes, relative to the volume of hard notes, effectively making it a loud dynamic layer. Invert mode flips the dynamic response upside down, reducing the volume as the velocity increase, effectively making it a soft dynamic layer.

# INSTRUMENT PROGRAMS

The instrument presets are divided into three main groups: Tuned, Sustains and Effects.

## ENSEMBLE

The **Ensemble** patches are set up as convenient un-tuned drum kit style arrays, with each articulation spanning several keys to allow easy playing with a midi keyboard. We've divided them into 7 categories.

### Barrel Drums.nki

The Barrel Drums are a metallic and plasticine drum kit made from 50 gallon chemical drums, played with hands, sticks, mallet and boots. They have a fierce punchy sound and a unique springy ring. This preset is mapped from C1 – G3.

### Cymbalid.nki

This preset features large 30 gallon steel garbage can lids, recorded very close to the mic diaphragms to capture maximum warmth and bass tone. These sounds have very long, deep sustains and can often produce tremendously powerful subsonic bass, so be careful when playing them loudly. We used fingers, mallets, sticks and even used them as orchestral crash cymbals. This preset is mapped from C1 – C#5.

### Digging Ditches.nki

This preset features hits, digs, dirt/gravel tosses and other uses of a steel trenching shovels and an aluminum gravel rake. This preset is mapped from C1 – D#3.

### Lonesome Corral.nki

These sounds were recorded in a remote cattle corral on a lonely hill top in the blazing heat of summer. We played gates, fences, railings and signs with mallets, sticks and bare hands. You can just barely hear the baleful wind howling through the tall dry grass and gnarled oak trees in the background. Mapped from C1 – G6.

### Punch Pipes.nki

These are a variety of galvanized steel pipes, grounding rods, beams and heavy rebar being struck with framing hammers and leather mallets, with a classic sharp ride cymbal and bell sounds. This preset is mapped from C1 – B4.

### String Bomb.nki

These were high tension wires and thick rubber straps strung between steel rods over a large resonance chamber, producing a unique whipping spring-back and a round, fat note very similar to that of a stand-up bass. Mapped from C1 – G2.

### The Ernduzk.nki

This bizarre contraption was lashed and bolted together with mismatching steel rods, tubes, cross-bars, grating and heavy glass paneling. The substantial weight, rigidity and natural resonances of the device made it an ideal stand-alone percussion kit and when bowed and dragged over acid treated concrete, produces nightmarish rumbles, roars and screams. This preset just includes the percussion elements. You can find the rest in the Effects and Sustains sections below. Mapped from C1 – B4.



## ENSEMBLE TUNED SELECTOR

You'll find a variation on each ensemble preset with the prefix "Tuned Selector." Tuned Selector patches allow the user to load a single tuned articulation from the full range of sounds included in each ensemble. The selected articulation is tuned and mapped over the entire range of the keyboard. You can also change the articulation in real-time. Once the selection has been changed, the next note you play will use the new articulation, but any previously played note will be allowed to finish playing normally.

You can automate the selection by right-clicking (PC) or command-clicking (Mac) on the menu and clicking on the midi assignment pop-up box. Then move any midi controller you wish to assign to the selector menu to confirm the CC assignment.

### Tuned Selector - Barrel Drums.nki

This is the "Tuned Selector" version of the Barrel Drums preset, mapped from C-2 - G8.

### Tuned Selector - Cymbalid.nki

Mapped from C-2 - G8.

### Tuned Selector - Digging Ditches.nki

Mapped from C-2 - G8.

### Tuned Selector - Lonesome Corral.nki

Mapped from C-2 - G8.

### Tuned Selector - Punch Pipes.nki

Mapped from C-2 - G8.

### Tuned Selector - String Bomb.nki

Mapped from C-2 - G8.

### Tuned Selector - Ernduzk.nki

Mapped from C-2 - G8.

## SUSTAINS

These presets each focus on a different style of sustaining tuned lead, pad, drone or atmosphere, with a large collection of available sounds in each category. You can also use the integrated Low and High layer selectors and Blend control to morph between any two sustains in each category. These presets also include optional polyphonic legato (see Page 10).

### Drone Rig.nki

This patch features a dozen different tonally focused lead and pad sustains. This preset is mapped from C-2 - G8.

### Rumbiences.nki

This patch features 16 complex and harmonically rich evolving and undulating ambient sound-scapes. This preset is mapped from C-2 - G8.

### Rustains.nki

This patch features 16 complex and harmonically rich evolving and undulating ambient sound-scapes. This preset is mapped from C-2 - G8.



## EFFECTS

These presets contain various single sound effects that were created using violin bows, friction and other types of sustaining resonance. They are ideal for sound design and dramatic scoring. Each sample is mapped to a single key, However, you can use the stepping control to shift the pitch up or down in semitone intervals. Use the Offset control to skip ahead to any point in the sound you wish.

You'll also find special Kontakt 5 versions of all of these presets in the "K5" sub-folder. The presets are designated with the suffix "SC K5", which stands for *Speed-Control Kontakt 5*. They use the newly improved Time Machine Pro engine, to allow smooth and realistic time stretching using the "Speed" control. They can not be used in Kontakt 4.

### Aluminum Scream.nki

This preset features a variety of sharp and harmonically complex aluminum drags, scrapes, bounces and bowed notes of various lengths. This preset is mapped from C1 – F#5.

### Lonesome Corral Gate Sfx.nki

This features a various corral gate opening, closing, rattling and vibrating sounds. This preset is mapped from C1 – A#5.

### Lonesome Corral Windsong.nki

Several prairie soundscapes with metal rattles and wind whistling through hollow fence poles. Mapped from C1 – G1.

### Rebar Zip.nki

Ribbed steel rebar being scraped, at various speeds, producing a zipping effect. Mapped from C1 – B2.

### Rust Drones Singles.nki

This preset includes all of the individual Drone Rig sustains, mapped over single keys, from C1 – G#4.

### Rustains Singles.nki

This preset includes all of the individual Rustain and Rumbience sustains, mapped over single keys, from C1 – C#5.

### The Ernduzk Bowed.nki

A variety of soft edge bowing on the Erndusk apparatus, using a viola bow. Mapped from C1 – C#4.

### The Ernduzk Drag Deep.nki

A collection of bassy harmonic metal sliding, scraping and dragging effects. Mapped from C#-1 – C#3.

### The Ernduzk Drag Long.nki

A collection of metal slide note effects, mapped from C - D#3.

### The Ernduzk Drag Medium.nki

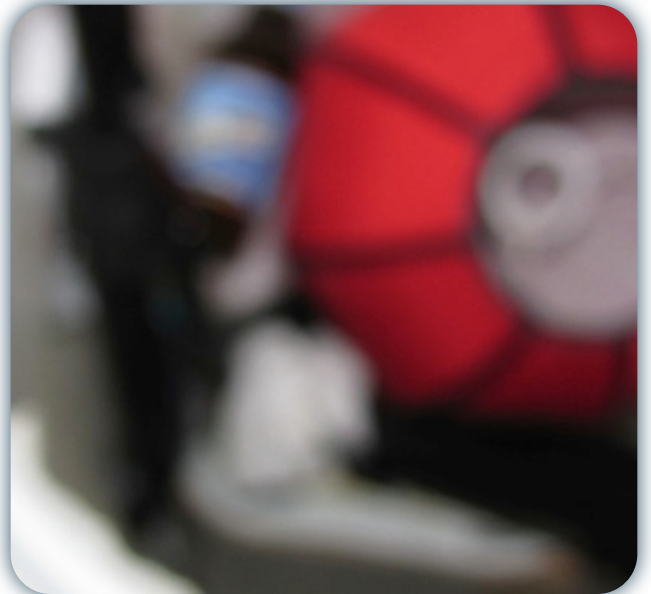
This preset features a collection of medium-length sustaining metal drag effects. This preset is mapped from C1 – B4.

### The Ernduzk Drag Mute.nki

A collection of metal slide/scrape effects of various lengths, with tightly damped resonance. Mapped from C1 – G3.

### The Ernduzk Drag Short.nki

A collection of short and fast metal slide/scrape effects, mapped from C1 – C#5.



## MASTER

The “Master” presets are large combination presets that allow direct access to the complete library and provide a great deal of flexibility and control. Please be aware that they can require a large amount of ram to load, can use much more CPU power and disk streaming resources and will often trigger a large number of voices to play at once. Due to the large number of samples and groups, these presets can often take a longer time to load.

### Rust 3 Master Ensemble.nki

This preset is a simple and easy to use master ensemble preset that features all of the percussive instruments in Rust 3, each mapped over a single key. This preset is mapped from C0 – C#7.

### Rust 3 Master Ensemble Lite.nki

This low-memory version of the Master Ensemble preset features a reduced number of round robin variations per note and limited offset control capabilities to allow a lower total ram requirement, for use on computers with limited ram resources or when the full-sized ensemble is not needed. This instrument uses the same standard controls as the regular Ensemble presets. Mapped from C0 – C#7.

### Rust 3 MegaMixer.nki

This preset is the master Mega Mixer, which allows you to create custom ensembles, with up to 10 instruments, each with independent tuning and mapping arrangements. Samples are loaded only as needed, so this preset is designed to be very memory efficient. The total key mapping for this preset is freely user defined. (See Page 11)

### Rust 3 Tuned Layer Builder A.nki

This is one of the Layer Builder presets, which feature 12 independent sample layers, each with customizable attack, offset, release, stepping, volume and velocity curve controls. The Swell knob is global for all layers to allow the entire instrument to be smoothly attenuated over time. This preset is mapped from C-2 – G8. (See Page 12)

### Rust 3 Tuned Layer Builder B.nki

This is an alternative Layer Builder instrument, with a different hand-picked selection of 12 unique sonic layers to customize and blend. Mapped from C-2 – G8. (See Page 12)

### Rust 3 Tuned Layer Builder C.nki

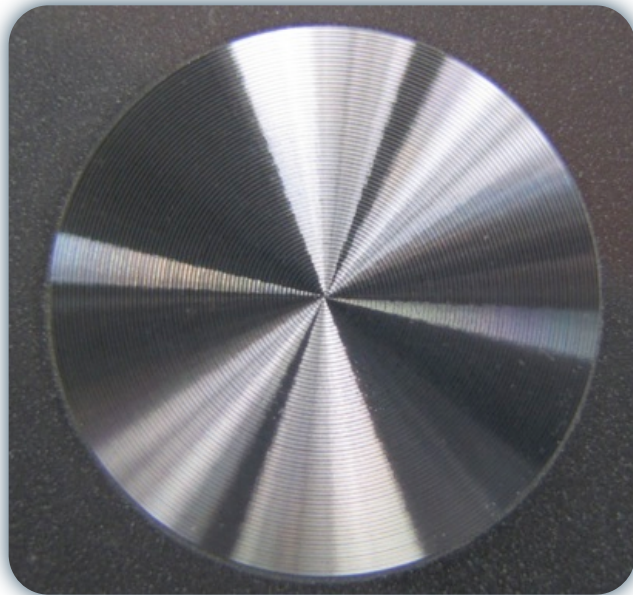
This is an alternative Layer Builder instrument, with a different hand-picked selection of 12 unique sonic layers to customize and blend. Mapped from C-2 – G8. (See Page 12)

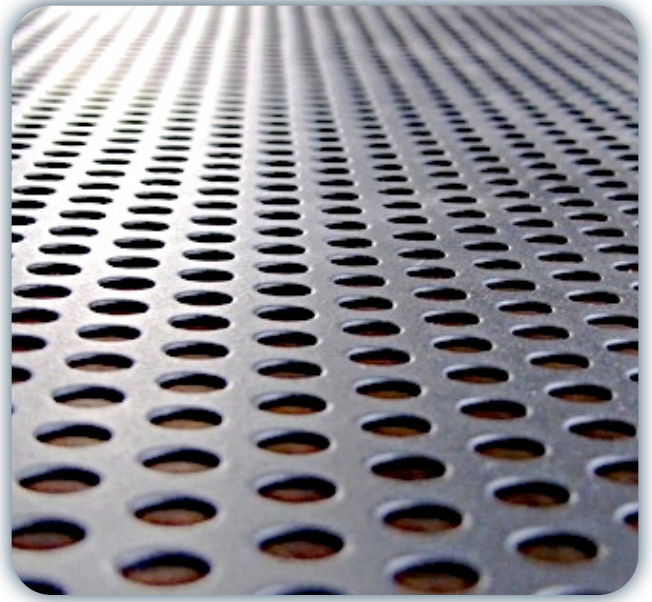
### Rust 3 Tuned Layer Builder D.nki

This is an alternative Layer Builder instrument, with a different hand-picked selection of 12 unique sonic layers to customize and blend. Mapped from C-2 – G8. (See Page 12)









# SOUNDIRON SOFTWARE LICENSING AGREEMENT

## LICENSE AGREEMENT

By installing the product you accept the following product license agreement:

## LICENSE GRANT

The license for this product is granted only to a single individual user. No unlicensed use is permitted. All sounds, samples, programming, images, scripting, designs and text contained in this product are copyrights of Soundiron, llc. This software is licensed, but not sold, to you by Soundiron, for commercial and non-commercial use in music, sound-effect creation, audio/video post-production, performance, broadcast or similar finished content-creation and production use. Individual license holders are permitted to install this library on multiple computers or other equipment only if they are the sole owner and only user of all equipment this software is installed or used on.

Soundiron allows you to use any of the sounds and samples in the library(s) you've purchased for the creation and production of commercial recordings, music, sound design, post production, or other content creation without paying any additional license fees or providing source attribution to Soundiron. This license expressly forbids any unauthorized inclusion of any raw or unmixed content contained within this product into any other commercial or non-commercial sample instrument, sound effect library, synthesizer sound bank, or loop or effect library of any kind, without our express prior written consent.

This license also forbids any unauthorized transfer, resale or any other form of re-distribution of this product, or its constituent sounds or programming, through any means, including but not limited to re-sampling, reverse engineering, de-compiling, remixing, processing, isolating, or embedding into software or hardware of any kind, except where included as part of a multimedia production, rendered musical recording, performance or finished work of sound design of at least 8 seconds or more in length. Licenses cannot be transferred or sold to another entity, without written consent of Soundiron, llc.

## RIGHTS

Soundiron retains full copyright privileges and complete ownership of all recorded sounds, instrument programming, documentation and musical performances included within this product. All past and future versions of this product, including any versions published or distributed by any other entity are fully bound and covered by this agreement.

## REFUNDS

Downloaded libraries can't be returned, so we can't provide refunds or exchanges. We may choose to do so at our own discretion, but please be aware that as soon as you've downloaded it, it can not be returned.

## RESPONSIBILITY

Using this product and any supplied software is at the licensee's own risk. Soundiron holds no responsibility for any direct or indirect loss arising from any form of use of this product.

## TERMS

This license agreement is effective from the moment the product is purchased or acquired by any means. The license will remain in full effect until termination by Soundiron, llc. The license is terminated if you break any of the terms or conditions of this agreement, or request a refund for any reason. Upon termination you agree to destroy all copies and contents of the product at your own expense. All past and future versions of this product, including those released through brands other than Soundiron, are covered under the terms of this agreement.

## VIOLATION

Soundiron reserves the right to prosecute piracy and defend this copyrighted creation to the fullest extent of civil and criminal law., but we keep our prices fair, our samples and programming accessible whenever possible and avoid cumbersome DRM, registration and activation procedures whenever possible to provide you as much creative freedom and the best user experience possible. If you enjoy our instruments and care about the very hard work that went into this labor of love, then we know you won't ever pirate or distribute this instrument unlawfully.

THANK YOU.

Thanks for purchasing the Soundiron Rust 3 metallic tuned & untuned percussion library. If you enjoy this creation, we hope you'll also consider checking out some of our other premium virtual instrument libraries. If you have any questions, troubles, concerns, comments, love-letters or hate mail, feel absolutely free to send it on over to us:

[info@soundiron.com](mailto:info@soundiron.com)

much obliged,

Chris, Gregg and Mike



[ SOUNDIRON ]