



VS18 DR

TANNOY®



Product Description

A direct radiating subwoofer designed to partner Tannoy V Series full range loudspeakers the VS18 DR is perfect for applications where increased headroom is required for high definition sound reinforcement at low and ultra low frequencies.

Extending the frequency response of the system to below 30Hz makes the VS18 DR ideal for effects in clubs, theatre and concert sound applications. This loudspeaker is capable of delivering deep and powerful bass at high sound pressure levels with extremely low distortion and power compression, while all the time maintaining a uniform frequency response throughout its dynamic range.

The high power handling VS18 DR consists of a high efficiency, rated at 102dB (1W = 2.83V for 8 Ohms), 458mm (18.00") drive unit with a 100mm (4.00") voice coil. This is mounted in an immensely strong cabinet, available in either black or white, which is constructed from 18mm (0.71") multi-ply birch hardwood. This heavy-duty construction ensures it is designed to survive the punishment that speaker systems are subjected to on the road and in club installations.

The VS18 DR comes complete with four recessed carrying handles for ease of transportation, 10mm flying points to provide a quick and secure flying system and a blanking plate for optional VTH pole mount. Tripods can therefore be eliminated by connecting V Series subwoofers and V Series Dual Concentric™ loudspeakers by ordering the Tannoy VTH top hat mounting hardware.

The versatility and impressive performance of this subwoofer make it ideal for applications such as live sound reinforcement, nightclub sub bass, theatre front of house and effects, movie theatres and cinemas, side fill in large scale music reinforcement, theme parks and leisure venues, sports and multi-use stadiums, audio visual, high quality public address and houses of worship.

Features

- 458mm (18.00") bass unit
- Deep, powerful bass performance
- Sturdy, versatile enclosure
- High power handling
- High efficiency and low distortion
- Rugged birch plywood construction
- Convenient aspect ratio
- 4 x integral carrying handles
- Integral flying points

Applications

- Live sound reinforcement
- Houses of worship
- Theatre front of house and effects
- Movie theatres and cinemas
- Side fill in large-scale music reinforcement
- Theme parks and leisure venues
- Sports and multi-use stadiums
- Audio visual
- High quality public address
- Nightclub sub-bass
- Extended bass for V Series full range loudspeakers

Tannoy United Kingdom
 Tannoy North America
 Tannoy Deutschland
 Tannoy France

T: 00 44 (0) 1236 420199
 T: 00 1 (519) 745 1158
 T: 00 49 (180) 1111 881
 T: 00 33 (0)1 7036 7473

E: enquiries@tannoy.com
 E: inquiries@tannoyna.com
 E: anfragen@tannoy.com
 E: ventes@tannoy.com

tannoy®.com



VS18 DR

TANNOY®

TECHNICAL SPECIFICATIONS

System	VS18DR	
System Type	Subwoofer - Direct Radiating	
Frequency Response (-3dB) ⁽¹⁾	29Hz - 1kHz	
Frequency Response (-10dB) ⁽¹⁾	24Hz - 1.5kHz	
System Sensitivity (1W @1m) ⁽²⁾	102dB (1W = 2.83V for 8 Ohms)	
Driver Complement	1 x 458mm (18.00") bass driver	
Recommended Crossover	70Hz - 300Hz, 24dB/octave Recommended High-pass filter 25Hz, 24dB/octave	
Rated Maximum SPL ⁽²⁾		
Average	130dB	
Peak	136dB	
Power Handling		
Average	600W	
Programme	1200W	
Peak	2400W	
Recommended Amplifier Power	600 - 1200 Watt @ 8 Ohms	
Nominal Impedance	8 Ohms	
Distortion		
10% Full Power (17.9V)	2nd Harmonic	3rd Harmonic
40Hz	1.22%	1.34%
100Hz	3.48%	1.98%
1% Full Power (4.0V)	2nd Harmonic	3rd Harmonic
40Hz	0.41%	0.41%
100Hz	0.88%	1.03%

Construction	
Enclosure	18mm (0.71") birch plywood, internally braced.
Finish	Textured black or white paint, with custom colours on request
Connectors	2 x Speakon NL4MPR IN/OUT
Fittings	4 x Recessed carrying handles 1 x Blanking plate allows installation of a 35mm pole-mounting socket 8 x M10 flying inserts 2 x Pullback points 4 x Rubber feet
Dimensions	710 x 652.40 x 555mm (H x W x D) 27.95 x 25.68 x 21.85" (H x W x D)
Weight	50kg (110.40 lbs)

Notes:

(1) Average over stated bandwidth. Measured at 1 metre on axis.

(2) Unweighted pink noise input, measured at 1 metre in an anechoic chamber

A full range of measurements, performance data, CLF and Ease™ Data can be downloaded from www.tannoy.com

Full independent verification of published specifications carried out by NWA Labs, California can also be obtained from the downloads section of www.tannoy.com

Tannoy operates a policy of continuous research and development. The introduction of new materials or manufacturing methods will always equal or exceed the published specifications, which Tannoy reserves the right to alter without prior notice. Please verify the latest specifications when dealing with critical applications.

Ordering Information

PART NUMBER	MODEL NAME	COLOUR	PACKED QUANTITY
8001 3060	VS18 DR	Black	1
8001 3060	VS18 DR	White	1

Tannoy United Kingdom
Tannoy North America
Tannoy Deutschland
Tannoy France

T: 00 44 (0) 1236 420199
T: 00 1 (519) 745 1158
T: 00 49 (180) 1111 881
T: 00 33 (0)1 7036 7473

E: enquiries@tannoy.com
E: inquiries@tannoyna.com
E: anfragen@tannoy.com
E: ventes@tannoy.com

tannoy®.com

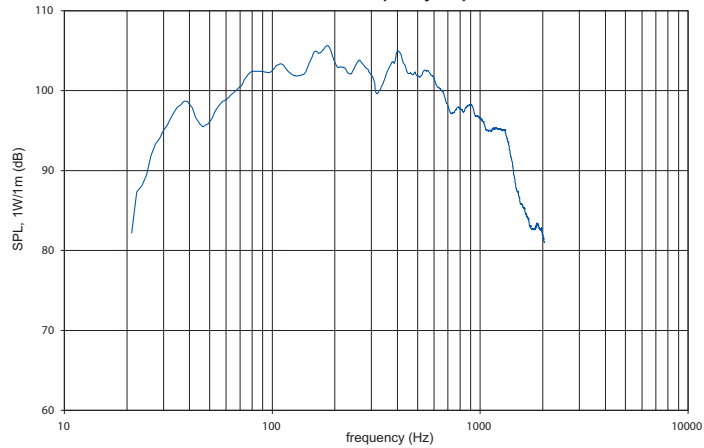


VS18 DR

TANNOY®

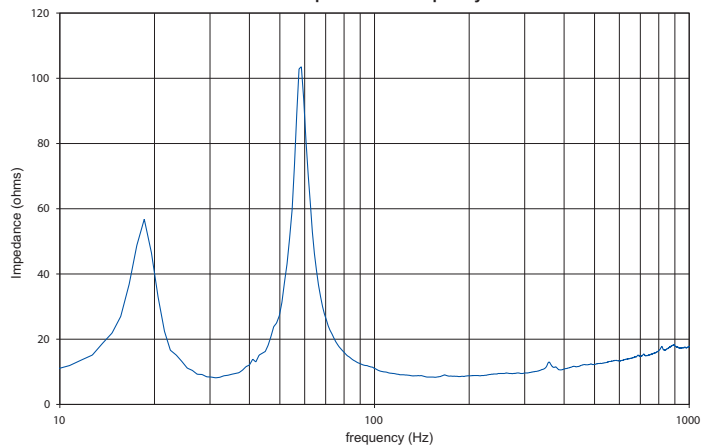
PERFORMANCE MEASUREMENTS

1m on-axis frequency response



FREQUENCY RESPONSE

Impedance vs frequency



IMPEDANCE

Tannoy United Kingdom
 Tannoy North America
 Tannoy Deutschland
 Tannoy France

T: 00 44 (0) 1236 420199
 T: 00 1 (519) 745 1158
 T: 00 49 (180) 1111 881
 T: 00 33 (0)1 7036 7473

E: enquiries@tannoy.com
 E: inquiries@tannoyna.com
 E: anfragen@tannoy.com
 E: ventes@tannoy.com

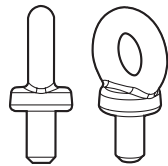
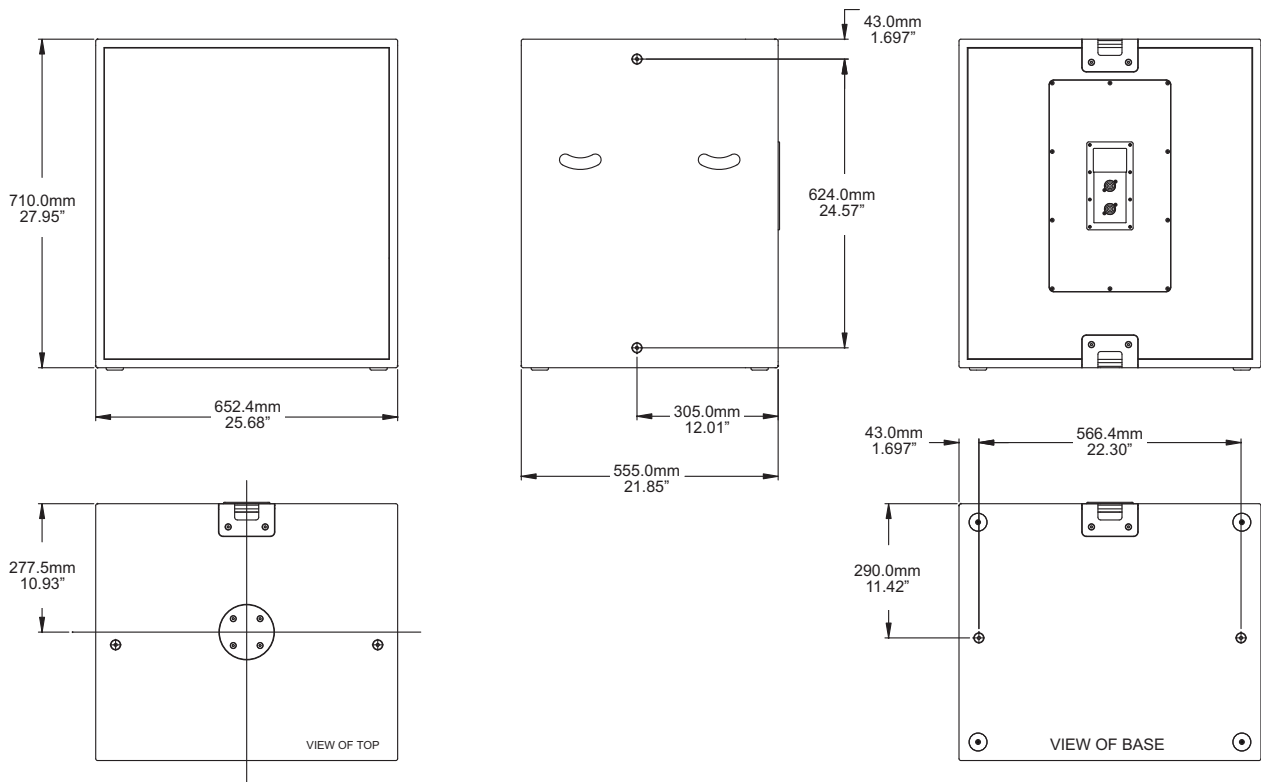
tannoy®.com



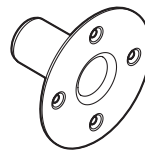
VS18 DR

TANNOY®

DIMENSIONAL SKETCHES & HARDWARE



VEB



VTH

Ordering Information

PART NUMBER	MODEL NAME	COLOUR	PACKED QUANTITY
8001 2820	VEB	-	1
8001 2860	VTH	Black	1
8001 2870	VTH	White	1

Tannoy United Kingdom
 Tannoy North America
 Tannoy Deutschland
 Tannoy France

T: 00 44 (0) 1236 420199
 T: 00 1 (519) 745 1158
 T: 00 49 (180) 1111 881
 T: 00 33 (0)1 7036 7473

E: enquiries@tannoy.com
 E: inquiries@tannoyna.com
 E: anfragen@tannoy.com
 E: ventes@tannoy.com

tannoy®.com



Architectural specifications

The bass loudspeaker shall consist of a 458mm (18.00") low frequency transducer mounted within a vented direct radiating enclosure.

Performance of the loudspeaker, without any electronic control shall meet or exceed the following criteria: Frequency response measured at 1 metre on axis with swept sine wave shall be 29Hz – 1kHz (-3dB). Sensitivity shall be at least 102dB (half space) for 2.83 Volts @ 1 metre and shall be capable of producing a peak output level of 136dB (half space) on axis at 1 metre.

The system shall have a nominal impedance of 8 Ohms and maximum power handling shall be 1200 Watts (programme). The enclosure shall be an optimally tuned (202 litre) vented enclosure of birch plywood construction finished in a wear resistant textured black paint.

Input connectors shall be two Neutrik™ NL4MPR Speakon and the enclosure shall be fitted with four integral carrying handles, a blanking plate allowing the installation of a 35mm pole mount, 2 x pull back points and 8 x M10 flying inserts. The front of the loudspeaker shall be protected with a foam covered, perforated steel grille.

The enclosure shall not exceed the following dimensions: 710 x 652.4 x 555mm or 27.95 "x 25.68" x 21.85" (H x W x D)

The bass loudspeaker shall be the Tannoy... VS18 DR.



NOTES