

Owner's Manual

Guitar Amplifier



KATANA-AIR EX



KATANA-AIR EX
5 inch speaker x 2



Transmitter

English

日本語

Deutsch

Français

Italiano

Español

Português

Nederlands

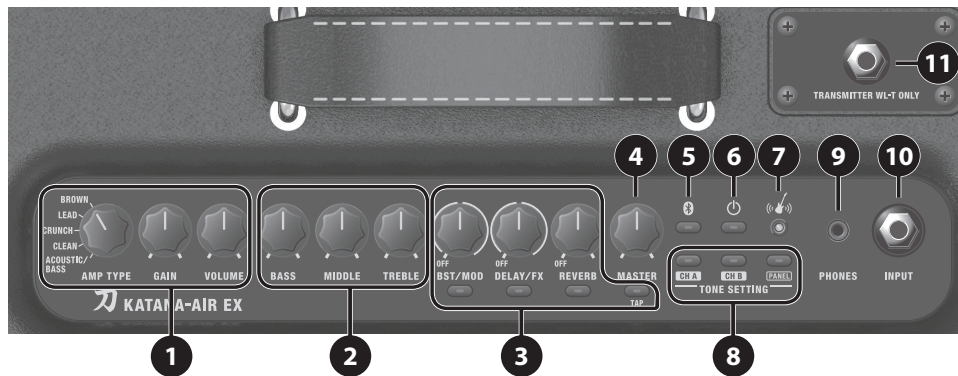


Before using this unit, carefully read "USING THE UNIT SAFELY" and "IMPORTANT NOTES" (the leaflet "USING THE UNIT SAFELY" and the Owner's Manual (p. 11)). After reading, keep the document(s) where it will be available for immediate reference.

© 2023 Roland Corporation

Panel Descriptions

Top Panel



1 AMPLIFIER

[AMP TYPE] knob

Selects the amp type. All provided amp types are original.

| Type | Explanation |
|---------------|---|
| BROWN | A lead sound with an edge inherited from the BOSS WAZA brown sound. |
| LEAD | Different gain settings allow this sound to cover a wide range from crunch to high-gain. |
| CRUNCH | A fat crunch sound that faithfully responds to the nuances of your picking. |
| CLEAN | A clean and natural sound. In conjunction with BST (BOOSTER), it can be used for solo or lead. |
| ACOUSTIC/BASS | A dedicated acoustic guitar amp that supports connection of an acoustic guitar and a bass guitar. |

[GAIN] knob

Adjusts the gain (amount of distortion).

[VOLUME] knob

Adjusts the volume.

2 EQUALIZER

[BASS] knob

Adjusts the sound level of the low-frequency range.

[MIDDLE] knob

Adjusts the sound level of middle-frequency range.

[TREBLE] knob

Adjusts the sound level of the high-frequency range.

3 EFFECTS

Here you can make settings for the built-in effects. For details on the effect types and settings for each knob, refer to "Using the Effects" (p. 6).

[BST/MOD] button/knob

Controls distortion-type effects and modulation effects.

[DELAY/FX] button/knob

Controls effects such as delay, wah, tremolo, and octave.

[TAP] button

Sets the delay time. When you press this button two or more times, the delay time is set to the interval between presses.

[REVERB] button/knob

Controls the reverb.

4 [MASTER] knob

Adjusts the overall volume.

5 [Bluetooth] button/indicator

Registers a **Bluetooth**® device (p. 8). And indicates the Bluetooth connection status.

| Indicator | Explanation |
|-----------|---------------|
| Lit | Connected |
| Blinking | Pairing mode |
| Unlit | Not connected |

6 [⏻] (POWER) button/indicator

Turn the power on/off. This also indicates the state of the power supply.

| Indicator | Explanation |
|------------|--|
| | On |
| Lit green | To enter standby mode, long-press the [⏻] button. |
| | To turn the unit off, enter standby mode and then long-press the [⏻] button. |
| Lit orange | Standby mode |
| | To turn the unit on, press the [⏻] button. To turn the unit off, long-press the [⏻] button. |
| Unlit | Off |

MEMO

When the power is on, and a certain length of time elapses since the unit was last played or operated, the unit automatically enters standby mode. You can use a dedicated app (subsequently referred to as BOSS TONE STUDIO) to change the time after which the unit enters standby mode (p. 6).

In standby mode, the power automatically turns on if the transmitter plugged into the guitar detects vibration (p. 5).

7 (Guitar Wireless) indicator

Indicates the status of the connection with the transmitter.

| Indicator | Explanation |
|-----------|--|
| Lit white | Connected with the transmitter When you play the guitar, the sound is heard from the speaker. |
| Unlit | Not connected with the transmitter Alternatively, the guitar is connected to the INPUT jack |

* If the guitar is connected to the INPUT jack, the sound of the INPUT jack takes priority.

8 TONE SETTING**[CH A], [CH B] buttons**

Each of these buttons stores three sets of settings for all top panel knobs (except the [MASTER] knob) and buttons (p. 6). Each time you press a button, the color alternates between green, red, and orange, and the settings change accordingly. If you hold down a button for one second, the settings of the sound that you're currently hearing are overwritten onto the previously-stored settings.

* You can make the settings back to the factory state by turning the power on while holding down the [PANEL] button (p. 9).

[PANEL] button

Makes the unit sound using the current settings of the panel knobs.

9 PHONES jack

Connect headphones here. You can obtain powerful guitar sounds just as if you were playing through the speaker. By using BOSS TONE STUDIO you can obtain the sound of different micing (LINE OUT AIR FEEL, p. 6). To adjust the volume, use the [VOLUME] knob along with the [MASTER] knob.

* If a plug is inserted in this jack, no sound will be output from the KATANA-AIR EX's own speaker. This is convenient if you don't want loud sound to be produced from the speaker, such as when you're practicing at night.

10 INPUT jack

Connect your electric guitar, bass guitar, or acoustic guitar.

* To prevent malfunction and equipment failure, always turn down the volume, and turn off all the units before making any connections.

11 TRANSMITTER IN jack

You can insert the included transmitter (p. 4) here to charge it.

The first time that you use the unit, power-on the KATANA-AIR EX and insert the transmitter here to charge it.

NOTE

- Do not insert anything other than a transmitter made by BOSS. If you connect headphones, high-volume sound might be emitted, or the headphones might be damaged.

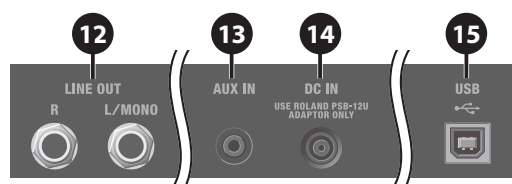
- The transmitter is equipped with a lithium-ion battery.

- Even if you do not use the transmitter for an extended period of time, you should charge it once every three months to prevent the internal lithium-ion battery from degrading.

- Ambient temperature range during charging: 5–35°C

However, in order to take full advantage of the rechargeable lithium-ion battery's performance, we recommend that you charge it in a temperature range of 10–30°C.

If the temperature is outside the appropriate range, a charging error might occur (the BATTERY indicator blinks red) and the battery fail to charge (p. 10).

Rear Panel**12 LINE OUT (R, L/MONO) jack**

You can connect an audio interface or recorder to record your performance, or output the sound to a mixer.

13 AUX IN jack

Here you can connect a mobile device or electronic musical instrument, and listen to it while you play your guitar.

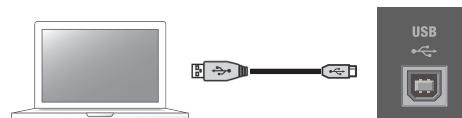
14 DC IN jack

Connect the included AC adaptor (p. 5).

* Use only the AC adaptor that was included with the unit.

15 USB (↔) port

You can use a commercially available USB 2.0 cable to record the sound of the KATANA-AIR EX into your computer.



You must install the USB driver when connecting the unit to your computer.

Download the USB driver from the Roland website. For details, refer to Readme.htm which is included in the download.

<https://www.boss.info/support/>

* Do not use a USB cable that is designed only for charging a device. Charge-only cables cannot transmit data.

Transmitter



The transmitter has the following functions.

| Function | Explanation |
|---|--|
| When inserted in the guitar | |
| Wireless | When you play the guitar, the sound is heard wirelessly from the KATANA-AIR EX. |
| Wake up on | If the power is on and no vibrations are detected for a certain length of time (three minutes), the unit automatically enters standby mode. In standby mode, if the transmitter plugged into the guitar detects vibration, the power turns on automatically (p. 5). |
| When inserted in the TRANSMITTER IN jack | |
| AUTO BATTERY CHARGE | The transmitter is automatically charged. |
| AUTO WIRELESS CONNECTION | To ensure the most stable connection between the KATANA-AIR EX and the transmitter, nearby wireless usage in the 2.4 GHz band is detected for ten seconds, and adjustments are made automatically. |

By inserting the transmitter in the TRANSMITTER IN jack before plugging it into your guitar, you can charge the transmitter and also obtain a stable wireless connection.

16 DC IN 5 V port (USB Micro-B)

You can use a commercially available USB cable to charge the transmitter instead of inserting the transmitter in the KATANA-AIR EX's TRANSMITTER IN jack.

17 Input plug/Power button

When you insert the transmitter into your guitar, the transmitter automatically powers-on.

NOTE

If you insert the transmitter into a guitar whose electrical specifications differ from those of a standard guitar, the transmitter might not power-on.

For details, refer to the BOSS website's KATANA-AIR EX support page.

18 BATTERY indicator

Indicates the status of the transmitter's battery and the wireless connection status.

| Status | Indicator | Explanation |
|---|----------------------------|---|
| When inserted in the guitar | | |
| Remaining battery amount | Lit green | Sufficient capacity remains. |
| | Lit orange | Capacity is becoming low. |
| | Lit red | Little capacity remains. Charge the battery. |
| When inserted in the TRANSMITTER IN jack | | |
| AUTO WIRELESS CONNECTION | Blinking orange | To ensure the most stable connection between the KATANA-AIR EX and the transmitter, nearby wireless usage in the 2.4 GHz band is detected for ten seconds, and adjustments are made automatically. |
| | AUTO BATTERY CHARGE | Lit orange |
| Unlit | | Charging is completed. * We recommend that you disconnect the transmitter after charging is completed. If you leave it connected, a small amount of power is used from the battery, and the indicator blinks green once every eight seconds. * If you have not used the transmitter for a long time, one charge might not be sufficient. Disconnect and reconnect the transmitter to complete charging. |
| Lit green | | When five hours have passed since charging started, charging automatically stops in order to protect the lithium-ion battery, even if charging was not completed. To charge completely, disconnect and reconnect the transmitter. |
| Overall | Rapid blinking red | A charging error occurred (p. 10). |

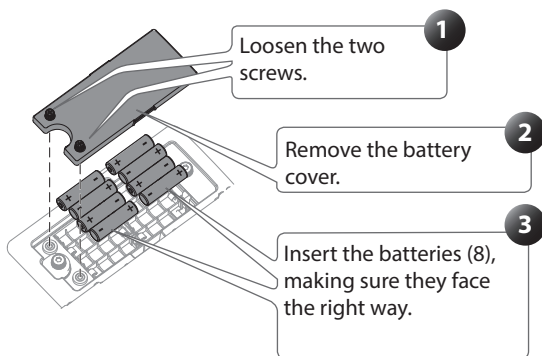
From Preparations to Performance

Battery Operation

This KATANA-AIR EX can be used with alkaline batteries or Ni-MH batteries. The operating time will depend on the characteristics of the batteries.

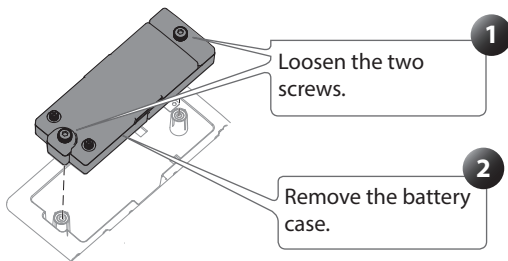
* If you handle batteries improperly, you risk explosion and fluid leakage. Make sure that you carefully observe all of the items related to batteries that are listed in "USING THE UNIT SAFELY" and "IMPORTANT NOTES" (the leaflet "USING THE UNIT SAFELY" and the Owner's Manual (p. 11)).

Installing Batteries



Removing the Battery Case

Although you can replace the batteries while the battery case is still attached, it's easier to replace the batteries if you remove the battery case.



You can also use the Roland BTY-NIMH/A battery pack (sold separately).

This frees you from the need to use AA batteries, as you can simply attach the battery pack to power the KATANA-AIR EX.

AC Adaptor Operation

Use only the AC adaptor included with the KATANA-AIR EX.

Use of other AC adaptors may damage the amp or result in other problems.

Turning the Power On/Off

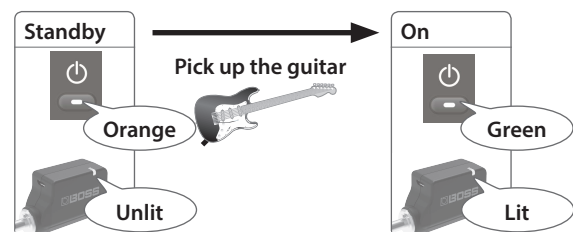
* Before turning the unit on/off, always be sure to turn the volume down. Even with the volume turned down, you might hear some sound when switching the unit on/off. However, this is normal and does not indicate a malfunction.

1. Turn the [MASTER] knob and the [VOLUME] knob of the KATANA-AIR EX to "far left".
2. Minimize the volume of the devices connected to the KATANA-AIR EX.
3. Turn on the power of the devices that are connected to the INPUT jack and AUX IN jack of the KATANA-AIR EX.
4. Turn on the power of the KATANA-AIR EX.
5. Turn on the power of the device that is connected to the LINE OUT (R, L/MONO) jack.
6. Insert the transmitter into the TRANSMITTER IN jack.
The wireless status is detected automatically.
7. When the BATTERY indicator stops blinking orange, plug the transmitter into your guitar.

When turning the power off, turn the volume to 0 for all devices that are connected to the KATANA-AIR EX and then turn off their power; finally, turn off the power of the KATANA-AIR EX.

Automatically Turning On from Standby Mode (Wake Up On)

When the KATANA-AIR EX and the transmitter are both in standby mode (p. 2, p. 4), and the transmitter detects vibration (for example, because you picked up the guitar), both will automatically power-on (wake up on).



Using the Effects

The KATANA-AIR EX lets you switch between various types of effect by using the buttons and knobs. You can use three types of effect simultaneously.



Effects assigned to each knob when the unit is shipped

| Knob | Color of the button | BST (BOOSTER) | MOD |
|------|---------------------|---------------|---------|
| | Green | BLUES DRIVE | CHORUS |
| | Red | OVERDRIVE | FLANGER |
| | Orange | DISTORTION | PHASER |

| Knob | Color of the button | DELAY | FX |
|------|---------------------|---------------|---------|
| | Green | DIGITAL DELAY | TREMOLO |
| | Red | ANALOG DELAY | T.WAH |
| | Orange | TAPE ECHO | OCTAVE |

| Knob | Color of the button | REVERB |
|------|---------------------|---------------|
| | Green | PLATE REVERB |
| | Red | SPRING REVERB |
| | Orange | HALL REVERB |

This table shows the effects when the [PANEL] button is on.

Use BOSS TONE STUDIO to see the effects that are assigned when the [CH A] or [CH B] buttons are pressed.

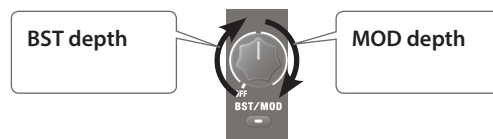
1. Press the [BST/MOD], [DELAY/FX], or [REVERB] button to select the effect that you want to use.

Each time you press the button, its color changes.

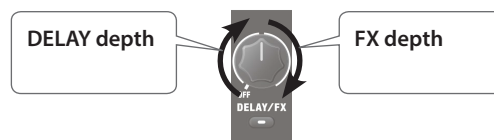


2. Turn the knob to adjust the depth of the effect.

* Either BST or MOD is selected depending on the position of the knob.



* Either DELAY or FX is selected depending on the position of the knob.



Controlling the KATANA-AIR EX from a smartphone or tablet

By using BOSS TONE STUDIO, you can edit the effects of the KATANA-AIR EX from a mobile device such as a smartphone or tablet (subsequently referred to as "mobile device").

You can download dedicated effects from BOSS TONE CENTRAL (<http://bosstonecentral.com/>).

You can also back up the effects and internal settings, or restore the settings that you previously backed-up.

Apps for iOS and Android are available. You can install these on your mobile device from the App Store or Google Play.

About the Factory-Set Effects

| Effect | Explanation |
|----------------------|--|
| BST | |
| BLUES DRIVE | A crunch sound like the BOSS BD-2, creating distortion that faithfully reproduces the nuances of your picking. |
| OVERDRIVE | An overdrive sound like the BOSS OD-1, producing sweet and mild distortion. |
| DISTORTION | A standard and highly usable distortion sound. |
| MOD | |
| CHORUS | An effect that adds a slightly modulated sound to the direct signal, creating beautiful spaciousness and depth. |
| FLANGER | Produces a flanging effect which applies modulation that is reminiscent of a jet airplane. |
| PHASER | Produces a phasing effect which applies a sense of rotation to the sound by adding a slightly phase-shifted sound to the direct signal. |
| DELAY | |
| DIGITAL DELAY | A clear digital delay sound. |
| ANALOG DELAY | A mild analog delay sound. |
| TAPE ECHO | A sound with the distinctive modulation of a tape echo unit. |
| FX | |
| TREMOLO | An effect that cyclically modulates the volume. |
| T.WAH | A wah effect that modulates a filter according to the volume of the guitar, producing a wah effect. |
| OCTAVE | Adds a sound one octave lower than the input, generating a sense of low-frequency solidity. |
| REVERB | |
| PLATE REVERB | Simulates a plate reverb (a reverb unit that uses the vibration of a metal plate), providing a metallic resonance with an extended high-frequency range. |
| SPRING REVERB | Simulates the spring reverb unit built into some guitar amps. |
| HALL REVERB | Simulates the reverberation of a concert hall. |

English

日本語

Deutsch

Français

Italiano

Español

Português

Nederlands

Listening to Sound via Wireless Connection with a Mobile Device

Bluetooth® Audio

By wirelessly connecting the KATANA-AIR EX to a mobile device that's equipped with Bluetooth audio functionality, you can do the following things.

- You can use the speakers of this unit to listen to music or music videos played on your mobile device.

Registering a Mobile Device (Pairing)

"Pairing" is the procedure by which the mobile device that you want to use is registered on this unit (the two devices recognize each other).

Make settings so that music data saved on the mobile device can be played wirelessly via this unit.

MEMO

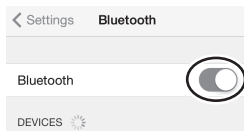
The following explanation of the procedure is only one example. For details, refer to the owner's manual of your mobile device.

1. Turn on the power of the KATANA-AIR EX.
2. Place the mobile device that you want to connect nearby the KATANA-AIR EX.
3. Long-press the KATANA-AIR EX's [Bluetooth] button.

The Bluetooth indicator blinks, and the sound is muted. Sound that is input from the AUX IN jack is also muted.

4. Turn on the Bluetooth function of the mobile device.

* The explanation here uses the iPhone as an example. For details, refer to the owner's manual of your mobile device.



5. Tap "KATANA-AIR Audio" that is shown in the Bluetooth device screen of your mobile device.

This unit is paired with the mobile device. When pairing succeeds, "KATANA-AIR Audio" is added to the list of "Paired Devices" on your mobile device.

Connecting an Already-Paired Mobile Device

1. With the KATANA-AIR EX's [Bluetooth] indicator off, press the [Bluetooth] button.

The Bluetooth indicator blinks, and the sound is muted. Sound that is input from the AUX IN jack is also muted.

2. Turn on the Bluetooth function of the mobile device.

MEMO

- If you were unable to establish a connection using the procedure above, tap "KATANA-AIR Audio" that is displayed in the Bluetooth device screen of the mobile device.
- To disconnect, press the KATANA-AIR EX's [Bluetooth] button to make the Bluetooth indicator go dark, or turn off the mobile device's Bluetooth function.

Adjusting the Volume

1. Adjust the volume on the mobile device.

Adjust the volume of Bluetooth audio.

2. Turn the KATANA-AIR EX's [MASTER] knob.

The [MASTER] knob adjusts the volume of both the Bluetooth audio and the guitar. When you turn the [MASTER] knob, the volume of the Bluetooth audio and the volume of the guitar will both change.

Controlling the KATANA-AIR EX from a Mobile Device App

You can use the BOSS TONE STUDIO app to edit sounds and manage the sound library.

For details on BOSS TONE STUDIO, refer to the BOSS website.

<https://www.boss.info/>

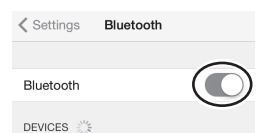
Connecting to the App

Here's how to make settings in order to use an app on your mobile device.

1. Turn on the power of the KATANA-AIR EX.
2. Place the mobile device that you want to connect nearby this unit.

3. Turn on the Bluetooth function of the mobile device.

* The explanation here uses the iPhone as an example. For details, refer to the owner's manual of your mobile device.



4. Start the app "BOSS TONE STUDIO" on your mobile device.

5. From your mobile device app "BOSS TONE STUDIO" initiate pairing.

The KATANA-AIR EX is paired with the app. When pairing is completed, the app indicates "Connected to KATANA-AIR".

NOTE

Do not tap the "KATANA-AIR MIDI" that is shown in the Bluetooth settings of the mobile device.

Disabling the Bluetooth Functionality

If you want to disconnect the Bluetooth connection between the KATANA-AIR EX and your mobile device, disable the Bluetooth functionality.

1. Press the KATANA-AIR EX's [Bluetooth] button.

The Bluetooth indicator goes dark.

Restoring the Factory Settings

Here's how the settings stored in the KATANA-AIR EX can be returned to their factory-set condition (factory reset).

1. While holding down the [PANEL] button, turn the power on.

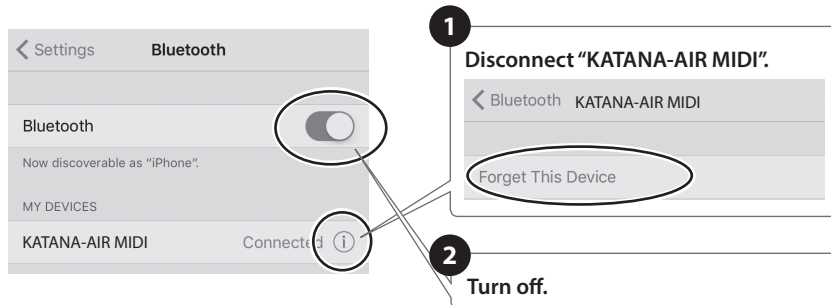
Each of the EFFECTS buttons continues blinking consecutively from the left. When the blinking stops, all of the KATANA-AIR EX's settings return to the factory-set state.



* It takes approximately 30 seconds for the factory reset to be completed. Don't turn off the power while the factory reset is in progress.

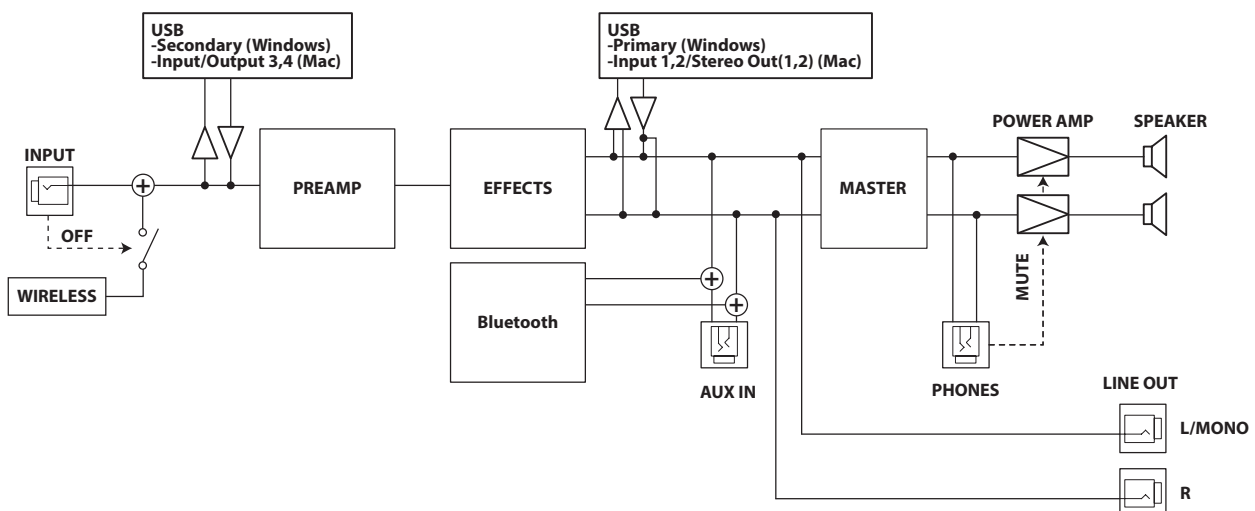
Note when using an already-paired iOS device

After executing a factory reset, you'll need to perform the following operations.



For details, refer to the owner's manual of your iOS device.

Block Diagram



Troubleshooting

| Problem | Items to check/Action | Page |
|---|--|------|
| No sound from the KATANA-AIR EX when you play the guitar in which the transmitter is inserted | Could a guitar be connected to the INPUT jack? The guitar connected to the INPUT jack takes priority. | - |
| | Is the KATANA-AIR EX too far away from the guitar? Alternatively, are there obstructions between them? Decrease the distance between the KATANA-AIR EX and the guitar. | - |
| The sound of a different guitar is heard | Could there be a different KATANA-AIR EX unit or transmitter nearby? Temporarily plug the transmitter into the TRANSMITTER IN jack, and wait for the BATTERY indicator to stop blinking orange before you use it. | p. 4 |
| Even though you recharged the transmitter, the BATTERY indicator immediately turns red | Could the KATANA-AIR EX be operating only on batteries? The batteries installed in the KATANA-AIR EX have run low. Either replace the batteries or connect the AC adaptor. | p. 5 |
| The transmitter's BATTERY indicator blinks red | A charging error occurred. <ul style="list-style-type: none"> If the transmitter's internal temperature rises, charging might pause. This occurs in order to protect the lithium-ion battery. When the internal temperature falls, the BATTERY indicator changes to be lit orange, and charging resumes. Could the ambient temperature be above 35°C? Charging might stop for a while in order to protect the lithium-ion battery. Use the unit in the recommended ambient temperature range of 10°C–30°C. If the indicator continues blinking red even though you are charging in the recommended temperature range (10°C–30°C) Contact your dealer or a Roland customer service center. | - |

Problems with Bluetooth functionality

| Problem | Items to check/Action | Page |
|--|--|---|
| This unit does not appear in the Bluetooth device list of your mobile device | Could the Bluetooth function be turned "Off"? The Bluetooth function is enabled when you turn the KATANA-AIR EX's power on again. Bluetooth Audio function: A device named "KATANA-AIR Audio" appears. Connected to an app: A device named "KATANA-AIR MIDI" appears. You can check this from the settings inside an app such as BOSS TONE STUDIO. | p. 8 |
| Can't connect to Bluetooth audio | If this unit is visible as a device in the mobile device's Bluetooth settings | Delete the device's registration, turn the Bluetooth Audio function off and then on again, and establish pairing once again. |
| | If this unit is not visible as a device | Turn the mobile device's Bluetooth function off and then on again, and initiate pairing from this unit to re-establish pairing. |
| Can't connect to an app | After unpairing the "KATANA-AIR MIDI" that is registered on the mobile device, turn the mobile device's Bluetooth function off and then on again, and reconnect it. | |
| In your mobile device's Bluetooth setting screen, you tap "KATANA-AIR MIDI" but can't connect to the app | Make the connection from the app's settings, not from your mobile device's Bluetooth settings. | |
| You pressed the KATANA-AIR EX's [Bluetooth] button, but can't connect to the app | Make the connection from the app's settings. | - |
| Can't connect a paired mobile device | If the connection breaks immediately after it is established, turning the Bluetooth device's Bluetooth switch off and then on again may allow connection to occur. | |

MEMO

If checking these points does not solve the problem, please refer to the BOSS support website.

<https://www.boss.info/support/>

USING THE UNIT SAFELY

WARNING

Make sure that the power cord is grounded

Connect mains plug of this model to a mains socket outlet with a protective earthing connection.



Use only the supplied AC adaptor and the correct voltage

Be sure to use only the AC adaptor supplied with the unit. Also, make sure the line voltage at the installation matches the input voltage specified on the AC adaptor's body. Other AC adaptors may use a different polarity, or be designed for a different voltage, so their use could result in damage, malfunction, or electric shock.



Use only the supplied power cord

Use only the attached power cord. Also, the supplied power cord must not be used with any other device.



WARNING

Handling units that contain a lithium-ion battery

Do not use, recharge, or leave the unit in a location that is subject to high temperature

- In direct sunlight
- Near a fire
- Inside a vehicle on a hot day, etc.



Do not leave the unit recharging for an extended time

When recharging is completed, disconnect the power supply used for recharging; do not leave the power supply connected for an extended time.

CAUTION

Do not remove the speaker grille and speaker

Do not remove the speaker grille and speaker by any means. Speaker is not user replaceable. Shock hazardous voltages and currents are present inside the enclosure.



Precautions if liquid leaks from the product

If liquid leaks from the internal lithium-ion battery, observe the following precautions.

- Do not touch the liquid with your bare hands.
- If any of the leaking fluid gets into your eyes, the loss of vision may result. Do not rub your eyes; use clean water to flush them thoroughly. Then, promptly see a doctor.
- Burning of the skin or dermatitis may result if fluid has gotten onto your skin or clothing. Use clean water to flush affected areas thoroughly; then, promptly see a doctor.



IMPORTANT NOTES

Power Supply

- Place the AC adaptor so that the side with text is downward.

Power Supply: Use of Batteries

- Sounds may distort easily or may cut off when played at high volume as the battery power begins to fade, but this is normal and does not indicate a malfunction. In such instances, either replace the batteries or use the AC adaptor included with the unit.
- If operating this unit on batteries, please use alkaline batteries or Ni-MH batteries.
- This product is equipped with a lithium-ion battery.
- Even if you do not use this product for an extended period of time, you should charge it once every three months to prevent the internal lithium-ion battery from degrading.
- Ambient temperature range during charging
5–35°C
However, in order to take full advantage of the rechargeable lithium-ion battery's performance, we recommend that you charge it in a temperature range of 10–30°C.
- If you need to dispose of this product, do not simply discard it with your household waste; if the internal lithium-ion battery becomes unusable, you should dispose of it in compliance with local regulations.

- This unit contains a lithium-ion battery. When disposing of this unit, please observe the regulations applicable to your locality. Never remove the lithium-ion battery. Doing so may cause bursting or fire.

Placement

- Depending on the material and temperature of the surface on which you place the unit, its rubber feet may discolor or mar the surface.

Repairs and Data

- Before sending the unit away for repairs, be sure to make a backup of the data stored within it; or you may prefer to write down the needed information. Although we will do our utmost to preserve the data stored in your unit when we carry out repairs, in some cases, such as when the memory section is physically damaged, restoration of the stored content may be impossible. Roland assumes no liability concerning the restoration of any stored content that has been lost.

Additional Precautions

- Any data stored within the unit can be lost as the result of equipment failure, incorrect operation, etc. To protect yourself against the irretrievable loss of data, be sure to make a backup of the data stored within it; or you may prefer to write down the needed information.
- Roland assumes no liability concerning the restoration of any stored content that has been lost.
- Do not use connection cables that contain a built-in resistor.

Caution Regarding Radio Frequency Emissions

- The following actions may subject you to penalty of law.
 - Disassembling or modifying this device.
 - Removing the certification label affixed to the back of this device.
 - Using this device in a country other than where it was purchased
- Do not use this product closer than 22 cm (8–11/16 inches) from where a cardiac pacemaker is implanted. Doing so may affect the operation of the cardiac pacemaker.

Intellectual Property Right

- ASIO is a trademark and software of Steinberg Media Technologies GmbH.
- This product contains eParts integrated software platform of eSOL Co.,Ltd. eParts is a trademark of eSOL Co., Ltd. in Japan.
- The **Bluetooth**® word mark and logos are registered trademarks owned by Bluetooth SIG, Inc. and any use of such marks by Roland is under license.
- Roland, BOSS are either registered trademarks or trademarks of Roland Corporation in the United States and/or other countries.
- Company names and product names appearing in this document are registered trademarks or trademarks of their respective owners.

Main Specifications

| | |
|-----------------------------|---|
| Output | <AC adaptor> Maximum power output: 35 W (17.5 W+17.5 W) <Battery> Rated power output: 20 W (10 W+10 W) (when using the alkaline batteries, Ni-MH batteries, rechargeable amp power pack (BTY-NIMH/A, sold separately)) |
| Nominal Input Level | INPUT: -10 dBu (1 MΩ) AUX IN: -10 dBu |
| Nominal Output Level | LINE OUT (L/MONO, R): -10 dBu |
| Speakers | 12 cm (5 inches) x 2 |
| Controls | [POWER] button [Bluetooth] button [MASTER] knob <AMPLIFIER> [AMP TYPE] knob [GAIN] knob [VOLUME] knob <EQUALIZER> [BASS] knob [MIDDLE] knob [TREBLE] knob <MULTI EFFECT> [BST/MOD] knob [BST/MOD] button [DELAY/FX] knob [DELAY/FX] button [TAP] button [REVERB] knob [REVERB] button <TONE SETTING> [CH A] button [CH B] button [PANEL] button |
| Indicators | POWER Bluetooth Guitar Wireless PANEL CH A CH B BST/MOD DELAY/FX REVERB TAP |
| Connectors | Input jack: 1/4-inch phone type AUX IN jack: Stereo miniature phone type PHONES jack: Stereo miniature phone type TRANSMITTER IN jack: Stereo 1/4-inch phone type LINE OUT L/MONO, R jacks: 1/4-inch phone type USB port: USB B DC IN jack |

| | |
|---|---|
| Power Supply | AC adaptor (DC 13 V) Alkaline battery (AA, LR6) x 8 Ni-MH battery (AA, HR6) x 8 Rechargeable amp power pack (BTY-NIMH/A, sold separately) |
| Current Draw | 680 mA |
| Expected battery life under continuous use | Alkaline battery: Approximately 7 hours Ni-MH battery: Approximately 10 hours (When using batteries having a capacity of 2,500 mAh.) Rechargeable amp power pack (BTY-NIMH, sold separately): Approximately 16 hours * These can vary depending on the specifications of the batteries, capacity of the batteries, and the conditions of use. |
| Dimensions | 414 (W) x 192 (D) x 236 (H) mm 16-5/16 (W) x 7-7/16 (D) x 9-5/16 (H) inches |
| Weight (excluding batteries) | 5.6 kg 12 lbs 6 oz |
| Accessories | Owner's Manual Leaflet USING THE UNIT SAFELY Transmitter AC adaptor Power cord |
| Options (sold separately) | Rechargeable amp power pack: Roland BTY-NIMH/A Wireless MIDI expression pedal: EV-1-WL Wireless Footswitch: FS-1-WL |
| Transmitter (WL-T) | |
| Nominal Input Level | INPUT: -10 dBu (1 MΩ) |
| Controls | Power button |
| Indicators | BATTERY |
| Connectors | Input plug: Stereo 1/4-inch phone type DC IN 5 V port: USB Micro-B |
| Power Supply | Lithium-ion battery Supplied from the DC IN 5 V port |
| Current Draw | 47 mA |
| Expected battery life under continuous use | Approximately 12 hours |
| Dimensions | 87 (W) x 22 (D) x 36 (H) mm 3-7/16 (W) x 7/8 (D) x 1-7/16 (H) inches |
| Weight | 43 g 2 oz |

* 0 dBu = 0.775 Vrms

* This document explains the specifications of the product at the time that the document was issued. For the latest information, refer to the Roland website.