



Rack Essentials

Rack Shelves

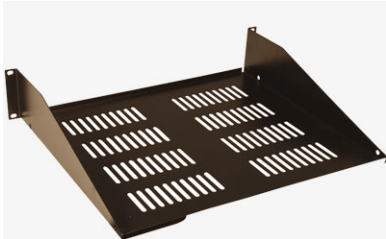
GE-KBD-SHELF, GE-SHLF10-1U, GE-SHLF15-2U, GE-SLF-SLD-1U, GE-SHLFVNT15-1U, GE-SHLFVNT15-2U, GE-SHLFVNT17-3U

Rack Shelf Features:



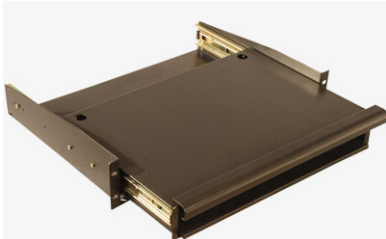
- Cold roll 16 gauge 1.5mm steel construction
- GE-SHLF-10-1U is 10" deep
- GE-SHLF-15-2U is 15" deep
- Rear flange for rigidity
- Black powder coated finish

Vented Rack Shelf Features:



- Cold roll 16 gauge 1.5mm steel construction
- Elongated vent holes for optimum air circulation
- GE-SHLFVNT-15-1U is 15" deep
- GE-SHLFVNT-15-2U is 15" deep
- GE-SHLFVNT-17-3U is 17" deep
- Rear flange for rigidity
- Black powder coated finish

Keyboard Shelf Features:



- Cold roll 16 gauge 1.5mm steel construction
- Sliding shelf for keyboard with mouse shelf
- Black powder-coated finish
- Fits most standard keyboards

SKU	WEIGHTS	SUGGESTED LIST PRICE
GE-KBD-SHELF	17 lbs	\$149.99
GE-SHLF10-1U	8 lbs	\$44.99
GESHLF15-2U	9 lbs	\$67.99
GE-SHLF-SLD-1U	8 lbs	\$89.99
GE-SHLFVNT15-1U	7 lbs	\$59.99
GE-SHLFVNT15-2U	9 lbs	\$67.99
GE-SHLFVNT17-3U	12 lbs	\$74.99

SKU	INTERIOR DIMENSIONS	Exterior Shipping Dimensions
GE-KBD-SHELF		20x15x5
GE-SHLF10-1U		22x13x1.75
GESHLF15-2U		22x18x7
GE-SHLF-SLD-1U	15x16.5x1.25	20x18x2
GE-SHLFVNT15-1U		22x18x5
GE-SHLFVNT15-2U		22x18x7
GE-SHLFVNT17-3U		22x20x9