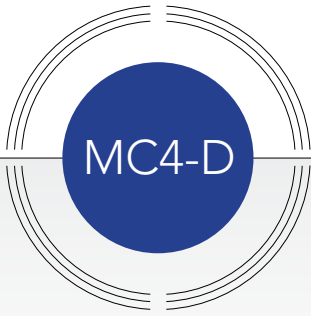


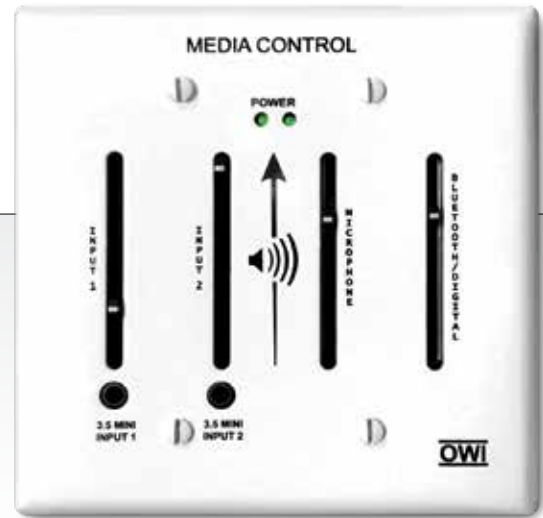
NEW



# Media Control Mixer

WITH DIGITAL TOSLINK

MIC / LINE AUDIO MIXER IN A TWO GANG ELECTRICAL BOX



## Features:

- Manual Control of Bluetooth Audio
- Simple Install and Easy to Use
- For Classrooms, Showrooms, Conference Rooms & Retail
- A Perfect Combination with the OWI Amplified Speaker Line of Products
- Quiet, Reliable Performance
- MC4 Carton Includes
  - » One (1) Each MC4
  - » One (1) UL Listed, Efficiency Level V (Energy Star) 15 V DC Power Supply
  - » Four (4) Each 6:32 Truss Head Screws)
  - » Four (4) Plastic Washers
- 2 Outputs for Flexibility of Applications
- Can Be Combined with the OWI Bluetooth Control
- Made in the U.S.A.
- Factory Support for Lifetime of Product

## Specifications:

MODEL NUMBER	MC4
Description	Mic / Line Audio Mixer in a Two Gang Electrical Box with CAT5 Connection
Power	15 V DC @ 170 ma
Channels	Four (4) Channels Plus 2 on the face
Voltage Levels	Line (-14 to +4 dBm) Mic (-55 dBm)
Outputs	Three (3) Outputs
Output Types	Balanced, 3.5 Mini Jack, and CAT 5
Output Channels	One (1) BAC on Euro Block / 3.5 Mini Stereo (Dual Mono) 1 ea. CAT 5 (CH 1)
Input Types	Primary, Front Panel Controlled Secondary, Rear
Input Types	2 ea. Front Panel 3.5 mm and 2 ea. 3.5 mm on Rear 1 ea. Rear Panel Fixed Wire (Euro Block) 1 ea. Optical
Mic / Line Inputs	Channel 3 mic / line switch on Rear for Input #3



## • Media Control Mixer - MC4

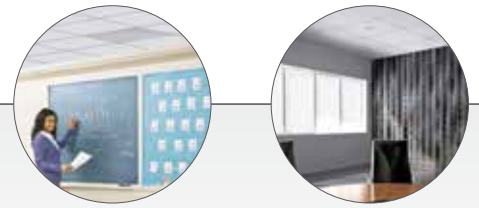
- » Gangbox Not Included
- » 6 Inputs Total – 4 Each Back Panel / 2 Each Front Panel with Override on Two
- » Selectable Line or Mic Level Input Slider (CH 3)
- » Two Each 3.5 Mini Front Inputs
- » Four Sets of Slider Level Controls for Easy Mix
- » Balanced Line Output
- » RJ45 / CAT 5 Connectivity with an OWI Amplified Speaker



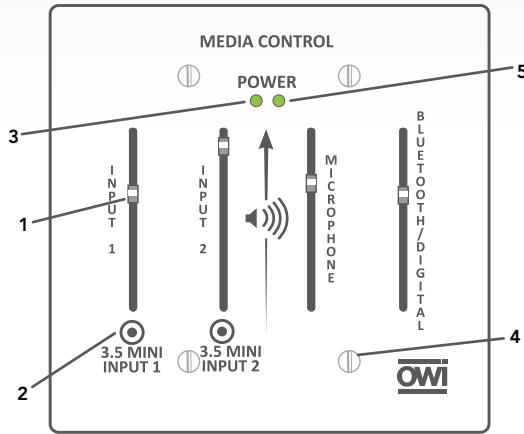
# Media Control Mixer

WITH DIGITAL TOSLINK

MIC / LINE AUDIO MIXER IN A TWO GANG ELECTRICAL BOX

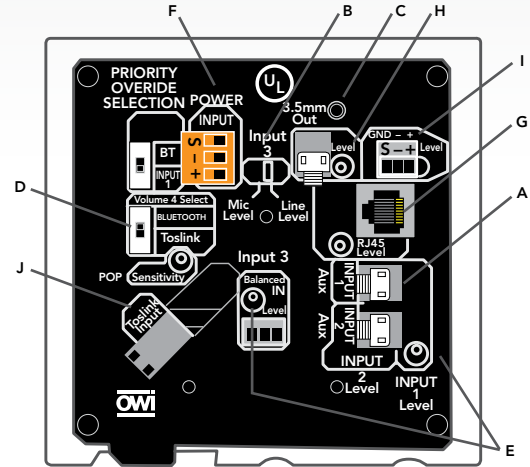


Perfect for classroom, showroom, conference room or retail store applications



MC4 – Front Panel Features:

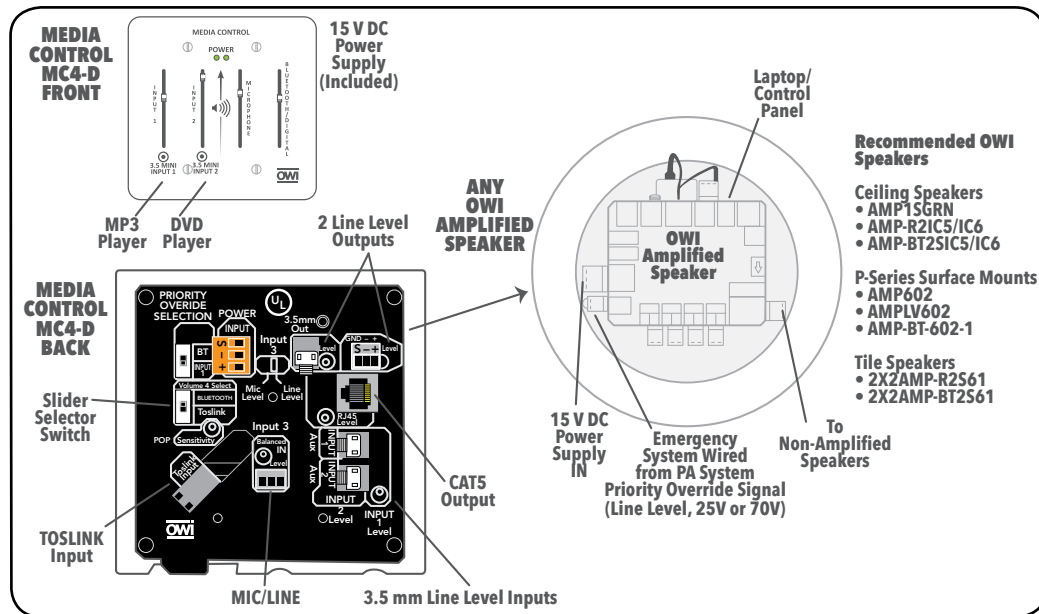
- 1 Four Sliders (Line Level or Mic Level Inputs)
- 2 Two 3.5 Mini Input Jacks (Channels 1 and 2) Jacks are Stereo and Combine to Mono at the Jack. They Can Be Selected on Rear Panel.
- 3 LED Power Indicators
- 4 Four Screws/Washers
- 5 Pairing LED Indicator



MC4 – Back Panel Features:

- A 2 ea. Line Level Inputs
- B 1 ea. Mic or Line Switch for Inputs 3
- C Balanced 3.5 Mini Jack, and CAT 5
- D Dip Switch for Slider Assignment
- E 3 ea. Trim Controls for Inputs 1, 2 & 3
- F 15V DC Power Input
- G RJ45/CAT 5
- H Volume Control for Outputs
- I Balanced Line Output A (Main)
- J TOSLINK

## MC4-D WIRING DIAGRAM



OWI Incorporated  
 17141 Kingsview Ave.,  
 Carson, CA 90746 U.S.A.  
 ph.: 310.515.1900  
 toll free: 800.638.1694  
 fax: 310.515.1606  
 email: info@owi-inc.com



[www.owi-inc.com](http://www.owi-inc.com)  
 Specification sheets available for download  
[owi-inc.com/mc4-media-control-mixer](http://owi-inc.com/mc4-media-control-mixer)