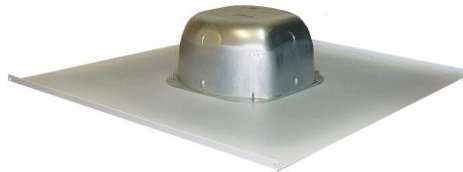


# OWI INC

## USER'S MANUAL

### Model: 2X2IC6NA

---



**OWI Incorporated**  
17141 Kingsview Ave. Carson CA 90746-1207 USA  
Tel. 310-515-1900 Fax 310-515-1606

[info@owi-inc.com](mailto:info@owi-inc.com)

[www.owi-inc.com](http://www.owi-inc.com)

Technical Support 310-515-1900

PROPRIETARY NOTICE

The OWI Inc. product information and design disclosed herein were originated by and are the property of OWI Inc. OWI Inc. reserves all patent, proprietary design, manufacturing, reproduction, use and sales rights thereto, and to any article disclosed therein, except to the extent right(s) are expressly granted to others.

COPYRIGHT NOTICE

This manual is Copyright 2014 by OWI Inc. All rights reserved. Reproduction in whole or in part without written prior permission from OWI, Inc. is prohibited.

UNPACKING AND INSPECTION NOTICE

Immediately upon receipt of the equipment, inspect the shipping container and the contents carefully for any discrepancies or damage. Should there be any, notify the freight company and OWI, Inc. or the dealer where purchased at once.

LIMITED WARRANTY

1. This product has been thoroughly tested and inspected at the factory. It is warranted for one year from the date of purchase.  
IT IS THE OWNERS' RESPONSIBILITY TO ESTABLISH THE DATE OF PURCHASE BY ACCEPTABLE EVIDENCE AT TIME SERVICE IS SOUGHT.
2. Any unit, which in the judgment of OWI INC, is defective or develops defects under normal use will be replaced or repaired without cost within the warranty period.
3. This warranty will be considered void if the unit is dropped, misused, abused and altered in any manner, overdriven with excess amplification exceeding manufacturer's specification, improperly serviced or accidentally damaged.
4. OWI Inc. shall have no liability whatsoever for consequential damages. The sole responsibility at the discretion of OWI Inc. under this warranty shall be limited to the repair of the product or replacement thereof. Any and all implied warranties including the implied warranty of merchantability are limited to the duration of this express limited warranty.  
OWI, Inc. is NOT liable for incidental or consequential damages of any kind.
5. IMPORTANT: This warranty is void unless the attached card is completed and mailed to OWI Inc. within 10 days following the date of purchase. Units must be sent to OWI Inc. or to the dealer where purchased.

RETURN SHIPPING INSTRUCTIONS, Obtain a RETURN AUTHORIZATION from:  
OWI Inc., 17141 Kingsview Ave, Carson, CA 90746.  
Phone (310) 515-1900, Fax (310) 515-1606

FCC Notice: This equipment has been tested and found to comply with the limits for a Class A digital device, pursuant to part 15 of the FCC Rules. These limits are designed to provide reasonable protection against harmful interference when the equipment is operated in a commercial environment. This equipment generates, uses, and can radiate radio frequency energy and, if not installed and used in accordance with the instruction manual, may cause harmful interference to radio communications. Operation of this equipment in a residential area is likely to cause harmful interference in which case the user will be required to correct the interference at his or own expense.

Modifications not expressly approved by the manufacturer could void the user's authority to be operated under FCC rules.

## Table of Contents

<b>Description</b>	<b>Page</b>
Proprietary, Copyright Notices	2
Unpacking and Inspection	2
Warranty Information	2
Return Shipping Instructions	2
Table of Contents	3
Important Safety Instructions	4 - 5
Specifications	6
Installation	6 - 7
Warranty	8
Back Cover	9

## IMPORTANT SAFETY INSTRUCTIONS



### CAUTION



**RISK OF ELECTRIC SHOCK - DO NOT OPEN**

**NOTE:** Installation is to be completed by a qualified electrical technician according to NEC/CEC code and applicable local codes.

**CAUTION:** The power supply is not to be used in air handling spaces.

**CAUTION:** To reduce the risk of electric shock: Do not remove the cover or back: No user-serviceable parts inside: refer servicing to qualified personnel.

The lightning flash with arrowhead within an equilateral triangle is intended to alert the user to the presence of uninsulated “dangerous voltage” within the product’s enclosure that may be of sufficient magnitude to constitute a risk of electric shock to persons.

The exclamation point within an equilateral triangle is intended to alert the user of the presence of important operating and maintenance (servicing) instructions in the literature accompanying the appliance.

The apparatus shall not be exposed to dripping or splashing and that no objects filled with liquids, such as vases, shall be placed on the apparatus.

### IMPORTANT SAFETY INSTRUCTIONS

1. Read these instructions. All the safety and operation instructions should be read before this OWI product is operated.
2. Keep these instructions - The safety and operating instructions should be kept for future reference.
3. Heed all warnings - All warnings on this product and in these operating instructions should be followed.
4. Follow all instructions - All operating and other instructions should be followed.
5. Do not use this apparatus near water - for example, near a bathtub, washbowl, kitchen sink, laundry tub, in a wet basement, near a swimming pool, or a swamp.
6. Clean only with dry cloth.
7. Do not block any ventilation openings. Install in accordance with the manufacturer’s instructions. - This OWI product should be situated so that its location or position does not interfere with its proper ventilation. For example, the component should not be situated on a bed, sofa, rug, or similar surface that may block any ventilation openings, or placed in a built-in installation such as a bookcase or cabinet that may impede the flow of air through ventilation openings.
8. Do not install the unit near any heat sources such as radiators, heat registers, stoves or other apparatus (including amplifiers) that produce heat.

9. Do not defeat the safety purpose of the polarized or grounding-type plug. A polarized plug has two blades with one wider than the other. A grounding type plug has two blades and a third grounding prong. The wider blade or the third prong is provided for your safety. If the provided plug does not fit into your outlet, consult an electrician for replacement of the obsolete outlet.
10. Protect the power cord from being walked on or pinched particularly at plugs, convenience receptacles, and the point where they exit the apparatus.
11. Only use attachment/accessories specified by the manufacturers.



Portable Cart Warning

12. Use only with the cart, stand, tripod, bracket or table specified by the manufacturer, or sold with the apparatus. When a cart is used, use caution when moving the cart/apparatus combination to avoid injury from tip-over.
13. Unplug this apparatus during lightning storms or when unused for long periods of time.
14. Refer all servicing to qualified service personnel. Servicing is required when the apparatus has been damaged in any way, such as power-supply cord or plug is damaged, liquid has been spilled or objects have fallen into the apparatus, the apparatus has been exposed to rain or moisture, does not operate normally, or has been dropped. The user should not attempt to service this OWI product beyond those means described in this operating manual. All other servicing should be referred to the OWI Service Department.
15. **WARNING:** To reduce the risk of fire or electric shock, do not expose this apparatus to rain or moisture.
16. To prevent electric shock, do not use this polarized plug with an extension cord, receptacle or other outlet unless the blades can fully be inserted to prevent blade exposure.
17. Exposure to extremely high noise levels may cause permanent hearing loss. Individuals vary considerably in susceptibility to noise-induced hearing loss, but nearly everyone will lose some hearing if exposed to sufficiently intense noise for a period of time. The U.S. Government's Occupational Safety and Health Administration (OSHA) has specified the permissible noise level exposures shown in the following chart. According to OSHA, any exposure in excess of these permissible limits could result in some hearing loss. To ensure against potentially dangerous exposure to high sound pressure levels, it is recommended that all persons exposed to equipment capable of producing high sound pressure levels use hearing protectors while the equipment is in operation. Ear plugs or protectors in the ear canals or over the ears must be worn when operating the equipment in order to prevent a permanent hearing loss if exposure is in excess of the limits set forth here.
18. OWI recommends that this apparatus be placed on a switched power outlet, one that switches both sides and has contact separation of at least 3 millimeters.

**End of IMPORTANT SAFETY INSTRUCTIONS**

**IN-CEILING MOUNT SPEAKERS  
INSTALLATION / OWNERS' MANUAL**

**MODEL 2X2IC6NA**

**SPEAKER SPECIFICATIONS:**

**MODEL 2X2IC6NA**

DESCRIPTION:	6.5" 2-Way, In-Ceiling Speaker
IMPEDANCE:	8 ohms
SENSITIVITY (1W/1M):	87 dB 1w/M
DISPERSION:	140°
MAX POWER:	50 watts
NOMINAL POWER:	25 watts
FREQUENCY RESPONSE:	65Hz-20KHz
WOOFER SIZE:	6.5"
WOOFER MATERIAL:	Paper Coated Woofer Foam Surround
TWEETER SIZE:	.5" (13 mm) Balance Tweeter
TWEETER MATERIAL:	Ferrite Magnet with Mylar Diaphragm
GRILL MATERIAL:	Metal
DIMENSIONS:	2 Ft. x 2 Ft. x 4.5"
WEIGHT:	11 lbs. (4.99 Kgs)

**INSTALLATION:**

**Speaker Placement**

Before installing your OWI speakers, consider the placement carefully, taking into effect the location of electrical, plumbing and other fixtures.

**Placement in Ceiling**

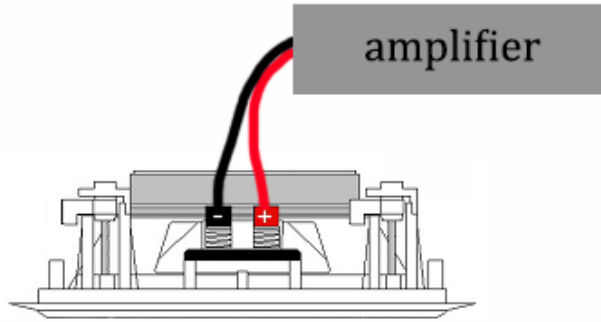
OWI speakers should be ideally located above the primary listening area.

**Mounting your OWI Speakers**

Determine the best area to mount your OWI speakers. It will be necessary to run your speaker wires to that location. This location must be free of obstructions, such as electrical conduits, HVAC ducts, or water lines.

Be sure there is at least a 4 <sup>1/2</sup> inch clearance for the 2X2IC6NA behind the mounting surface and no wall studs or other objects block the back of the speaker.

Route the speaker wires from your amplifier to your opening. Avoid routing the speaker wire near electrical wires. If you have to run them parallel, make certain to space the speaker wires at least 2 feet from the AC line. Do not nail or staple the speaker wire.



Connect the speaker wires to the speaker terminals. Connect one end of the red speaker cable to the red (+) terminal and the end of the black (-) speaker cable to the black terminal of the speaker. Make sure that none of the strands from the black and red wires are touching each other to prevent damage to your speaker and amplifier due to short circuit.

Place the 2X2IC6NA into the opening securing it firmly on the 2X2 frame.

### Proper Wire Gauge Selection

The gauge of wire required is determined by the distance between your amplifier/receiver and the speakers. Use the following chart as a guide:

<b>Length</b>	<b>Minimum Gauge</b>
Less than 10 feet	18 - 20 Gauge
10 to 100 feet	16 to 18 Gauge
Over 100 feet	14 Gauge



**LIMITED FIVE YEAR WARRANTY**  
(2X2IC6NA NON-AMPLIFIED IN-CEILING SPEAKER)

1. Your OWI speakers have been thoroughly tested and inspected at the factory. They are warranted for 5 years from the date of purchase. **It is the owner's responsibility to establish the date of purchase by acceptable evidence at the time service is sought.**
2. If the speaker proves to be defective in materials or workmanship within five years from the date of the original customer purchase, OWI, at its sole option may repair or replace the unit with a current model of equal or greater value. In some cases where a new model is substituted, a modification to the mounting surface may be required. If mounting surface modification is required, OWI assumes no responsibility or liability for such modification.
3. Exclusion of certain damages

Liability for any defective product is limited to repair or replacement of the product at our option. OWI Inc. shall have no liability whatsoever for any incidental or consequential damages of any kind of character because of product defect. **The sole responsibility of OWI Inc. under this warranty shall be limited to the repair of the product or replacement thereof, and is the sole discretion of OWI Inc.** Some states do not allow limitation on how long an implied warranty lasts and/or do not allow the exclusion or limitation of incidental or consequential damages, so the above limitation may not apply.

4. This warranty does not cover:
  - a. Damage caused by abuse, accident, misuse, negligence, improper operation(installation), overdriven with excessive amplification.
  - b. Products that have been altered or modified.
  - c. Any product whose serial number has been altered or removed.
  - d. Normal wear and maintenance.
  - e. Damages caused by shipping. All claims for shipping must be made with the carrier.

5. What OWI Inc. will pay for and what YOU must pay for:

OWI will repair or replace unit(s) covered by this warranty without charge to the customer for labor or materials. **You are responsible for any installation or removal charges and for any initial shipping charges**, if the unit(s) must be shipped for warranty service. However, OWI Inc. will pay the return shipping charges to any destination within the USA, if the repairs are covered by the warranty.

6. Warranty Service

Units for warranty repair must be sent to OWI Inc., or to the dealer where purchased, postage prepaid. Copy of original proof of purchase to be included with the speaker(s).

**Please cut here and mail to OWI Inc.** \_\_\_\_\_

**LIMITED WARRANTY**

Model Number: \_\_\_\_\_ Model Name: \_\_\_\_\_

Serial No. \_\_\_\_\_ Date of Purchase: Month: \_\_\_\_\_ Day \_\_\_\_\_ Year \_\_\_\_\_

Owner's Name: \_\_\_\_\_ Address: \_\_\_\_\_

City: \_\_\_\_\_ State \_\_\_\_\_ Zip \_\_\_\_\_

Dealer's Name: \_\_\_\_\_ City \_\_\_\_\_ State \_\_\_\_\_

Purchased from (please check one):

Video , Electronic , Mail Order , Mass Merchandiser , Installer

Others (please specify) \_\_\_\_\_

Remarks: \_\_\_\_\_





OWI Incorporated

Established 1978

**OWI Incorporated**

17141 Kingsview Ave. Carson CA 90746-1207 USA  
Tel. 310-515-1900 Fax 310-515-1606

[www.owi-inc.com](http://www.owi-inc.com)