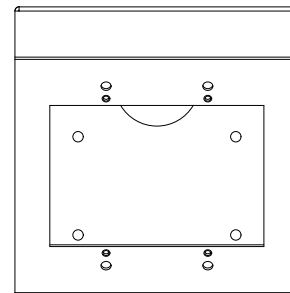
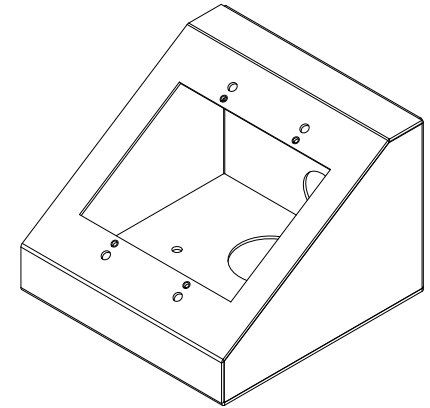


# CONTROL PANEL MOUNT

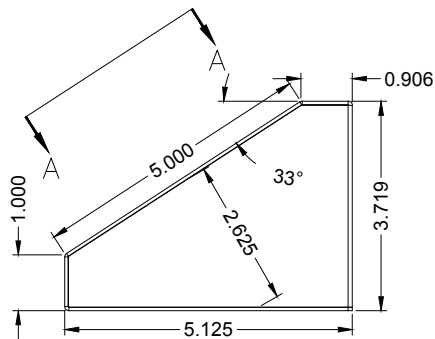
147G2BK



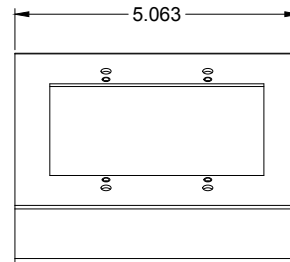
PROUDLY MADE  
IN THE U.S.A.



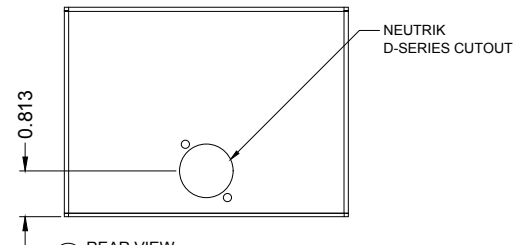
① TOP VIEW



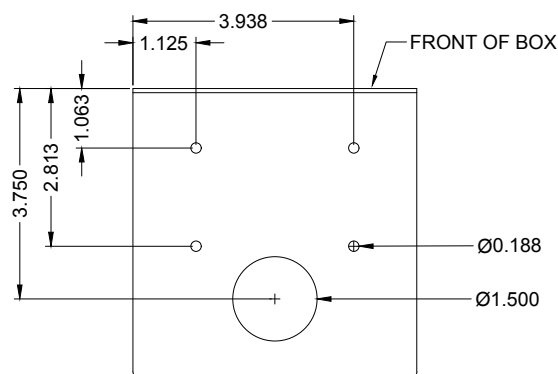
② SIDE VIEW



③ FRONT VIEW



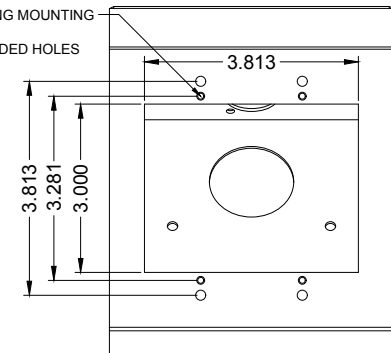
④ REAR VIEW



⑤ BOTTOM VIEW

Auxiliary A - A

STANDARD 2-GANG MOUNTING  
HOLE PATTERN  
WITH 6-32 THREADED HOLES



REVISION: 11/2019

FINISH CHOICES:

- Textured Black Powder Coat

CAPACITY:

(1) 2-gang device or panel.

DESCRIPTION:

Table Top Control Panel Mount for portable or permanent table/wall placement. Parts are 18/16ga CRS.

REV  
1  
SHEET  
1 OF 1