



Hi-End Mastering-grade AD/DA Converter

AMARI

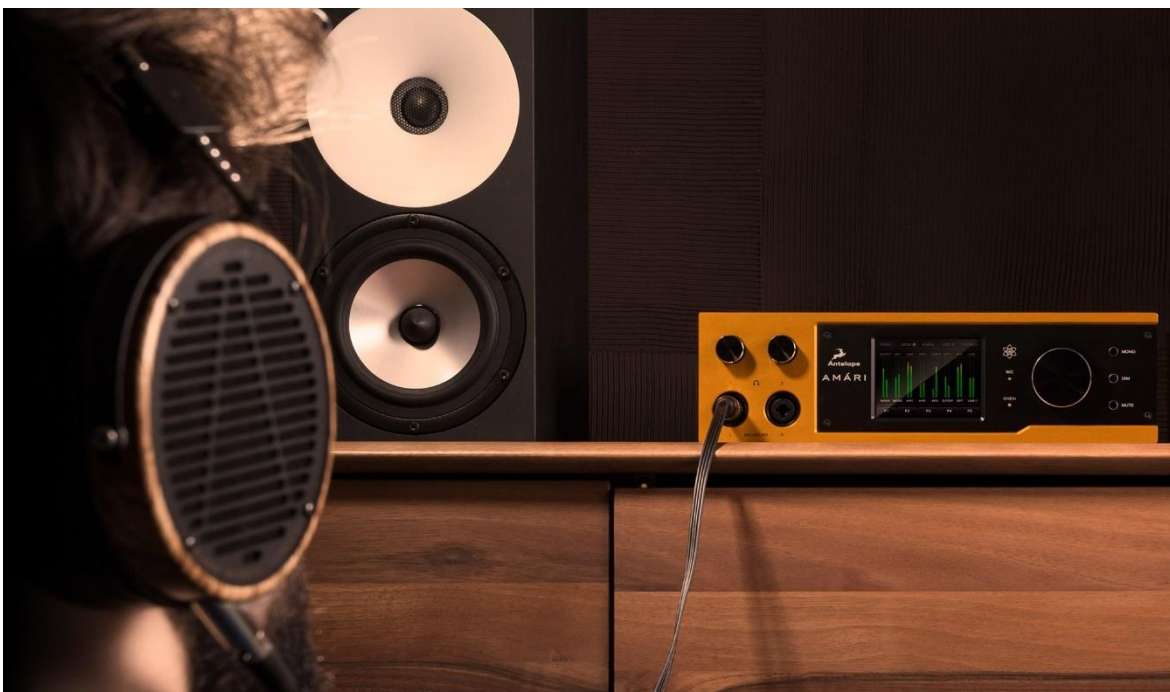


CONTENTS

BEFORE YOU BEGIN.....	3
MANDATORY ONLINE ACTIVATION.....	4
ANTELOPE LAUNCHER.....	10
FRONT PANEL EXPLAINED	17
REAR PANEL EXPLAINED	21
CONTROL PANEL.....	23
Glossary.....	30
CUSTOMER SUPPORT INFORMATION.....	32
MY ANTELOPE AUDIO PRODUCT ISN'T WORKING WHAT SHOULD I DO?	33
LIMITED WARRANTY POLICY	34
SAFETY NOTES	38
Technical Specifications	40



BEFORE YOU BEGIN



Congratulations on your purchase! We'd like to turn your attention to the following: For mastering engineers and home audio enthusiasts who seek high-end sound quality for critical listening and audio archiving, AMÁRI is a reference-grade AD/DA converter with 24-bit, 384 kHz conversion and signature Antelope clocking. An easy-to-use interface, and 2 headphone outputs with user-adjustable impedance complete AMÁRI's unique profile.

AMÁRI can be operated from the front panel touchscreen and controls, or the Win/Mac software Control Panel with equal ease. However, installing the Antelope Audio launcher and software for AMÁRI is compulsory to operate the unit correctly and keep it up to date.

Should you ever find yourself struggling, do not hesitate to contact our [Customer Support](#) team over phone, live chat and our ticket system. You can also visit [Antelope Audio on YouTube](#) and explore our video tutorials or join the [Antelope Audio Users](#) Facebook group and ask for advice. The [Knowledge Base](#) is also a good source of information.

Best wishes,
Team Antelope



MANDATORY ONLINE ACTIVATION

Please note that the mandatory device activation procedure requires an active Internet connection on your computer. Activating an Antelope device offline is not possible.

Step 1: Getting Started

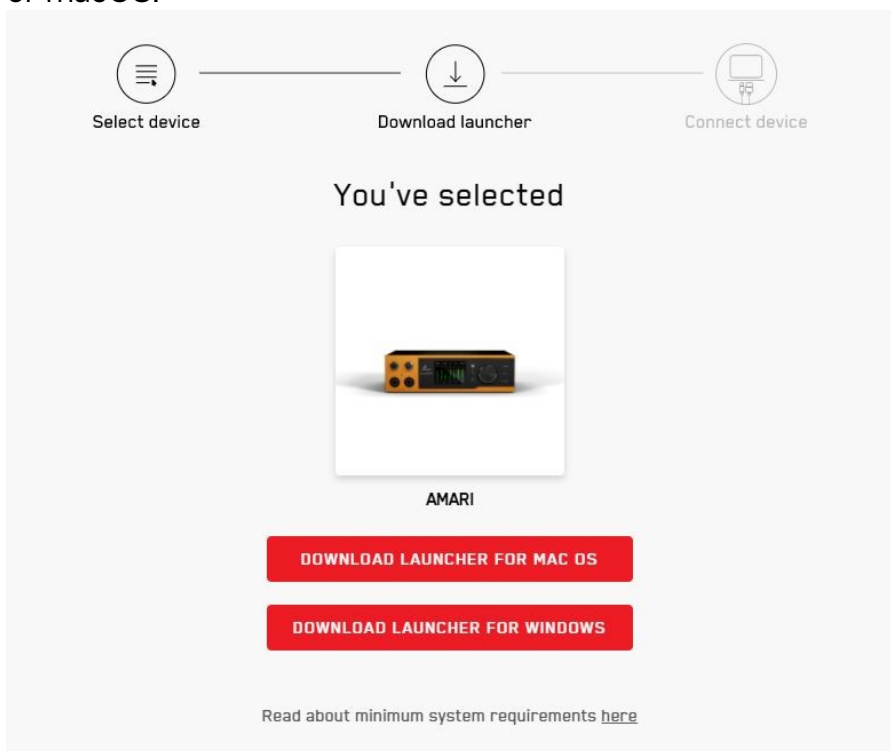
Connect the Amari power adapter to an AC power source. Plug in the device to your Windows or Mac computer.

Step 2: Login/Creating an Antelope Audio User Account

Open your internet browser and navigate to <https://antelopeaudio.com/login/>. Login to the Antelope Audio user area with your e-mail and password. If you don't have an account, visit <https://antelopeaudio.com/sign-up/> to create one.

Step 3: Installing Antelope Launcher (macOS & Win)

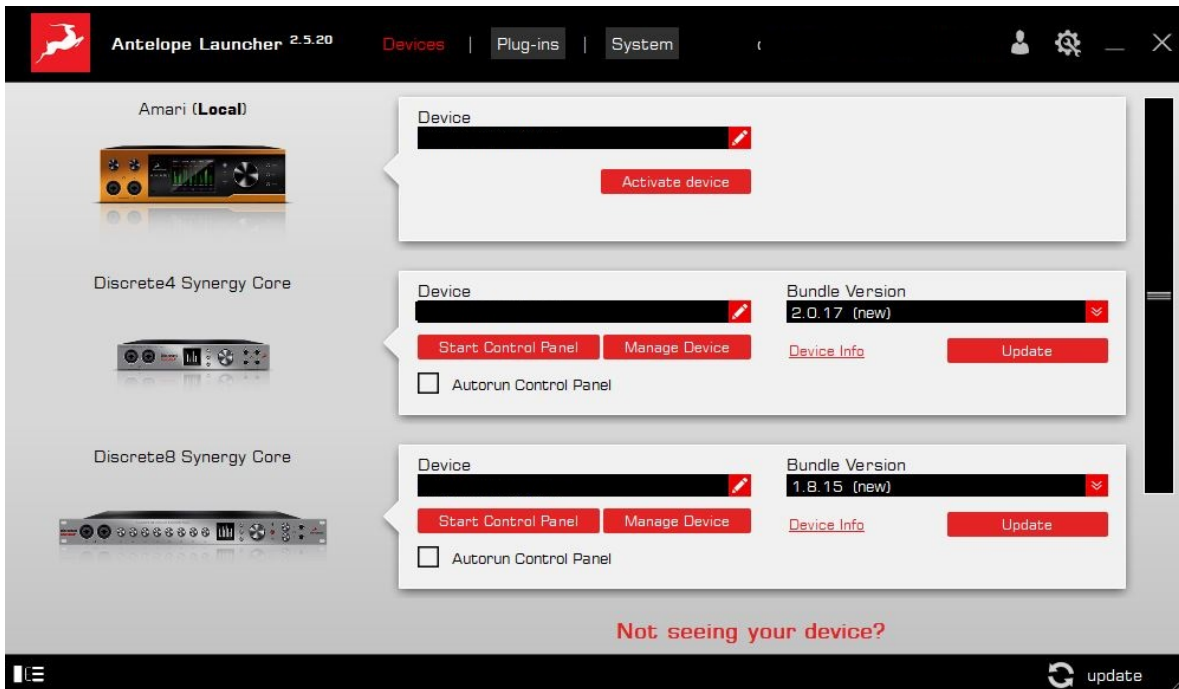
Click on the 'Activate New Device' button and then choose the 'Amari' from the device list. Download and install the Antelope Launcher application for Windows or macOS.





Step 4: Antelope Audio Product Activation

Once downloaded, open the Antelope Launcher application, and click on the 'Login' button. Enter the e-mail and password you used to login into the Antelope Audio user area and click 'Login'. Then, click on 'Activate device'. If the Amari does not appear in the 'Devices' tab, click on 'Not seeing your device?' and follow the on-screen instructions.



In the Antelope Management Wizard window, choose 'Activate device or assign features' and click 'Continue'. In the subsequent window, place a checkmark next to 'Register device' and click 'Continue'. Upon successful activation, the final window will read 'Congratulations! You have successfully activated your device.' Click 'Done' and the activation is finished.

Step 5: Software Update

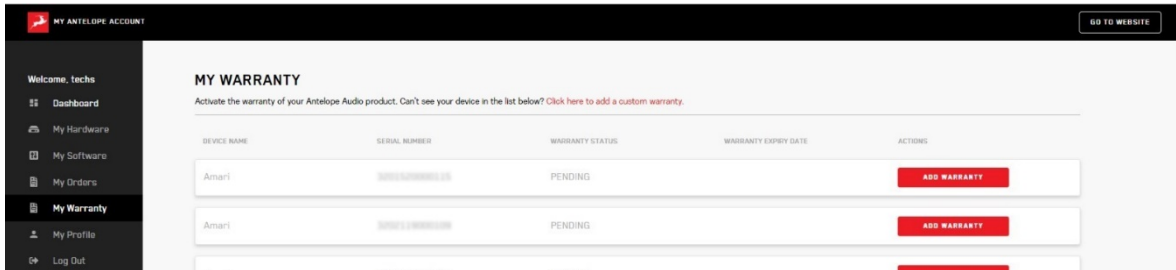
After successful activation, it is time to complete the final step before you can use your product. Update the Amari to the latest firmware and Control Panel versions. To do this, simply open Antelope Launcher and click the 'Update' button below the 'Bundle Version' drop-down menu.



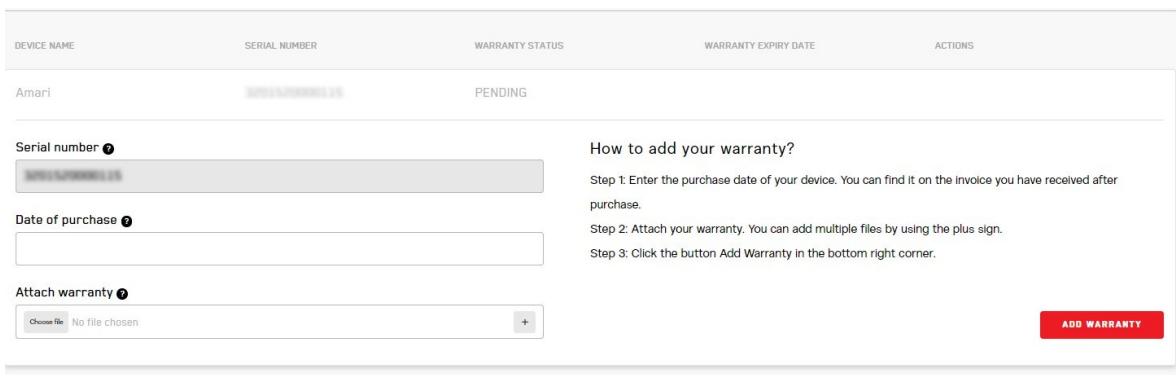


Step 6: Activate your product warranty

Lastly, you will be required to activate your product warranty. This is done from the **My Warranty** tab in **My Antelope Account**.



If you have successfully activated your product, it should now appear under **My Warranty**. Click on **Add Warranty**.



On the following screen you will be asked to enter information about your new device and to attach your warranty. You can add multiple files (up to five) by using the plus sign. Acceptable formats are .pdf, .jpg, .png, .jpeg, .heif, and the size limit is 7 MB per file. Once you have completed the steps click **Add Warranty**.



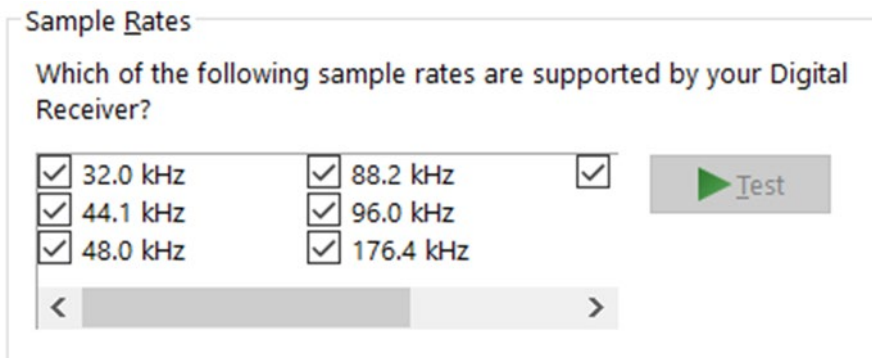
After successfully completing the process, you can click on **View Warranty** to see if your file has been uploaded correctly.



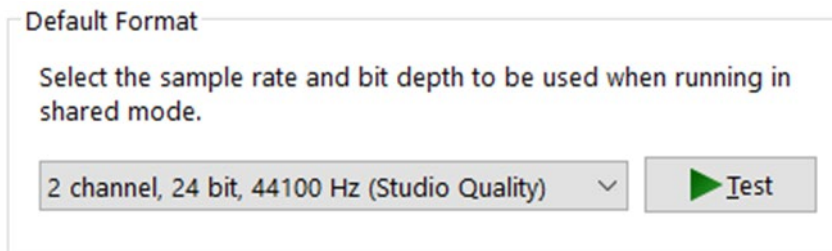
Configuring for Windows 10

Windows 10 needs a few tweaks to get everything up and running.

1. Enter the **'Sounds'** options window from the Control Panel or right-click the speaker icon in the system tray and choose 'Open Sound settings'.
2. Make sure AMÁRI is chosen under 'Output' and 'Input'.
Next, click 'Device Properties' under 'Output'. Then, click 'Additional Device Properties'.
3. Enter the **'Supported Formats'** tab and place checkmarks next to all the available sample rates.



4. Enter the **'Enhancements'** tab and make sure all enhancements are disabled.
5. Enter the **'Advanced'** tab and choose any of the available "2 channel, 24-bit" modes.
Click 'OK' to close the window.



6. Back in Sound settings, click 'Device Properties' under 'Input'. Then, click 'Additional Device Properties'. Enter the 'Enhancements' tab and disable all enhancements. Click 'OK' to close the window.



Tips

- You can disable the device and enable it again from the 'Playback' tab to refresh the driver. This will be similar to disconnecting and re-connecting your device, which makes Windows reset the playback configuration of the applications you are using.
- In some cases, disabling the 'Exclusive mode' functionality from the 'Advanced' tab in 'Playback' Properties might help when running multiple playback applications at the same time.
- Disabling the 32kHz sample rate isn't mandatory, but it might help in general.

Further Reading

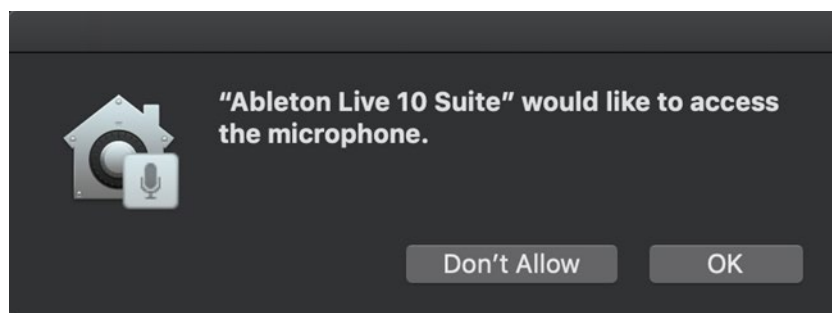
Antelope Audio Knowledge Base - [Windows 10 Optimization](#)

Configuring for macOS (10.14 or later)

The new security settings introduced in macOS Mojave 10.14 (and later releases) may result in no input signal reaching your DAW, despite having everything set up correctly.

These steps apply when you are using AMÁRI in a DAW for the first time:

1. Launch your DAW and choose AMÁRI as the input device. The following dialog box will appear (if using Ableton Live 10 Suite, for example):



3. Click 'OK' and your DAW should function normally.

However, if the events above did not occur for some reason, or you are using multiple DAWs, you must do a manual tweak for each in 'Security & Privacy' settings:



1. Click the 'Apple' symbol and choose 'System Preferences'. Head to the 'Security & Privacy' settings menu.
2. Click the 'Privacy' tab. In the column on the left, choose 'Microphone'. Make sure there's a checkmark next to any DAW you want to use:

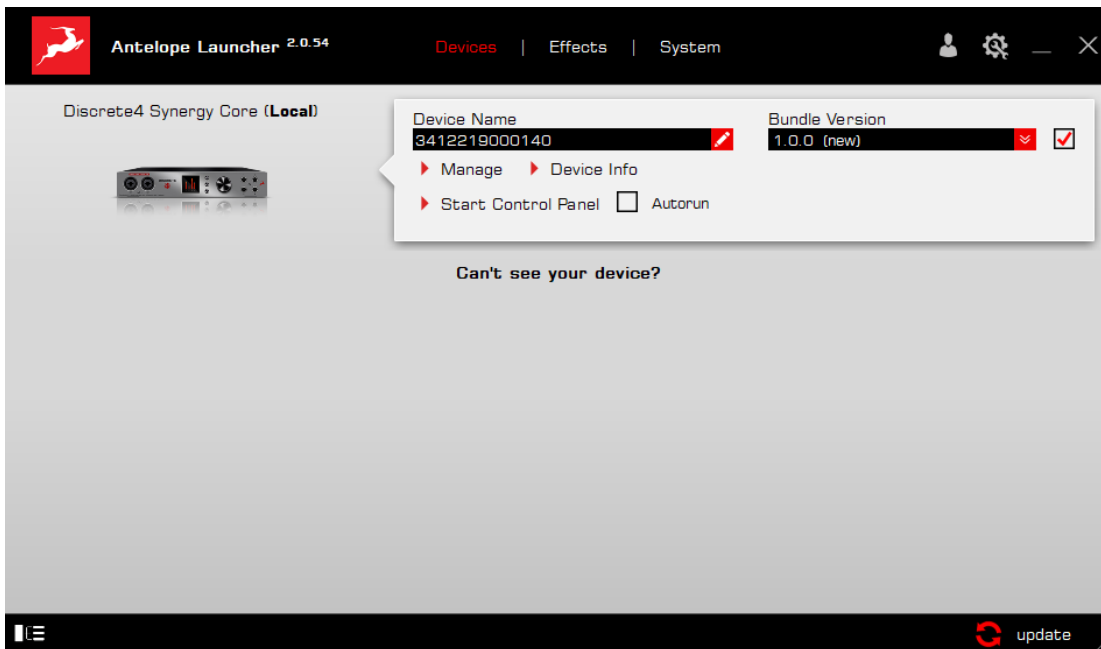




ANTELOPE LAUNCHER

The Antelope Launcher is a streamlined hub for managing and troubleshooting your Antelope Audio products. The application is organized into the following tabs:

'Devices' tab



All Antelope Audio devices currently connected to your computer are listed in this section. In this example, we have connected the Discrete 4 Synergy Core. However, the application functionality is identical for each Antelope device.

The following functionality is available in the 'Devices' tab:

Device Name

Click the black box to enter a name for your device. The device serial number is used by default. Erasing the name and clicking outside the box reverts to the serial number.



Bundle Version

By default, this drop-down menu shows the most recent software bundle available for your device. Clicking it shows the currently installed software bundle version and lets you roll-back to an older build.

To update or change the installed software version, choose your desired Bundle Version, click the check mark next to the drop-down menu, and click the 'Update' button.

Manage

Click to launch the Antelope Registration Wizard. Use it to register or de-register devices and features (such as AFX2DAW, Synergy Core FX, HDX Activation and so on).

Device Info

Click to display the following information (useful for troubleshooting):

- Serial number
- Hardware version
- Firmware version
- Control Panel version
- USB/Thunderbolt™ driver version
- Software Bundle version

Click the information window to close it.

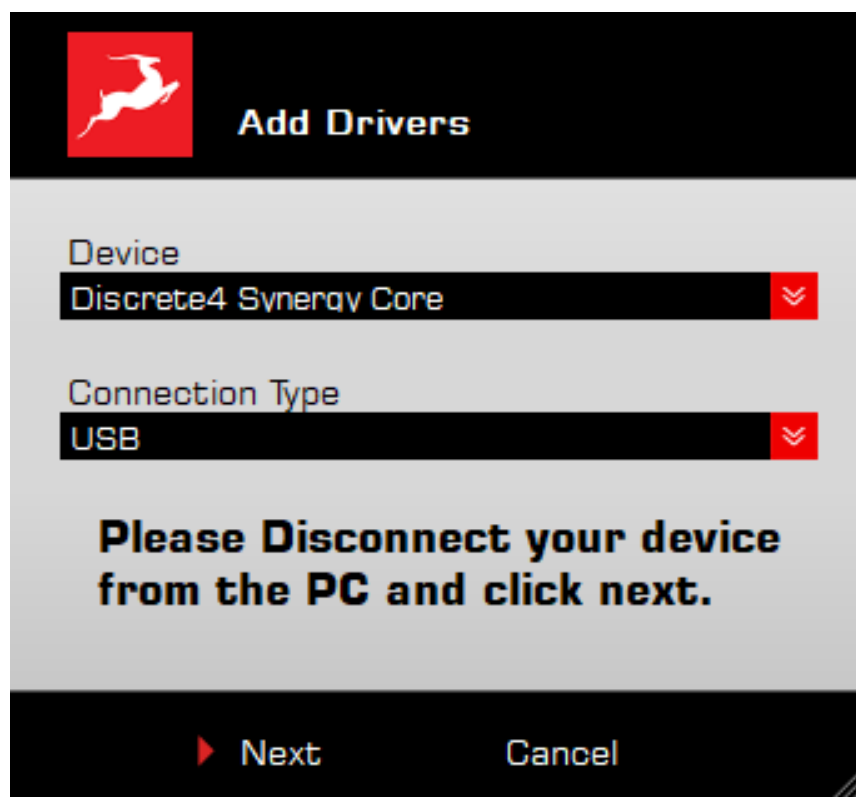
Start Control Panel

Click to start the device's Control Panel application. You can also click the device's picture. Place a check mark next to 'Autorun' to have the Control Panel for a specific device launch automatically when you start Antelope Launcher.



Can't see your device?

If a device is missing from the list, the most common reason is driver conflict. The Antelope Launcher makes it easy to re-install drivers and troubleshoot. Click "Can't see your device?" to launch the 'Add Drivers' wizard.

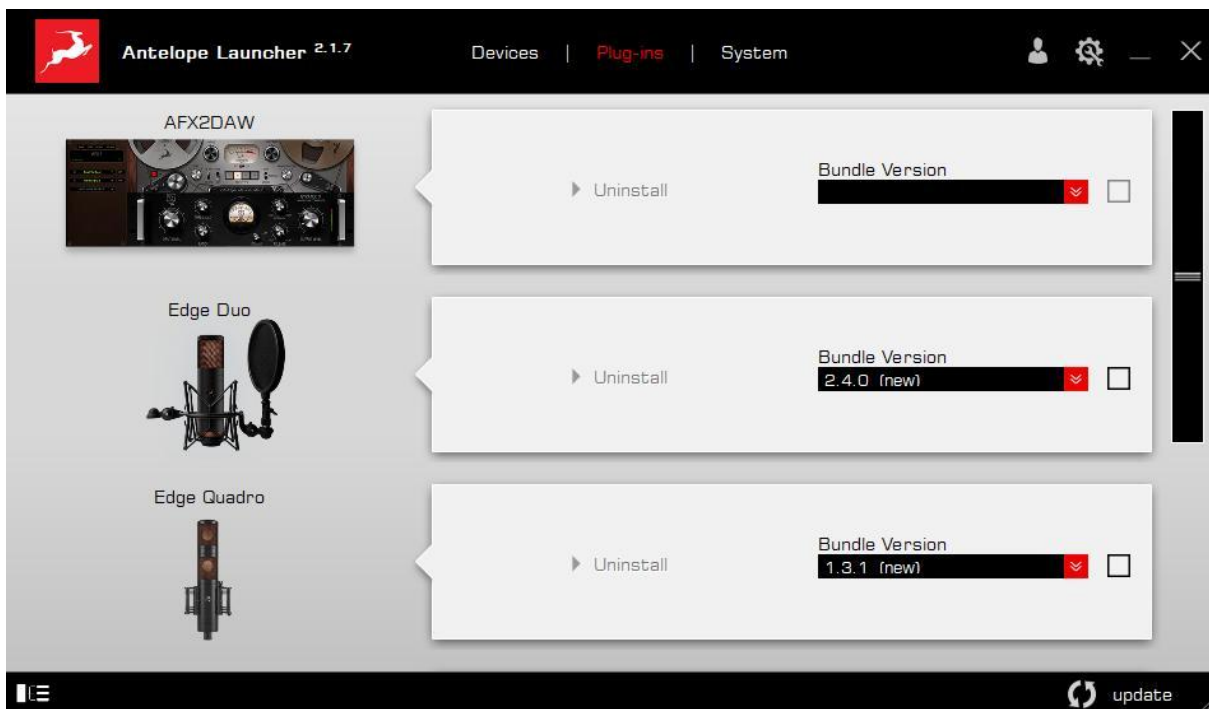


Choose your device and connection type from the drop-down menus, disconnect the device from your computer, and click 'Next' to perform a driver re-install.

Note: If the issue persists, please contact [Antelope Audio Customer Support](#).



'Plug-ins' tab



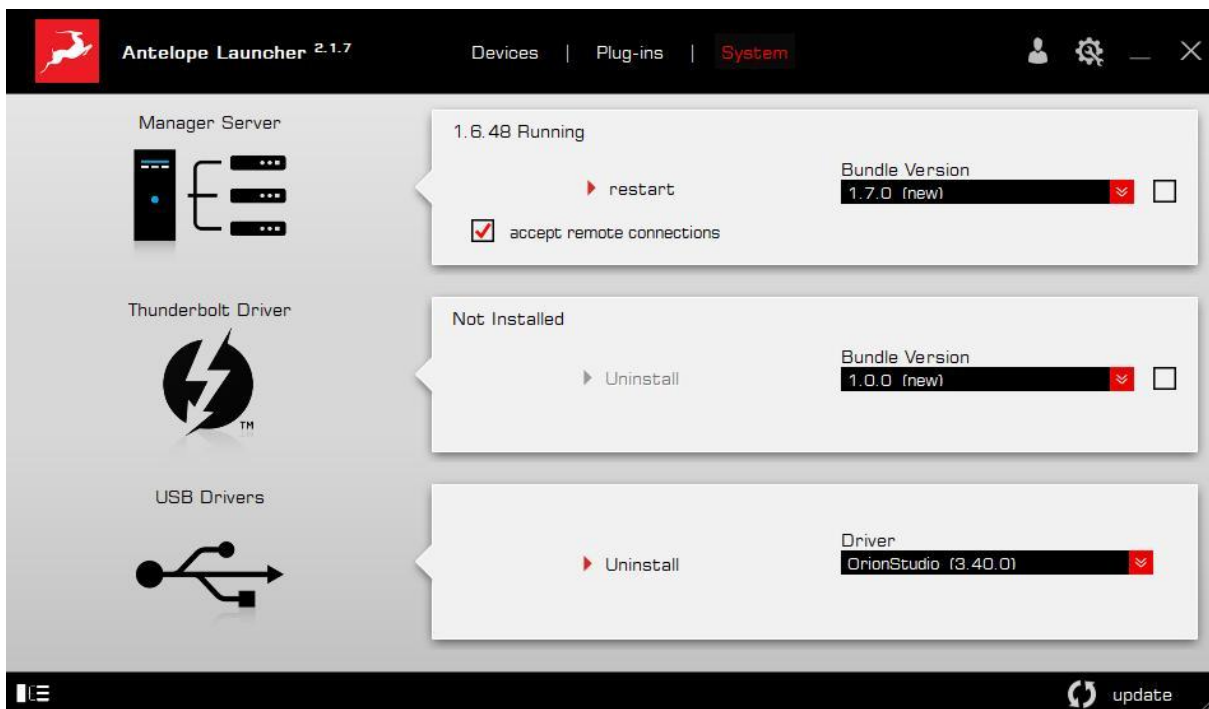
This section lets you install, update, and uninstall Antelope Audio software such as native mic emulations and AFX2DAW.

By default, the Bundle Version drop-down menus show the most recent software bundle available for each product. Clicking the menu shows the currently installed software bundle version and lets you roll-back to an older build.

To update or change the installed software version, choose your desired Bundle Version, click the check mark next to the drop-down menu, then click the 'Update' button.



'System' tab

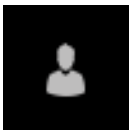


Here, you can do the following:

- Update or roll-back the Manager Server, USB and Thunderbolt™ Driver versions. Choose your desired Bundle Version from the drop-down menu, click the check mark, then click the 'Update' button.
- Restart the Manager Server and enable/disable remote connections from other computers on your network.
- Install the Antelope Audio Thunderbolt™ driver. Choose a Bundle Version from the drop-down menu, click the check mark, then click the 'Update' button.
- Uninstall the Antelope Audio Thunderbolt™ and/or USB driver(s) present on your system.



Login button

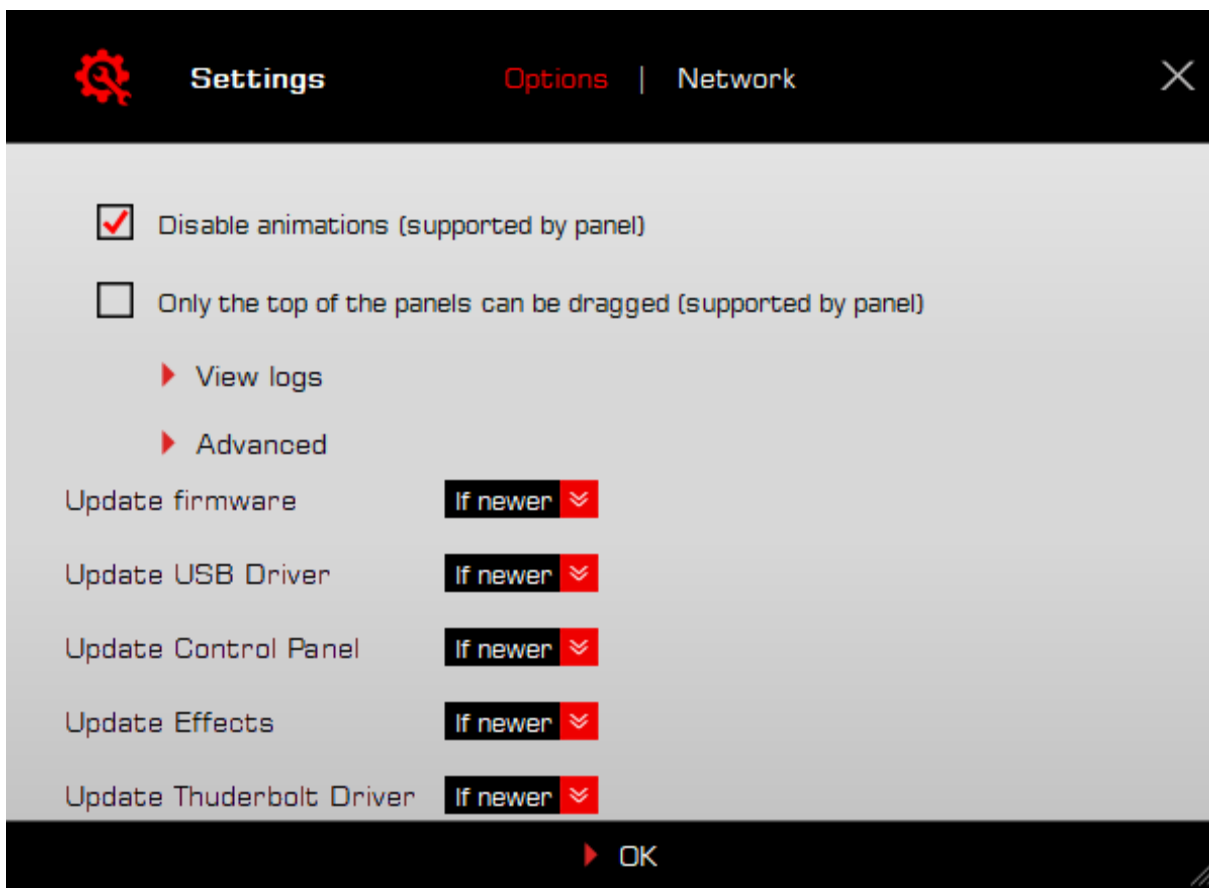


Click and enter your Antelope Audio username and password, then click 'Login'. If you don't have an Antelope Audio account, click 'Register' and follow the on-screen instructions.

Settings button



Click to open the Settings window.



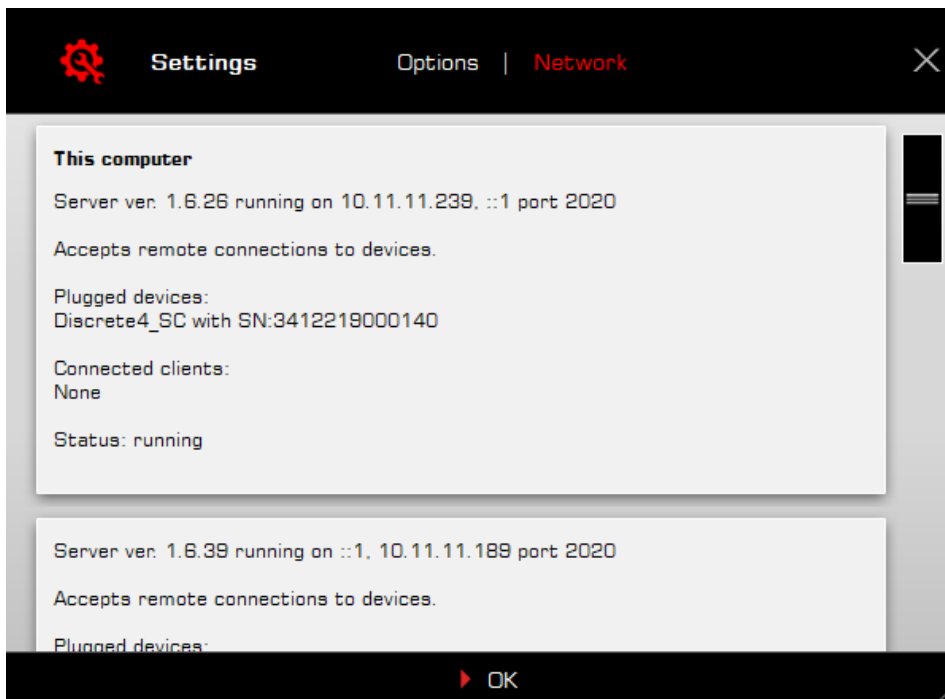


Here, you can do the following:

- Click 'View Logs' to view, save, and send activity logs to Antelope Audio Customer Support.
- Click 'Advanced' to enable or disable automatic updates for each of the following:
 - Device firmware
 - USB Driver
 - Control Panel
 - Effects
 - Thunderbolt™ driver

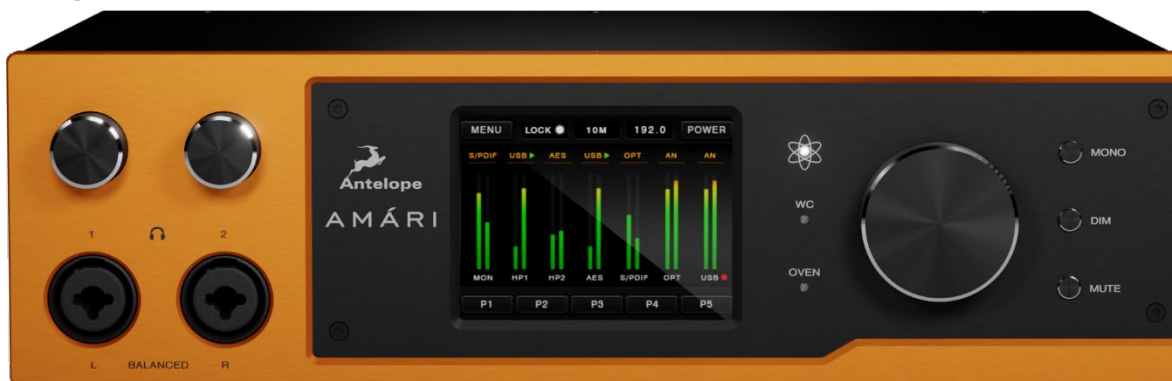
Make your selection(s) in the drop-down menu(s) and click 'OK'.

- Click 'Network' to view network status and logs.





FRONT PANEL EXPLAINED



From left to right, top to bottom:

1. HP1 & HP2 Volume Controls

Volume control knobs for headphone outputs 1 & 2.

2. HP1 & HP2 Inputs

Dual headphone inputs with dedicated amplifiers on combo XLR connectors.

3. Touchscreen

Shows metering, device update information and essential controls. Read chapter '3.1. Touchscreen Explained' for a detailed walkthrough.

4. Atomic Clock Indicator

Lights up when the AMÁRI is connected to an Antelope Audio 10M/10MX Atomic Master Clock.

5. Word Clock Indicator

Lights up when the AMÁRI is connected to an external word clock timing reference generating device.

6. Oven Indicator

Lights up when the AMÁRI is synced to the internal oven-controlled crystal oscillator.

7. Rotary Control

Turn clockwise or counter-clockwise to adjust monitor and headphone output volume (in dB).



8. MONO, DIM & MUTE Buttons

- Press the MONO button to enable and disable mono playback.
- Press the DIM button to attenuate the output volume.
- Press the MUTE button to mute and un-mute playback.

Touchscreen Functionality

From left to right, top to bottom:

1. MENU Button

Tap to access the Main Menu with the following options. Tap, hold, and swipe the menu up and down to scroll. Tap an item to enter or confirm.

Analog In Type

Choose the type of analog input connection – RCA or XLR.

HP Out Impedance

Adjust output impedance for headphone outputs 1 and 2, separately.

Scr Save Style

Choose the screensaver style.

Scr Save Time

Choose how long it takes for the screensaver to appear. We recommend setting the screensaver style to 'Black Scr.' and this setting to the shortest possible period you are comfortable with to prevent screen burn-in.

SR Conversion

Enable and disable S/PDIF sample rate conversion. E.g. if your S/PDIF input is at 48kHz and AMÁRI is set to 96kHz, incoming S/PDIF audio will be automatically converted to 96kHz.

Presets Saving

Save the current settings to preset slots 1 – 5. Use the P1 – P5 buttons from the bottom row to recall presets 1 – 5.



Factory Reset

Restore AMÁRI to default settings. Note that all presets will be lost.

10M Calibration

Calibrate an Antelope Audio Atomic Master Clock to work with AMÁRI.

Device Info

View device serial number, hardware and software revision. Useful for troubleshooting.

Touch Scr Calibr

Reset touchscreen calibration. Use this if experiencing any problems with touchscreen input recognition.

Brightness

Adjust display brightness.

2. LOCK Indicator

Lights up when the AMÁRI is locked to an external digital device.

3. Clock Source Selector

Tap this button to choose a clock source from the following options:

- OVEN – internal oven-controlled crystal oscillator.
- WC – external Word Clock generator connected to the Word Clock or 10M inputs.
- AES – device connected over AES/EBU.
- S/PDIF – device connected over S/PDIF.
- TOSLINK – device connected over TOSLINK.
- USB – sync to computer.

4. Sample Rate Selector

Tap this button to choose the device sample rate – from 32kHz to 384kHz.

5. POWER Button

Tap to enter 'Standby'. Disconnect the power supply to power off completely.

6. Input Selectors



Found above each output level meter. Tap to choose the signal source for each particular output.

Available inputs:

- AN – Analog audio from analog inputs L/R.
- USB – Computer audio.
- AES – Incoming AES/EBU audio.
- S/PDIF – Incoming S/PDIF audio.
- OPT – Incoming TOSLINK audio.

Available outputs:

- MON – Main outputs L/R.
- HP1 – Headphone output 1.
- HP2 – Headphone output 2.
- AES – AES/EBU output.
- S/PDIF – S/PDIF output.
- OPT – TOSLINK output.
- USB – Computer audio.

Buttons P1 – P5

Tap to recall presets 1 – 5.



REAR PANEL EXPLAINED



From left to right, top to bottom:

1. Kensington Lock

Lock the device for demonstration rooms and kiosks.

2. WC IN & 10M IN

Word Clock and Atomic Clock inputs on BNC connectors for external word clock reference generators.

3. AES IN

AES/EBU audio input.

4. S/PDIF In / Out

S/PDIF input and output (75ohm) over coaxial RCA cables.

5. TOSLINK In / Out

TOSLINK input and output over optical cables.

6. Analog In L/R (RCA)

RCA inputs for analog audio.

7. Analog In L/R (XLR)

XLR/TS/TRS combo analog audio inputs.

8. AES OUT

AES/EBU audio output on XLR connector.



9. USB 3.0 Type-B

USB 3.0 Type-B port for computer connection.

10. Main Outputs L / R (XLR)

Main analog audio outputs on XLR connectors.

11. Main Outputs L / R (TS/TRS)

Main analog audio outputs on TS/TRS connectors.

12. Power Supply Connector

For use with the provided power supply only!



CONTROL PANEL



Easy and intuitive to use, the AMÁRI Software Control Panel mirrors much of the unit's touchscreen functionality, including flexible control over signal routing.

Mouse & Keyboard Shortcuts

The following features are accessible via mouse & keyboard shortcuts in the Control Panel:

- Return to default value (all knobs and faders):
double-click the knob or fader.
- Change text labels and manually enter gain values:
double-click the text label / gain value.
- Adjust parameter values in smaller increments (all knobs and faders):
Hold Ctrl (Windows) / Command (macOS) and drag.
- Click any peak meter to clear it.



Monitor View



On the very top is the Function Strip, which contains the following menus and controls (left to right):



Power On/Off Button

Turns the unit On or Off.

Clock Source

Chooses the clock source. The following options are available:

OVEN – internal oven-controlled crystal oscillator.

WC – external Word Clock generator connected to the Word Clock or 10M inputs.

AES – device connected over AES/EBU.

S/PDIF – device connected over S/PDIF.

TOSLINK – device connected over TOSLINK.

USB – sync to computer.



Sample Rate

Choose the device sample rate – from 32kHz to 384kHz.

Lock Indicator

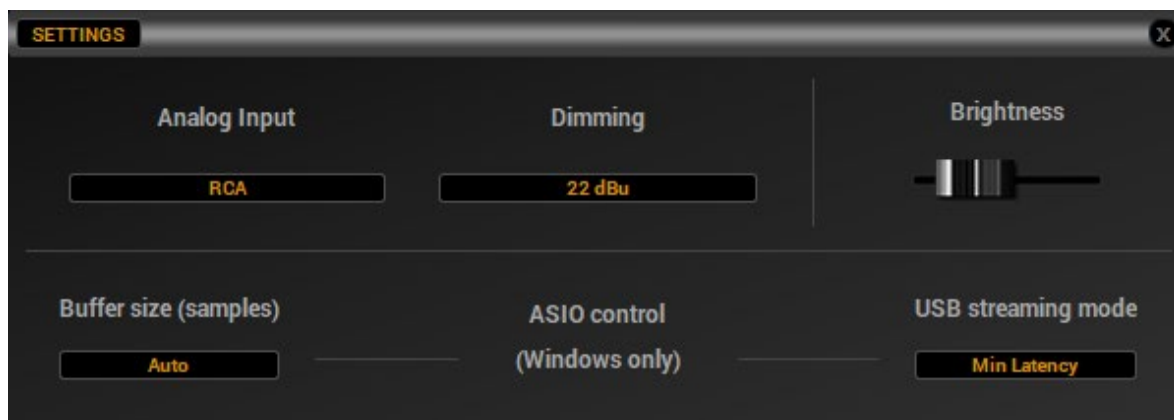
When lit, the unit is locked to an external digital device.

Device Selector

Chooses from connected devices according to their serial number.

Settings Button

Opens the Settings Window:

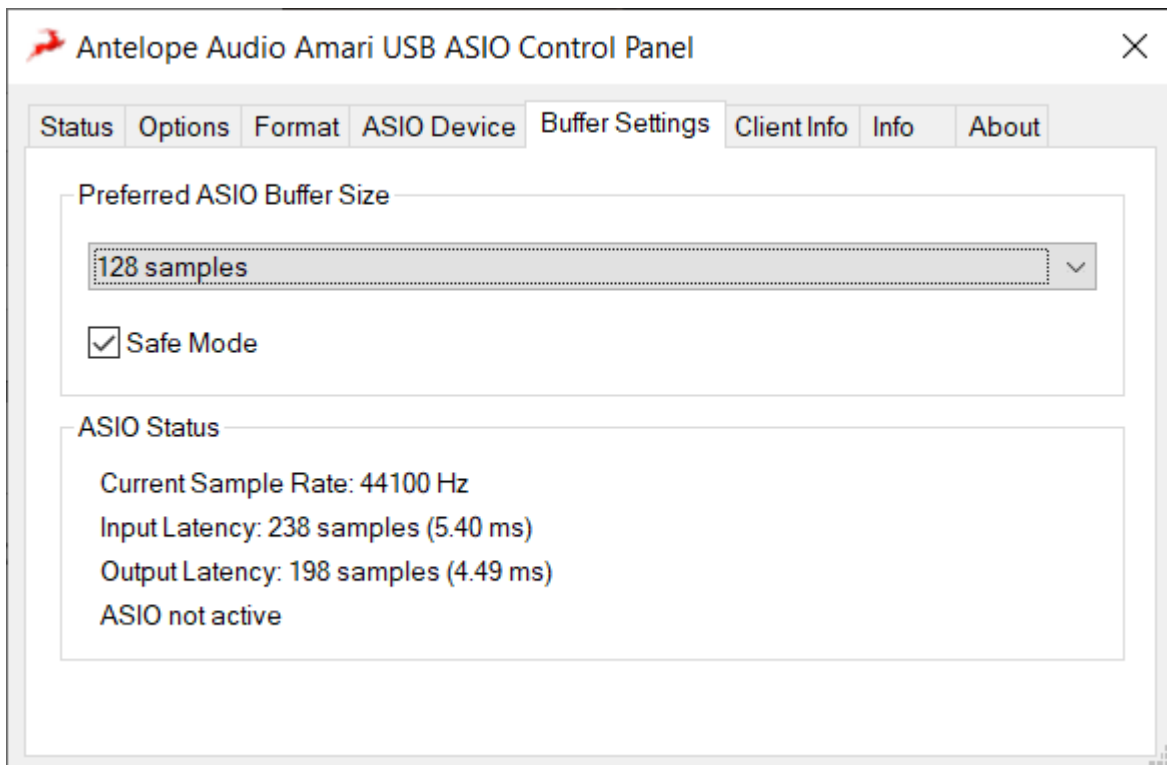


Analog Input - Choose the connection type (RCA/XLR)

Dimming – Choose the dim amount in dBu

Brightness slider – Click and drag to adjust the touchscreen brightness.

ASIO Control – open the USB ASIO Control Panel. You can also do this from the Windows 10 System Tray. Choose ASIO buffer size from the 'Buffer Settings' tab and Streaming mode from the 'Options' tab. Experiment with the two modes if you experience glitches despite setting a reasonable ASIO buffer size.



Minimize Button

Minimizes the Control Panel

Close Button

Closes the Control Panel.

Next follows the Output Selector. Here, you can switch Control Panel views for the AMÁRI's analog and digital outputs.



Below, you see the Source drop-down menu. Choose one of the available input sources to hear from the main outputs. They are as follows:

- ANALOG – Analog audio from analog inputs L/R.
- USB – Computer audio.
- AES – Incoming AES/EBU audio.
- S/PDIF – Incoming S/PDIF audio.
- OPT – Incoming TOSLINK audio.



Next, we have the Balance control knob and level meters for the main outputs' Left and Right channels.



Finally, we have the Gain control knob for the monitor outputs, as well as Mute and Dim toggles directly to its sides.





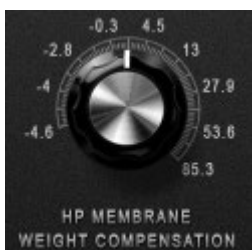
Headphones 1 & Headphones 2



These sections control the Headphone 1 & Headphone 2 outputs of the AMÁRI. They feature identical functionality, except for the balanced output switch and impedance adjustment knob.

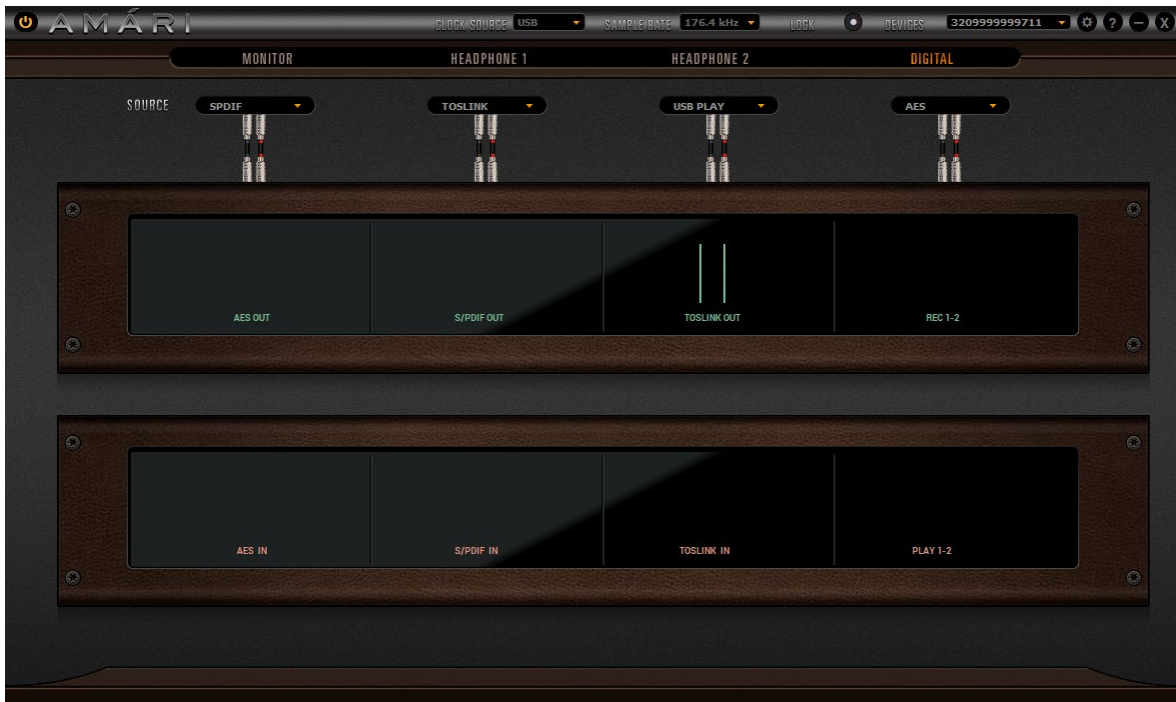


Activate this switch when using a balanced connection to your headphones.





Digital View



This section manages signal routing for the digital inputs and outputs. The audio source for each output can be chosen freely from the drop-down menus. Input and Output level meters are found here as well.



Glossary

Balanced Connection

In contrast to an unbalanced cable, a balanced cable has three conductors in the connector and three wires in the cable: two signal wires and a separate ground wire. The two signal wires carry identical copies of the signal, but one has its polarity reversed. Summing the signals will make them cancel each other out.

Both signal copies pick up the same noise as they travel along the cable, which means noise will get canceled out as well. Balanced inputs make use of this by flipping the polarity of the signal upon receiving it — in such a way that only the noise gets cancelled while the audio signal is preserved. Typically, long cable runs, studio environments and professional audio systems utilize balanced connections for this very reason.

Oven Control

Oscillator accuracy is compromised when exposed to temperature fluctuations. Housing the oscillator in a shielded container, or “Oven” that maintains a constant temperature brings significant benefits to the detail, dynamics, and stereo image of the audio.

Sample Rate & Bit Depth

Once an audio signal is transformed into the digital world, it becomes a small piece of information at a time point. By increasing the sample rate and bit depth, you also increase the pieces of information, thus resulting in a more detailed representation of the original analog signal. Bit depth describes the amount of bits of information for each sample. It is addressed directly to the resolution of each sample in digital audio data.

Atomic Clock

Based on real atomic technology, the Rubidium Atomic Reference Generator is designed specifically to appeal to the most discerning audiophiles and audio professionals. The technology is a staggering 100,000 times more accurate than the quartz oscillators used in most equipment.

Word Clock

A word clock is a clock signal used to synchronise digital audio devices. S/PDIF, AES/EBU, ADAT, and TDIF are some of the popular formats that use a word clock.

Kensington Lock

Used for locking down the device in demonstration rooms.

AES

AES3 (also known as AES/EBU) is a standard for the exchange of digital audio signals between professional audio devices. An AES3 signal can carry two channels of PCM



audio over several transmission media including balanced lines, unbalanced lines, and optical fiber.

S/PDIF (Sony/Philips Digital Interface)

The consumer version of AES3 which uses coaxial cables to carry the audio signal.

TOSLINK (Toshiba Link)

TOSLINK is a standardized optical fiber connector system. Also known generically as an "optical audio cable" or just "optical cable", its most common use is in consumer audio equipment (via a "digital optical" socket), where it carries a digital audio stream.



CUSTOMER SUPPORT INFORMATION

Antelope Audio Customer Support can be reached by the following means:

Online

Visit support.antelopeaudio.com

Phone

We are there for you around the clock, 21 hours/day, Monday to Friday.

North America +1-916-238-1643 01:00 a.m. – 10:00 p.m. (EST)

International +44 19 2593 3423 06:00 a.m. – 03:00 a.m. (GMT)

Pour le Support francophone: +44 20 3389 8108 09:00 a.m. – 17:30 p.m. (GMT+1)

Live Chat

Live Chat is available during the following hours Monday to Friday

International 06:00 a.m. – 06:00 p.m. (GMT)

Note: If you're trying to reach us outside working hours, we advise you to file a ticket in our customer support system or leave a voice message.

Additional Resources

- The [Antelope Audio YouTube channel](#) is home to various tutorial videos and endorser content which you may find helpful and inspiring.
- The [Antelope Audio Users Facebook group](#) lets you interact with fellow users and some of our employees. Note, however, that it is not meant to be a support group. Please contact our customer support team for such inquiries.
- The [Knowledge Base](#) in our Customer Support section is an often-overlooked source of troubleshooting information, answers to commonly asked questions and Antelope know-how.



MY ANTELOPE AUDIO PRODUCT ISN'T WORKING WHAT SHOULD I DO?

If you can't find a solution on your own, please get in touch with us so we check if you are having a hardware-related issue. If this is the case, we'll guide you through the repair process. If the product should be returned, a RMA number will be issued so we can begin the procedure.

What's an RMA number?

Issuing a RMA (Return Merchandise Authorization) number is required for any factory service or repair procedure. Please, don't attempt to send us your device without receiving a RMA number first, as the device will be returned and not serviced.

How do I get an RMA number?

The Antelope Audio Customer Support team is in charge of issuing RMA numbers. Visit support.antelopeaudio.com and get in touch.

After your RMA has been issued, you will receive an email with instructions on how to proceed.

RMA shipping information

Alongside the product you are returning please, include a letter containing your full name, shipping address, RMA number issued by our technical support team and a note with a short information about the technical issue.

Please use the original box if possible, because a worn out one will surely not protect your product sufficiently on its way to the Antelope Audio HQ. Additional cushioning materials in multiple layers between the unit and the box walls to prevent from shock, vibration and various tears and scratches.

Please remove any labels or old shipment markings it may have and ensure you add your shipping address inside the box in case the original shipment label becomes illegible during transportation.

The shipping costs are covered by the owner of the product. Antelope Audio will not cover any local customs charges.

We recommend using a courier service of your choice (e.g. DHL, UPS, FedEx). The package should be insured for its real value, marked as fragile and a tracking number should be provided. We do not recommend using standard mail delivery services.

Please, don't forget to add the RMA number, issued by the Antelope Audio technical support, on all shipping paperwork.



Antelope Audio cannot be held responsible for undelivered packages – lost or damaged on the way to the Antelope Audio HQ. For damage claims, please contact your shipping service provider of choice.

Antelope Audio cannot cover any repair costs for product damages due to poor packaging.

LIMITED WARRANTY POLICY

This is a non-transferable voluntary Limited Product Warranty provided to end-customers who have purchased Antelope Audio-branded hardware product (hereinafter referred to as “Product”) from an authorized Antelope Audio re-seller.

For customers covered by consumer protection laws or regulations in their country of purchase or, if different, their country of residence, the benefits conferred by Antelope Audio's Limited Warranty are in addition to, and not instead of, rights and remedies convened by such consumer protection laws and regulations and it does not exclude, limit or suspend buyer's rights arising from consumer law. Consumers have the right to choose whether to claim service under the Antelope Audio Limited Warranty or under their consumer law rights.

All claims made under the Antelope Audio Limited Warranty will be governed by the terms set out in this warranty document.

Warranty Coverage

Antelope Audio warrants that the Product will be free from defects in material and workmanship for the period of 1 (one) year commencing on the date of purchase of Product by end-customer from authorized Antelope Audio's re-seller.

Except where explicitly prohibited by applicable local law, this warranty is limited to the original purchaser and is non-transferable. This warranty provides you with specific legal rights, and you may have additional rights that vary under local laws.

In general, this warranty means your Antelope Audio hardware product will operate in accordance with published technical specifications, as specified by its data-sheet, and in the operating environment for which it was intended for the length of the warranty period.

This version of the warranty applies to products purchased on or after January 1, 2018. For prior versions of the Antelope Audio limited warranty, please contact customer service.

Limited Factory Refurbished (B-stock) Warranty



Antelope Audio warrants products sold as “B-stock, Factory Refurbished or Open Box” to be free from defects in materials (unless otherwise stated in product description) and workmanship. Only products purchased from an authorized dealer or directly from Antelope Audio are covered by this Warranty.

The Limited Factory Refurbished (B-stock) Warranty is valid for the period of 6 (six) months, commencing on the date of purchase of Product, if local regulations do not require otherwise.

All warranty terms contained hereunder apply also to the B-stock Warranty, unless otherwise specified.

Remedies

Antelope Audio’s entire liability and your exclusive remedy for any Antelope Audio Product that is not operating in accordance with its published technical specifications is at Antelope Audio’s discretion:

- 1) to repair the Product at Antelope Audio’s expense using new or equivalent-to new refurbished parts in good working condition; or
- 2) to replace the Product at Antelope Audio’s expense with a product with equivalent functionality formed from new and/or equivalent-to new refurbished parts in good working condition, or
- 3) to refund the price paid. Should Antelope Audio decide to refund the price paid, it may deduct from the paid Product’s price any damages caused to the Product; where, within fourteen (14) days of the expiration of the warranty period,(i) Antelope Audio has received written notice of any nonconformity;(ii) after Antelope Audio’s written authorization, customer has returned the nonconforming product to the designated place; and (iii)Antelope Audio has determined that the Product is nonconforming and that such non conformity is not the result of any of the exclusions designated below.

These warranty obligations are conditioned upon the hardware being returned to the original place of purchase, or another place as directed by Antelope Audio, with the original sales receipt attached. You will be required to pay shipping and handling charges for returning the product. You may be required to pay any other applicable tariffs, duties, taxes, or other fees with regard to returning the products.

Any repaired or replacement Product will be warranted for the remainder of the original warranty period.

Obsolete or Discontinued Products

An obsolete or discontinued product will be repaired or replaced with the same product if available. If Antelope Audio is unable to replace your obsolete or discontinued product



with the same product, Antelope Audio will replace the obsolete or discontinued product, in its sole discretion, with a product having similar function and capacity.

Exclusions

This warranty does not cover problems or damage resulting from, but not limited to, any of the following: (i)Wear and tear associated with normal use; (ii)Any modification, abuse, accident, disassembly, misapplication, misuse, negligence, acts of God, accident; (iii)Unauthorized repair or attempted repair by anyone other than Antelope Audio or someone authorized by Antelope Audio to do warranty work; any unauthorized repairs will void this warranty(iv)Any improper operation, maintenance or installation, including any use not in accordance with any supplied product instructions; (v)Connection to any improper voltage supply; (vi)Use of consumables or spare parts not supplied by Antelope Audio, except where such restriction is prohibited by applicable local law; (vii)Any other cause which does not relate to a Product defect in materials or workmanship.

The warranty does not apply to any Products which have been subject to misuse, neglect, accident or modification or which have been soldered or altered such that they are not capable of being tested under normal test conditions.

This warranty does not cover (i) any counterfeit products, i.e. Products that Antelope Audio, at its sole discretion, determines were not manufactured by Antelope Audio or any of its authorized manufacturing partners; (ii) Products purchased from a person or entity which is not an authorized dealer or re-seller of Antelope Audio; (iii)Product sold “as is” or “with all faults”, to the extend permitted by local law.

This warranty is not valid in case any manufacturer label(s), serial numbers, date stamp(s) or warranty sticker(s) has been altered or removed from the Product.

Limitation of Liability

ANTELOPE AUDIO SHALL NOT BE LIABLE FOR ANY SPECIAL, INCIDENTAL, INDIRECT, OR CONSEQUENTIAL DAMAGES WHATSOEVER, INCLUDING BUT NOT LIMITED TO LOSS OF PROFITS, REVENUE, OR DATA (WHETHER DIRECT OR INDIRECT) OR COMMERCIAL LOSS FOR BREACH OF ANY EXPRESS OR IMPLIED WARRANTY ON YOUR PRODUCT EVEN IF Antelope Audio HAS BEEN ADVISED PREVIOUSLY OF THE POSSIBILITY OF SUCH DAMAGES. Some local laws do not allow the exclusion or limitation of special, indirect, incidental or consequential damages, so this limitation or exclusion may not apply in your jurisdiction.

ANTELOPE AUDIO WILL NOT ASSUME OR AUTHORIZE ANY OTHER PERSON TO ASSUME FOR IT ANY OTHER LIABILITY IN CONNECTION WITH ITS PRODUCTS.

Data Recovery

In the event of data loss using Antelope Audio storage devices, Antelope Audio is not responsible for backing up or recovering any data that you may have lost.



No Other Warranties

No Antelope Audio employee, dealer, re-seller, or other agent is authorized to make any modification, extension, or addition to this warranty.

How to Make a Warranty Claim

Valid warranty claims should be processed through your point of purchase. Please also verify the return policy directly with the retailer where you purchased your product. Any warranty claims that cannot be reprocessed through your original point of purchase should be addressed directly to Antelope Audio. Our customer service contact information can be found on the web or in the documentation included with your Product.

Returning Your Product

In the event that you need to return your Antelope Audio products for repair or replacement, Antelope Audio will provide you with a Return Merchandise Authorization Number (RMA#) as well as return instructions. Do not return your product without prior approval from Antelope Audio. Any product returned without a valid unique RMA# will be refused and returned to the sender at the sender's expense. To avoid problems at the time of receipt, clearly write your RMA# on the outside of the package and include a copy of your RMA confirmation-mail within the package.

In certain situations, for in-warranty units, we may (entirely at our opinion) offer you a temporary replacement unit, provided that we have such on stock in your state. To request a temporary replacement unit, a valid credit card must be provided to secure the new replacement unit for shipping prior to Antelope Audio receiving the defective one.

Request a Return Material Authorization Number (RMA#)

Please follow these steps to obtain an RMA number:

(i) For end user customers, submit a claim online at: support.antelopeaudio.com. For business to business (B2B) / Direct customers of Antelope Audio please email us at techsupport@antelopeaudio.com

(ii) A valid proof of purchase is required for RMA processing (i.e. receipt, invoice, etc). Antelope Audio will provide you with the RMA number within 2 working days as of the claim submission date.

RMA Return Addresses

We have multiple RMA receiving locations worldwide. Your RMA confirmation will specify the specific return address you must use when sending your RMA package. Any packages received at an unauthorized location may be refused and returned to the sender at the sender's expense.



Products Lost or Damaged During Transit

The original packaging material should be used to pack the product for return; if the original packaging is not available, you should use such materials that provide the same or greater protection to the product. All packages that arrive with any external damage or appear inadequately packed will be refused and returned to the sender at the sender's expense. We are not responsible for damage incurred during shipping to our RMA receiving locations or for lost or stolen products.

Company information

Antelope Audio is the trade name, under which the company Elektrosfera Ltd., registered under the legislation of the Republic of Bulgaria with UIN: 131052590, is doing business and is worldwide known. Elsewhere in this document where the trade name **Antelope Audio** is used shall refer to Elektrosfera Ltd., with address of management: Tsarigradsko Shose Blvd., 7th km, Building of BIC IZOT, floor 6, Mladost region, Sofia, Bulgaria.

If any term hereunder is held to be illegal or unenforceable, it shall be severed from this warranty and the legality or enforce ability of the remaining terms shall not be affected.

SAFETY NOTES

To reduce the risk of electrical shocks, fire, and related hazards:

- Do not remove screws, cover, or cabinet. There are no user serviceable parts inside.
Refer servicing to qualified service personnel.
- Do not expose this device to rain, moisture or spillover of liquid of any kind.
- Should any form of liquid or a foreign object enter the device, do not use it. Switch off the device and then unplug it from the power source. Do not operate the device again until the foreign object is removed or the liquid has completely dried and its residues fully cleaned up. If in doubt, please consult the manufacturer.
- Do not handle the power cables with wet hands!
- Make sure the device is switched off when plugging/unplugging it to/from the power source.
- Avoid placing things on the cabinet or using the device in a narrow and poorly ventilated place which could affect its operation or the operation of other closely located components.



- If anything goes wrong, turn off the device first and then unplug the power. Do not attempt to repair the device yourself. Consult authorized service personnel or your dealer instead.
- Do not install near any heat sources such as radiators, stoves, or other apparatus (including amplifiers) that produce heat.
- Do not use harsh chemicals to clean your unit. Clean only with specialized cleaners for electronics equipment.
- Connect all your devices before powering your unit.
- This unit is connected via its power cord to the mains safety earth.
- Never operate the unit without this earth connection.
- DC power supply cable should be routed so that it is not likely to be walked on or squeezed by items placed upon or against it.
- To completely turn off the device, unplug the power cable first from the outlet and then from the rear panel of the unit.
- Both occasional and continued exposure to high sound pressure levels can cause permanent ear damage via headphones and monitors.
- Your unit should always be un-racked when traveling or in a flight case.
- The device is designed to operate in a temperate environment, with a correct Operating Temperature of 0-50° C, 32-122° F.



Technical Specifications

Analog Inputs	1x Stereo pair either or balanced Combo XLR (24dBu max input level) or unbalanced RCA (8,2dBu / 6dBv max input level)
Analog Outputs	<p>1x Stereo Pair balanced either on XLR or TRS. Output Level: 24dBu max (XLR) and 18dBu max (TRS), digital trim available</p> <p>2x Stereo Headphone outs on ComboXLR with individual volume control knobs. Output Power: 1,4 Watts max.</p> <p>Adjustable output impedance from -4.6 to 85.3 Ohm available in 17 discrete steps.</p> <p>Note: Headphone outputs are also configurable to drive 1 pair fully balanced headphone set with dedicated volume control</p>
Sync Inputs	1x Word Clock 1x Atomic 10M
A/D Conversion	2x AK5778 A/D Converter chips 24 bit 384kHz Fully Differential Inputs S (N+D): 112 dB S/N: 124 dB Dynamic Range: 128dB
D/A Converters	8x CS43198 D/A Converter chips 24-bit 384kHz *DSD over PCM playback is not currently supported. Dynamic Range: 138dB
Digital Inputs	1x AES/EBU up to 192kHz 1x S/PDIF up to 192kHz 1x TOSLINK up to 96kHz
Digital Outputs	1x AES/EBU up to 192kHz 1x S/PDIF up to 192kHz 1x TOSLINK up to 96kHz
USB 3.1 I/O	USB 3.1 Type-B connector
Clocking System	4th Generation Acoustically Focused Clocking 64-bit DDS Oven-controlled crystal oscillator



Clock Stability	<+/-0.02 ppm, oven controlled at 64.5°C/ 148.1°F
Clock Aging	< 1 ppm per year
Clock Calibration	< +/-0.001 ppm
Sample Rates (kHz)	32, 44.1, 48, 88.2, 96, 176.4, 192, 352, 384