

Think GAIA
For Life and the Earth

SANYO

Ultra Portable Multimedia
Projector

PDG-DSU20N/ E/ B

Compact B5 Size and Easy
Setup Make this Ideal for
Mobile Presentations



Brightness of 2,000 lumens
Contrast 2,000:1

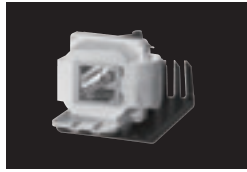


Outstanding Contrast Ratio – 2,000:1

The PDG-DSU20 contains DMD panel with high-contrast optical system that achieves a contrast ratio as high as 2,000:1, exhibiting natural and smooth gradation.

Bright Images Even In a Well-Lit Room

The PDG-DSU20 use a 180-watt UHP lamp for outstanding brightness and well-balanced color reproduction. The PDG-DSU20 provides 2,000 lumens brightness.



Light Weight and Compactness for Greater Portability

The compact design (271.0x 80.3x 223.0 mm) and lightweight body (2.5 kg) let you make presentations almost anywhere.

Auto Input Search

Searches, finds and displays incoming source signal automatically.

Digital Keystone Correction

To compensate for keystone (trapezoidal) picture distortion, the PDG-DSU20 provides vertical keystone correction with a correction range up to 15 degrees.

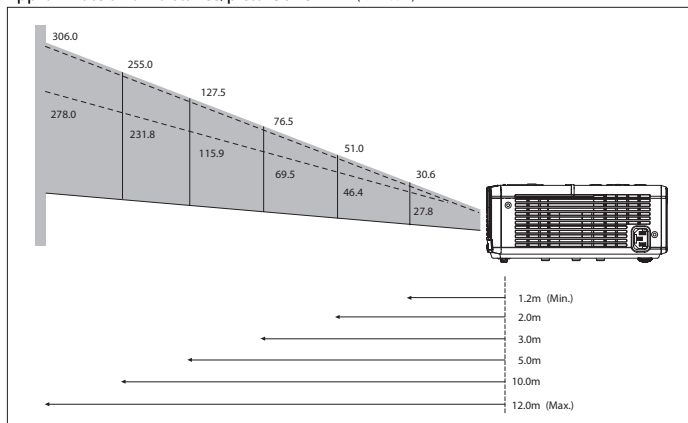


Note: On-screen image size after correction is smaller than that of original. Correction range varies depending on operation settings such as lens shift ratio, lens zoom magnification and so on.

Terminals



Approximate throw distance/picture size (1.1x zoom)



Screen Size (W x H) mm	40"	100"	150"	200"	300"
4 : 3 aspect ratio	813 x 610	2032 x 1524	3048 x 2286	4064 x 3048	6095 x 4572
Zoom (min)	1.7 m	4.3 m	6.5 m	8.6 m	—
Zoom (max)	1.6 m	3.9 m	5.9 m	7.8 m	12.0 m

Approximate throw distances shown above were calculated based on lens design specifications. Please note that up to 5% deviation may occur due to lens variation.

DLP® and the DLP logo are registered trademarks of Texas Instruments.

<http://www.sanyo-lcdp.com/english/>

Caution: Please consult the instruction manual to ensure safe and proper operation of the product.

Distributed by:

Specifications

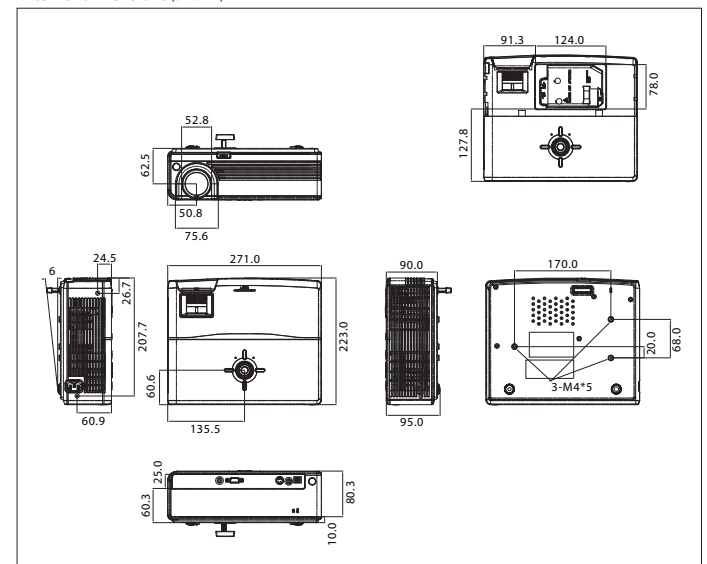
Model name	PDG-DSU20N/ E/ B
Display type	0.55 inch DMD 1 chip (DarkChip1), DDP 2230 type X
No. of pixels	480,000 (800 x 600 dots)
Color Wheel	5 Segment (R/ Y/ G/ W/ B)
Projection lamp	180W UHP (180/ 150W)
Brightness	2000 lumens
Contrast	2000 : 1
Uniformity	80 %
Projection lens	F 2.51 - 2.69, f= 21.95 - 24.18 mm
Screen size	30" - 300" 1.2 wide - 12 (m) 100" at 3.9 - 4.3 m
Zoom/ Focus	Manual x 1.1 U : D= 13.3 : -1
Color systems	PAL/ SECAM/ NTSC/ NTSC 4.43/ PAL-M/ N
HDTV	480i, 480p, 576i, 576p, 720p, 1080i
Video Signal	Composite, (RCA) S-Video (mini DIN)
Computer compatibility	SVGA/ XGA/ SVGA/ VGA
Computer Terminal	D-sub15 pin for Input
Audio	Mini-Jack for Input
Communication Terminal	USB-B type
Other Feature	Keystone +/- 15 degrees, pointer, Page ↑↓ Auto Input Search, D.Zoom, Freeze, No show
Scanning frequency	Horizontal : 31 KHz - 79 KHz Vertical : 50 Hz - 85 Hz Dot clock : 25 - 135MHz
Sound output	2W Mono
Voltage	100 V-240 V AC (auto voltage) 50 - 60 Hz
Power consumption	230 W (7 W)
Dimensions (W x H x D)	271.0 x 80.3 x 223.0 mm (not including protrusion)
Weight	2.5 kg
Fan Noise	Eco 32 dBA
Including accessories	· Lens cap & strap · AC Power Card · VGA Cable · Remote Control with Battery (CR2025) · Owner's Manual · Quick Start Guide

* Replacement Lamp Type No. : POA-LMP118 (JFA)

Option

- Soft carrying bag POA-CAC-VCL2
- Component D-sub cable POA-CA-COMPVGA

External dimensions (unit:mm)



All products manufactured by the Projector Integrated Business Unit of SANYO's DI Company employ a quality management system that has undergone the inspection and registration process of the ISO 9001:2000 international standard.



SANYO's DI Company has received ISO 14001 certification for the environmental management system used in its factory.

SANYO

SANYO Electric Co., Ltd.
DI company