

Connect another mic cable between the phantom power supply output and a mixer mic input. Or, if the mixer has phantom power built in, simply plug the mic cable into a mixer mic input connector, with phantom power switched on.

5. If mechanical noise or breath pops are excessive, use a pen or pencil to set the flat/low-cut switch in the electronics housing to "cut" (↙). Push the switch up to enable low cut.

6. Do not lubricate the gooseneck.

Architects' and Engineers Specifications'

The microphone shall be the Crown model LM-301A or equivalent. The microphone shall be a supercardioid electret-condenser type with dual silent goosenecks. Electronics and connector for the microphone shall be in a separate rugged steel cylindrical housing. A flat/low-cut switch shall be built into the electronics housing. A TA3F connector at the end

of the mic cable shall connect to the electronics. The microphone shall have a built-in 5/8"-27 threaded collar that screws onto a mic stand, mic boom or Atlas AD-12 male flange. The cable can be routed either outside or inside the mounting device.

The microphone shall be powered from 12 to 48 volts phantom powering. Frequency response shall be uniform from 80 Hz to 15,000 Hz. Open-circuit sensitivity shall be 6 mV/Pa. Impedance shall be 150 ohms balanced.

Maximum SPL capability shall be 120 dB SPL at 3% THD. Equivalent noise shall be 28 dBA typical (0 dB = .0002 dyne/cm²).

The Crown Model LM-301A microphone is specified.

Warranty

Crown professional microphones are guaranteed unconditionally against malfunction

from any cause for a period of three years from date of original purchase. See enclosed warranty sheet for additional information.

Service

If the unit fails to work, first replace or repair the mic cables and check the power supply. If service is required, return the microphone in its original packaging to Crown Service Department, Plant 2 SW, 1718 West Mishawaka Road, Elkhart, IN 46517. For further assistance or technical support call 800-342-6939.

Fig. 3

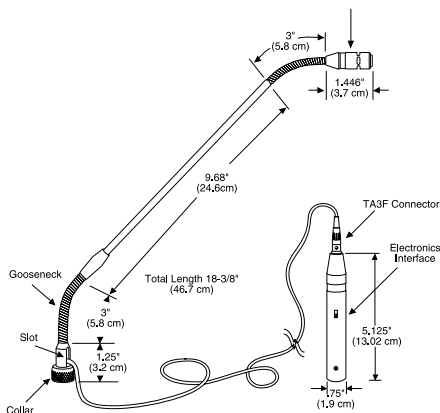
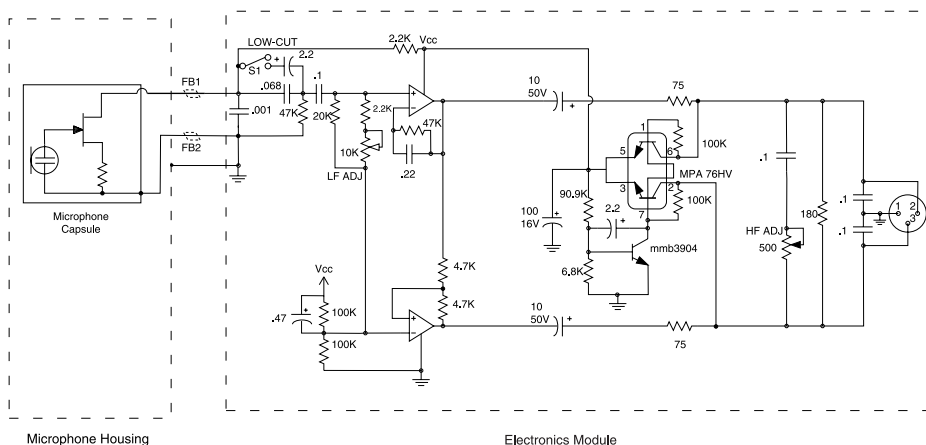
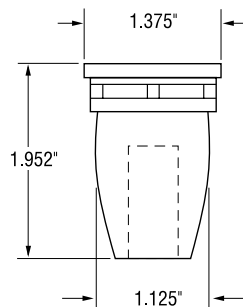


Fig. 4



CM-30/CM-30W Schematic



Crown International, Inc.
P.O. Box 1000
Elkhart, IN 46515-1000
TEL: 219-294-8000
FAX: 219-294-8FAX

©1997 Crown International, Inc.
Specifications subject to change without prior notice.
Crown® is a registered trademark of Crown International, Inc.

LM-301A

The Crown LM-301A is a supercardioid, electret condenser, miniature dual gooseneck microphone. It was designed for professional use on lecterns and for inconspicuous miking of musical instruments. The LM-301A comes in two parts: microphone/cable and cylindrical electronics housing.

The microphone has a built-in 5/8"-27 threaded collar that can be screwed onto a mic stand, mic boom or an Atlas AD-12 male flange. Because of the unique design of the mounting collar, the mic cable can be routed either outside or inside the mounting collar.

Because of its supercardioid pickup pattern, the LM-301A rejects more background noise, room reverberation, and feedback than a typical cardioid microphone.

The LM-301A has a smooth, wide-range frequency response for natural reproduction of the singing or speaking voice. Very low frequencies are filtered out to reduce pickup of mechanically induced noise, room rumble, etc. The gooseneck adjusts silently.

Supplied with the microphone is the WS-9 highly effective foam pop filter. Its two-stage design greatly reduces explosive breath sounds. A low-cut switch built into the electronics housing further reduces breath pops and handling noise. Optional accessories include the LM-300WS theft-proof metal windscreen.

The microphone output at its XLR-type male connector is balanced, low impedance, which allows long cable runs without hum pickup or high-frequency loss. Superior RFI protection is also provided.

Operating Instructions

Please refer to Fig. 3 to identify the parts mentioned.

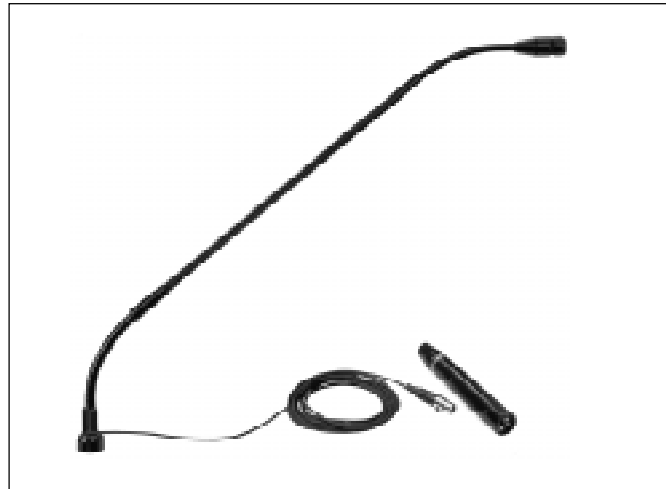
1. To route the mic cable inside the mounting device: remove the TA3F connector, push the collar up onto the gooseneck and pull the cable down through the collar. Reattach TA3F.

2. To route the mic cable outside the mounting device: remove the TA3F connector, push the collar up onto the gooseneck, route the end of the cable inside the collar and slot and pull the cable up through the collar and slot. Reattach TA3F.

3. Plug the electronics interface into an XLR-type female connector.

4. Near the mixer, plug the mic cable from the lectern into a phantom power supply input.

SUPERCARDIOID CONDENSER DUAL GOOSENECK LECTERN MICROPHONE



Specifications

Type: Unidirectional condenser.

Element: Electret condenser.

Frequency response (typical): 80 Hz to 15,000 Hz (110 Hz to 15,000 Hz with low cut). See Fig. 1.

Polar pattern: Supercardioid. See Fig. 2.

Impedance: 150 ohms, balanced. Recommended minimum load impedance 1000 ohms.

Open-circuit sensitivity: 6 mV/Pa* (-44.5 dB re 1 V/Pa*).

Power sensitivity: -42 dB re 1 mW/Pa*.

Equivalent noise level: 28 dB SPL typical (0 dB = .0002 dyne/cm²), A-weighted.

S/N ratio: 66 dB at 94 dB SPL.

Maximum SPL: 120 dB SPL produces 3% THD.

Polarity: Positive pressure on the diaphragm produces a positive voltage on pin 2 with respect to pin 3 of the output connector.

Operating voltage: Phantom power, 12 to 48 volts DC, positive voltage on pins 2 and 3 with respect to pin 1 of the output connector.

Current drain: 3.5 mA.

Cable: 10' 2-conductor shielded 0.1" diameter cable integral to microphone terminated with Switchcraft TA3F.

Connectors: Switchcraft TA3F on mic cable, TB3M and XLRM in electronics interface.

Materials: Steel housing and gooseneck.

Finish: Black.

Weight: 5.5 ounces (159 grams).

Dimensions: See Fig. 3 on reverse side.

Included accessories: WS-9 foam pop filter, part no. M46170-3 (Fig. 4).

Optional accessories: WS-5 foam windscreen, part no. D 7403-5, LM-300WS metal windscreen, PH-4B phantom power supply (4 channels, AC powered), PH-1A phantom power supply (1 channel, battery or AC adaptor powered), PS-24 24V DC power supply for PH-1A.

*1 pascal = 10 microbars = 10 dynes/cm² = 94 dB SPL.

Fig. 1

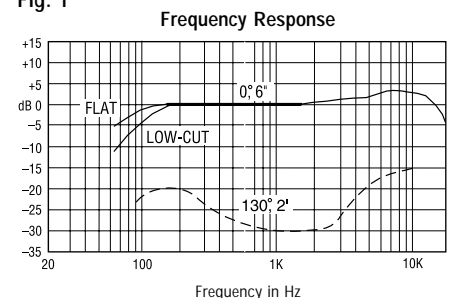


Fig. 2

