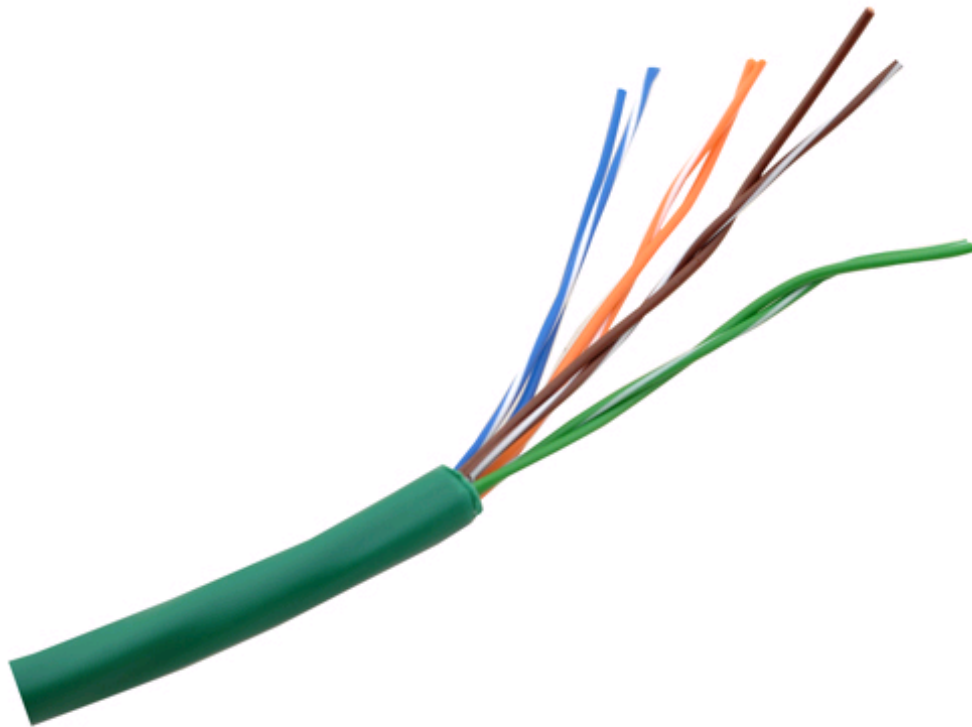


BC-XTP**PIICO SKEW CAT5 CABLE**

Kramer's BC-XTP is UTP unshielded twisted pair cables designed as the ideal companion to Kramer twisted pair transmitter-receiver sets. The BC-XTP resembles typical CAT5e cable, but with internal components optimized for transmission of video/audio signals rather than high speed data. This is accomplished by twisting all four pairs of wire at the same ratio so the actual length of all four pairs is identical. While this configuration renders it unsuitable for high speed data, in a video/audio application each of the RGB color signals now arrive at the destination at the same time. The result is a perfect image at the end of a long run with no color shift or "skew." These flexible cables informally referred to as "Skew Free CAT5," offer high-resolution, long distance transmission of RGB/VGA signals to a variety of display devices. Both cables are constructed using 24 gauge solid copper conductors, and come in standard lengths of 100 and 300 meters (330 feet and 990 feet).

**SPECIFICATIONS****Construction**

CENTER CONDUCTOR:	24 AWG, Solid Bare copper.
JACKET COLORS:	Brown * Brown/ white, Blue * Blue/ white, Orange * Orange/ white, Green * green/ white
OUTER JACKET COLOR:	Green w/white lettering.
OUTER JACKET:	PVC.

Diameters

CENTER CONDUCTOR:	0.041 inches, 0.1mm.
OUTSIDE DIAMETER:	0.22 inches, 5.5mm.

Electrical

ATTENUATION (DB/100 FT.):	-0.6 dB @ 1MHz.
	-2.0 dB @ 10 MHz.
	-6.7 dB @ 100 MHz.
	-8.5 dB @ 155 MHz.
	-9.7 dB @ 200MHz.

CONFIGURATIONS

MODEL	DESCRIPTION	FEET
BCP-XTP-100M	Low Skew CAT5 Cable	328'
BCP-XTP-100M	Low Skew CAT5 Cable	985'

-13.6dB @ 350MHz.
DC RESISTANCE: 30.4Ω per 1000ft, 100Ω per km.
IMPEDANCE: 100Ω
PAIR TO PAIR SKEW: 1.5ns/ 100M
TEMPERATURE: - 4° to 167° Fahrenheit, - 20° to 75° Celsius.

Regulatory

CSA: C(UL) CM, FT4.
ROHS: Compliant in accordance with European directive 2002/95/IEC.
UL: CM.