



LTC-1

Description

Lowell LTC-1 fan thermostat control installs easily into a cabinet or rack to provide temperature-controlled activation of cooling fans. Money-saving accessory allows you to preset the temperature at which fans will automatically turn on to cool equipment. This reduces fan operation time, associated fan noise, and the excessive dirt intake often associated with continuously operated fans.

Assembly includes a UL Listed thermostat with an easy-to-adjust dial that is calibrated in both Fahrenheit and Celsius. Temperature range of the unit is 50 - 90 degrees Fahrenheit (10-32 degrees Celsius). Assembly also includes a thermometer for visual status of cabinet temperature and two indicators that illuminate for easy visual reference of the cooling system's status. Status lights include a **stand-by** indicator that lights when the ambient temperature is below the preset point and an **on** indicator that lights when the ambient temperature exceeds the preset point. The on indicator is a visual reference that power is being applied to the output receptacle and that fans should be in operation.

Note: the stand-by indicator will not light if a fan or other device is not connected to the output receptacle.

Compact assembly may be mounted anywhere inside a rack or cabinet. The chassis measures 10"L x 3"W x 3"D and features a reliable bimetallic thermostat that will operate accurately in a vertical, horizontal, or angled orientation.

The chassis is 22 gauge CRS with a standard 15amp duplex receptacle, plastic thermostat / thermometer housing, and a 6-foot cord with molded plug. Chassis finish is black powder epoxy.

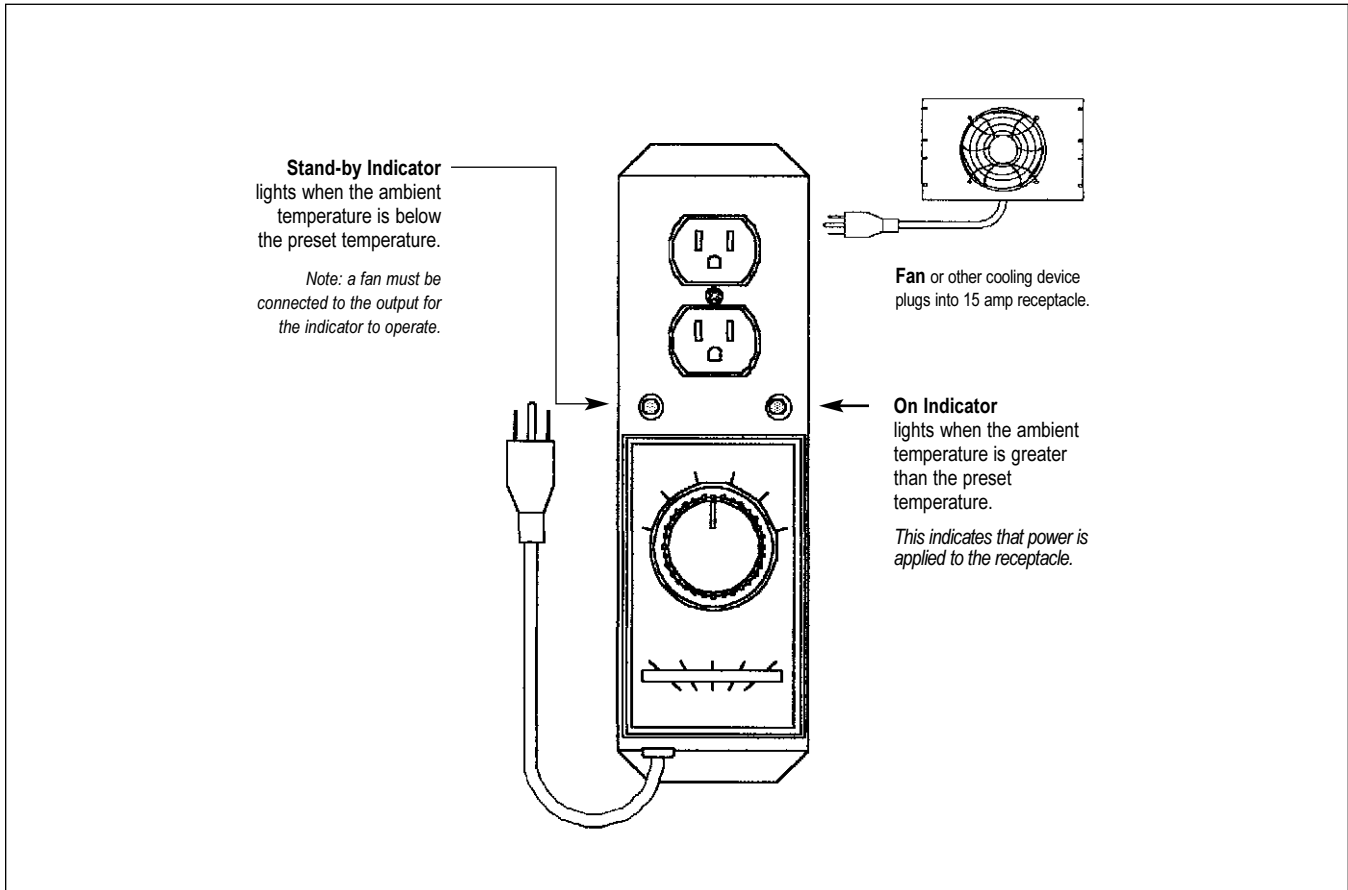
Money saving device may be used with Lowell fan panel assembly Models LWF-195-2, LWF-195-3, LWF-1912, L35-1912. It may also be used with rear door fan Model LWF-RD-2, single fan kit Model LWF-KIT and Blower Model L34-320.

A & E Specifications

The device for temperature controlled activation of cooling fans mounted in electronic equipment cabinets and racks shall be Lowell fan thermostat Model LTC-1. Thermostat control shall have a temperature range of 50 - 90 degrees Fahrenheit (10 - 32 degrees Celsius). It shall include a compact steel chassis, 15 amp duplex receptacle, UL Listed bimetallic thermostat with thermometer, six foot cord with molded plug, and LED indicators for Stand-by and On functions.

LTC-1 Fan Thermostat Control

Model	Power Rating	Outlet Type	Temp Range	Temp Differential	Size	Termination	Weight
LTC-1	15A, 125vac	1 duplex	50 - 90 degrees F. 10 - 30 degrees C.	4 degrees (Aprox.)	10"L x 3"W x 3"H	6 foot cord	2.5lbs.



LTC-1 Functional Diagram

