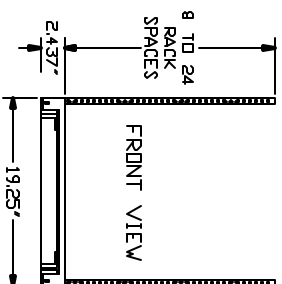
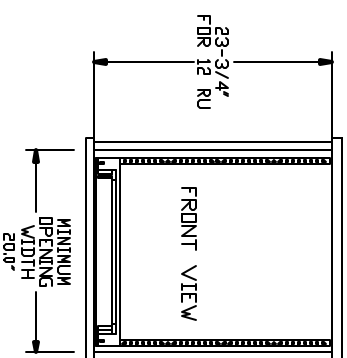


THE RAXXESS ROTR RACK SYSTEM

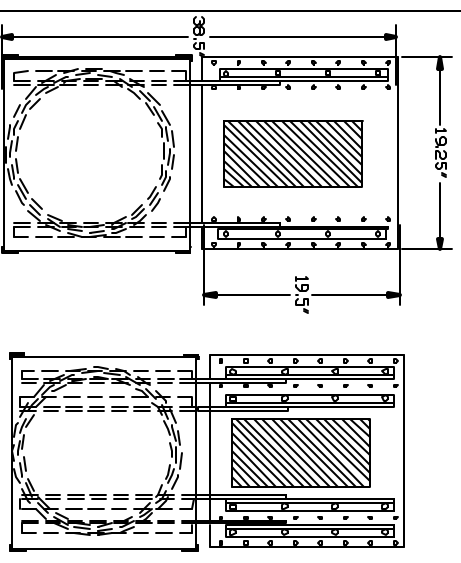


TO CALCULATE HEIGHT, MULTIPLY RACK SPACES BY 1-3/4", THEN ADD 2-3/4".
 FOR EXAMPLE, 12 RU X 1.75=21.0"
 21 + 2-3/4" =23-3/4"
 TOTAL HEIGHT NEEDED FOR 12 RU WOULD BE 23-3/4"

RECOMMENDED OPENING IN MILLWORK OR CABINET.

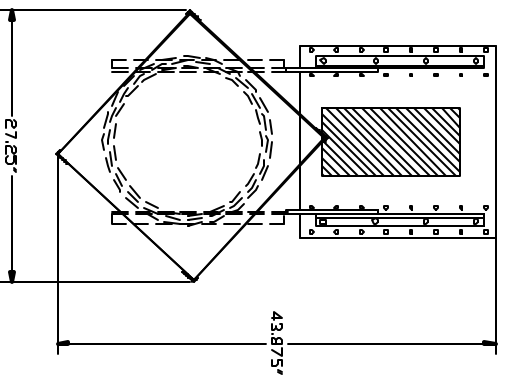


TOP VIEW TOP VIEW ROTR-2 ROTR-4

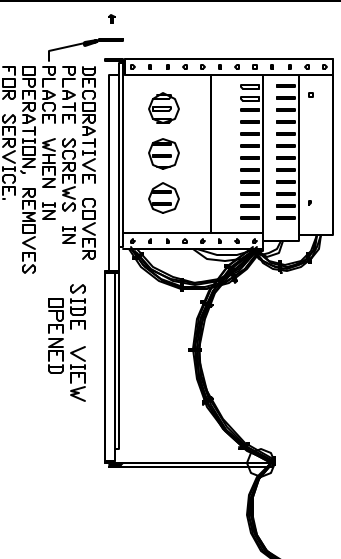
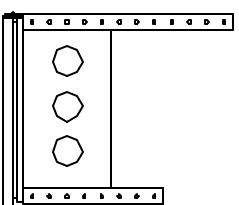


HOLDS 150# HOLDS 300#

PARTIALLY ROTATED POSITION



SIDE VIEW CLOSED



SIDE BY SIDE, BOTH OPENED AT ONCE.

