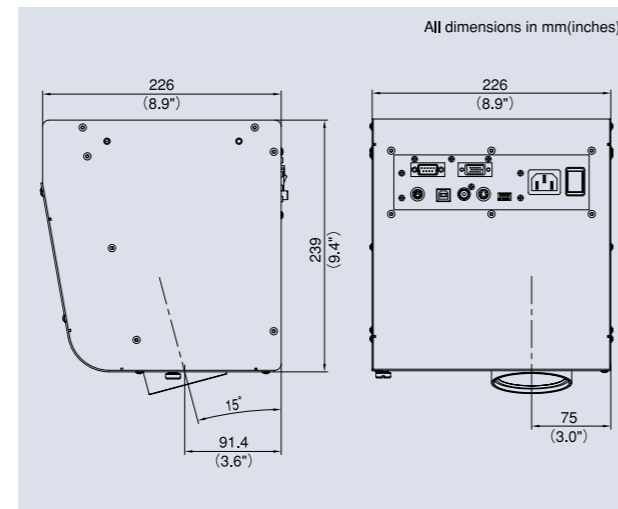


# Ceiling presenter HV-C1000XG

## SPECIFICATIONS

MODEL		HV-C1000XG		
Camera	Image pick-up device	1/3" progressive scan CCD		
	Total pixels	1,077 (H) x 788 (V) , 850,000 pixels		
	Effective pixels	1,034(H) x 779 (V)		
	Frame rate	20 frames / sec.		
	Resolution Analog RGB output	600(H)x600(V) TV lines		
	VIDEO output	400(H) TV lines		
Optics	Zooming	Powered ( with double speed function ) 12x Optical, 2x Digital		
	Lens	F2.6~2.7 f=14.2~170mm (12x Zoom Lens )		
	Shooting area at 2m distance	Max.648x492mm(25.5"x 19.4"), Min.54x41mm(2.1"x1.6")		
	Limit of focus adjustment	Distance from the unit to the text ( object of shooting ) : 1.3m~∞		
	Focusing	Auto / Manual (Powered)		
	Iris	Auto( with level adjustment) / Manual		
	Function	White balance	Full-auto / One-push / Manual	
Nega / Posi conversion		Provided		
Color / B&W selection		Provided		
Aperture selection		Provided		
Pause mode		Provided		
Digital magnification		2x (Can be scrolled)		
Gamma adjustment		Provided (1.0/0.9/0.8/0.7/0.6/0.5/0.4/0.3)		
Image rotation		Provided (0°/90°/180°/270°)		
Arrow video pointer		Provided		
Preset / Move		Provided		
Text mode (contrast)		Provided		
F.A.M. (Frame Accumulate Mode)		Provided		
Sync.system		Internal		
Input / Output		Output terminal	RGB output	MINI DSUB 15P connector, female x1
			Composite video output	RCA pin jack / 75Ω unbalanced ( NTSC / PAL ) x1
	S-video output		MINI DIN 4P connector / 75Ω unbalanced ( NTSC / PAL ) x1	
	Analog RGB output	0.7V (P-P) 75Ω unbalanced, synchronization signal, positive polarity, signal frequency XGA: 48.363kHz(H), 60.004kHz(V) (1,024x 768 @60Hz) compliant with VESA		
PC interface	RS-232C	DSUB 9P connector, male x1		
	Mouse	Mini DIN 6P connector, female x1		
	USB	Type B receptacle x1		
Lighting	Lamp	Halogen lamp 12V50W		
Others	Dimensions (W x D x H)	226x226x239mm (8.9"x8.9"x9.4")		
	Weight	6.5Kgs(14.3lbs) (main body only)		
	Power source	AC100-240V,50/60Hz		

## PROFILE



## ACCESSORIES

Power cord (2.5m) x1
Video cable (RCA pin connector) (3m) x1
S-video cable ( Mini DIN 4P connector ) (2m) x1
Infrared wireless remote controller ( RCW-C1000) x1
Batteries ( Type R03, AAA) x2
Analog RGB cable ( DSUB 15P connector ) (2m) x1
Analog RGB cable ( BNC connector ) (1.8m) x1
Instruction manual x1
Installation manual x1
Warranty card x1
Scroll mouse x1
USB cable ( 1.8m ) x1
Utility Software CD-ROM x1
Utility Software Installation manual x1
C. Mounting fitting x1
Attaching screw (M4 x 10) x3
Attaching screw (M5 x 10) x4

NOTE: Design and specifications are subject to change without previous notice.  
Dimensions and weight are approximate.  
VESA is a registered trademark of Video Electronics Standards Association.  
XGA is a trademark or registered trademark of International Business Machines Corporation.

Shooting distance in m (feet)	Shooting area in mm (inches)	
	TELE	WIDE
1.5 m (4.9')	39:30 (1.5" : 1.2")	485:375 (19.1" : 14.8")
2.0 m (6.5')	53:31 (2.1" : 1.2")	662:511 (26.1" : 20.1")
2.5 m (8.1')	67:52 (2.6" : 2.0")	838:648 (33.0" : 25.5")
3.0 m (9.8')	81:63 (3.2" : 2.5")	1015:784 (40.0" : 30.9")
3.5 m (11.4')	96:74 (3.8" : 2.9")	1192:921 (46.9" : 36.3")
4.0 m (13')	110:85 (4.3" : 3.3")	1369:1057 (53.9" : 41.6")



ELMO is a trademark of ELMO COMPANY, LIMITED.



## ELMO CO., LTD.

6-14, Meizen-cho, Mizuho-ku,  
Nagoya, 467-8567, Japan  
Tel. 81-52-821-3141 Fax. 81-52-811-5243  
E-Mail: foreign-div@elmo.co.jp

Distributed by

Additional technical information is available from any of the following subsidiary companies:

**ELMO USA Corp.**  
1478 Old Country Road  
Plainview, NY 11803-5034, U.S.A.  
Tel. 516-501-1400 Fax. 516-501-0429  
E-mail: elmo@elmousa.com  
Web: http://www.elmousa.com

**ELMO Canada Corp.**  
44 West Drive, Brampton,  
Ontario, L6T 3T6, Canada  
Tel. 905-453-7880 Fax. 905-453-2391  
E-mail: info@elmocanada.com  
Web: http://www.elmocanada.com

**ELMO (Europe) G.m.b.H.**  
Neanderstr 18,  
40233 Düsseldorf, Germany  
Tel. 0211-3864-70 Fax. 0211-376630  
E-mail: info@elmoeurope.com  
Web: http://www.elmoeurope.com



This brochure is printed on recycled paper with soy ink.

E04003 Printed in Japan(A)03/2005

# ELMO

## Ceiling Presenter HV-C1000XG

"So Perfect It's Invisible!"

## HV-C1000XG

Ceiling Presenter  
12xoptical zoom lens + 2xdigital magnification  
XGA Progressive Scan CCD

# Documents Come in Every Form, and this XGA Ultra-Telescopic High-Resolution Presenter handles them All

# Space

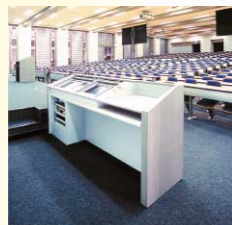
## Open Up Your Vistas

Astonishingly you will now have more free table/desk/podium space. This new unit from ELMO takes you and your associates far beyond the limits of conventional tabletop document cameras.

We've moved the presenter to the ceiling so your workspace is bigger than ever. No more equipment cables trailing across your tabletop/desktop - you can now utilize your new freedom in not only presentations but a wide range of activities.



Conventional design

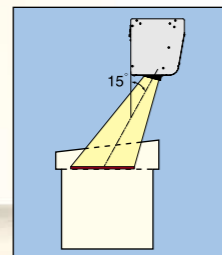


HV-C1000XG

## Compact Design

This new integrated design fits both camera and lighting into a small housing.

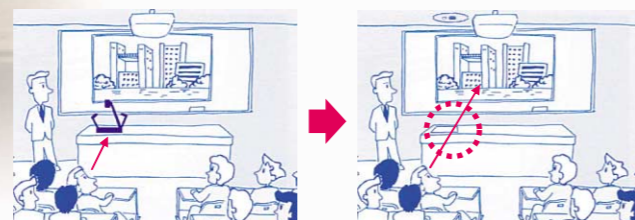
Mounted on the ceiling, it views your presentation material (flat-art or 3D objects of architectural drawings) from a 15 degree offset to your desktop or conference table to eliminate annoying reflections while illuminating the subject material clearly.



Shoots from a 15\* offset

## Clear Field of Vision

With no equipment blocking the line of sight between the presenter and audience, they can all enjoy improved, stress-free communication and achieve greater retention of the material or information displayed on the screen.

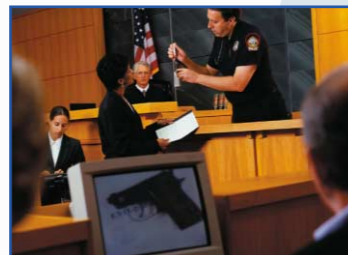


**Scene1  
In the corporate meeting room**  
Can be used to present a prototype effectively.



**Scene2  
In the university lecture room...**  
If a whiteboard is erected in the area covered by the camera, the system can be used not only for photographing paper and 3D objects, but also to easily capture anything written on the whiteboard with a water-based magic marker.

Speakers can proceed with their presentations with more freedom than ever before, without having to return to the blackboard.



**Scene3  
In the courtroom...**  
It's perfect for presenting material evidences.



**Scene4  
At the TV station...**  
Newscasters can display their manuscripts in a monitor located next to the camera, keeping the news program flowing smoothly.



**Scene5  
The City Council Chamber...**  
Council members can view site-maps and blueprints concerning a proposed new shopping center that will require a zoning variance as it is to be located in a residential area.

All members of the community can view the data on a projected display and vote to approve or disapprove the variance.

## Installs Almost Anywhere

The compact, lightweight design can be installed almost anywhere easily, thanks to its small size and ease of installation.

# Quality

## High Quality

Using an 850,000-pixel progressive scan CCD, the HV-C1000XG can deliver high-definition images at XGA resolution (1,024 x 768 pixels).

Our proprietary ELMO image-processing engine (E.I.P.E.) suppresses noise as well as false color artifacts on image profiles when converting the CCD signal to digital, providing accurate color reproduction with a rich and varied range of color.



New image-processing engine

## Ultra-large Imagery at up to 24x Size

For example, at a photographic distance of two meters, you can deliver the same crisp imagery for originals from 594mm x 420mm down to business cards, and all with one-touch auto-focus. The digital magnification delivers another 2x zoom, expanding the range to a truly amazing 24x at your fingertips: the power to handle almost anything.



With a newly-developed high-performance ultra-telescopic 21x power zoom lens, you can show crystal-clear close-ups of tiny objects.

## F.A.M. ( Frame Accumulate Mode ) for Super High-definition Still-Image Capture

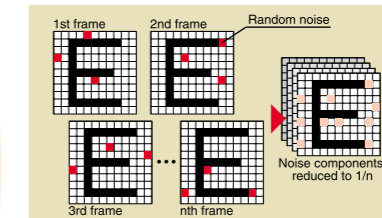
Most documents are viewed in a still-image mode. By accumulating several images of the same document digitally in a fraction of a second, the F.A.M. (Frame Accumulate Mode) instantly reduces any artifacts or roughness within the image due to random noise that occurs in traditional document cameras from other suppliers.



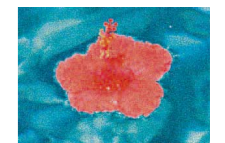
HV-C1000XG



Conventional design



F.A.M. on

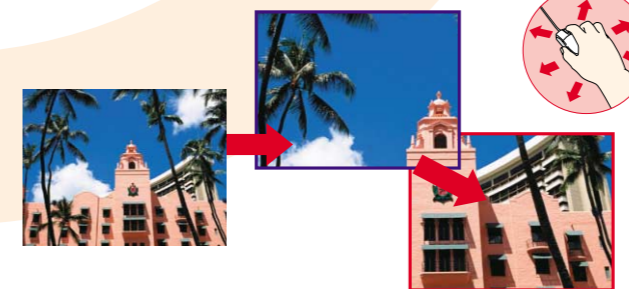


F.A.M. off

# Utility

## Image Enlargement and Scrolling

Enlarge the parts you really want to emphasize with a 2x zoom, and freely scroll the picture horizontally, vertically or even diagonally from anywhere in the room, council chamber or lecture Hall.



## Image Memory

You can save up to eight images in internal memory. This lets you create smooth-flowing presentations by calling up pre-saved materials.

This image memory function can speed-up meetings lectures and council events dramatically. (Turning the presenter off deletes what is in memory.)



## Moving-picture Support

Image capture at 20 frames per second means smooth, easy-to-follow presentations of hand motions or activities, too.



At 20 fps

At 15 fps

## Other Convenient Features

Freeze (Pause)	Aperture Selection	Preset/ Move
Text mode (Contrast)	Color/ B&W selection	Versatile Interfaces
Arrow video pointer	Nega/ Posi Conversion	Computer Connection Kit As Standard Equipment
Gamma Adjustment (8 Levels)	White Balance (Auto/ One-Push/ Manual)	Image Rotation
	On-Screen Display (OSD)	Diverse Control Options