



- DP448 4 Input, 8 Output Audio Management System
- DP446 4 Input, 6 Output Audio Management System
- DP444 4 Input, 4 Output Audio Management System
- DP424 2 Input, 4 Output Audio Management System





- DP448 4 Input, 8 Output Audio Management System
- DP446 4 Input, 6 Output Audio Management System
- DP444 4 Input, 4 Output Audio Management System
- DP424 2 Input, 4 Output Audio Management System



- Two or four inputs, each with gain control, 28-band graphic EQ (choice of responses), 8 filters (each selectable from high/low pass, shelf, parametric, bandpass, allpass, notch, or elliptical), delay.
- Four, six or eight outputs, each with gain control, polarity, delay, high/low pass filtering up to 48dB crossover slopes, up to 9 filters (each selectable from high/low pass, shelf, parametric, bandpass, allpass, notch, or elliptical).
- Matrix any input to any number of outputs, with clear information as to routing, simply by pressing a single input or output EDIT button.
- AES/EBU digital inputs and outputs built-in and easily selectable. Front panel LEDs keep you informed at all times. Plus a Comms LED so you know your network is all connected up and working fine.
- Crossover power – choice of type, and roll-off to 6, 12, 18, 24 or 48dB per octave.
- Two stage RMS and Clip/D-Max limiters available, with look-ahead attack time on the Clip limiter.
- Up to 96kHz internal processing, and sampling rates up to 192kHz accepted at the input stage.
- 116dB dynamic range for unsurpassed headroom.

The most advanced audio management systems available, with XTA sound quality as standard. Whenever powerful control is required, the XTA 4-Series brings matrixing flexibility, 48dB crossover slopes and a host of EQ solutions for every possible problem. Input graphic EQs head up a family that included parametrics, shelves, bandpass, notch and elliptical filtering. Phase on all inputs and outputs is adjustable in 2 degree steps. AES/EBU inputs and outputs are built-in and easily selectable. Plus two

stages of limiting to ensure safety further down the audio chain.

96kHz/24-bit internal processing as standard, or any sampling rate up to this, and the units will accept sampling rates up to 192kHz.

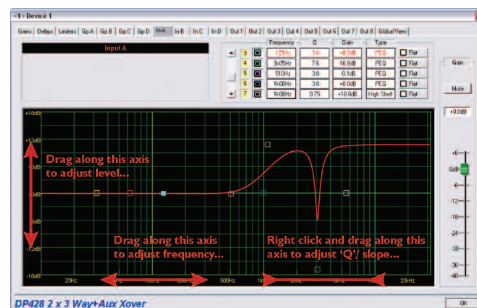
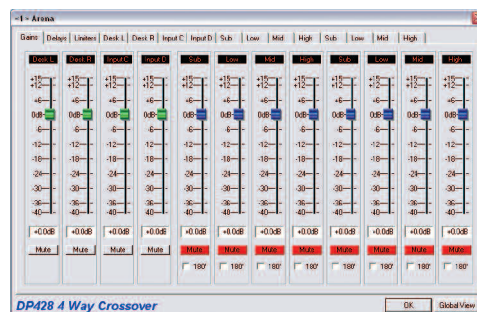
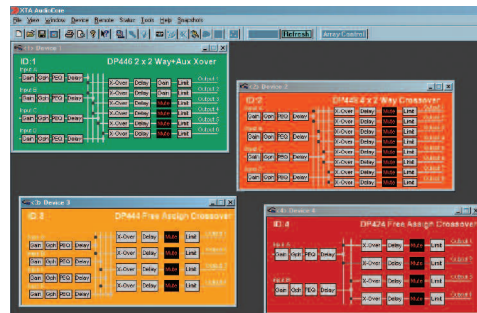
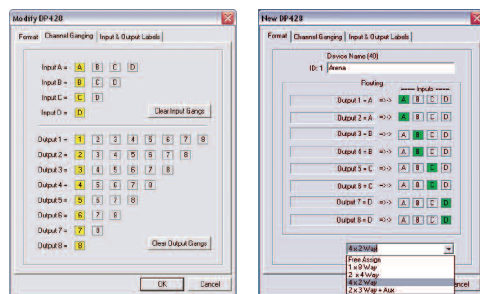
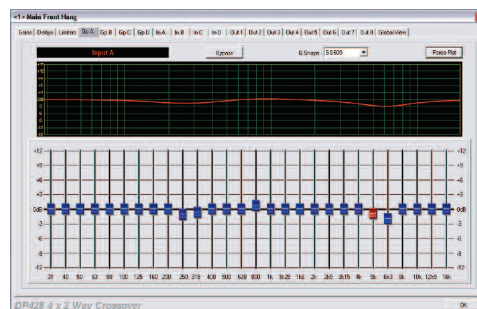
The 4-Series put XTA's transparent algorithms to work in efficient 1U packages that remain easy-to-use and build on the company's "industry-standard" reputation.

Network & Control

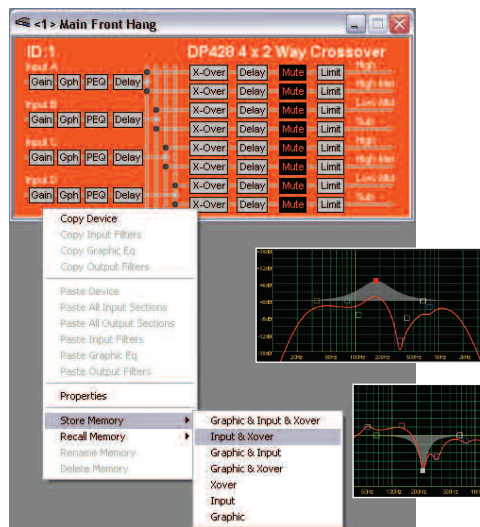
With the increased power and control of the 4-Series matrixing structure, XTA's latest Audiocore PC software program has also moved on. Simple screens enable fast linking of inputs and outputs.

Easy to use "grab" areas of the EQ screen mean fast curve drags (for gain, bandwidth or frequency), even with tablet PCs.

Phantom graphic of any selected curve plus the summed EQ curve overlaid on top. A straightforward network of up to 128 units, easily connected via XLR cabling.



Easy wireless control, with XTA's own Walkabout Kit, gives the possibility of fine-tuning every corner of every venue for great sound.



Visit www.xta.co.uk and download the fully-working version of the software to have a closer look at just how powerful and easy it is to use.



XTA Electronics Ltd, The Design House, Vale Business Park, Worcester Road, Stourport-On-Severn DY13 9BZ, UK
Tel: +44 (0) 1299 879977 Fax: +44 (0) 1299 879969 www.xta.co.uk info@xta.co.uk

XTA is dedicated to providing increasingly improved technology to produce exceptional audio quality