

# Auralex® ProPanels™

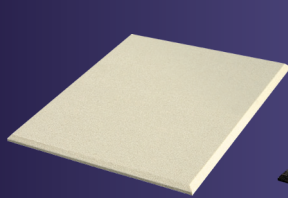


## Fabric Wrapped Acoustical Absorption Panels:

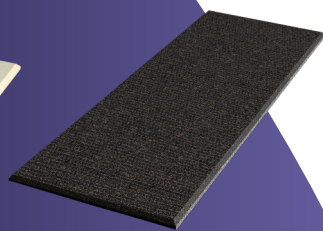
- Reduce Unwanted Acoustical Reflections
- Tame Chaotic Reverberation
- Improve Speech Intelligibility
- Commercial and Residential Applications
- Class A Fire Rated: ASTM-E84



**Standard Shapes & Sizes:** Two Week Lead Time *(Large Orders May Be Treated As A Custom Order)*



**2' x 2' Wall ProPanel**  
Beveled or Straight Edge  
1" & 2" Thicknesses



**2' x 4' Wall ProPanel**  
Beveled or Straight Edge  
1" & 2" Thicknesses



**4' x 4' Wall ProPanel**  
Beveled or Straight Edge  
2" Thickness Only



**4' x 8' Wall ProPanel**  
Beveled or Straight Edge  
2" Thickness Only



**2' x 4' Corner ProPanel**  
Reverse-Mitered Edge  
2" Thickness Only

**Custom Panels Available:** 4-6 Week lead time, subject to change.  
*(Sizes, Shapes & Fabrics available upon request)*

## ProPanel™ ProCloud™

For any professional recording studio, the Auralex ProPanel ProCloud is the most effective among all fiberglass mixing clouds with a simple frameless and modular design.

- Composed of 2"x2'x4' ProPanel Cloud Panels
- Frameless Design
- 4'x4', 4'x6' & 4'x8' Configurations



## ProPanel - Acoustical Testing Data (NRC):

Thickness:	Octave Band Center Frequency (Hz)						NRC:
	125	250	500	1000	2000	4000	
1"	0.07	0.29	0.80	1.01	1.05	0.99	0.80
2"	0.42	0.89	1.12	1.07	1.10	1.09	1.05
3"	0.75	0.89	1.11	1.21	1.21	1.20	1.10
4"	0.87	0.87	1.24	1.26	1.25	1.25	1.15

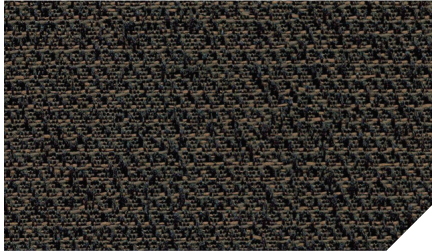
All ProPanels have a dimensional tolerance of +/- 1/16" for thickness, edge straightness, overall length and width, squareness from corner to corner, chords, radii and diameters.

**Real-World Acoustics®**

**1-800-959-3343 / 317-842-2600**  
9955 Westpoint Drive, Suite 101, Indianapolis IN USA 46256

845-812.ProPanel Spec Sheet (12/26/2019 - 11:36 AM)

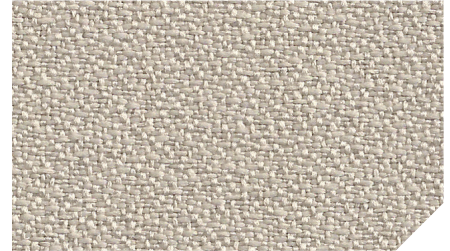
## Standard Fabrics:



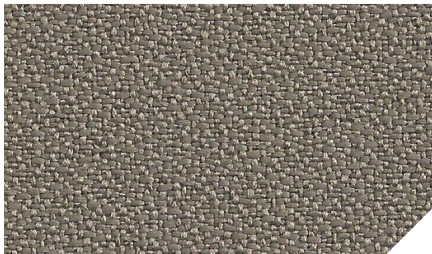
Obsidian



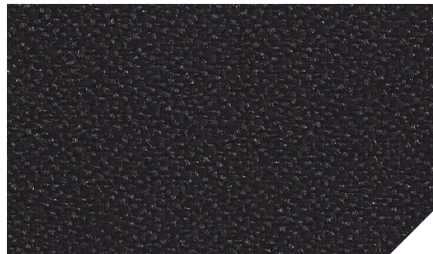
Sandstone



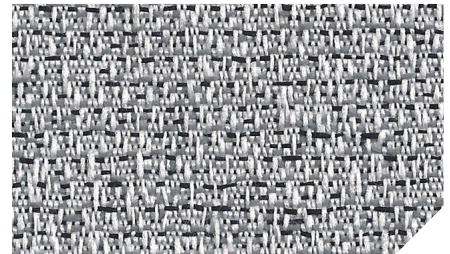
Birch



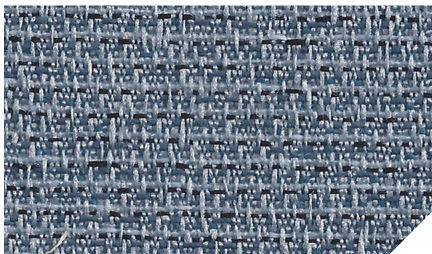
Goose



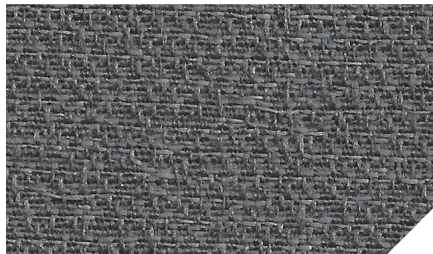
Onyx



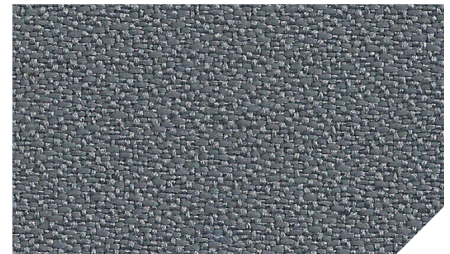
Petoskey



Quarry



Slate



Wolf

## SonoSuede™ Fabrics:



Red



Black



Tan



Brown

Due to the variances among different computer monitors and printers, Auralex cannot guarantee that the colors represented in this document will exactly match the colors of the products shipped. Therefore, color examples shown are for reference only. Some color variation may occur between dye lots. Color fading may occur with UV exposure over time, particularly with lighter colors.



# Auralex® ProPanels™

Auralex® Acoustics offers a variety of permanent and removable mounting options for your ProPanels.

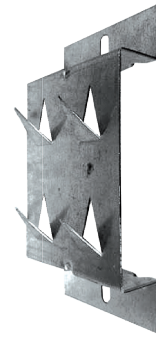
### IMPALING CLIPS:

- Included with all beveled and straight edged ProPanels
- Quick installation
- Wall applications only



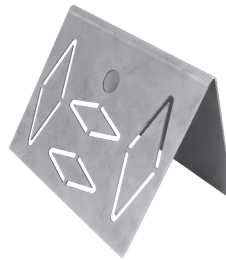
### OFFSET IMPALING CLIPS:

- Creates an air cavity behind the ProPanels for improved low frequency absorption
- Wall applications only
- 1" and 2" offsets available



### CORNER IMPALING CLIPS:

- Increase your room's low frequency absorption
- Included with all M224 ProPanels
- Vertical & horizontal corner installations: For horizontal corners use 2" thick panels only



### CLOUD ANCHORS:

- Suspends ProPanels from the ceiling
- Removable
- Creates an adjustable air space between the ProPanel and the ceiling
- Useful for mix position clouds
- Offset ceiling applications



### SNAP-ON ANCHORS:

- Permanent installation
- Use where flush mounting of ProPanels is desired
- Ceiling & wall applications



### Application Information:

	Wall Application	Ceiling Application	Permanent	Removable
Impaling Clips	X			X
Offset Impaling Clips	X			X
Corner Impaling Clips	X	X*		X
Cloud Anchors		X		X
Snap-On Anchors	X	X	X	

All copyrightable materials are ©Copyright Auralex Acoustics, Inc. 1994-2020. Auralex, Total Sound Control and Real-World Acoustics are registered trademarks, and ProPanel, ProCloud, ProPAD, SubDude, SonoSuede and ProGO are trademarks, of Auralex Acoustics, Inc. All rights reserved. Proudly designed and manufactured in the U.S.A.

While many Auralex products are fire retardant and/or self extinguishing to varying extents, we cannot guarantee that any product meets the specific building code regulations in your area as regulations widely vary from place to place.

Check with your local fire marshal or building inspector for approval prior to purchasing or installing any of our products. Auralex will not be held liable for property damage or injuries caused by the misuse of our products.

For more information visit [Auralex.com/tools/testing-data/fire-testing-data/](http://Auralex.com/tools/testing-data/fire-testing-data/)

# ProPanel™ Pro-Kits

All-In-One Premium Acoustical Room Treatment Systems

Available in 6 Stylish Fabric Choices!



The Auralex® ProKit-1™ and ProKit-2™ acoustical treatment packages are cost-effective solutions engineered to control excess mid- and high-frequency reflections in your room. Based on the Auralex® Class A fire-rated, fabric wrapped fiberglass ProPanels, these kits provide state of the art absorption performance with high build quality, great aesthetics and low odor. The included panels cover more surface area than competing offerings, a more effective resolution to your room's acoustical problems.

Both kits include 2"x24"x48" beveled wall panels and reverse mitered corner bass trap panels to provide low-frequency absorption, critical in small to medium-sized rooms. The ProKit-1 and ProKit-2 room treatment systems are available in 4 stylish SonoSuede fabric choices, Red, Black, Tan and Brown, as well as our standard fabric colors, Sandstone and Obsidian. All mounting hardware is included. Additional ProPanel Cloud and monitor isolation solutions are also available.

## ProPanel ProKit-1™:

For Rooms 12'x12' and up:

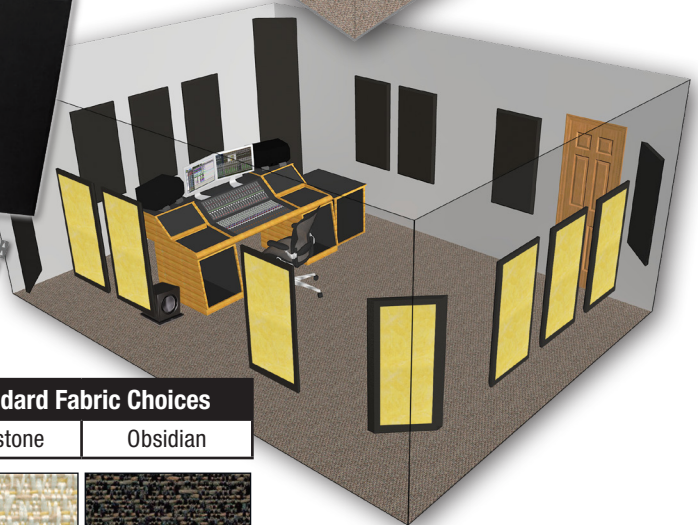
- (7) B224 Beveled Edge 2"x2'x4'
- (2) M224 Mitered Edge 2"x2'x4'



## ProPanel ProKit-2™:

For Rooms 18'x20' and up:



- (12) B224 Beveled Edge 2"x2'x4'
- (6) M224 Mitered Edge 2"x2'x4'



### SonoSuede Fabric Choices:

Tan	Brown	Black	Red
			

### Standard Fabric Choices

Sandstone	Obsidian
	

While many Auralex products are fire retardant and/or self extinguishing to varying extents, we cannot guarantee that any product meets the specific building code regulations in your area as regulations widely vary from place to place. Check with your local fire marshal or building inspector for approval prior to purchasing or installing any of our products. Auralex will not be held liable for property damage or injuries caused by the misuse of our products. For more information visit [Auralex.com/tools/testing-data/fire-testing-data/](http://Auralex.com/tools/testing-data/fire-testing-data/)

All copyrightable materials are ©Copyright Auralex Acoustics, Inc. 1994-2020. Auralex, Total Sound Control and Real-World Acoustics are registered trademarks, and ProPanel, ProKit-1, ProKit-2, SonoSuede, ProPAD, SubDude and ProGO are trademarks, of Auralex Acoustics, Inc. All rights reserved. Proudly designed and manufactured in the U.S.A.

**Real-World Acoustics®**

**1-800-959-3343 / 317-842-2600**  
9955 Westpoint Drive, Suite 101, Indianapolis IN USA 46256

1496-117.SonoSuede ProKit Spec Sheet (12/26/2019 - 11:38 AM)