



## GENERAL INFORMATION

The ETC Response Opto-Splitter provides quality and reliable DMX data distribution. Using industry-standard DMX and RDM, the Response Opto-Splitter unlocks the power of your DMX system.

### FEATURES

- Multi-port DMX splitter with DMX-in and DMX-thru
- Optically isolated DMX512 ports
- Supports Remote Device Management (RDM) Protocol
- DIN rail and rack-mount versions
- Power and DMX presence status indicators
- Supports update of connected ETC fixtures

### APPLICATIONS

- Road/receiving houses and touring
- University/professional theatres
- Hotels and Convention halls
- System integration
- Houses of worship
- House lighting
- Museums
- Themed environments

## ORDERING INFORMATION

### Response Opto-Splitter

MODEL	DESCRIPTION	PART NUMBER
RSN-OPTO-12O	Response Opto - 12 Port Rack-mount - XLR	4267A1032
RSN-OPTO-16R	Response Opto - 16 Port Rack-mount - RJ45	4267A1033
RSN-OPTO-16T	Response Opto - 16 Port Rack-mount - Terminal	4267A1034
RSN-OPTO-8DIN	Response Opto - 8 Port DIN rail - Terminal	4267A1031
RSN-OPTO-DBOX	Response Opto - DIN box with dual Opto	4267K1032
RSN-OPTO-BOX	Response Opto - DIN box with single Optos	4267K1031

### Mounting Accessories

MODEL	DESCRIPTION	PART NUMBER
RSN-OPTO-HBK	Response Opto - Hanging bracket kit	4267K1030
400CC	C-Clamp	7060A2009
DIN-RM	DIN rail Rack Mount Kit	4267A1015
DIN8	Mini DIN rail Enclosure - Horizontal	7180A1030
DIN14	Small DIN rail Enclosure - Vertical	7180A1019
DIN14-H	Small DIN rail Enclosure - Horizontal	7180A1019-H
DIN28	Large DIN rail Enclosure	7180A1018



## SPECIFICATIONS

**FUNCTIONAL**

- No configuration required
- Supports DMX512, DMX512 (1990), and DMX512-A
- Supports ANSI E1.20 Remote Device Management (RDM)

**MECHANICAL**

- Rack-mount form factor:
  - Fabricated from aluminum
  - Black, Fine-textured, powder-coat finish
  - Full 19" equipment rack width
  - Front or rear facing mounting options
- DIN rail form factor:
  - Molded plastic enclosure
  - Mounting complies with DIN43880 (35/7.5 rail)
  - Unit is 9 DIN units wide
  - DIN installation enclosure available
- Power and data activity LED indicators
  - Blue power indicator
  - Green DMX activity indicator

**ENVIRONMENTAL**

- Ambient operating temperature: -10° to 65°C (14° to 149°F)
- Operating humidity: 5% - 95% non-condensing
- Storage temperature: -40° to 70°C (-40° to 158°F)

**ELECTRICAL**

- Supports DMX input and DMX thru
- Provides optically isolated DMX/RDM outputs
- Rack-mount form factor:
  - 100-230VAC power input
  - User configurable front or rear power position
  - 35W max power draw
  - XLR, RJ45 and Terminal connector options
- DIN rail form factor:
  - 12-48VDC power input
  - 8W max power draw
  - Wiring connections use pluggable rising clamp terminals

**PLANNED REGULATORY AND COMPLIANCE**

- cETLus Listed
- CE compliant
- EAC certified
- RoHS compliant
- WEEE

## ADDITIONAL INFORMATION

**DMX512**

Often shortened to DMX (Digital Multiplex), this communication protocol is used mainly to control dimmers and multi-parameter fixtures. A universe of DMX is defined as 512 channels. DMX sends a nearly continuous stream of level information for each control channel. It is a form of RS-485 digital serial communication.

**RDM**

Remote Device Management (ANSI E1.20) is a protocol enhancement to DMX512 that allows low-speed bidirectional communication between a system controller and attached RDM devices over a standard DMX line. This protocol allows remote configuration, status monitoring, and management of devices.

PHYSICAL

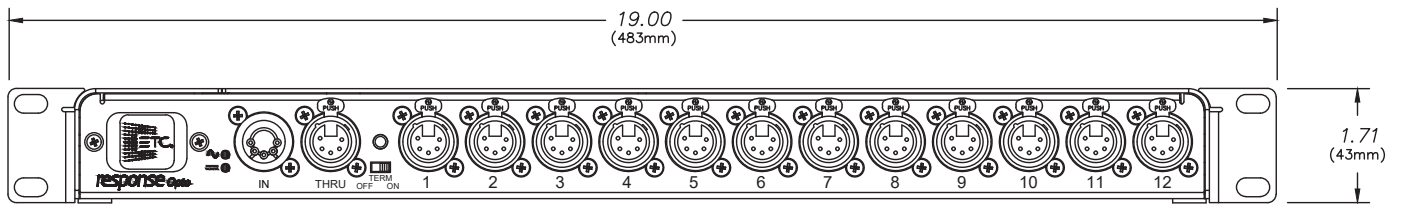
**Response Opto-Splitter Dimensions**

MODEL	HEIGHT		WIDTH		DEPTH	
	in	mm	in	mm	in	mm
Rack-mount	1.71	43	19.00	483	4.8	122

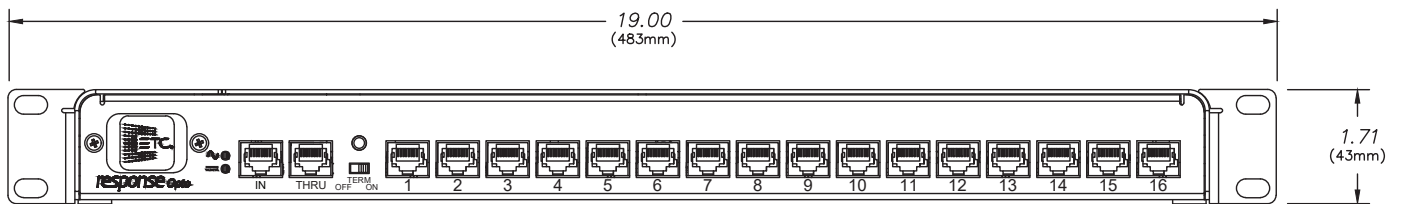
**Response Opto-Splitter Weights**

MODEL	WEIGHT		SHIPPING WEIGHT	
	lb	kg	lb	kg
Rack-mount Form	2.5	1.2	4	1.8

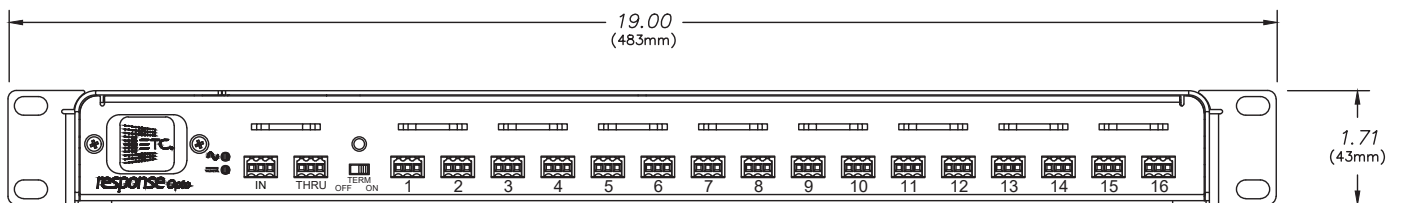
**Response Opto-Splitter - XLR Connectors - Front View**



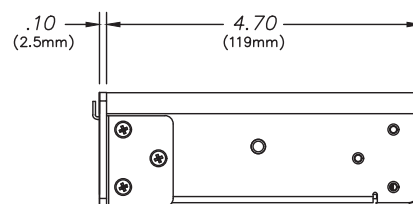
**Response Opto-Splitter - RJ45 Connectors - Front View**



**Response Opto-Splitter - Terminal Connectors - Front View**



**Response Opto-Splitter - Side View**



PHYSICAL

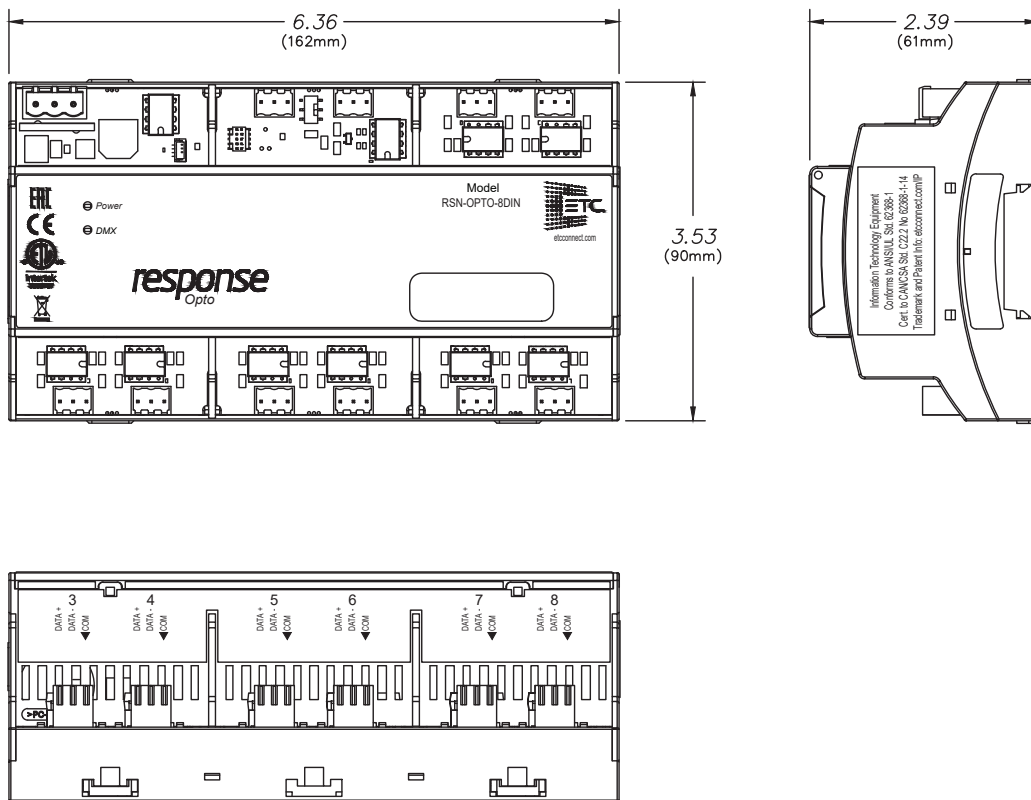
Response Opto-Splitter Dimensions

MODEL	HEIGHT		WIDTH		DEPTH	
	in	mm	in	mm	in	mm
DIN rail	3.53	90	6.36	162	2.39	61

Response Opto-Splitter Weights

MODEL	WEIGHT		SHIPPING WEIGHT	
	lb	kg	lb	kg
DIN rail	0.56	0.25	2.00	0.91

Response Opto-Splitter - DIN rail



PHYSICAL

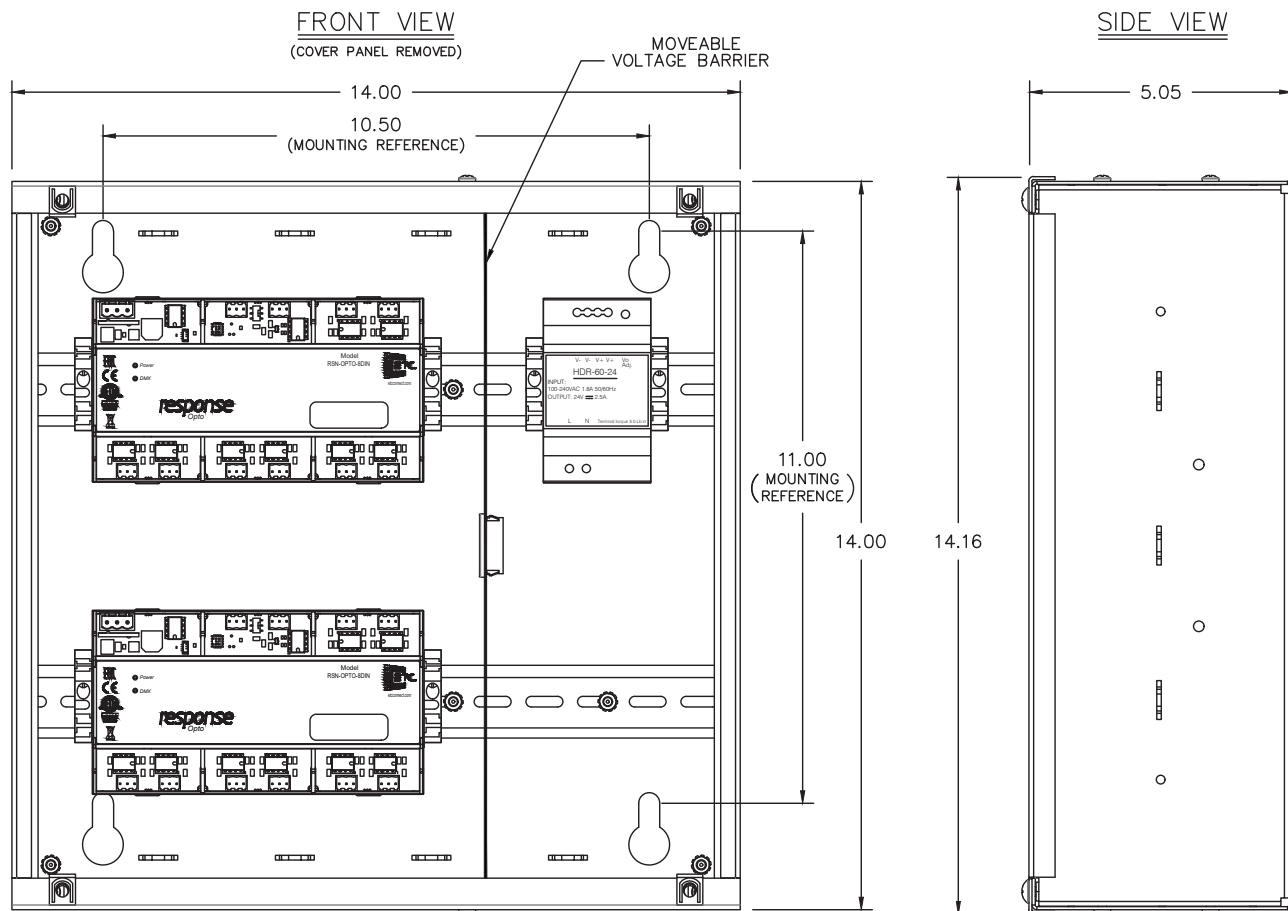
Response Opto-Splitter Dimensions

MODEL	HEIGHT		WIDTH		DEPTH	
	in	mm	in	mm	in	mm
DIN rail	14	356	14	356	5.05	128

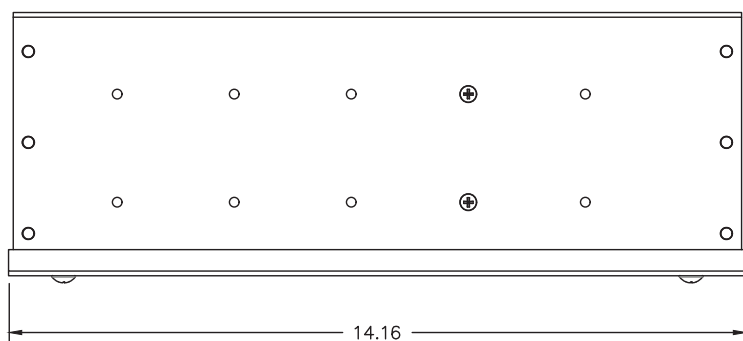
Response Opto-Splitter Weights

MODEL	WEIGHT		SHIPPING WEIGHT	
	lb	kg	lb	kg
DIN rail	14.5	6.6	16.5	7.5

Response Opto-Splitter - DIN rail dual box



TOP VIEW



PHYSICAL

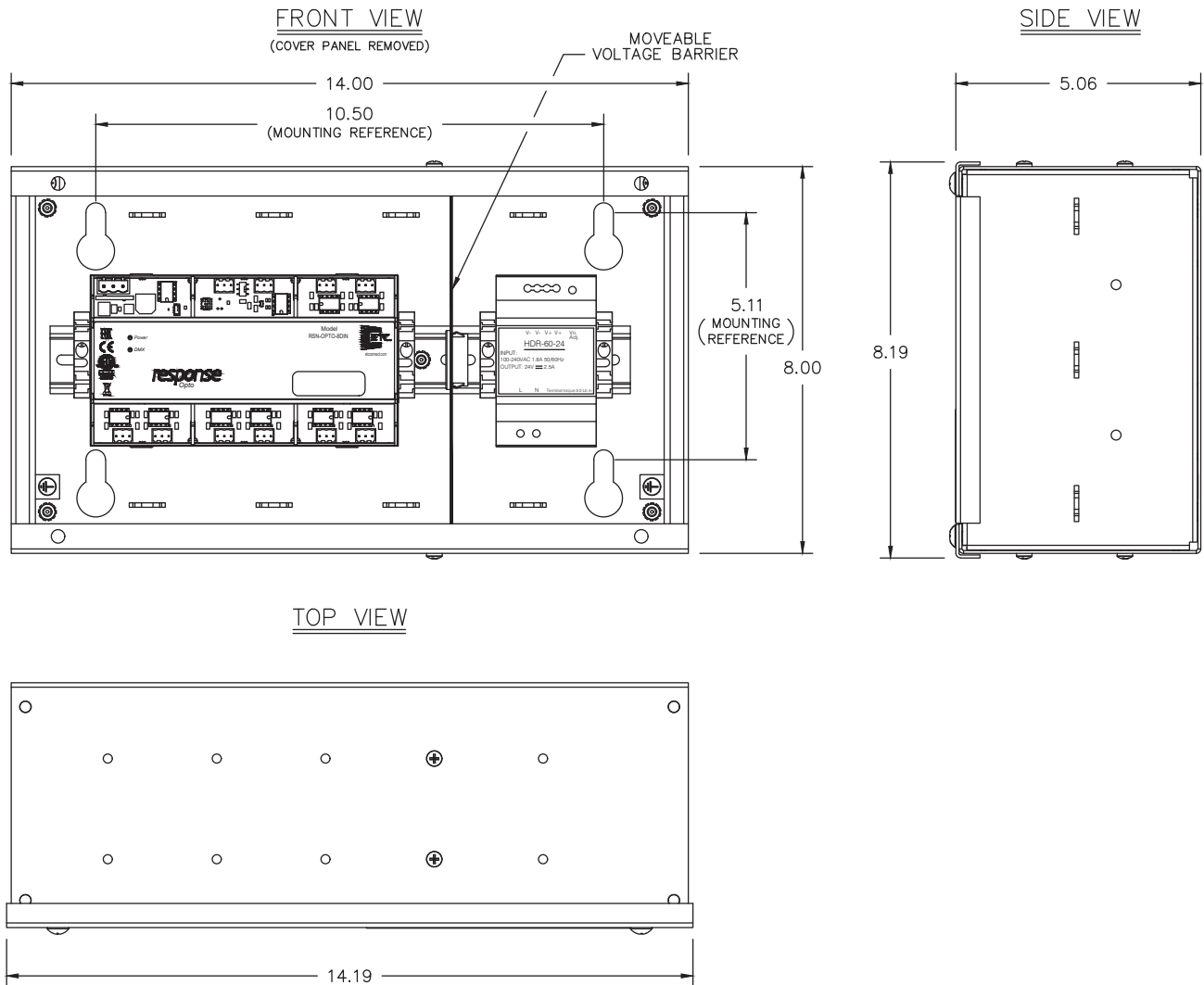
Response Opto-Splitter Dimensions

MODEL	HEIGHT		WIDTH		DEPTH	
	in	mm	in	mm	in	mm
DIN rail	8	203	14	356	5.05	182

Response Opto-Splitter Weights

MODEL	WEIGHT		SHIPPING WEIGHT	
	lb	kg	lb	kg
DIN rail	9.5	4.3	11.5	5.3

Response Opto-Splitter - DIN rail single box



Corporate Headquarters • Middleton, WI USA

Global Offices • London, UK • Rome, IT • Holzkirchen, DE • Paris, FR • Hong Kong • Singapore • New York, NY • Orlando, FL • Los Angeles, CA

Copyright© 2020 ETC. All Rights Reserved. All product information and specifications subject to change. Rev A 3/20

Trademark and patent info: etconnect.com/IP

etconnect.com