

# PBC6T(K) PBC6XT(K)

## 6" Surface-mount Speaker Packages with Optional Volume Controls



# 1

### ■ FEATURES

- Elegant Cabinet Styling Protected by Steel Mesh
- Choose Coaxial or Twin Cone
- Horizontal or Vertical Mount
- Ported to Enhance Bass
- Horizontal or Vertical Mount
- Dual 70.7/25-volt Transformer with Spade-lug Taps

### ■ DESCRIPTION

Classy is a great word to describe the Penton Audio PBC Series surface-mount speaker packages. Not only decorative, but sturdy, the curved ABS housings are equipped with dual-voltage (70.7/25) transformers and 6" cone loudspeakers which exhibit wider coverage angles than typical 8" cones.

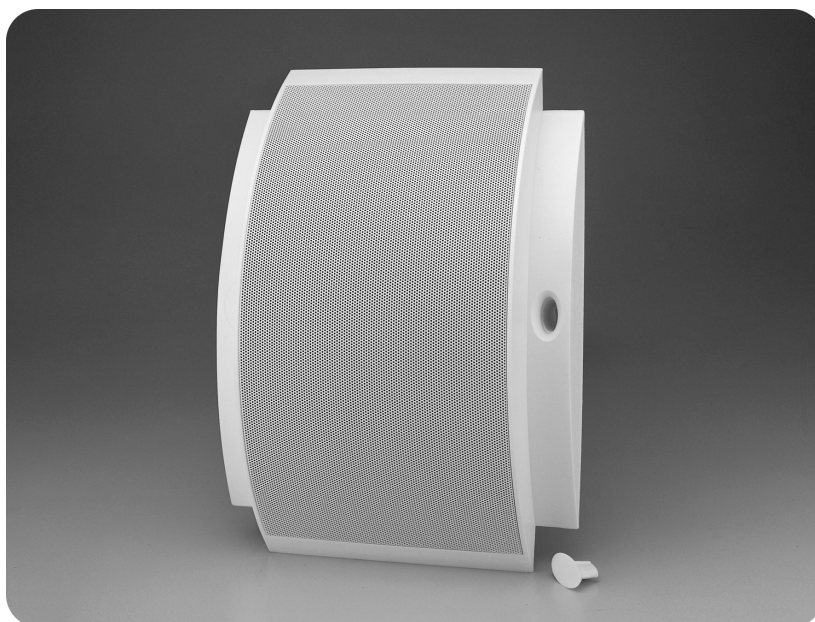
The PBC6T(K) uses a 10-watt, twin-cone loudspeaker with 5-ounce magnet, while the 15-watt PBC6XT(K) uses a coaxial loudspeaker with 10-ounce ceramic magnet. Tweeter has a 1" Mylar dome with 1/2" moving coil and neodymium magnet.

The white ABS molded cabinets are loaded with customer-centric features including UV inhibitors, optional volume control, bass port, mounting hole covers, transformer tap selection via movable spade lugs and connection via a terminal block.

### ■ APPLICATION

Offering the first serious alternative to conventional wooden wall baffles, the PBC Series can be mounted in classrooms, malls, atriums, church fellowship halls, meeting rooms and other venues where recessed speaker systems are not practical.

The PBC cabinet mounts easily with provided hole cover caps and customer supplied hardware. In the vertical orientation mounting uses the keyhole bracket. Horizontal attachment is made using the two front mounting holes. For audio connection, mount over electrical box or by allowing cable entry through either of 2 provided cutouts.



### ■ SPECIFICATIONS

<ul style="list-style-type: none"><li>• <b>SPEAKER CONE SIZE:</b> 6-1/2" (152 mm)</li></ul>	<ul style="list-style-type: none"><li>• <b>CONNECTION:</b> Terminal Block</li></ul>
<ul style="list-style-type: none"><li>• <b>SPEAKER TYPE</b> PBC6T(K): Twin Cone PBC6XT(K): Coaxial with 1" tweeter</li></ul>	<ul style="list-style-type: none"><li>• <b>TRANSFORMER MAX INSERTION LOSS</b> PBC6T(K): 1.5 dB PBC6XT(K): 0.8 dB</li></ul>
<ul style="list-style-type: none"><li>• <b>FREQUENCY RESPONSE (SEE FIG 1)</b> PBC6T(K): 110-20,000 Hz <math>\pm</math> 6 dB PBC6XT(K): 90-20,000 Hz <math>\pm</math> 6 dB</li></ul>	<ul style="list-style-type: none"><li>• <b>70.7-VOLT TRANSFORMER TAPS</b> PBC6T(K): 5, 2, 1, 0.5, 0.25 PBC6XT(K): 8, 5, 2, 1, 0.5</li></ul>
<ul style="list-style-type: none"><li>• <b>POWER HANDLING (RAW DRIVER)</b> PBC6T(K): 10 watts PBC6XT(K): 15 watts</li></ul>	<ul style="list-style-type: none"><li>• <b>70.7-VOLT TRANSFORMER IMPEDANCE</b> PBC6T(K): 1K, 2.5K, 5K, 10K, 20K PBC6XT(K): 625, 1.25K, 2.5K, 5K, 10K</li></ul>
<ul style="list-style-type: none"><li>• <b>SPL @ 1w 1m</b> PBC6T(K): 94 dB PBC6XT(K): 91 dB</li></ul>	<ul style="list-style-type: none"><li>• <b>25-VOLT TRANSFORMER TAPS:</b> PBC6T(K): 5, 2, 1, 0.625, 0.25 PBC6XT(K): 8, 4, 2, 1, 0.5</li></ul>
<ul style="list-style-type: none"><li>• <b>PBC6XT(K) TWEETER TYPE:</b> 1" Mylar Dome with 1/2" Moving Coil and Neodymium Magnet</li></ul>	<ul style="list-style-type: none"><li>• <b>25-VOLT TRANSFORMER IMPEDANCE</b> PBC6T(K): 125, 312, 625, 1K, 2.5K PBC6XT(K): 78, 156, 312, 625, 1.25K</li></ul>
<ul style="list-style-type: none"><li>• <b>DISPERSION @ 2 kHz (6 dB Down)</b> PBC6T(K): 115° PBC6XT(K): 120°</li></ul>	<ul style="list-style-type: none"><li>• <b>APPROVALS:</b> CE</li></ul>
<ul style="list-style-type: none"><li>• <b>DIRECTIVITY Q FACTOR @ 2 kHz:</b> PBC6T(K): 7.1 PBC6XT(K): 5.1</li></ul>	<ul style="list-style-type: none"><li>• <b>SUPPLIED MATCHING ACCESSORIES:</b> 2 ea. Caps for Recessed Holes; Volume-control Knob</li></ul>
<ul style="list-style-type: none"><li>• <b>CONE MATERIAL</b> PBC6T(K): Paper PBC6XT(K): Polypropylene with Rubber Surround</li></ul>	<ul style="list-style-type: none"><li>• <b>BAFFLE MATERIAL:</b> Molded ABS housing with UV Inhibitor and Steel Mesh Grille</li></ul>
<ul style="list-style-type: none"><li>• <b>MAGNET WEIGHT</b> PBC6T(K): 5.34 oz PBC6XT(K): 10.0 oz</li></ul>	<ul style="list-style-type: none"><li>• <b>FINISH:</b> Non-reflective White</li></ul>
<ul style="list-style-type: none"><li>• <b>TRANSFORMER TAP CHANGE:</b> Movable Spade Lug</li></ul>	<ul style="list-style-type: none"><li>• <b>DIMENSIONS, INCH (MM):</b> 13 x 9.45 x 3.54 (330 x 240 x 90)</li></ul>
	<ul style="list-style-type: none"><li>• <b>NET WEIGHT LBS (KGS)</b> PBC6T(K): 1.56 (1.16) PBC6XT(K): 3.00 (1.36)</li></ul>

# PBC6T(K) PBC6XT(K)

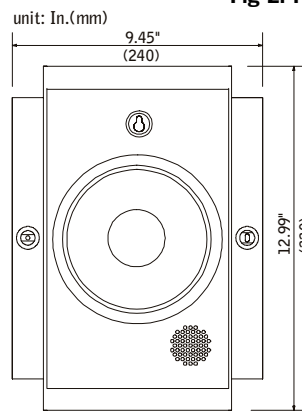
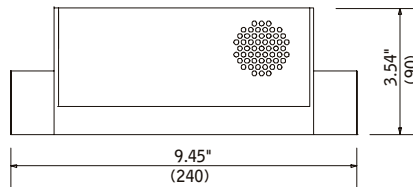
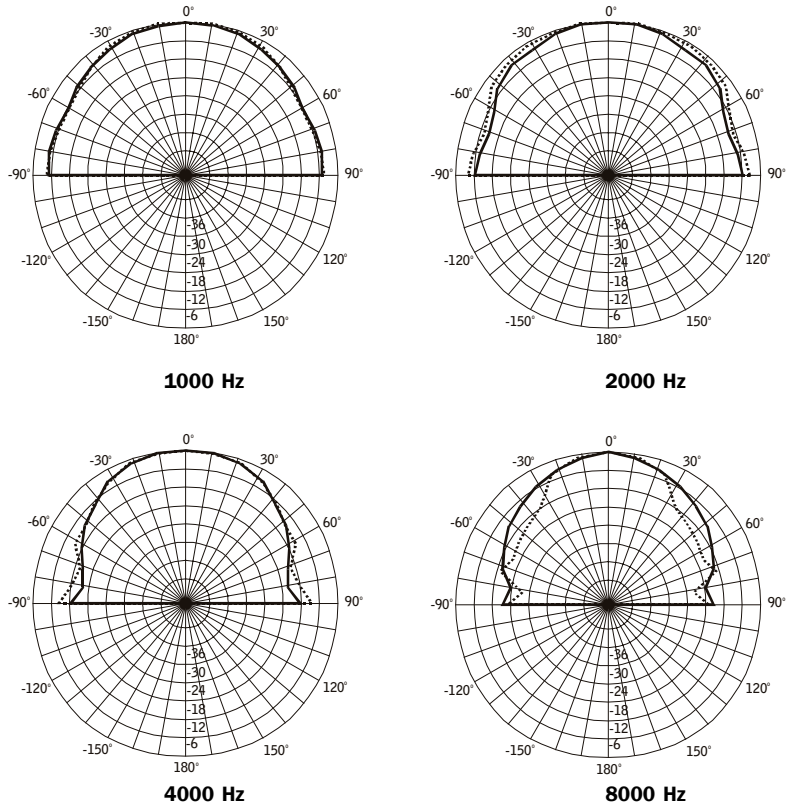
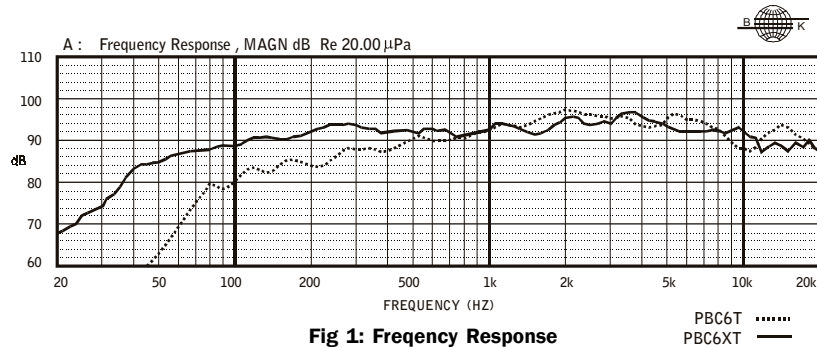
## ARCHITECTS' AND ENGINEERS' SPECIFICATIONS:

Unit shall be Penton Audio USA Model (PBC6T(K), PBC6XT(K)) or approved equal. Assembly shall be comprised of a 6-1/2" loudspeaker, factory-mounted dual-voltage 70.7/25-volt transformer and wall baffle.

Grille shall be aesthetically pleasing, constructed of molded high-impact ABS with UV inhibitors used throughout. Grille screen shall be steel mesh with a baked-on epoxy paint. Entire housing to be finished in matching white.

PBC6T(K) shall have a twin-cone loudspeaker with 5-ounce magnet. Cone shall be treated paper, a damped, high-compliance type with smooth extended response over a range of 110 to 20,000 Hz and 115° dispersion. Sensitivity shall be a minimum of 94 dB. Transformer shall have power taps of 5, 2, 1, 0.5 and 0.25 watts. Insertion loss shall not exceed 1.5 dB.

PBC6XT(K) assembly shall be comprised of a coaxial 6" loudspeaker with 10-ounce magnet, and 1" Mylar dome tweeter complete with a 1/2" moving coil as well as a neodymium magnet. Dispersion shall be 120°. Cone shall be polypropylene with rubber surround, a damped, high-compliance type with smooth extended response over a range of 90-20,000 Hz. Sensitivity shall be a minimum of 91 dB. Transformer shall have power taps of 8, 4, 2, 1 and 0.5 watts. Insertion loss shall not exceed 0.8 dB.



PBC6T(K)			PBC6XT(K)		
Watt	25V	70.7V	Watt	25V	70.7V
PIN8	----	0.25	PIN8	----	0.5
PIN7	----	0.5	PIN7	----	1
PIN6	----	1	PIN6	----	2
PIN5	0.25	2	PIN5	0.5	4
PIN4	0.625	5	PIN4	1	8
PIN3	1	----	PIN3	2	----
PIN2	2	----	PIN2	4	----
PIN1	5	----	PIN1	8	----
Black	COM	COM	Black	COM	COM

Fig 5: Wattage Tappings

**Penton Audio USA** - a subsidiary of Penton Media Technologies

406 Lincoln St., Marlborough, MA 01752

Phone: (888) 883-8383

Fax: (888) 821-2121

Website: [www.penton-usa.com](http://www.penton-usa.com)



© 2002 Penton Audio USA

Specifications subject to change without notice

SS02-1141