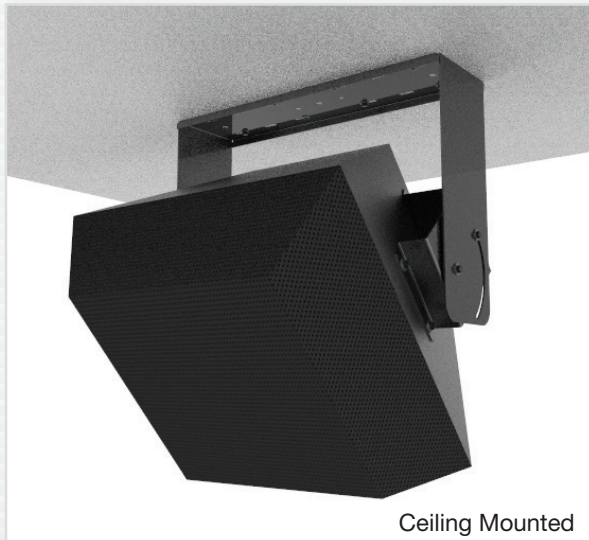


UB-QX500

(150 lb. WLL)

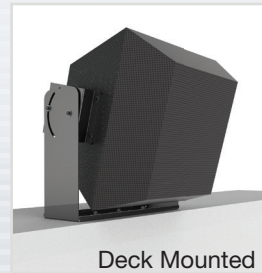
3 Piece U-Bracket Speaker Mount

UB-SERIES



Ceiling Mounted

When mounting three-way trapezoidal loudspeakers Adaptives UB-QX500 offers superior flexibility. Utilizing the angled side mounting bracket the heavy duty QX500 can be suspended from ceiling, mounted to wall or deck surfaces. Once securely mounted the UB-QX500 offers a full 90° tilt functionality



Deck Mounted



Wall Mounted

STANDARD FEATURES:

- ▶ Mounts to ceilings, walls and decks
- ▶ 90° tilt functionality
- ▶ Infinite locking positions

OPTIONAL ACCESSORIES:

- ▶ Safety Cable Kits (see data sheet)
- ▶ Ceiling Attachments (see data sheet)
- ▶ Strut Attachments (see data sheet)
- ▶ Threaded Pipe (see data sheet)

SPECIFICATIONS:

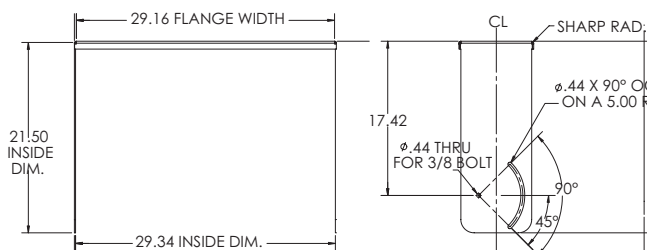
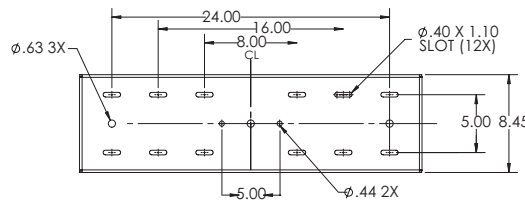
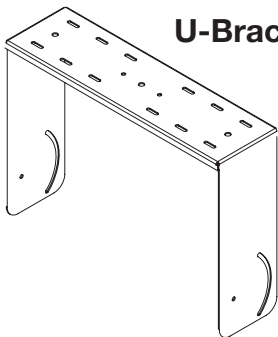
Materials: Structural Steel
Tilt: 90°
Finish: Powder Coat
Color: Black
WLL: 150lbs
Design Factor: 5:1
Pack Count: 1

*WLL = Working Load Limit

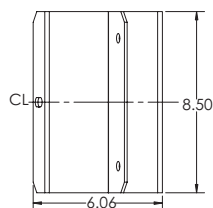
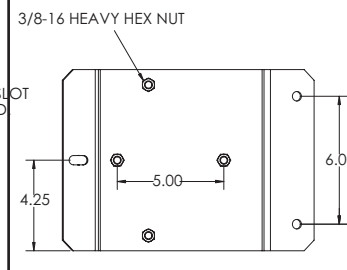
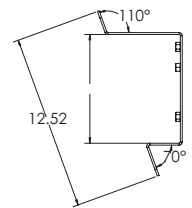
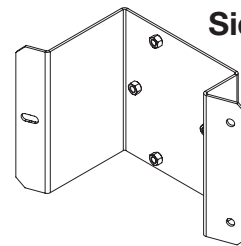
PACKAGE CONTENTS:

1 pc: U-Bracket
2 pcs: Side Mounting Bracket
2 pcs: 3/8 IDx3ODx1/8 Rubber-Washer
2 pcs: 1/2 IDx1.06OD x.13 Rubber-washer
10 pcs: 3/8-16 x 1.5" Hex Cap
10 pcs: 3/8" Flat Washer
10 pcs: 3/8" Split Washer
1 pc: Instruction Sheet

U-Bracket



Side Mounting Bracket



Rated for indoor use.

Adaptive Technologies Group
 1635 E. Burnett Street | Signal Hill, CA 90755 USA
 Ph: 562.424.1100 | Fax: 562.424.3520
 www.adapttechgroup.com



ALWAYS INSTALL SAFETY CABLES

WARNING: Mounting and/or suspension of audio and video equipment requires experienced professionals. Improperly installed loudspeakers can result in property damage, personal injury and/or liability to the installing contractor.