

Canon

POWER ZOOM ADAPTER PZ-E1



ENG

Instructions

Thank you for purchasing a Canon product.

The Canon POWER ZOOM ADAPTER PZ-E1 is an accessory that allows powered zooming when attached to a lens for EOS cameras*.

Before use, please read this instruction manual as well as the instruction manual for your camera and lens. There may be warnings regarding shooting listed in them.

* Supported lens for EOS cameras (as of February 2016):
EF-S18-135mm f/3.5-5.6 IS USM

Conventions used in this instruction



Warning to prevent adapter, lens, or camera malfunction or damage.



Supplementary notes on using the adapter.

Safety Precautions

Precautions to ensure that the camera is used safely. Read these precautions thoroughly. Make sure all details are observed in order to prevent risks and injury to the user and other people.



Warning

Details pertaining to risks that may result in death or serious injury.

- Care must be taken with the batteries used in the product, as follows. They may produce heat, smoke, flame, or leak or burst, causing fires or injuries.
 - Do not use batteries with a nominal voltage in excess of 1.5 V or where the nominal voltage cannot be confirmed.
 - Do not mix battery brands or use old and new batteries together.
 - Make sure you put the batteries in the right way around.
 - Do not disassemble batteries, recharge them (unless rechargeable), leave them in hot places, apply heat to them, short out their terminals, or throw them in a fire.
- When using some brands of AAA lithium batteries, there may be rare cases when the battery gets extremely hot. For safety's sake, please do not use AAA lithium batteries.

- Do not allow the product to maintain contact with the same area of skin for extended periods of time during use. This may result in low-temperature contact burns, including skin redness and blistering, even if the product does not feel hot. The use of a tripod or similar equipment is recommended when using the product in hot places and for people with circulation problems or less sensitive skin.



Caution

Details pertaining to risks that may result in injury.

- There is the risk of getting your finger or hair caught between the lens zoom ring and the product. Take care when using the product.
- If internal fluid such as battery leaks get on you, wash it off thoroughly with water. Do not rub your eyes or mouth while you have fluid on your hands.

Caution

Details pertaining to risks that may result in damage to property.

- This is a precision instrument. Do not drop it, subject it to shock, or attempt to dismantle it yourself.
- When carrying a lens or a camera to which the adapter is attached, always carry it by the lens/camera body.
- Do not leave the adapter in excessive heat such as in a car in direct sunlight. High temperatures can cause the adapter to malfunction.
- Remove the battery when you are not using the adapter. Fluid leakage can cause the adapter to malfunction.

General Precautions

Handling Precautions

- If the adapter is taken from a cold environment into a warm one, condensation may develop on the outside surface and internal parts. To prevent condensation in this case, first put the adapter into an airtight plastic bag before taking it from a cold to warm environment. Then take out the adapter after it has warmed gradually. Do the same when taking the adapter from a warm environment into a cold one.

Shooting Precautions

- When using the power zoom, the lens will stop before the limit at both the wide and telephoto ends. The available focal length range is limited. The focal length range where the power zoom can be used differs for each lens. Refer to “Materials” on Page 10 for details.
- Attaching the camera to a tripod may cause interference with the adapter. If this is the case, please use the separately-sold TS-E Lens Tripod Adapter.

This device complies with Part 15 of the FCC Rules.

Operation is subject to the following two conditions: (1) This device may not cause harmful interference, and (2) this device must accept any interference received, including interference that may cause undesired operation.

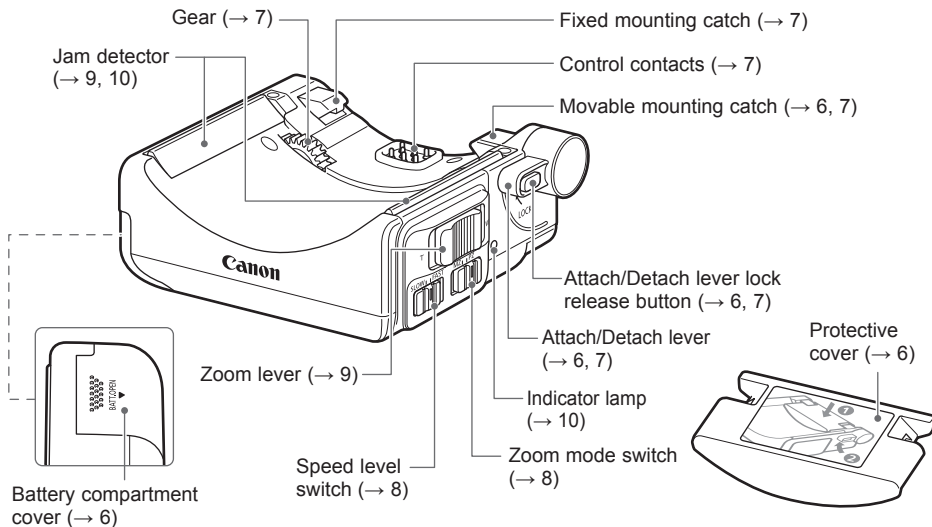
Do not make any changes or modifications to the equipment unless otherwise specified in the instructions. If such changes or modifications should be made, you could be required to stop operation of the equipment.

This equipment has been tested and found to comply with the limits for a class B digital device, pursuant to part 15 of the FCC Rules. These limits are designed to provide reasonable protection against harmful interference in a residential installation. This equipment generates, uses and can radiate radio frequency energy and, if not installed and used in accordance with the instructions, may cause harmful interference to radio communications.

However, there is no guarantee that interference will not occur in a particular installation. If this equipment does cause harmful interference to radio or television reception, which can be determined by turning the equipment off and on, the user is encouraged to try to correct the interference by one or more of the following measures:

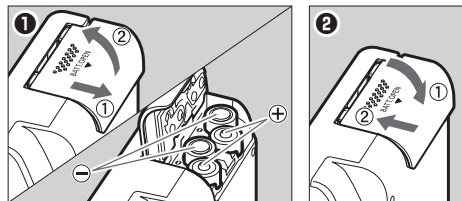
- Reorient or relocate the receiving antenna.
- Increase the separation between the equipment and receiver.
- Connect the equipment into an outlet on a circuit different from that to which the receiver is connected.
- Consult the dealer or an experienced radio/TV technician for help.

Nomenclature



- The numbers in the parentheses refers to the reference page.

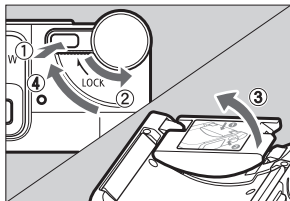
1 Inserting and Removing Batteries



1. Open the battery compartment by sliding the cover in the direction of the arrows. (Fig. 1: ①②)
2. Insert (or remove) the batteries, making sure that they are in the correct direction (see diagram inside cover). (Fig. 1)
3. After closing the battery compartment, slide the cover in the direction of the arrow until it clicks. (Fig. 2: ①②)

! Non-alkaline AAA batteries lack unified standards for contact point shapes, so the brand you use may cause problems with contact.

2 Removing and Attaching Protective Cover



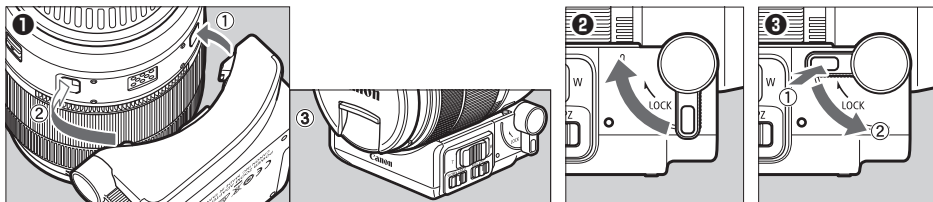
■ Removing

1. Turn the attach/detach lever in the direction of the arrow ② while pressing down on the attach/detach lever lock release button. (①②)
2. Remove the protective cover from the movable mounting catch. (③)

■ Attaching

1. Attach the protective cover to the adapter in the reverse order for removing it.
2. Turn the attach/detach lever in the direction of the arrow ④ until it clicks to fasten the cover to the adapter. (④)

3 Attaching and Removing Adapter



■ Attaching

1. Line up the fixed mounting catch and the movable mounting catch at the sockets for attaching the power zoom adapter on the lens and hold it against the lens. (Fig. ①: ①②③)
2. Turn the attach/detach lever in the direction of the arrow until it clicks to fasten the adapter to the lens. (Fig. ②)

- ⚠ Pay attention to the orientation of the adapter vis-a-vis the lens.
- This adapter will not function if the lens is not attached to the camera body.

■ Removing


1. Hold the adapter firmly and turn the attach/detach lever in the direction of the arrow while pressing down on the attach/detach lever lock release button. (Fig. ③: ①②)
2. Remove the adapter from the lens in the reverse order for attaching it.


- ⚠ Do not use excess force in attaching or removing the adapter. It can cause it to break or malfunction.
- Take care not to damage the control contacts or the gear when you remove the adapter. Also remember to attach the protective cover.
- Any damage, dirt, fingerprints, etc. on the control contacts can cause poor contact or corrosion, leading to operational problems. Any dirt on the contacts should be wiped off with a soft cloth.

4 Setting Zoom Mode

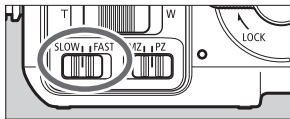


1. The zoom mode switch can be set to either Power Zoom [PZ] or Manual Zoom [MZ].
2. To zoom using power zooming, set the switch to Power Zoom [PZ].
3. To zoom by directly turning the zoom ring on the lens, set the switch to Manual Zoom [MZ].

 The indicator lamp goes off when set to Manual Zoom [MZ].

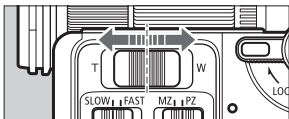
 Do not force the zoom ring on the lens when using the Power Zoom [PZ] zoom mode. It can cause damage to the lens.

5 Setting Speed Level



- Use the speed level switch to set the speed of the power zoom.
- Setting this to [SLOW] provides a slow zoom, suitable for movie photography. Setting this to [FAST] provides a faster zoom than [SLOW].

6 Using Power Zoom



Use the zoom lever to use the power zoom. Sliding it to [W] will zoom the lens out (wide end) and sliding it to [T] will zoom the lens in (telephoto end).

The zoom speed will change depending on how much the zoom lever is moved. Refer to “Materials” on Page 10 for details of the zoom speeds.

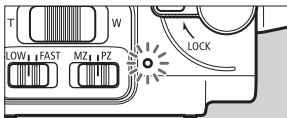


You can use power zooms by remote control when using this adapter. Refer to “Materials” on Page 11 for details of remote control.



- If a foreign object is caught between the lens's zoom ring and the adapter while power zoom is being used, it will stop after the motor drives it to expel the object. You cannot use Power Zoom while the jam detector is pressed.
- When using Power Zoom from the telephoto end to the wide end, take care that you do not get your fingers caught between the adapter and the tip of the lens or the lens hood.
- The motor noise may be recorded when using Power Zoom during video shooting. Setting the speed level to [SLOW] will reduce the motor noise.
- There may be some slight sounds from the adapter when the camera is turned on or wakes up from Auto Power Off.
- While using the zoom lever, do not apply force in the direction where the adapter parts from the lens. It can cause abnormal sounds or damage.

7 Indicator Lamp



The indicator lamp shows the following statuses for the adapter.

On	Power zoom can be used. *1
Off	Power zoom cannot be used. *2
Slow flashing	Heat warning (will stop soon) *3
Fast flashing	Heat warning (stopped) *3

*1: If the lens has the zoom ring lock engaged, power zoom will not be possible even if the lamp is on.

*2: In the following situations, the indicator lamp will be off and you will not be able to use the power zoom.

- When the zoom mode is set to Manual Zoom [MZ].
- When the camera's power is off, it has automatically powered off, or the battery is dead.
- When the jam detector is pressed.

*3: Using the adapter for extended periods of time or in hot locations can cause the internals to heat up, making it stop working. If the indicator lamp is flashing, stop using the adapter until it is cooler.

Materials

■ Usable Focus Range for the Power Zoom

Lens name	Usable focus range for the power zoom
EF-S18-135mm f/3.5-5.6 IS USM	19 - 132 mm

- The zoom may stop outside the displayed range depending on use conditions.

■ Zoom speed

Lens name	Speed level setting and wide → telephoto times	
	SLOW	FAST
EF-S18-135mm f/3.5-5.6 IS USM	Approx. 11.5 to 15.0 sec.	Approx. 4.0 to 14.5 sec.

- The displayed range may change depending on use conditions.

■ Minutes of Continuous Operation

Lens name	Minutes the adapter can be used continuously using AAA alkaline batteries
EF-S18-135mm f/3.5-5.6 IS USM	Approx. 100 min.

- Data based on Canon testing standards.
- The continuous operating time may vary depending on the battery brand or operating conditions.

Materials

■ About Remote Control

If you are using a camera* that supports remote control for the adapter, you can use the Camera Connect smartphone app or the EOS Utility software that comes with the camera to operate the power zoom. The zoom mode switch should be set to Power Zoom [PZ].

For details, refer to the EOS Utility software instruction manual or the Canon website.

* Supported EOS cameras (as of February 2016):
EOS 80D

Specifications

Power source	Four AAA-size alkaline batteries (AAA-size nickel-metal hydride batteries (Ni-MH) can also be used.)
Dimensions (W x H x D)	83.5 x 36.5 x 73.5 mm / 3.29 x 1.44 x 2.89 inch
Weight (body only, without batteries)	Approx. 120 g / 4.2 oz
Working temperature range	0°C - 40°C / 32°F - 104°F
Accessories	Soft case, protective cover, four AAA alkaline batteries

- All data listed is measured according to Canon standards.
- Product specifications and appearance are subject to change without notice.

Only for European Union and EEA (Norway, Iceland and Liechtenstein)



These symbols indicate that this product is not to be disposed of with your household waste, according to the WEEE Directive (2012/19/EU), the Battery Directive (2006/66/EC) and/or national legislation implementing those Directives.

If a chemical symbol is printed beneath the symbol shown above, in accordance with the Battery Directive, this indicates that a heavy metal (Hg = Mercury, Cd = Cadmium, Pb = Lead) is present in this battery or accumulator at a concentration above an applicable threshold specified in the Battery Directive.

This product should be handed over to a designated collection point, e.g., on an authorized one-for-one basis when you buy a new similar product or to an authorized collection site for recycling waste electrical and electronic equipment (EEE) and batteries and accumulators. Improper handling of this type of waste could have a possible impact on the environment and human health due to potentially hazardous substances that are generally associated with EEE. Your cooperation in the correct disposal of this product will contribute to the effective usage of natural resources.

For more information about the recycling of this product, please contact your local city office, waste authority, approved scheme or your household waste disposal service or visit

www.canon-europe.com/weee, or www.canon-europe.com/battery.

Canon