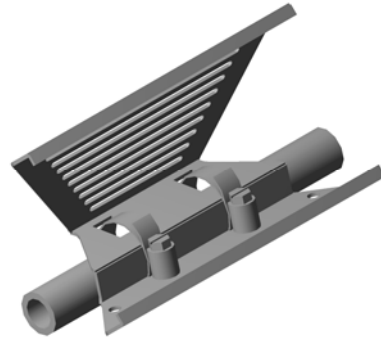


## ACCESSORIES

### Handle Bar Bracket SAS-HCB

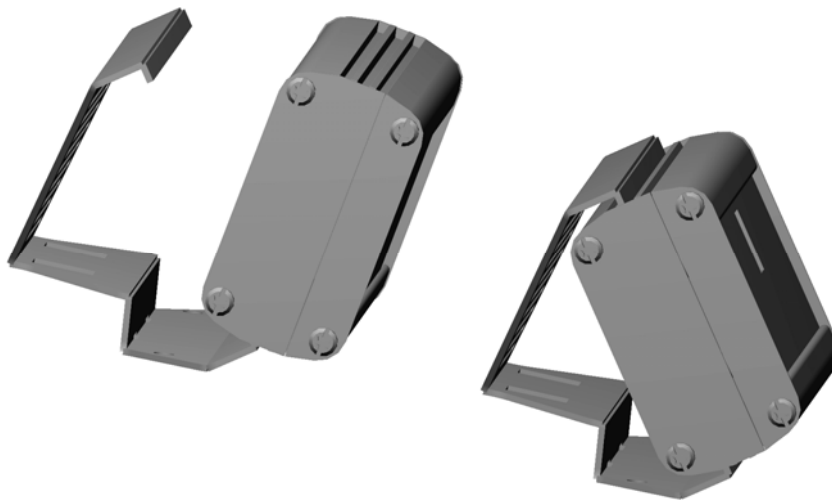


OR



Install mounting bracket to flat surface using either the screw holes or slots provided for the mounting screws.

Install bracket to pipe or tubing using the smallest possible clamp provided. The clamp must be oriented as shown with the “tail” inside the bracket.



Secure the unit in the mounting bracket:

- First, seat the bottom bracket in the SAS-HCB8 bottom rear slot;
- Then tilt the unit back until it snaps and locks into position.