



2007 PRODUCT CATALOG



ULTIMATE[®]
SUPPORT

ELEVATING PERFORMANCES

Official Stand Company of:

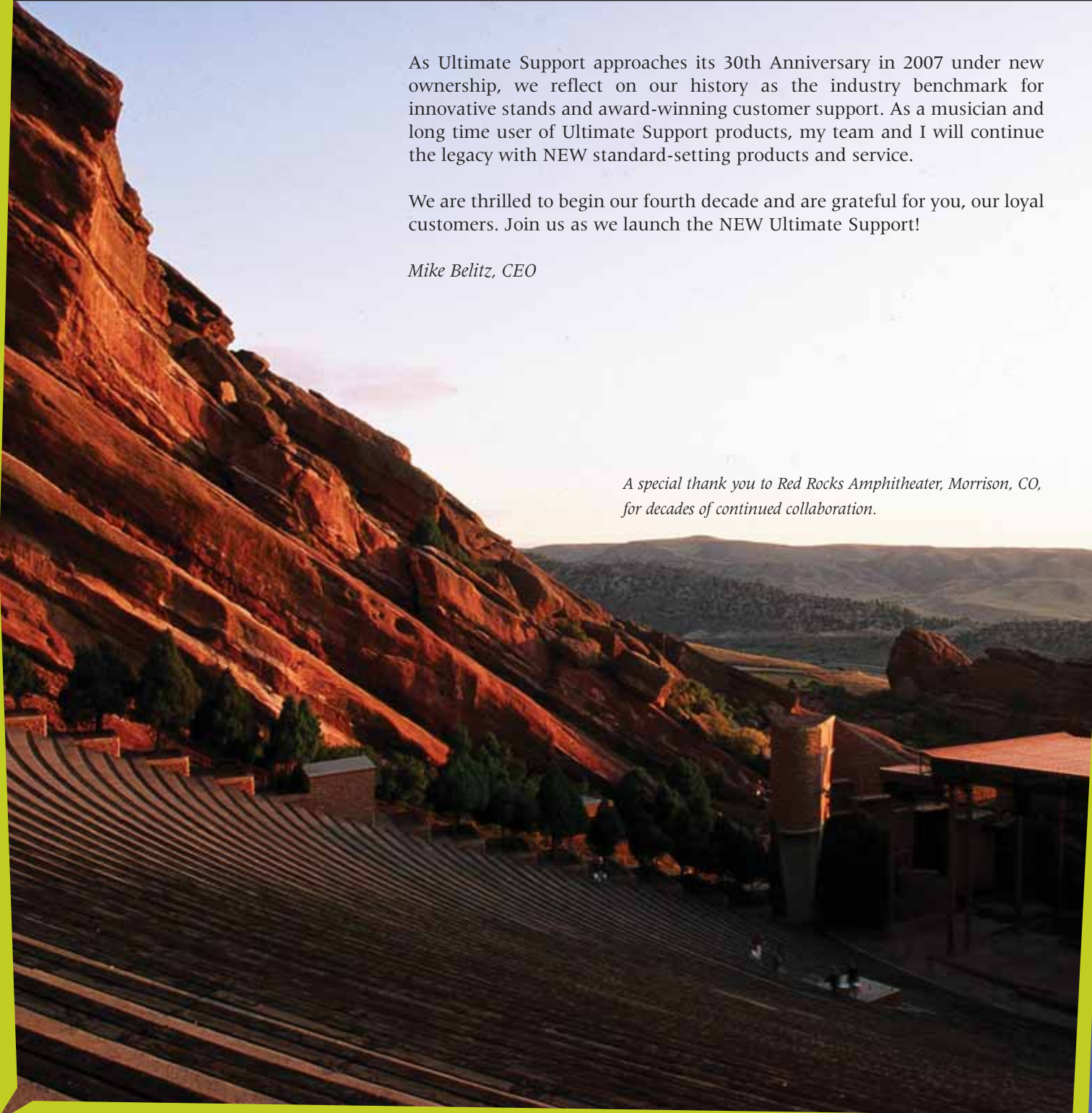


As Ultimate Support approaches its 30th Anniversary in 2007 under new ownership, we reflect on our history as the industry benchmark for innovative stands and award-winning customer support. As a musician and long time user of Ultimate Support products, my team and I will continue the legacy with NEW standard-setting products and service.

We are thrilled to begin our fourth decade and are grateful for you, our loyal customers. Join us as we launch the NEW Ultimate Support!

Mike Belitz, CEO

*A special thank you to Red Rocks Amphitheater, Morrison, CO,
for decades of continued collaboration.*



Contents

SOUND REINFORCEMENT & LIGHTING STANDS

Speaker Stand Selection Guide	4
TS-90 Series TeleLock® Speaker Stands	5
TS-80 Series Original Speaker Stands	6
TS-70B Speaker Stands	7
Speaker Stand Accessories	8
Lighting Trees	9
MS Series Monitor Stands	10

KEYBOARD STANDS

Keyboard Stand Selection Guide	11
VS-80B V-Stand® & Accessories	12
Apex Keyboard Stands & Accessories	14
IQ X-Style Keyboard Stands & Tier	16

GUITAR STANDS

Guitar Stand Selection Guide	17
GS-100 Genesis Guitar Stand	18
GS-200 Genesis Guitar Stand	19
GS-50 Genesis Guitar Stand	20
AMP-150 Genesis Amp Stand	21

MICROPHONE STANDS AND BOOMS

Microphone Stands & Booms Selection Guide	22
MC-125 Professional Studio Boom	23
MC-97, MC-78 One-Hand Mic Stands	24
MC-40, MC-41T Mic Stand & Boom Packages	25
MC-97, MC-87 Stackable Base Mic Stands	26
MC-05 Weighted Base Mic Stand	27
MCT-94T, MC-84 Booms	27

Warranty

In its commitment to uncompromising product quality, Ultimate Support Systems provides warranties on all products. In its commitment to uncompromising product quality, Ultimate Support Systems provides warranties on all products. This warranty is to the original user/purchaser of the Ultimate Support product. Ultimate Support warrants this product to be free from MANUFACTURING DEFECTS. This warranty does not include damage to the product resulting from normal wear and tear, accident, misuse, improper installation or operation or unauthorized repair or alterations. If the product should become defective within the warranty provisions, we will elect to repair or replace it free of charge at our option, including free return postage, provided it is delivered prepaid to Ultimate Support. Proof of purchase must be submitted with the returned product.

All products needing to be sent to Ultimate Support Systems, Inc. for repair or replacement must have a Return Authorization Number and will be returned to the sender un-repaired if one is not included. It is the sender's responsibility to pay for shipment to Ultimate Support. If the product is determined to fall under warranty, Ultimate Support will pay for return shipping to the customer. Please call Ultimate Support for a Return Authorization Number and return instructions at 800.525.5628, or e-mail: music.customersupport@ultimatesupport.com

Products will be repaired or replaced at Ultimate Support's discretion. Should Ultimate Support deem a product non-warranty, we will contact the sender for authorization to repair the product and make arrangements for payment.

THE PURCHASER'S/USER'S SOLE REMEDY SHALL BE SUCH REPAIR OR REPLACEMENT AS IS EXPRESSLY PROVIDED ABOVE, AND ULTIMATE SUPPORT SYSTEMS, INC. SHALL IN NO EVENT BE LIABLE FOR ANY INCIDENTAL OR CONSEQUENTIAL DAMAGES ARISING OUT OF THE USE OR INABILITY TO USE THIS PRODUCT FOR ANY PURPOSE WHATSOEVER.

For answers to any questions regarding warranty/service, call Customer Support (800) 525-5628.

Some states do not allow the exclusion or limitation of incidental or consequential damages, so the above limitation or exclusion may not apply to you. This warranty gives you specific legal rights, you may also have other rights which vary from state to state.

TRIPOD SPEAKER STANDS

SELECTION GUIDE

Spec	TS-90 Series	TS-99 Series	TS-80 Series	TS-88 Series	TS-70
Page Number	page 5	page 5	page 6	page 6	page 7
Height Adjustment Collar					
Patented TeleLock Collar	●	●			
Die-cast clamp & tightening knob			●	●	
Tightening knob w/Pin					●
Height Range					
3'8" - 6'7"	●		●		
4'2" - 6'5"					●
Tall 5'2" - 9'2"		●		●	
Center tube safely locks in stand	●	●	●	●	
Telescoping Tube Diameter					
1-1/2" Tube	●	●	●	●	
1-3/8" Tube					●
Leg Fitting					
Die-cast clamp & quick-release lever	●	●			
Die-cast clamp & tightening knob			●	●	
Tightening knob					●
Socket Adapter					
Built-in	●	●	●	●	
Included as separate piece					●
Rubber foot caps won't fall off	●	●	●	●	●
Anodized aluminum finish					
Black only	●	●			●
Black or Silver			●		
*Leveling Leg for uneven surfaces		*TS-99BL only			
Converts to Lighting Tree		●		●	
Warranty					
Guaranteed for Life	●	●			
5-Year			●	●	
3-Year					●
Load Capacity	150 lbs	150 lbs.	150 lbs.	150 lbs.	150 lbs.

Sum 41 from MTV's "Nokia Presents Hard Rock Live" Ultimate Support is the official stand company of Hard Rock Live



TELELOCK® TS-90 SERIES SPEAKER STANDS

Setting the standard as the top-of-the-line speaker stand on the market.

PATENTED TELELOCK®

TeleLock allows one person to easily and safely raise and lower heavy speakers.

HEAVY-DUTY STAND

Larger diameter tubing and metal-reinforced clamps securely support more weight than other stands.

PORTABLE, VERSATILE & RELIABLE

Quickly folds into a compact, lightweight unit. Includes integrated sizing adapter and rubber foot caps that won't fall off.

GUARANTEED FOR LIFE

The last stand you will ever have to buy, backed by our award-winning customer support.

TS-90B

- TS-90B #13908— black
- height 3'8" - 6'7" (1118 mm - 2007 mm)
- weight 6.2 lbs. (2.8 kg)
- base diameter 47" (1194 mm)
- load capacity of 150 lbs. (68.2 kg)
- folded 43.5" x 5.5" (1105 mm x 140 mm)
- guaranteed for life

TS-99B

TALL SPEAKER STANDS

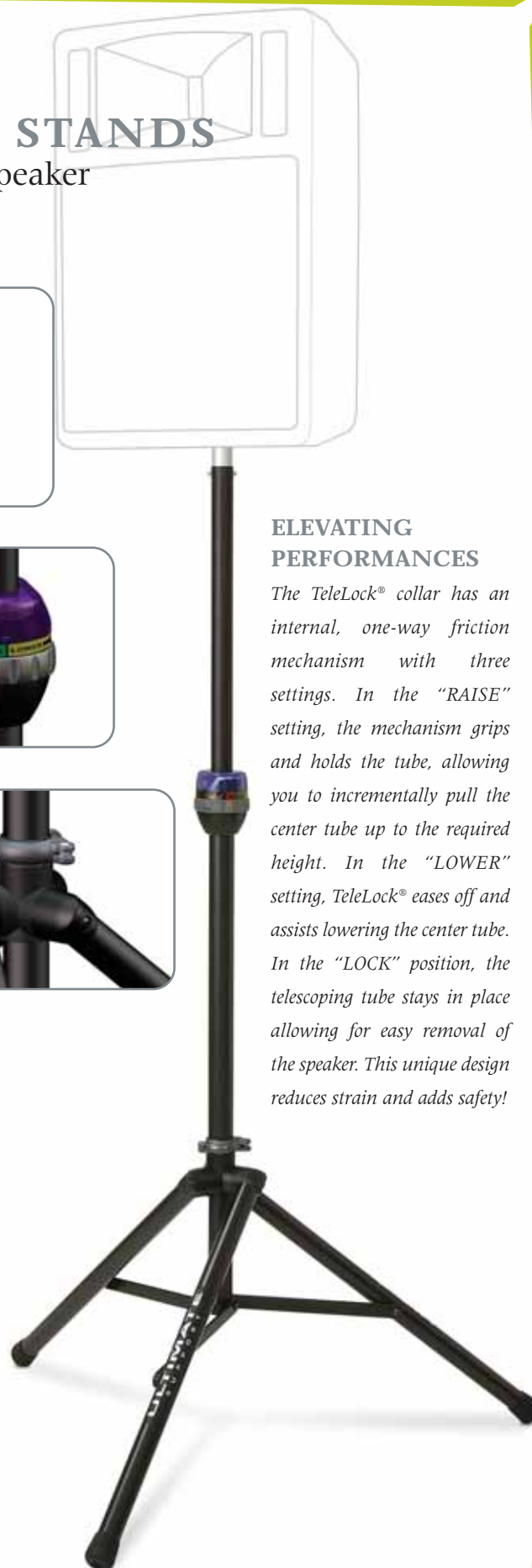
- TS-99B #13910— black
- height 5'2" - 9'2" (1575 mm - 2794 mm)
- weight 8 lbs. (3.6 kg)
- base diameter 62" (1575 mm)
- load capacity of 150 lbs. (68.2 kg)
- folded 57.5" x 5.5" (1461 mm x 140 mm)
- guaranteed for life

TS-99BL

TALL LEVELING-LEG SPEAKER STAND

Leg adjusts in length to level the stand on uneven surfaces. Except where noted, specs are the same as TS-99B above.

- TS-99BL #13642— black leveling leg
- weight 9 lbs. (4.1 kg)
- folded 57.5" x 6" (1461 mm x 152 mm)



ELEVATING PERFORMANCES

The TeleLock® collar has an internal, one-way friction mechanism with three settings. In the "RAISE" setting, the mechanism grips and holds the tube, allowing you to incrementally pull the center tube up to the required height. In the "LOWER" setting, TeleLock® eases off and assists lowering the center tube. In the "LOCK" position, the telescoping tube stays in place allowing for easy removal of the speaker. This unique design reduces strain and adds safety!

ORIGINAL TS-80 SERIES SPEAKER STANDS

The number one speaker stand line on the market for over twenty-five years.

HEAVY-DUTY STAND

Larger diameter tubing and metal reinforced clamps securely support more weight than other stands.

TRULY PORTABLE

Quickly folds into a compact, lightweight unit.

NO PARTS TO LOSE

Integrated sizing adapter and rubber foot caps that won't fall off.

5-YEAR WARRANTY

Constructed of high quality materials, backed by our award-winning customer support.

TS-80B/TS-80S

- TS-80B #13904— black, TS-80S #13903— silver
- height 3'8" - 6'7" (1118 mm - 2007 mm)
- weight 6.2 lbs. (2.8 kg)
- base diameter 47" (1194 mm)
- load capacity of 150 lbs. (68.2 kg)
- folded 43-1/2" x 5-1/2" (1105 mm x 140 mm)
- 5-year warranty

TS-88B

- TS-88B #13906— black
- height 5'2" - 9'2" (1575 mm - 2794 mm)
- weight 8 lbs. (3.6 kg)
- base diameter 62" (1575 mm)
- load capacity of 150 lbs. (68.2 kg)
- folded 57.5" x 5.5" (1461 mm x 140 mm)
- 5-year warranty

ELEVATING PERFORMANCES

Die-cast metal clamps fit snugly over glass-reinforced polycarbonate fittings; this combination creates the strongest and most durable telescoping collar and leg collar possible. Since the handknob actually tightens the metal clamp and not the plastic directly, these collars aren't easily over-tightened, snapped or cracked! Ultimate Support speaker stands are the safest, most stable and durable stands you can own!





Sonny Sandoval and P.O.D. are elevated by the use of Ultimate Support's Guitar and Microphone Stands

SPEAKER STAND TS-70B

Compact, lightweight, height adjustable at a competitive price...a great choice!

SAFE AND SECURE

Securely supports more weight than other light-weight stands; locking pin for absolute speaker security.

TRUE PORTABILITY

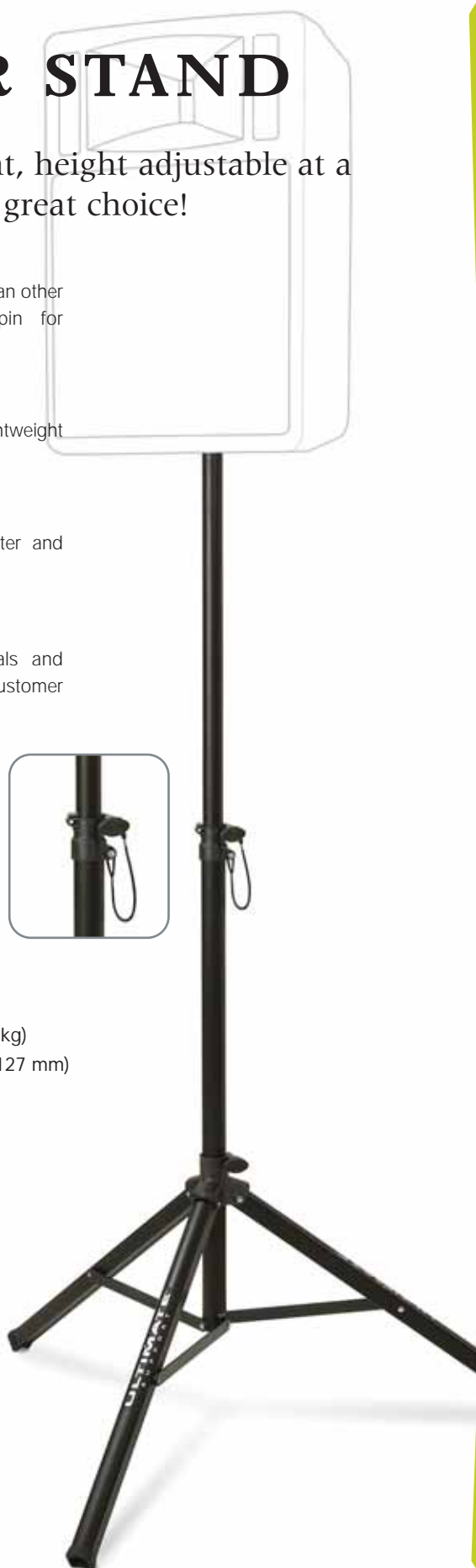
Quickly folds into an ultra-slim, lightweight unit.

VERSATILE

Includes integrated socket adapter and foot caps that won't fall off.

3-YEAR WARRANTY

Constructed of durable materials and backed by our award-winning customer support.



TS-70B

- TS-70B #13712— black
- height 4'2" - 6'5" (1270 mm - 1956 mm)
- weight 5 lbs. (2.4 kg)
- base diameter 40" (1016 mm)
- load capacity of 150 lbs. (68.2 kg)
- folded 41.5" x 5" (1054 mm x 127 mm)
- 3-year warranty

ACCESSORIES FOR SPEAKER STANDS

The following accessories are for all TS-90 (pg. 4), TS-80 (pg. 5), and TS-70 (pg. 6) Speaker Stands.



Billy Nershi of String Cheese Incident is wild about his Ultimate Support gear



TOTE BAGS

Heavy-duty, padded, zippered Tote Bags.

BAG-90 #15691

holds one TS-90, TS-80, or TS-70 Speaker Stand
10-1/2" x 49-1/2" (267 mm x 1257 mm)

BAG-90D #15693

holds two TS-90, TS-80, or TS-70 Speaker Stands
14-1/2" x 49-1/2" (368 mm x 1257 mm)

BAG-99 #15692

holds one TS-99 or TS-88 Speaker Stand
10-1/2" x 60-1/2" (267 mm x 1537 mm)

BAG-99D #15694

holds two TS-99 or TS-88 Speaker Stands
14-1/2" x 60-1/2" (368 mm x 1537 mm)

- 1-year warranty on all bags.



BMB-200K LARGE MOUNTING BRACKET

#10766

External bracket securely mounts any speaker cabinet with a flat bottom on a (1-1/2") (38 mm) speaker stand tube.

Measures 4" x 6" (102 mm x 152 mm).

All hardware included for installation.

BMB-200K glass-reinforced polycarbonate fitting holds 100 lbs. (45.5 kg).

- 1-year warranty



TSM SERIES SOCKET MOUNTING BRACKETS

TSM-150MK #13421 - 1-1/2" / 38 mm tube

TSM-138MK #13425 - 1-3/8" / 35 mm tube

Internal metal bracket securely mounts any speaker cabinet with a flat bottom on a (1-1/2") (38 mm) speaker stand tube.

Diameter is 4" (102 mm).

Metal fitting holds 150 lbs. (68.2 kg).

- 1-year warranty

LIGHTING TREE

ACCESSORY PARTS

Combine these accessories with a TS-99 or TS-88 Series Speaker Stand to create a one or two tier Lighting Tree.



LTB-48B CROSSBAR

Convert an Ultimate Support TS-99 or TS-88 Series Speaker Stand into a Lighting Tree with this 4' (1220 mm) crossbar.

Dual-use bar has 4 pre-drilled holes for mounting hardware (included) and is thick-walled for use with C-clamps (not included).

- LTB-48B #14107 - black
- 3-year warranty

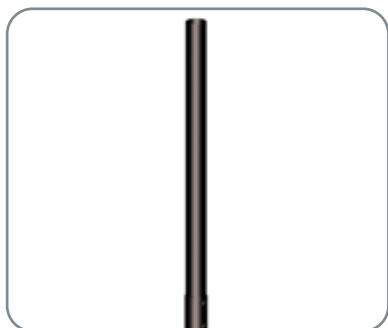


LTB-24B CROSSBAR PAIR

Convert a single tier lighting tree into a two tier lighting tree with this pair of 2' (610 mm) crossbars.

Dual-use bar has 4 pre-drilled holes for mounting hardware (included) and is thick-walled for use with C-clamps (not included).

- LTB-24B #14106 - black
- 3-year warranty



LTV-24B VERTICAL EXTENSION

Vertical Extension makes your Ultimate Support Lighting Tree 2' (610 mm) taller.

- LTV-24B #14108 - black
- 3-year warranty



STUDIO MONITOR STANDS

MS SERIES

Sleek and sturdy studio stands get your monitors at ear level.

MONITOR ISOLATION

Rubber padded platform isolates the cabinet from vibration.

STREAMLINED & CLEAN

Cable management system eliminates tedious feeding of cables and wires. Simply lay them in the open-faced channels and snap on the back cover.

ELIMINATE SOUND DAMPENING

To bypass the sound-dampening effect, metal spikes on the base corners go through carpet and padding to rest on sub-floor. For hard surfaces use rubber feet (included).

STABLE STAND

Fill the aluminum column with either shot or sand; combined with the cast-zinc base, this creates an extremely stable stand.

5-YEAR WARRANTY

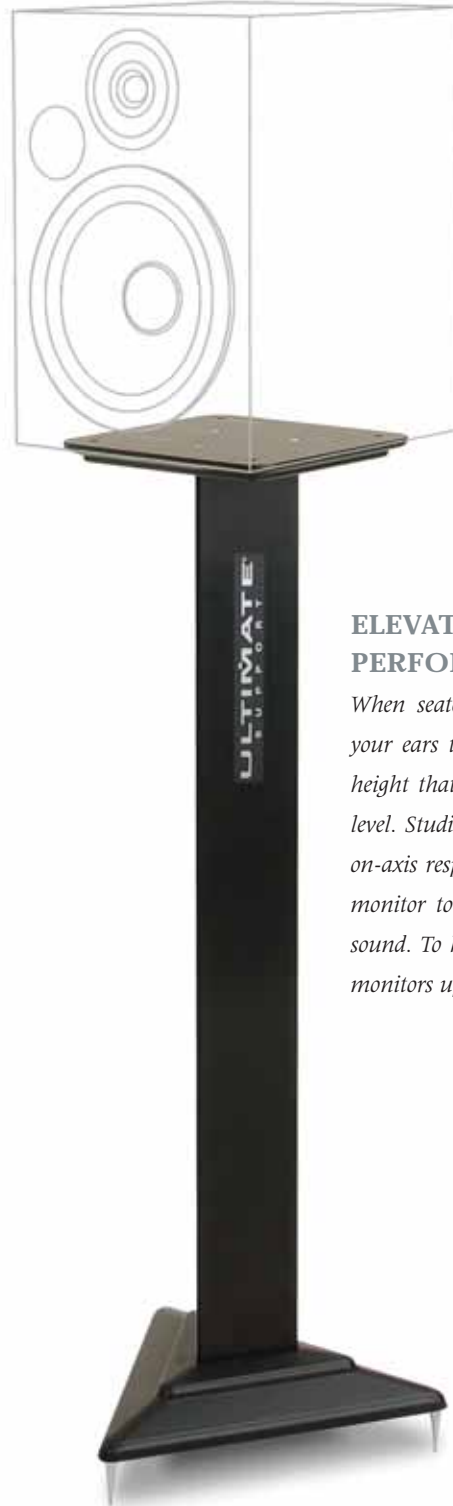
Constructed of high quality materials, backed by our award-winning customer support.

MS-36B2

- MS-36B2 #13550— black, pair
- height 36" (914 mm)
- weight (before filling column) 8.45 lbs. (3.8 kg)
- top plate 9" x 9" (229 mm x 299 mm)
- base 14" (356 mm)
- load capacity 75 lbs. (34.1 kg)
- 5-year warranty

MS-45B2

- MS-45B2 #13560— black, pair
- height 45" (1143 mm)
- weight (before filling column) 9.55 lbs. (4.3 kg)
- top plate 9" x 9" (229 mm x 299 mm)
- base 14" (356 mm)
- load capacity 75 lbs. (34.1 kg)
- 5-year warranty



ELEVATING PERFORMANCES

When seated, measure the distance from your ears to the floor and choose a stand height that places monitor tweeters at ear level. Studio monitors are designed so that on-axis response (direct parallel path from monitor to ears) yields the most accurate sound. To hear the sharpest mix, get those monitors up on Ultimate Support stands!

KEYBOARD STANDS

SELECTION GUIDE

Spec	V-Stand	Apex	Apex Plus	IQ-2000	IQ-1000
Page Number	page 11- 12	page 13-14	page 13 - 14	page 15 - 16	page 15 - 16
Design	V-Style	Column Style	Column Style	X-Style	X-Style
Versatile	● most versatile	●	●		
Stand-up Stand	●	●	●	●	●
Sit-down Stand	●			●	●
Height Adjustable	●	●	●	●	●
Width Adjustable	●			●	●
2 Keyboards	●*	●	set up for large boards	●*	●*
3 Keyboards		●*	●*		
Portable	●	●	●	●	●
Folds Compactly	●	●	●		
Easy open/close	●	●	●	●	●
Becomes own case		●	●		
Durable	●	●	●	●	●
Drawn Aluminum	●	●	●		
Anodized Finish	●	●	●		
Steel w/Powder Coat				●	●
Cable Management	●	●	●		
Foot Pedal Clearance	●			●	●
Optional Accessories					
2nd Tier	●	included	included	●	●
3rd Tier		●	●		
Shelf	●				
Mic Boom	●	●	included		
Tote Bag	●	●	●		
Warranty					
Guaranteed for Life		●	●		
5-Year	●			●	
3-Year					●
Load Capacity	250 lbs.	250 lbs.	250 lbs.	150 lbs.	100 lbs.

*Requires additional accessories

Third Day is elevated by Ultimate Support's Microphone, Guitar, Keyboard and Merchandise Stands



V-STAND™

KEYBOARDS ▲ DJ EQUIPMENT ▲ CONSOLES

The next-generation standard for live performance support.

V-STYLE STAND

Sleek design provides a distinctive look. There is no other stand like it.

HIGHLY VERSATILE STAND

Height and width adjust for optimal sitting or standing positions. Holds keyboards, DJ equipment, and consoles.

FOOT PEDAL CLEARANCE

Wide footprint for easy access to pedals.

INNOVATIVE PORTABILITY

Quickly folds into a 19" x 9.5" x 6" compact unit.

5-YEAR WARRANTY

Constructed of high quality materials, backed by our award-winning customer support.

VS-80B

- VS-80B #15949— black
- height 24.5" - 41.5" (622 mm - 1143 mm)
- width 19" x 45" (483 mm x 609 mm)
- folded size 28" x 9.5" x 6" (711 mm x 241 mm x 152 mm)
- load capacity of 250 lbs. (113.4 kg)
- weight 19.75 lbs. (8.95 kg)
- 5-year warranty

ELEVATING PERFORMANCES

The V-Stand™ accommodates DJ coffins; with its sleek new design, V-stand™ serves as a great alternative to existing DJ live performance gear support methods such as cinderblocks and tables. In addition V-Stand™ accommodates portable audio and lighting consoles.





*The Beach Boys
get good vibrations from their Ultimate
Support Keyboard and Guitar Stands*



V-STAND™ ACCESSORIES

BAG-VS80 TOTE BAG

Padded and zippered tote bag.

- BAG-VS80 #16013— black
- height adjustable up to 19" (483 mm) from attachment point
- boom length 17.8" - 31.5" (452 mm - 800 mm)
- weight 2.6 lbs. (1.18 kg)
- 1-year warranty

SH-VS80 SHEET MUSIC HOLDER/SHELF

Holds small portable equipment. Attaches to 1st or 2nd tier.

- SH-VS80 #16012— black
- surface area 15.375" x 10.75" (391 mm x 273 mm)
- height adjustable up to 14.75" (375 mm) from attachment point
- load capacity 15 lbs. (6.8 kg)
- weight 2.4 lbs. (1.09 kg)
- 5-year warranty

TR-VS80 2ND TIER

Sturdy tier is angle adjustable.

- TR-VS80 #16014— black
- height 11.5" (292 mm) from center of tier to V-Stand base
- width 7" - 45" (178 mm x 609 mm)
- support arm depth 15" (381 mm)
- load capacity of second tier 75 lbs. (34 kg)
- load capacity of total stand 250 lbs. distributed (113.4 kg)
- weight 4.6 lbs. (2.08 kg)
- 5-year warranty

MIC-VS80 MIC BOOM

Adjustable telescoping boom attaches to 1st or 2nd tier.

- MIC-VS80 #16015— black
- height adjustable up to 19" (483 mm) from attachment point
- boom length 17.8" - 31.5" (452 mm - 800 mm)
- weight 2.6 lbs. (1.18 kg)
- 5-year warranty

APEX AX-48 COLUMN KEYBOARD STAND

The original standard for live-performance support.

STURDY STAND

Column stand with locking legs is stable, even with large 88-note keyboards.

EASY TO USE

Sets up in seconds without any tools.

TRUE PORTABILITY

Folds into a self-contained, compact unit with a heavy-duty carrying handle.

MOST DURABLE

Finest materials with proven reliability.

GUARANTEED FOR LIFE

The last stand you will ever have to buy, backed by our award-winning customer support.

AX-48B/AX-48S

The original column stand comes with two standard clamps / 13" (330 mm) Tribar sets.

- AX-48B #11556—black, AX-48S #14625—silver
- height 46" (1168 mm) with angle adapter in place
- weight 19 lbs. (8.6 kg)
- folded length 52" (1321 mm)
- load capacity up to 125 lbs. (56.8 kg) per tier or 250 lbs. (113.6) total
- guaranteed for life

AX-48BP APEX PLUS

The original column stand with two popular accessories: an Apex Mic Boom plus a Super Clamp and Long Tribars to accommodate a larger keyboard.

- AX-48BP #12735—black
- height 46" (1168 mm) with angle adapter in place
- guaranteed for life

ELEVATING PERFORMANCES

Since its introduction 20 years ago, the Apex Column Keyboard Stand has been the signature keyboard product for Ultimate Support as well as the stand of choice for both professional and amateur musicians.





The Killers' Brandon Flowers slays audiences with his jewel encrusted Apex



AX-48S - Sleek matte silver finish.

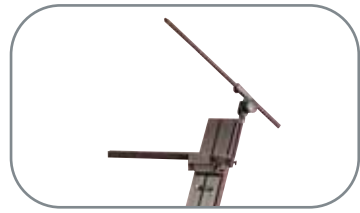
APEX ACCESSORIES



TRIBARS & CLAMPS

To assemble an Apex keyboard tier, two Tribars and one CMP-485 Clamp are needed.

- TBR-130 #11628—Standard Tribar (13") (330 mm)
- TBR-180 #11852—Long Tribar (18") (457 mm)
- CMP-485 #11853—Super Clamp for use with long and standard tribars.
- guaranteed for life



MIC-480 BOOM

- MIC-480 #15373
- Apex Mic Boom includes adapter and boom arm.
- Improved attachment with more adjustment range.
- Comes with hardware for attaching to Apex stands.
- guaranteed for life



BAG-99 TOTE BAG

- BAG-99 #15692
- Heavy-duty, padded and zippered Tote Bag. Holds one Apex Column Keyboard Stand.
- 1-year warranty

IQ SERIES X-STYLE KEYBOARD STANDS

The original "Smart" X-Stand with "Memory Lock".

ORIGINAL MEMORY LOCK

Set the stand to your optimal height and Memory Lock opens to the selected choice every time.

HEIGHT ADJUSTABLE

Six settings range from sitting to standing levels.

STRONG STAND

Sturdy double-brace stand securely holds 150 lbs. on up to two tiers.

STABLE STAND

End caps adjust to stabilize the stand on uneven surfaces.

5-YEAR WARRANTY

Constructed of durable materials and backed by our award-winning customer support.

IQ-2000

- IQ-2000 #13241—black
- height 26.5" - 36" (673 mm - 914 mm)
- width 18.5" - 33" (469 mm - 838)
- weight 15 lbs. (6.8 kg)
- load capacity 150 lbs. (68.2 kg) distributed
- 5-year warranty

IQ-1000

Single-brace version of IQ-2000 has a 3-year warranty.

- IQ-1000 #13231—black
- height 26.5" - 36" (673 mm - 914 mm)
- width 18.5" - 33" (469 mm - 838)
- weight 11 lbs. (5 kg)
- load capacity 100 lbs. (45.5 kg) distributed
- 3-year warranty

IQ-200 2ND TIER

Use as 2nd tier on IQ-2000 and IQ-1000.

- IQ-200 #13360—black
- width adjustable
- 3-year warranty



GUITAR STANDS

SELECTION GUIDE

Spec	GS-100	GS-200	GS-50
Page Number	page 18	page 19	page 20
Design	Hanging-Style	Cradle-Style	A-frame Style
Protective Velvet (Non-Reactive) Pads	●	●	
Height Adjustment Lever	●		
Leg Lock Mechanism	●	●	●
Portable Design			
Dimensions	3.5" x 21"	3.5" x 21"	3.5" x 14"
One-Piece Design	●	●	●
Secure Yoke/Safety Strap	●	●	
Guitar Pick Storage Slots	●	●	●
Weight	3.5 lbs.	3.1 lbs.	1.5 lbs
5-Year Warranty	●	●	●

*Tim McGraw & The Dancehall Doctors
are a sell out with Ultimate Support
Keyboard, Guitar & Mic Stands*



GENESIS SERIES

GS-100 GUITAR STAND

The preferred choice of top performing bands.

HANGING STYLE STAND

Height adjustable to hold every size and shape guitar and bass. Easily remove guitar without catching cable



PROTECTIVE PADS

Case-quality velvet pads protect guitar's finish.

LEG LOCK

Legs lock open and closed for worry-free stability.



TRULY PORTABLE

One-piece stand quickly folds into a 3½" x 21" unit. Take your stand anywhere and never lose parts again!



5-YEAR WARRANTY

Constructed of high quality materials, backed by our award-winning customer support.

GS-100

- GS-100 #13710—black
- set up height 33.5" - 45.5" (838 mm - 1156 mm)
- folds to 3.5" x 21" (89 mm x 533 mm)
- weight 3.5 lbs. (1.6 kg)
- 5-year warranty

Accommodates any shape & size

ELEVATING PERFORMANCES

Genesis Guitar and Amp Stands feature a unique, patented, leg-locking mechanism. When setting up the stand, unlock the legs, unfold and lock the legs in place for worry-free stability and strength. When finished with the gig, unlock the legs, fold, and lock for easy, compact portability. The ingenious leg lock eliminates "floppy leg" syndrome!



GENESIS SERIES

GS-200 GUITAR STAND

CRADLE STYLE STAND

Fold-down support arms securely hold the instrument.

PROTECTIVE PADS

Case-quality velvet pads protect guitar's finish.

LEG LOCK

Legs lock open and closed for worry-free stability.

TRULY PORTABLE

One-piece stand quickly folds into a 3½" x 21" unit. Take your stand anywhere and never lose parts again!

5-YEAR WARRANTY

Constructed of high quality materials, backed by our award-winning customer support.



MercyMe

Making their way with Ultimate Support Keyboard, Guitar and Microphone Stands

GS-200

- GS-200 #13711—black
- set up height 32" (813 mm)
- folds to 3.5" x 21" (89 mm x 533 mm)
- weight 3.1 lbs. (1.4 kg)
- 5-year warranty

Ideal for Acoustic Guitars



ELEVATING PERFORMANCES

Did you know that most expensive guitars use a nitrocellulose lacquer finish that requires special care? Because of the sensitivity of these finishes, our protective padding is a velvety surface which increases protection over standard surgical tubing, rubber or foam. Top performers trust their precious instruments in our stands!

GENESIS SERIES

GS-50 GUITAR STAND

Compact, portable stand is ideal for electric guitars.

A-STYLE STAND

Stable A-frame design securely holds different shapes and sizes of electric guitars.

LEG LOCK

Legs lock open and closed for worry-free stability.

TRULY PORTABLE

One-piece stand quickly folds into a 3½" x 21" unit.

GUITAR PICK STORAGE SLOTS

Keep extra picks close by.

5-YEAR WARRANTY

Constructed of high quality materials, backed by our award-winning customer support.



GS-50

- GS-50 #13735—black
- set up height 12.25" (311 mm)
- folded 3.5" x 14" (89 mm x 356 mm)
- weight 1.5 lbs. (.71 kg)
- 5-year warranty



GENESIS SERIES AMP-150 AMP STAND

Compact, portable amp stand.

OPTIMAL VOLUME

3 tilt positions direct the amp's sound to your ears.

LEG LOCK

Legs lock open and closed for worry-free stability of up to 75 lbs.

TRULY PORTABLE

One-piece stand quickly folds into a 3½" x 21" unit.

MIC BOOM ATTACHMENT

Threaded top tube for mic boom attachment; no need to carry an extra mic stand.

5-YEAR WARRANTY

Constructed of high quality materials, backed by our award-winning customer support.

AMP-150

- AMP-150 #13464—black
- folded 3.5" x 18" (89 mm - 457 mm)
- weight 3.1 lbs. (1.4 kg)
- 5-year warranty



*The Violet Burning
Rocks with Guitar, Amp &
Microphone Stands*

ELEVATING PERFORMANCES

Are you experiencing hearing loss or do your band members complain about your volume? Well we have a simple solution — get your amp on an Ultimate Support Amp Stand. With the AMP-150's 3 tilt positions you can tip your amp back and face it toward you, allowing you to hear the high frequencies at much lower volume levels. In addition, your sound guy will have less vocal mic bleed and better control of the FOH. End result: your band will stop threatening to unplug you!

MICROPHONE STANDS & BOOMS

SELECTION GUIDE

Mic Stand Specs	MC-125	MC-97	MC-87	MC-78	MC-40	MC-41T	MC-05
Page Number	page 23	page 24/26	page 26	page 24	page 25	page 25	page 27
Base Style							
Professional Studio w/Casters	●						
Tripod Base with Locking Legs				●	●	●	
Stackable Base		●	●				
Round Weighted Base							●
Height Adjustable	51.5" - 82.75"	40" - 68"	35" - 62"	40" - 68"	36" - 63"	22" - 31"	34.75" - 64"
Clutch Style							
One-Hand Style		●		●			
Quick Release Turn-Style	●		●		●	●	●
Boom Style							
Professional Telescoping Studio Boom	35" - 61"						
Telescoping						17.8" - 31.5"	
Fixed Length					31.7"		
Boom Adjustment							
4-degrees of Freedom						●	
3-way adjustment	●				●		
Portability/Storage							
Stackable - 6 in footprint of 1		●	●				
Folds Compactly				●	●	●	
Lightweight Design				●	●	●	
Weight	35 lbs.	9.9 lbs.	6.3 lbs.	4 lbs.	6.3 lbs.	4.625 lbs.	8.8 lbs.
Quick Release Base		●	●				●
Cable Management	●	●	●	●	●	●	●
Warranty							
Guaranteed for Life		●					
5-Year	●		●				
3-Year				●	●	●	●
Boom Specs	MCT-94T	MC-84					
Boom Style							
Telescoping	17.8" - 31.5"						
Fixed Length		31.7"					
Boom Adjustment							
4-Degrees of Freedom	●						
3-Way Adjustment		●					
Weight	1.5 lbs.	1.3 lbs.					
Warranty							
Guaranteed for Life	●						
5-Year		●					

PROFESSIONAL STUDIO BOOM

MC-125

Most stable and adjustable studio boom stand available.

EXTREMELY STABLE BASE

Larger diameter base with locking, roller blade style wheels, provide low center of gravity and extra stability.

HEIGHT ADJUSTABLE

Smoothly raise or lower height with reliable clutch; height adjustable from 51.5" - 82.75".

ADJUSTABLE BOOM

Long boom telescopes from 35" - 61"; features a friction-free clutch and arm extension. Also includes a unique, easy-adjust 5.75 lb. counterweight.

MOBILE AND PORTABLE

Roller blade style wheels travel smoothly. Threaded shaft & boom sections provide quick set-up and tear-down for easy transport and storage.



MC-125

- MC-125 #16124— black
- stand height with casters 51.5" - 82.75"
(1308 mm - 2102 mm)
- boom length 35" - 61" (889 mm - 1549 mm)
- caster diameter 3.75" (95 mm)
- base diameter 22.5" (572 mm)
- folded assembled with casters 58.75" x 22.5"
(1492 mm x 508 mm)
- weight 35 lbs. (15.88 kg)
- counterweight weight 5.75 lbs. (2.6 kg)
- 5-year warranty

ONE-HAND STANDS

MC-97, MC-78

The original manufacturer of one-hand height adjustment.

ONE-HAND HEIGHT ADJUSTMENT

Quickly raise or lower non-slip, die-cast ergonomic clutch.

STACKABLE BASE

Cut out design allows six stands to easily stack and store in the footprint of one.

QUICK RELEASE BASE

Quickly attach base with just a few turns. Self-locking pieces won't unthread unless you want them to. There has never been a simpler process.

HEAVY-DUTY FINISH

Enamel coating resists rust and scratches.

CABLE MANAGEMENT

Simply snap cables into place.

MC-97

- MC-97 #15307—black
- height 40" - 68" (1016 mm - 1727 mm)
- weight 9.9 lbs. (4.5 kg)
- guaranteed for life

ELEVATING PERFORMANCES

You can actually feel the quality and innovation built into Ultimate Support's one-hand clutch, featured on MC-78 and MC-97. The telescoping tube extends through the clutch housing creating a solid feel to this durable mechanism. Squeeze the clutch, releasing the internal friction mechanism; raise or lower the smooth sliding telescoping tube to set your height; release the clutch and the internal lock engages for secure and reliable adjustment.

ONE-HAND HEIGHT ADJUSTMENT

Quickly raise or lower non-slip clutch.

LOCKING LEGS

Stable stand has a durable resin base and legs that lock into place.

HEAVY-DUTY FINISH

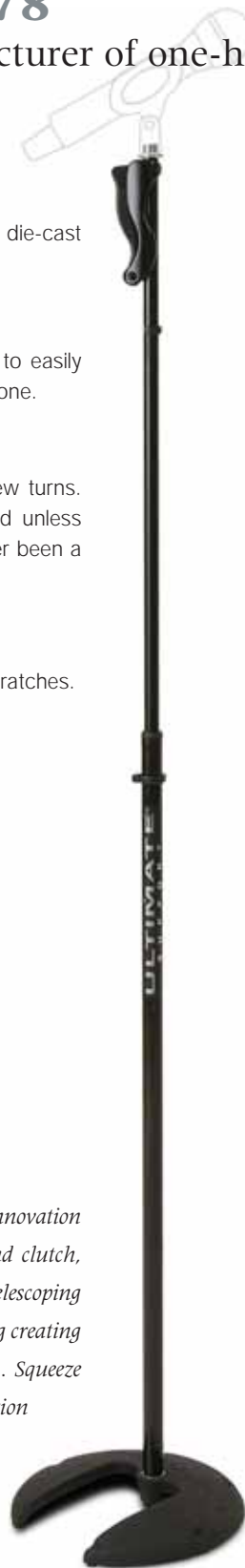
Enamel coating resists rust and scratches.

CABLE MANAGEMENT

Simply snap cables into place.

MC-78

- MC-78 #15308—black
- stand height 38.5" - 68" (986 mm - 1735 mm)
- weight 4 lbs. (1.82 kg)
- 3-year warranty





*G-Love & Special Sauce
The "Masters of the One-Hand Clutch"*

MIC STAND & BOOM PACKAGES

MC-40 AND MC-41T

Strong, stable and dependable.

EASY ADJUST BOOM

3-way adjustment tightens with just one knob.

SECURE CLUTCH

Smoothly raise or lower height with reliable clutch.

LOCKING LEGS

Stable stand has a durable resin base and legs that lock into place.

CABLE MANAGEMENT

Simply snap cables into place.

MC-41T

Low-level version with a telescoping boom.

- MC-41T #15350—black
- stand height 22" - 31" (559 mm - 787 mm)
- telescoping boom 17.8" - 31.5" (452 mm - 800 mm)
- weight 4.625 lbs. (2.1 kg)
- 3-year warranty

MC-40

- MC-40 #15159—black
- stand height 36" - 63" (914 mm - 1600 mm)
- boom length 31.7" (805 mm)
- weight 6.3 lbs. (4.2 kg)
- 3-year warranty



STACKABLE MIC STANDS

MC-97 & MC-87

The original stackable base.

ONE-HAND HEIGHT ADJUSTMENT

Quickly raise or lower non-slip, die-cast ergonomic clutch.

STACKABLE BASE

Cut out design allows six stands to easily stack and store in the footprint of one.

QUICK RELEASE BASE

Quickly attach base with just a few turns. Self-locking pieces won't unthread unless you want them to. There has never been a simpler process.

HEAVY-DUTY FINISH

Enamel coating resists rust and scratches.

CABLE MANAGEMENT

Simply snap cables into place.

MC-97

- MC-97 #15307—black
- height 40" - 68" (1016 mm - 1727 mm)
- weight 9.9 lbs. (4.5 kg)
- guaranteed for life



STACKABLE BASE

Cut out design allows six stands to easily stack and store in the footprint of one.

SECURE CLUTCH

Smoothly raise or lower height with reliable clutch.

QUICK RELEASE BASE

Quickly attach base with just a few turns. Self-locking pieces won't unthread unless you want them to. There has never been a simpler process.

HEAVY-DUTY FINISH

Enamel coating resists rust and scratches.

CABLE MANAGEMENT

Simply snap cables into place.

MC-87

- MC-87 #15078—black
- height 35" - 62" (889 mm - 1575 mm)
- weight 6.3 lbs. (4.2 kg)
- 5-year warranty



ELEVATING PERFORMANCES

The cut-out of the cast iron base allows six MC-97's or MC-87's to stack in the footprint of one. Each stand interlocks with the one underneath for convenient transport and storage.



WEIGHTED-BASE STAND BOOMS

MC-05, MCT-94T & MC-84

Reliable, heavy-duty, adjustable stands and booms.

SECURE CLUTCH

Smoothly raise or lower height with reliable clutch.

WEIGHTED BASE

Sleek, triangular, cast-iron base is very stable and sturdy.

QUICK RELEASE BASE

Quickly attach base with just a few turns. Self-locking pieces won't unthread unless you want them to. There has never been a simpler process.

HEAVY-DUTY FINISH

Enamel coating resists rust and scratches.

CABLE MANAGEMENT

Simply snap cables into place.



MCT-94T TELESCOPING BOOM

Telescoping version.

- MCT-94T #15056— black
- boom length 17.8" - 31.5" (452 mm - 800 mm)
- weight 1.5" lbs. (.68 kg)
- guaranteed for life

MC-05

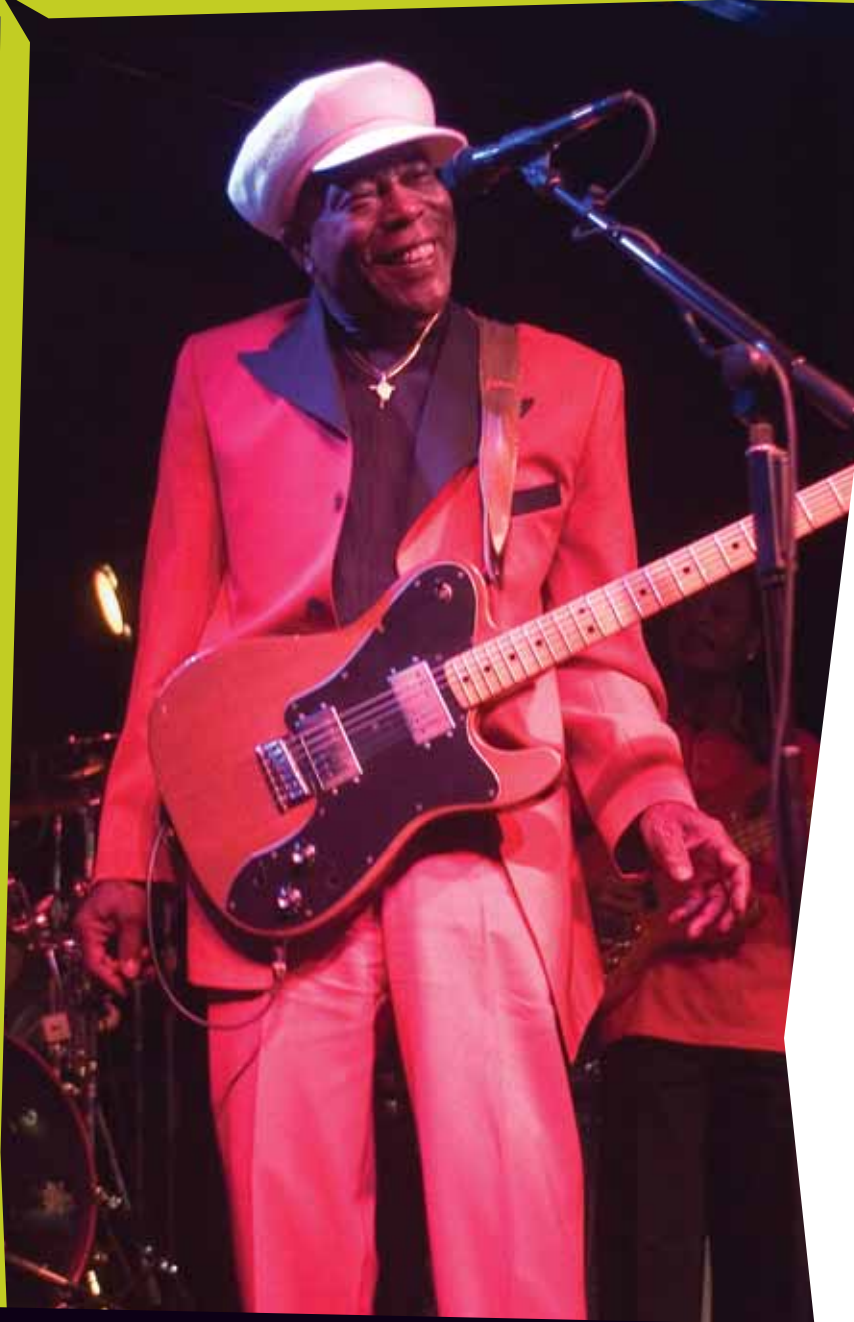
- MC-05 #13461—black
- height 34.75" - 64" (883 mm - 1626 mm)
- weight 8.8 lbs. (4 kg)
- 3-year warranty



MC-84 FIXED-LENGTH BOOM

3-way adjustment tightens with just one knob.

- MC-84#15056— black
- boom length 31.7" (805 mm)
- weight 1.3" lbs. (.59 kg)
- 5-year warranty



Front Cover:

Cheche Alara - Producer, Musical Director, Keyboardist for American Idol, Christina Aguilera, Pink, Alejandro Sanz and more - www.chechealara.com

Sonny Sandoval of P.O.D.

Rachel Z - Keyboardist with Peter Gabriel, Dept of Good and Evil, and Amplify

Red Rocks Amphitheater - Morrison, CO

Tim McGraw & Faith Hill

Sully Erna of Godsmack

Kevin Antunes - Musical Director & Keyboardist for Justin Timberlake and The Backstreet Boys

Back Cover:

Buddy Guy

Crystal Lewis

Steel Pulse featuring Selwyn Brown & David Hinds

Martin Smith of Delirious?

Michael Ghegan - Saxophonist for Keiko, Justin Timberlake and The Backstreet Boys

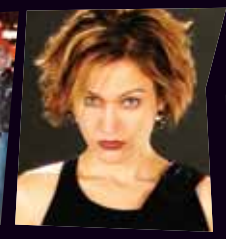
Drew Davis Band

Alex Bach

Soulive

Buddy Guy is a legend with his Ultimate support guitar and microphone stands.

Photo by Paul Natkin



ULTIMATE[®]
S U P P O R T

Ultimate Support Systems, Inc.

P.O. Box 470 . Fort Collins, CO 80522-4700

2506 Zurich Drive . Fort Collins, CO 80524

Toll-free 800-525-5628 . Phone 970-493-4488

Fax 970-221-2274 . www.ultimatesupport.com