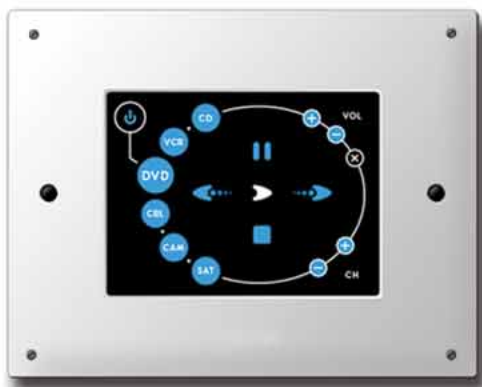


CSPLCD39GW 3.9" TOUCHSCREEN CONTROLLER



FRONT



BACK

The CSPLCD39GW is a self-contained, interactive touchscreen controller allowing simple, user-friendly control of virtually any infrared or RS232 controlled device or system.

The screen image, with its 320 x 240 resolution delivers excellent graphic resolution and clarity. The display graphics are fully customizable. The installer can create custom backgrounds and control buttons to provide a unique display customized to the customer's needs. Background possibilities might be a company's logo, a picture of their building, or virtually any other image desired.

Serial output is via RS422, allowing a cable run of up to 4000 feet, while the optional RS422232 converter allows interface with serial RS232 controlled devices. The CSPLCD39GW, when combined with Xantech's new RS2321X8 serial router, allows direct control of up to eight serial controlled devices.

The CSPLCD39GW controls audio, video, projection, screen and drapery, lighting, HVAC, security, and virtually any IR or serial-controlled device. It provides a convenient, straightforward solution for the control of classrooms, worship centers, conference rooms, boardrooms and sports bars.

Features include:

- Stand-alone device to output IR and/or RS232 commands
- Internal pre-programmed IR code library, as well as capability to learn IR commands
- Built-in IR receiver
- Programmable via Dragon Drop-IR™ software
- Front panel IR learning eye
- Password protected screen activation (software configurable)
- Security anti-theft bezel
- Fully compatible with CM8X8CTL A/V controller with bi-directional status indication
- Front panel programming interface with RS232 and USB connection
- Front panel contrast and brightness control
- IR pass through to standard Xantech IR bus, as well as IR expansion bus
- Voltage triggered sequencer with both high and low triggers
- Adjustable viewing angle (software configurable)
- Ideal for podium mounting



DATA SHEET

CSPLCD39GW 3.9" TOUCHSCREEN CONTROLLER

TECHNICAL SPECIFICATIONS:

DISPLAY TYPE:

- Display type: Graphic, Passive Matrix (STN)
- Screen size: 3.9" diagonal
- Screen resolution: 320 x 240 pixels
- Screen colors: 256
- Screen Illumination: CCFL Backlight

CONNECTIONS:

- RS232: RJ45
- Infrared: RJ45 and WECO terminal
- Programming: USB and RS232

DIMENSIONS:

TOUCHPANEL:

- Height: 3.75" (9.53cm)
- Width: 5.5" (13.97cm)
- Depth: 2" (51mm)
- Weight: 1.10lbs (.5 kg)

BACK BOX CUTOUT DIMENSIONS:

Cutout template included with panel;
May be ordered separately, p/n 08187156

- Height: 4" (101.6mm)
- Width: 5" (127mm)
- Depth: 3.51" (89mm)

ENVIRONMENTAL:

- Temperature: <50°C
- Humidity: <80% RH

POWER REQUIREMENTS:

- 16VDC, 800mA

INTERNAL MEMORY:

- 2MB

INCLUDED ACCESSORIES:

- SPLCDPS1 power supply for touchpanel
- White bezel
- Back box, mounting hardware and cutout template
- RS422232 Module
- 781RG power supply for RS422232 Module
- Dragon Drop-IR™ software
- Programming cables (USB and RS232)
- Installation Instructions

OPTIONAL ACCESSORIES:

- SPLCDCB100: Provides for integration into existing IR network
- RS2321X8: Allows control of eight serial control devices
- IPRS23202: Enables serial commands to be sent through IP network
- CM8X8DR: Provides A/V control over eight devices through eight zones
- CC62: Allows six contact closures

APPROVALS AND CERTIFICATIONS:

- UL6500
- IEC65000
- CE
- C-Tick
- FCC Part 15