

ASHLY

pe

peseries amplifiers



ASHLY **pe**series high performance amplifiers

Ashly's PE Series

Featuring the superior audio quality and reliability you've come to expect from Ashly, our PE Series intelligently incorporates everything you need to interface with virtually any analog or digital equipment. We've even included future-proof expansion ports. No add-ons. No awkward fixes. Truly modern amplifiers that address the needs of today's professionals.

Protea^{ne} Enabled

Set up, control and monitor PE Series amplifiers using standard, inexpensive, readily-available Ethernet hardware. Nothing proprietary here! Control from one to hundreds of amps, as well as your Protea Series processors, on- or off-site with our intuitive and friendly Protea^{ne} Software.

Wide Power Range

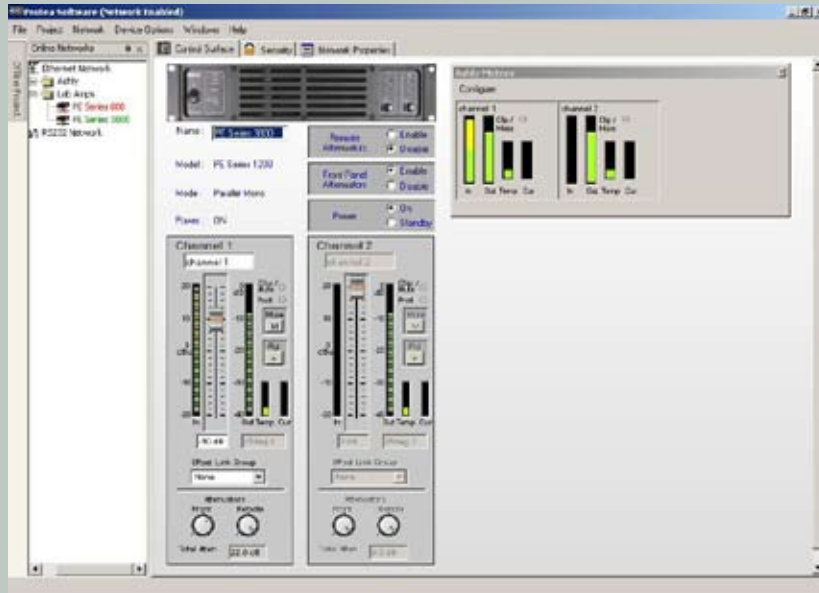
There are six models of PE Series amplifiers, all of which share the same PE feature set, and cover a wide range of power requirements from 400W to 1900W per channel. Each utilizes a 2-stage high-efficiency switched mode power supply, which provides a high-power-to-weight ratio. All are two rack units high and weigh less than 24lbs!

On-Board Processing and Indicators

Each PE Series amplifier provides on-board analog processing, including a selectable subsonic filter, a selectable clip-limiter and an input-sensitivity selector, which can optimize the amplifier for its load and the many devices that can drive it. Plus, we've included an array of output current and temperature indicators to monitor various operating parameters. It's easy to tell at a glance, for example, the status of the load being driven. It's a snap to control volume from the front panel, remote locations, or Protea^{ne} software. Remote Power Turn-on/-off with sequential power on/off circuitry is built right into the amplifier.

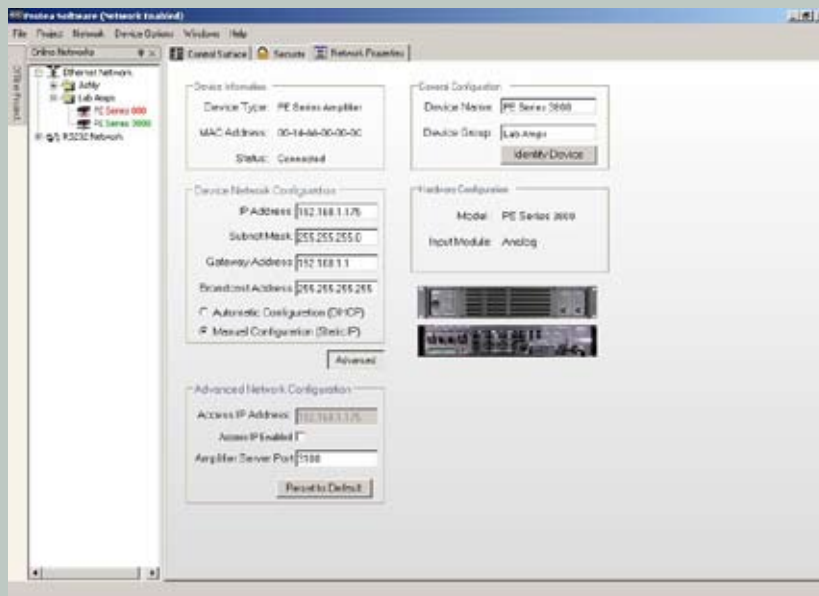
Future-Proof

Need more? Protea^{ne} DSP Cards can be installed as needed. Their SHARC 32-bit/96kHz processor enables 24-bit AD/DA, analog and digital (AES/EBU) inputs. Each offers two additional processed output channels to drive additional amplifier channels. These cards have an extensive DSP library.



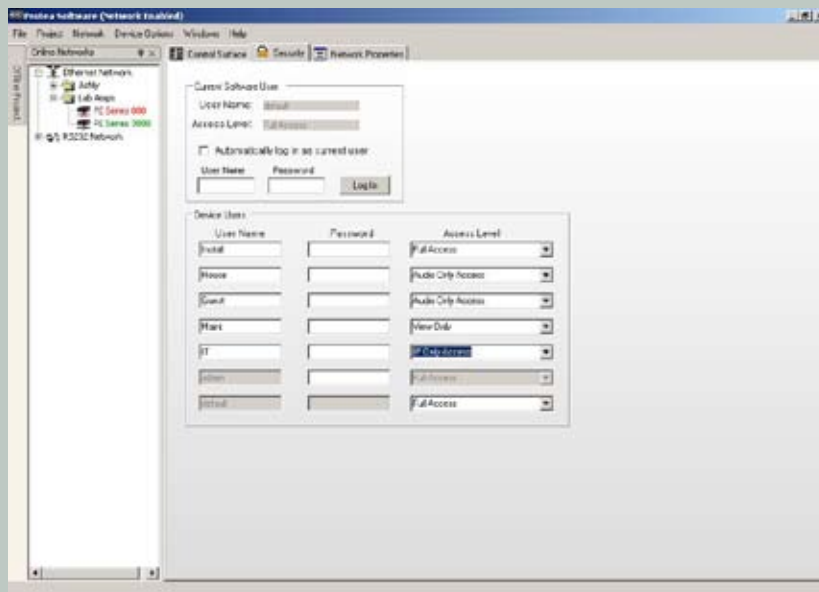
Control Screen

Simple and easy set up, control and monitoring of your system, either on site or from anywhere in the world. It's browser-based for easy navigation and no need to install custom drivers. Control and monitor your entire sound system network – set levels, enable/disable front panel and remote attenuators, power on/standby, mute, monitor in/out levels, temperature and current.



Network Control

Allows you to set up your system – automatically! Network Control will assign all your IP addressing – no advanced IT or programming degree needed. Or, if you wish, you can set up your system manually, allowing you to isolate your audio gear from everything else on the network.



Security Control

Gives you flexibility to determine who has access and to define the limitations of that access.

Functions include:

View Only Lets someone see what's going on but does not allow them to tamper with the settings

IP Only Lets the network personnel set up the network or subnetwork and inhibits their ability to become an audio engineer

Full Audio Full control of all audio functions only

Unrestricted (Full) Full control of all functions

The PE DSP Card

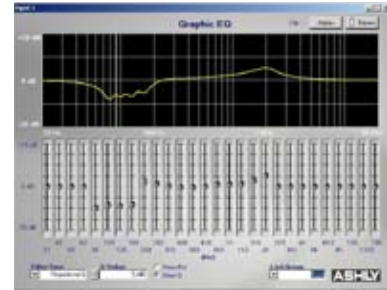


Think the PE Series is powerful on its own? Just wait until you add the optional DSP card. With it, you can make quick work of just about any signal processing task you can imagine. Equalization, filters, mixer, gate, compressor/limiter and network control, make the PE Series amplifier with the DSP card perfect for many applications from live sound, to commercial sound reinforcement to installations.

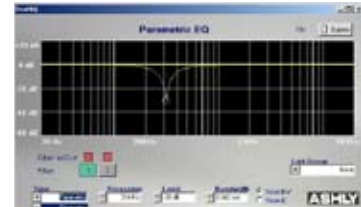
Features include:

- DSP processing on 2 input x 4 output channels (2 amp channels + 2 aux channels). One card controls two amps!
- AES3 digital audio input is standard.
- Sharc 200MHz 32-bit floating-point processor.
- 32-bit processing, 48 kHz or 96 kHz operation
- Ethernet control of everything (auto IP configuring).
- "Click and Hot-Plug" user selectable processor blocks.
- Full set of filter types include graphic, parametric, notch, shelving, high/low/allpass.
- Time delays, limiters, gates, signal generators (white, pink noise, sinewave), matrix mixer.
- Crossover filters of all types up to 48dB/octave.
- 3 contact closure preset recall, DC remote attenuators and remote power-down.
- Analog and Digital inputs
- Remote attenuator port
- Remote standby port
- Separate versions for XLR or Euroblock inputs

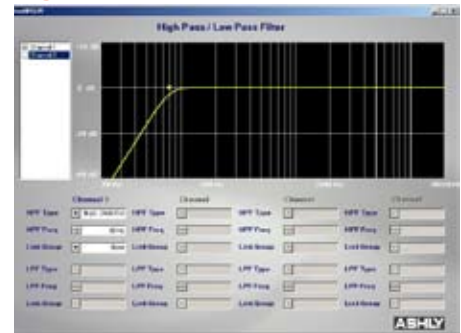
Graphic EQ



Parametric EQ



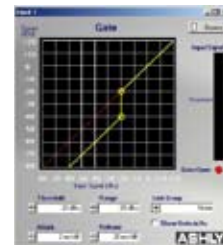
High Pass/Low Pass Filter



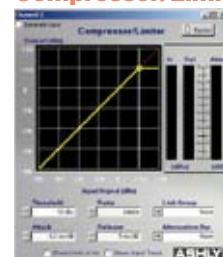
2 x 4 Mixer



Gate



Compressor/Limiter





Ashly has long believed that the secret to great sound and reliability is intelligent design and meticulous execution. Our PE Series takes that philosophy and multiplies it ten-fold. Optimized for cool operation, modularity, ultimate compatibility and maximum performance, the PE Series is the amplifier line you've been waiting for.



| Power Model | Stereo | | | Mono Bridge | | Parallel Mono |
|-------------|--------|--------|--------|-------------|--------|---------------|
| | 8 ohms | 4 ohms | 2 ohms | 8 ohms | 4 ohms | 2 ohms |
| 3800 | 1100W | 1900W | 1500W | 3800W | 3000W | 3800W |
| 3000 | 900W | 1500W | 1500W | 3000W | 3000W | 3000W |
| 2400 | 700W | 1200W | 1500W | 2400W | 3000W | 2400W |
| 1800 | 500W | 900W | 1400W | 1800W | 2800W | 1800W |
| 1200 | 300W | 600W | 1100W | 1200W | 2200W | 1200W |
| 800 | 200W | 400W | 700W | 800W | 1400W | 800W |

ASHLY

peseries amplifiers



Ashly Audio Inc. • 847 Holt Road • Webster, New York 14580 • (585) 872-0010 • (800) 828-6308
www.ashly.com • email: info@ashly.com • fax: (585) 872-0739