

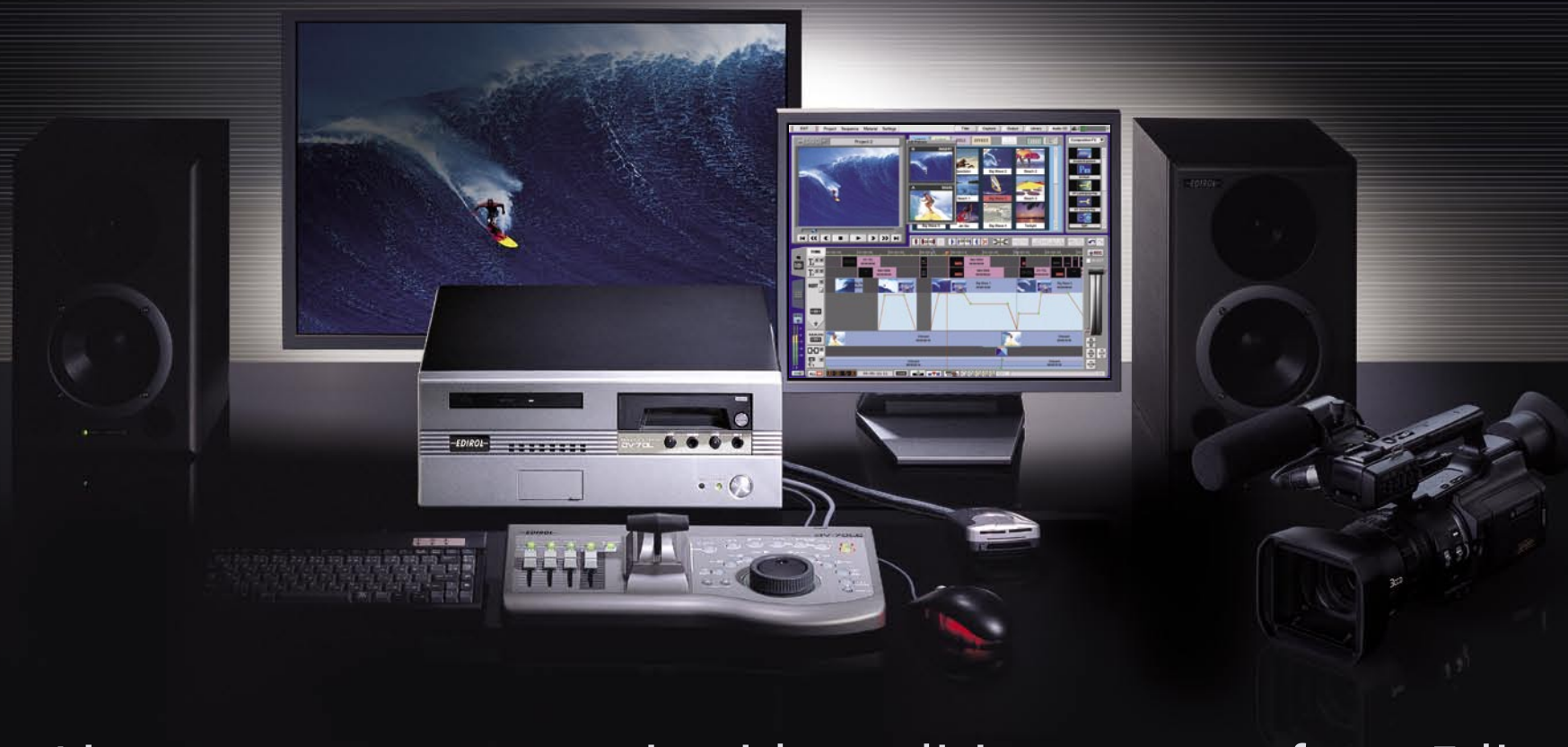
EDIROL

# Direct Linear

DV-7DL

DV-7DL PRO

Digital Video Workstation



Direct Linear, a new concept in video editing systems from Ediol.

DV-7DL  
DV-7DL PRO  
Digital Video Workstation

# Welcome to the world of stress-free editing — Direct Linear.

# **Direct Linear**

With a direct feel for edits, a more intuitive editing process is at the heart of the Direct Linear concept.

With a focus on creativity and productivity, Direct Linear editors from Edirol bring outstanding stability, ease-of-use and expressiveness. They offer a world without loss or interruption that combines the feel of linear editing with the flexibility of non linear editing. A world where the edit comes first, where the feel is real.



## **World leading** Non-stop editing.

Enables on-the-fly editing while playing full frame DV. Relocate and insert material and apply Dissolve, Wipe, Tinting, Keyer in real time without stopping.

## **Support for the PC.**

DV-7DL/DV-7DL PRO can be directly connected to Windows or Macintosh computers with an IEEE1394 connector. It can also support a card reader for the import or export of still pictures, audio, or graphics data.

## **World leading** Intuitive A/B Roll editing.

Enables you to mix or switch, in real time, between two video sources which were recorded simultaneously in a multi camera shoot. Production time can be drastically reduced and creativity enhanced.

## **Dependable file management.**

Maximizing productivity, the DV-7DL/DV-7DL PRO offers very secure file management. With constant backup of your project, your work is safe even through extended work periods and accidental power loss.

## **Maximizing the digital camera.**

Apply zoom, pan, and highlighting effects (DV-7DLPRO only) to still images. Readily creating motion from still images enhances the creative options from within a single editing system.

## **Ease-of-use.**

Knowledge of an OS or special skills for configuring and maintaining a PC are not required. The DV-7DL/DV-7DL PRO allows you to fully concentrate on your video editing. Limited screen changes and a dedicated controller all support your productivity.

# DV-7DL/DV-7DL PRO supports the pursuit of excellence in editing as a stand-alone machine.

As a stand-alone machine, the DV-7DL/DV-7DL PRO offers no compromise in operation, high quality video, maximum expression and reliability. Benefits include professional, stress free, operation and timely results. Avoiding downtime and supporting creativity is the way to go.



**■ CD-ROM Drive**  
Enables the import of audio, still images, DV stream (.DV) files and program updates.



## ■ DV and USB connections

Immediate front access to a DV connector for a digital video camera and 2 USB connectors for DV-7DL peripherals and select Edirol MIDI devices.



## ■ Video Editing Controller DV-7DLC

Included in the DV-7DL PRO and optional for the DV-7DL. The controller supports greater interaction with the editing interface.

## ■ Audio Faders

Control the audio level on the Timeline Palette in each track or all tracks.



## ■ T-Bar and function buttons

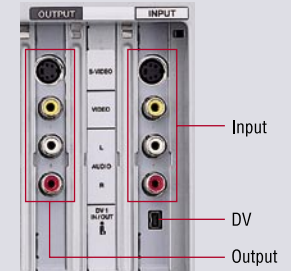
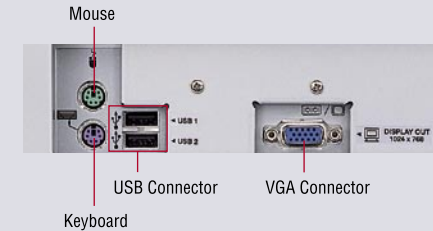
The T-Bar can easily scale the Timeline Palette by zooming in or out. The Jog/Shuttle Dial can scrub or move video forward or backward. Various buttons can set in/out points, punch in/out points, maker points and others.



## ■ Removable Hard Disk (optional)

In addition to the internal hard disk (approximately 5-hour recording), the optional removable hard disk can record for approximately 9 hours and provide additional flexibility for file management.

## ■ Rear Panel



## ■ Monitor Display required

A monitor display is needed for video editing with DV-7DL/DV-7DL PRO. Use a monitor with support for XGA (1,024x768 dot) display and a miniD-sub 15pin connector.



## ■ ASCII Keyboard (not included)

Useful to name material or projects. You can also use the function keys to scale the Timeline Pallet.



## ■ Mouse

Although operation is enhanced with a keyboard and controller, most operations can be done with the included optical mouse alone.



## ■ Card reader

Included in the DV-7DL PRO and optional for the DV-7DL, the reader supports multiple media for the import of digital still images, text data, or animation files.

## ■ Supports

● Compact flash card ● Micro Drive ● Smart Media  
● MMC ● SD Card ● Memory Stick

## Basic Direct Linear Editing System

### DV-7DL Digital Video Workstation

#### ■ Accessories

Optical mouse, Mouse pad, and IEEE1394 cable.



## Advanced Direct Linear Editing System

### DV-7DL PRO Digital Video Workstation

#### ■ Accessories

Controller DV-7DLC (USB cable included), Card reader DL-CR1, Optical mouse, Mouse pad, and IEEE1394 cable.



## Upgrade Kit to DV-7DL PRO from DV-7DL

### DV-7DL Upgrade Kit

#### ■ Accessories

Controller DV-7DLC (USB cable included), Card reader DL-CR1, Upgrade CD-ROM.





# Non-stop editing provides continuous creativity. Most operations can be done from a single menu!

The world leading first Non-stop editing system makes it easy to edit your ideas while playing back the video. In addition, most of the operations can be made from a single user-friendly edit menu screen.

## The Titrer enhances the creativity and quality of your video.

Real Time

DV-7DL offers two title tracks, each supporting separate titles. You can also create a variety of titles by using the "Text" function that offers multiple fonts and styles: the "Graphic" function that offers a straight line, curved line, ellipse, and square formats; the "Background" function that offers your choice of background images; and the "Title in/out" function that sets the points of title in and out. Additionally, picture images and text can be imported using a memory card, CD-ROM, or PC. The Titrer supports 16:9 wide screen mode.

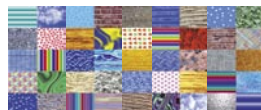
### Enabling flexible and professional title design.



Freely change size or position of text or objects. Also change color, gradation, transparency, and edge characteristics. Apply effects such as shadow and blur.



**A variety of fonts available.**  
Formal fonts like Gothic and Arial are included, as well as several casual fonts.



**Texture.**  
Enhance titles and graphic objects by applying textures such as metal, stone, or leaves

### Hi resolution, stable, text.



### Import and key images (DV-7DL PRO only).



### Capture video as a background.



### Overlay straight and curved lines.



## Story Board editing window.

Real Time

With the Story Board window you can create an outline by assigning and relocating video clips with a simple mouse operation. After making a rough outline, you can finesse the project in the Time Line window.



## A/B Roll Edit (DV-7DL PRO only).

Real Time

With a single click from the editing screen, the A/B Roll editing menu appears. You can edit a multiple camera video shoot for the feel of a live video mix. See page 5.

## Preview Monitor.

Real Time

Select from playback, 1-frame forward/backward, or 10-frame forward/backward instantly. Preview screen is combined with edit screen for maximum efficiency.

## Material Palette.

Video and audio material as well as still images and titles are automatically sorted by type. A check mark on the thumbnail of any material shows whether it is used in the project sequence. When double-clicking the thumbnail a full clip editing window appears displaying; name, comments, in/out point and color correction.



## Audio Level Meter.

Real Time

The fast stereo audio level meter allows for accurate peak monitoring in real time.

## Track Mute.

Real Time

Mute video, audio, title and transition tracks instantly. Provides flexible review or focused edits on select tracks.

## DV Auto Split Capture and Motion Effects.

DV Auto Split Capture saves editing time and hard drive space. Motion Effects like Slow Motion, Fast Motion, Reverse, Strobe and Afterimage can be easily applied. With the single frame capture function you can create an animation effect from the capture of a single frame of video.



**Capture Window.**  
Supports DV Auto Split Capture as well as normal capture.

## With the single frame capture feature, an animation effect can be created.



## Variety of filter effects included.

Filter effects can add character and interest to your video. The DV-7DL and DV-7DL PRO offer a wide variety including: Mirror effect that reverses left and right, Fish-eye effect that gives the look of video captured through a special lens, and the Mosaic effect (which supports key frame and the Color effect).

### Nostalgia



### Blur



### Fish-eye (DV-7DL PRO only)



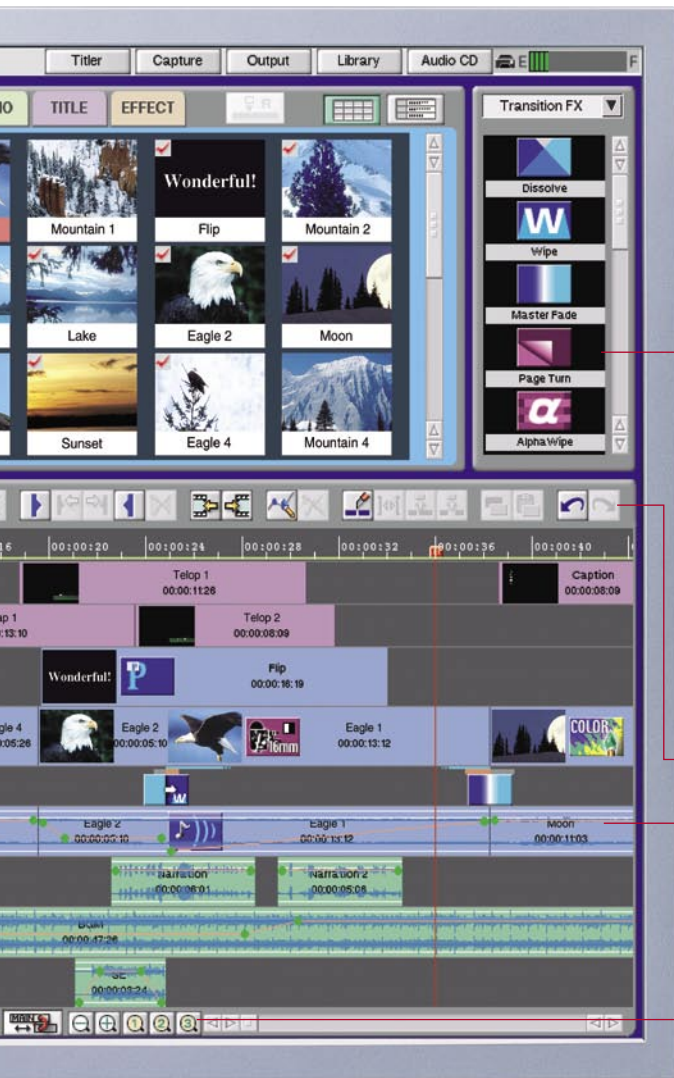
### Reverse (DV-7DL PRO only)



### Mosaic (supporting key frame)

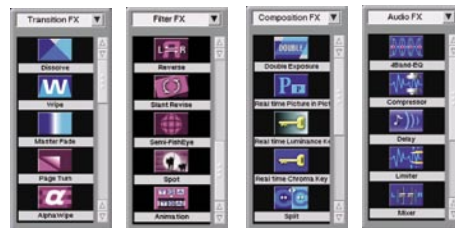






## Effects Palette.

A variety of real time effects are available including Double Exposure, Picture in Picture, or Key Composition. The effects are categorized into 4 types: "Transition", "Filter", "Composition", and "Audio". In addition graphic icons assist your choice of effect. Just click the effect you want and drag and drop it to the position you want for non-stop video editing.



## 4 Audio Tracks.

Simultaneous audio recording, narration, BGM, or sound effect can be made in the individual track. Audio scrub as well as stereo audio wave display are supported. You can make strict video editing even in case of slowmotion or a single frame while listening to the audio.

## Advanced composition effects.

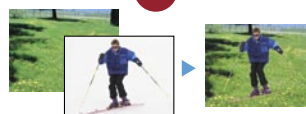
The Split function displays 2 different videos together, top and bottom or side by side. Supporting key framing, this feature is ideal for coaching videos for school, music, and sports. You also get other advanced effects such as Picture In Picture with support for key frame.



## Sprit.

With key frame you can trim adequately even in fast motion sequences-the object is continuously positioned in the center of the frame.

## Key Composition.



Luminance Key (black and white) and Chroma Key (blue background) are available.

## Picture in Picture supporting key frame.



You can move the position and change the size of the insert video.

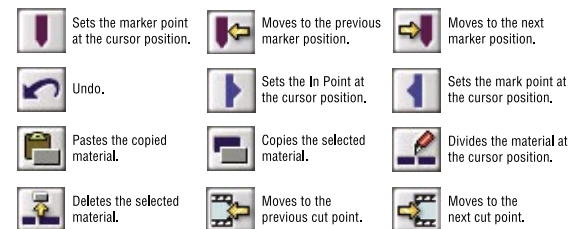
## Double Exposure.



An impressive effect that layers two images with variable transparency is available.

## Intuitive Editing Buttons.

With a single click you can intuitively copy, paste, place in/out and marker points and other frequently used functions.



## Assigned function buttons.

Get immediate access to popular editing features including pre-set zoom levels and insert functions allowing overwriting, lock to main track or independent track insert as well as audio scrubbing and all track select.



## Variety of advanced transition effects included.

Create 3D transitions such as Page Peel, Flight or select from over 100 types of Alpha Wipe and Cross Zoom.

### Cross Zoom



### Zoom Flip



### Cross Zoom



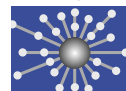
### Cross Mosaic



### Swap



### Diffusion (DV-70LC PRO only)



## Alpha Wipe (102 types)



## Page Peel



## Flight

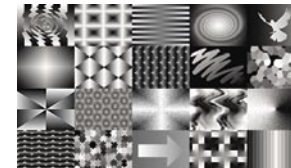


## Transition Effect Window



Precise length or level of transition effects can be set frame by frame.

## Alpha Wipe Patterns



102 types of Alpha Wipe can create vast variety of transition effects.

# A/B Roll Editing with the DV-7DL PRO and the T-Bar controller offers the intuitive feeling of linear editing.

Intuitive A/B Roll Editing is a key feature of Direct Linear where you can clearly feel the evolution of the Direct Linear concept. Two different video sources can be edited directly and simultaneously in 100% real time offering the live feel of linear editing.



## ■ Preview Monitor

The video results of A/B Roll Editing are shown in real time.

## ■ A/B Preview Monitor

The main video and insert video are shown above each other. You can control the timing of a transition by using the T-Bar.

## ■ Insert Time Line

The Time Line of Insert video on track B can be reviewed.

## ■ Main Time Line

The Time Line of Main video on A track is shown.

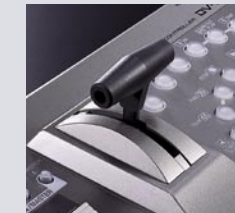
## ■ A/B Roll Editing button

The A/B Roll Editing window can be changed between Story Board or Time Line style.



## ■ T-Bar

You can use a mouse for precise control of the T-Bar to set the timing or speed of transitions. Of course you have the same result with the DV-7controller (included in DV-7DL PRO).



## ■ A/B Control Line

Once Insert video on Track A has been inserted into Main video on Track B, a control line appears. The line can be edited or a new mix can be made. By monitoring the video, you can adjust each point on the control line with a mouse.

## ■ New Intuitive A/B Roll editing style supporting multiple cameras.

Two different video sources shot by multiple cameras simultaneously can be edited in realtime like live video mixing. While watching the actual video result in the Monitor window, you can edit with the T-Bar control. In addition this process is made in 100 % realtime, so you can drastically cut your editing time. Furthermore you can edit again and again. This is suitable for concert, wedding, sports, or presentation that multipul cameras are well used.

## ■ You can edit the A/B data.

The control line appears after you finish the A/B Roll editing. You can see the result graphically. Also you can change the line by dragging the point that you want to edit. By changing the degree of the line, you can modify timing or speed again and again.



Only Main video appears.



Main video and Insert video are mixed.



Only Insert video appears.



# Create vivid movement and depth from still images.

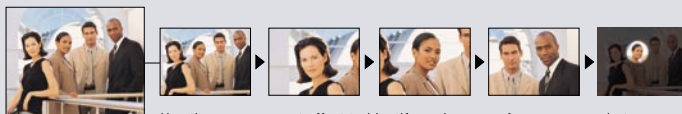
## Versatile expression from still pictures.

Photos from a digital camera or still images imported directly from CD-ROM or card reader can be brought to life.

Transition between specified points in a photo, or zooming or panning to a point can be achieved. By making these movements sequentially, you can create a very natural and vivid movie or scene.



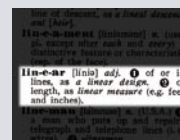
Using Zoom, a series of close up shots from a single photo can create an impressive sequence.



Use the zoom or spot effect to identify each person from a group photo.

## Spot effect can be used sequentially (DV-7DL PRO only).

With the Spot effect, you can highlight a specified point or area. For example, the text line of a document is highlighted for improved eye tracking.



## A new tool for creating movement from still pictures.

Create a moving picture from a photo or still image with the Zoom, Pan, and Spot effect. Use this technique to enhance your projects for memorials, travel logs, documentary video, or wherever still image content must be featured or incorporated.

## Supports 5 mega pixel high resolution pictures.

The quality of digital cameras is improving. DV-7DL and DV-7DL PRO support the import of 5 mega pixel high quality still picture image. This resolution provides lots of flexibility for the use of the Zoom effect. It is capable of making DV type quality of moving pictures.

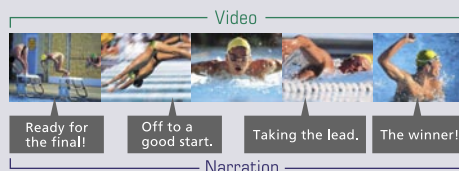
## Simulating the camera style of professional videographers.

Pre-programmed Zoom and Pan effects simulate the know-how of professional camera operators. The motion of zooming is very natural, including consideration of acceleration and speed at the beginning and end of a Pan or Zoom.

# Perform Audio Editing or apply Narration while watching the video or audio scrub editing.

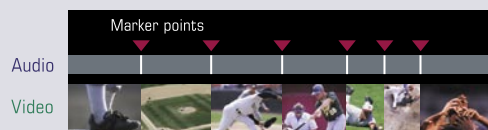
## Voice Over Feature.

In support of the Direct Linear concept, you can use the Voice Over feature to insert narration with perfect timing while playing the video. You can make narration in a sequence with the video or adjust the timing later.



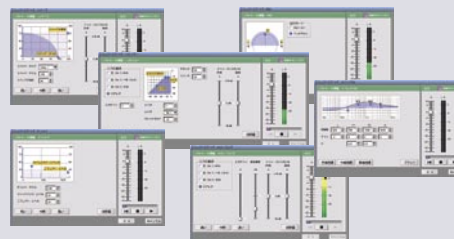
## Audio based Editing, video follows the audio.

Click the mouse in rhythm to the music or narration to set the Marker Points. Add the video clips between the Marker Points and you get a professional and rhythmical sequence in sync to the beat of the music.



## Variety of advanced real time effects for audio and music.

Audio editing can be made and reviewed in real time. Advanced audio effects include the Roland RSS 3D effect with its graphical edit window.



## 4 Audio Tracks and a variety of audio effects enable advanced audio editing.

The 4 audio tracks will support simultaneous recording, narration, BGM, and individual audio effects. Available audio effects include; Roland RSS 3D effect, a 4 band EQ, Compressor, or a Reverb.

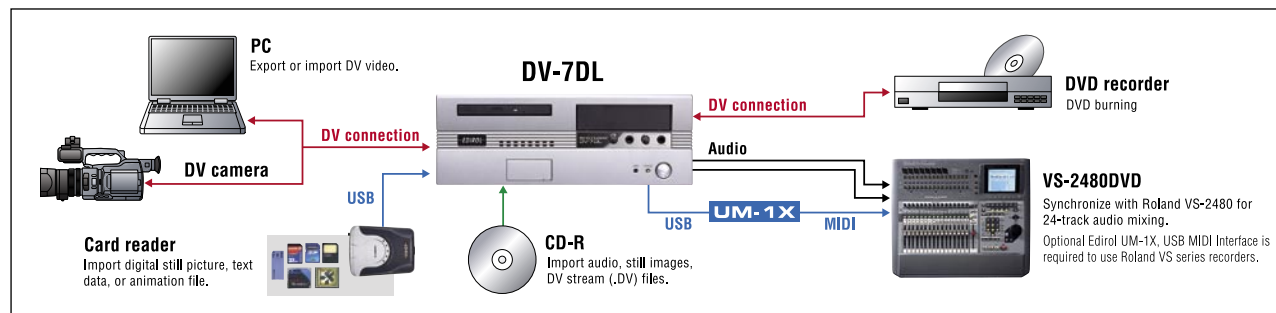
## Professional Voice Over and Audio Scrub functions included.

With the Voice Over function you can make a synchronized narration recording while watching the video. By using the Jog Shuttle Dial of DV-7 controller (DV-7DL PRO only), you can also use the audio scrub feature to find an exact point.



## A variety of connections to external devices supports creativity.

1. DV video can be imported/exported to a PC through IEEE1394.
2. Still pictures or graphic images can be captured via CD-ROM to make background images for titles.
3. With a card reader still pictures that are shot by a digital camera or pictures from PC can be captured.
4. For advanced audio editing, DV-7DL can sync with the Roland VS series of multitrack digital recorders.
5. The DV-7DL can send video not only to a VCR but to a DVD recorder to help create DVD's.
6. The DV-7DL can be interconnected through IEEE1394.



# Direct Linear

## DV-7DL/DV-7DL PRO Main Features

<b>Recording time</b>	Internal hard drive: Approximately 5 hours Optional external hard drive (DV-HD120): Approximately 9 hours	<b>Special effects</b>	Page Turn/Alpha Wipe/Flight/Rotation/Zoom Flip/ Slide/Stretch/Cross Stretch/Cross Zoom/Swap/ Cross Mosaic/Page Peel/ <b>Diffusion/Door/ Nostalgia/Sepia/Mosaic/Blur/Fish-eye/Spot/ Animation/PinP/Chroma Key/Luminance Key/Crop/ Swing/Slow Motion/Fast Motion/Reverse Motion/ Strobe Motion/Mirror/After Image/Zoom and Pan (still picture, with 4:3/16:7 modes).</b>
<b>Capture</b>	DV (audio: 48kHz/32kHz) - Auto Split supported. S-Video/Video (composite) Audio (L,R/Mic/CD) Still Picture (CD/Memory card with memory card reader)		
<b>Edit tracks</b>	Video track x 2 (Main video & Insert video) Title track x 2 Effect track x 1 Audio track x 4 (Stereo) <b>A/B Roll control track x 1 ( A/B Roll edit mode)</b>	<b>Titler</b>	Text Body: Fonts, Size, Color (Mono/Gradation/Texture), Transparency, Edge (Color/Level/Transparency) Edge: Anti-aliasing Processing Others: Draw Objects (10 types), Still picture capture, <b>object alignment, 16:9 mode, Roll/Crawl setting with real time preview.</b>
<b>Edit windows</b>	Time Line edit Story Board edit <b>A/B Roll edit</b>		
<b>Real time effects</b>	Dissolve/Wipe/Master Fade/Color Correction (brightness,contrast, saturation, RGB level)/ Monotone/Posterization/Colorization/Negative/ Double Exposure/Realtime PinP/ <b>Realtime Luminance Key/Realtime Chroma Key/ Split Screen</b> /Audio effects(4 band EQ, ALC/ Compression, Delay, Limiter, Mixer, Reverb, Pro Reverb, RSS 3D effect, stereo spreader)	<b>Others</b>	Alteration of audio playback mode, Video data error correction, Hard disk error check, MTC/MMC support.

The features with **red** are supported by DV-7DL PRO or DV-7DL Upgrade Kit only.

## DV-7DL/DV-7DL PRO Main Specifications

<b>Video signal</b>	NTSC or PAL	<b>Memory device</b>	Internal hard drive 80GB. Removable hard drive bay (only for optional DV-HD series).
<b>Video format</b>	DV/DVCAM Video: IUT601 (Y, Cr, Cb: 4:2:2., 8bit) Audio: sampling rate 48kHz, resolution 16bit		
<b>Video input/ output</b>	DV(i-Link) IN/OUT (4-pin IEEE1394 jack x 2.) S-Video input, mini DIN 4 pin x 1 (Y: 1.0Vp-p, C: 0.286Vp-p, 75ohm) Video (composite) input, RCA pin type x 1 (Y: 1.0Vp-p, 75ohm) S-Video output mini DIN 4 pin x 1 (Y: 1.0Vp-p, C: 0.286Vp-p, 75ohm) Video (composite) output RCA pin type x 1 (Y: 1.0Vp-p)	<b>Interfaces</b>	PS/2 mini DIN 6 pin x 2 (ASCII keyboard and mouse). Remote connection USB1.1 x 4 (DV-7DLC controller, DL-CR1 card reader or optional Edirol MIDI devices).
	<b>Audio input/ output</b>	<b>Power</b>	AC100V – 120V/AC220V-240V (50/60Hz) switchable.
<b>Display output</b>		<b>Power consumption</b>	90W
		<b>Dimensions</b>	360(W) x 420(D) x 130(H)mm
		<b>Weight</b>	8.5kg
		<b>Accessories</b>	Optical mouse (PS/2), Mouse pad, AC cord, DV cable (1.5m), Owner's manual, <b>DV-7DLC controller, DL-CR1 USB card reader.</b>

The specifications with **red** are supported by DV-7DL PRO or DV-7DL Upgrade Kit.



\*The DV-7DL/DV-7DL PRO is installed with software licensed by the following companies: Be Incorporated/Agfa Monotype Corporation.

\*Be, BeOS, and Be OS Logos are trademarks or registered trademarks of Be Incorporated in the United States and other countries.

\*i.Link and i.Link Logo are registered trademarks of Sony Corporation.

## OPTIONS

<p><b>A dedicated editing controller that gives an analog feel to audio and video editing.</b></p>  <p><b>DV-7DLC</b> DV-7DL Controller</p>	<p><b>Upgradable to DV-7DL PRO.</b></p>  <p><b>DV-PRO</b> DV-7DL Upgrade Kit</p>	<p><b>Capable of approximately 9 hours of recording time.</b></p>  <p><b>DV-HD120</b> Removable Hard Disk</p>	<p><b>Powerful 20 W x 2 stereo bi-amp monitor speakers.</b></p>  <p><b>MA-20D</b> Stereo Micro Monitor</p>	<p><b>Compact 10 W x 2 stereo monitor speakers.</b></p>  <p><b>MA-10DBK</b> Stereo Micro Monitor</p>	<p><b>Hi quality microphone for narration.</b></p>  <p><b>DR-20</b> Dynamic Microphone Roland®</p>	<p><b>Hi quality headphones for audio monitoring.</b></p>  <p><b>RH-200</b> Stereo Headphones Roland®</p>
---	--	--	--	--	--	---

**EDIROL**  
www.edirol.com

Edirol Corporation North America  
425 Sequoia Drive Suite, Suite 114 Bellingham, WA 98226  
Phone: (360) 594-4280 Fax: (360) 594-4271  
sales@edirol.com