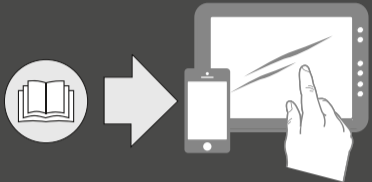




# ew IEM G4

- Quick Guide
- Kurzanleitung
- Guide rapide
- Guida rapida
- Guía de inicio rápido
- Guia rápido
- Beknopte handleiding
- Krótka instrukcja obsługi
- Snabbguide
- Kort vejledning
- Pikaohje
- Γρήγορος οδηγός
- Kısa Kılavuz
- Краткая инструкция
- 快速指南
- 快速使用指南
- クイックガイド
- 퀵 가이드

SENNHEISER



Sennheiser Documentation App



ANDROID APP ON Google play

Available on the App Store

or online at [www.sennheiser.com/download](http://www.sennheiser.com/download)  
ew IEM G4\_

Sennheiser electronic GmbH & Co. KG

Am Labor 1, 30900 Wedemark, Germany  
[www.sennheiser.com](http://www.sennheiser.com)

Publ. 01/18, 575863/A01

## SR IEM



## EK IEM



## Battery

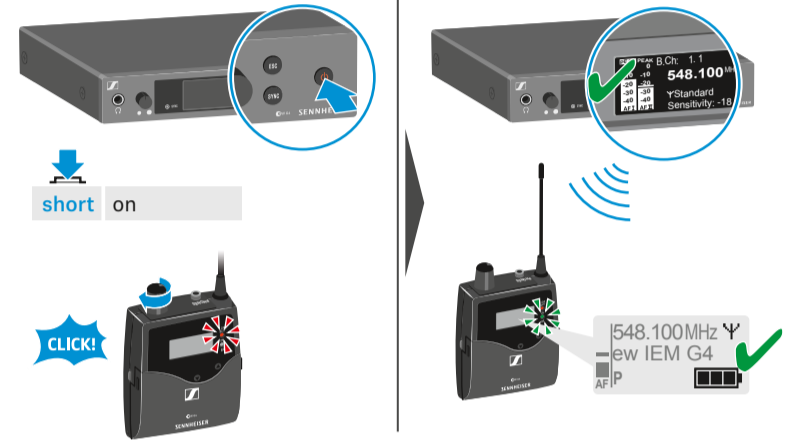


## Low Battery

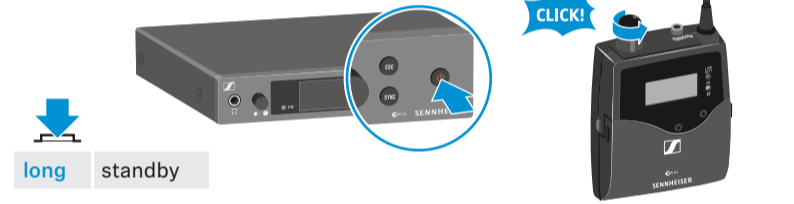
	100 %	> 8 h
	70 %	4 - 6 h
	30 %	2 - 3 h

LOW BATT

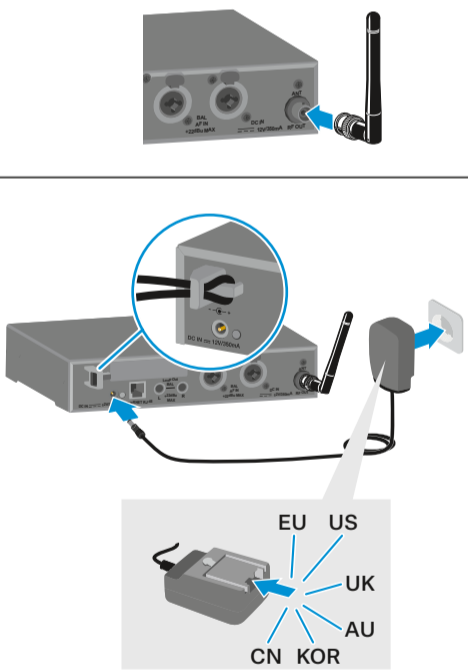
## On



## Off



## Setup



## Standard display

Frequency Bank . Channel: U1.16 ew IEM  
548.100 MHz  
Y Standard  
Sensitivity: -18dB

Labels: Audio level (mono), Sensitivity, Mono, Audio level (stereo), Sensitivity, Stereo, Transmission Power, Input sensitivity, Auto lock, Warnings, RF Mute, Auto lock.

## LEDs

Warnings LED (red)

Sync LED (blue)

Labels: RF level, Frequency, Auto lock, Audio level, Sensitivity, Pilot tone, Mute, Battery, Balance.

## Menu

UP DOWN ESC SET

SET → Main menu "Menu": Sensitivity, Mode, Easy Setup, Frequency Preset, Name, Auto Lock, Advanced, Exit

Extended menu "Advanced Menu": Tune, Sync Settings, RF Power, Fullscreen Warnings, Brightness, Reset, IP-Address, Software Revision, Exit

"Fullscreen Warnings": AF Peak, RF Mute, Exit

DOWN UP SET ESC

SET → Main menu "Menu": Squelch, Easy Setup, Frequency Preset, Name, Balance, Mode, High Boost, Auto Lock, Advanced, Exit

"Easy Setup": Reset List, Current List, Scan New List

Extended menu "Advanced Menu": Tune, Pilot Tone, Limiter, Volume Boost, LCD Contrast, Engineer Mode, Reset, Software Revision, Exit

**Stereo**

6.3 mm

XLR-3

OR

Instruction Manual

AUX

SR

Mode  
Stereo

EK

Menu  
Mode  
Stereo

**Mono**

6.3 mm

XLR-3

OR

Instruction Manual

AUX

SR

Mode  
Mono

EK

Menu  
Mode  
Focus  
Advanced Menu  
Pilot Tone  
Inactive

**Phones**

VOLUME

6.3 mm

VOL

< 70 %

**Auto lock**

SR

1 2 3

Locked Unlock?

SET SET

10 s Auto lock

Instruction Manual

EK

1 2 3

Locked Unlock?

SET SET

**Sync**

SYNC

OR

SYNC

Instruction Manual

$\le 10\text{ cm}$   
 $\le 4''$

**Sensitivity**

-42 dB ... 0 dB

Menu  
Exit  
Sensitivity  
Mode  
-18dB

**Squelch**

Menu  
Squelch  
9 dB

25 dB

5 dB

RF

**Mute**

Instruction Manual

RF Mute On?

RF Mute Off?

SET

**Network Control**

WSM  
Media Control

ETHERNET

**Multichannel - Easy Setup**

Bank 1 ... 20; U1 ... U6  
Channel 1 ... 16

max. 16 channels

1

Menu  
Easy Setup  
Frequency Preset

2

Menu  
Easy Setup

3

Instruction Manual

RJ 45