

livesound >

portablesound >

installedsound >

## Features

- Bi-amped three-way line array system
- Integrated flying hardware
- Fly up to 16 cabinets deep
- Lightweight polyurethane composite enclosure
- Neodymium drive units
- Combined Dendritic/Polyhorn waveguide
- Speakon NL4 connectors
- 110° horizontal dispersion
- Constant phase wavefront

## Applications

- Live concert sound
- Fixed installations
- Theatre
- House of Worship
- Corporate A/V

# FLASHLINE MINI series

MUSIC Group IP Ltd.  
Trident Chambers, Wickhams  
Cay, P.O. Box 146, Road Town,  
Tortola, British Virgin Islands

t: +44 (0)1403 711447  
f: +44 (0)1403 710155  
e: CARE@music-group.com  
w: www.turbosound.com

# TFS-550H compact 3-way bi-amped line array



The small format TFS-550H Flashline Mini line array is a compact three-way bi-amped line array loudspeaker consisting of a proprietary 1" high frequency compression driver on a Dendritic horn, a proprietary 4" high-mid frequency driver on a Polyhorn™ device, and two Turbo-loaded 6.5" low-mid frequency drivers.

In keeping with existing technologies deployed in the larger Flashline and Flex Array systems, the HF Dendritic waveguide features multiple hornlets with identical path lengths designed to give a flat constant phase wavefront with horizontal dispersion of 110°. When coupled to the horn, the waveguide shapes the spherical wave produced by the compression driver into the cylindrical wavefront that is a key component of line source array behaviour.

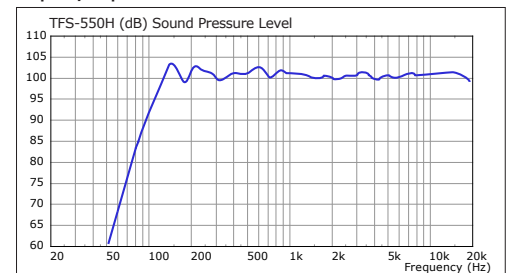
The cabinet is symmetrically loaded to create coplanar symmetry with smooth and consistent horizontal and vertical coverage, creating a co-linear source, the cylindrical domain equivalent of a coaxial arrangement for individual spherical sources. The cabinet is constructed using a polyurethane composite hard foam, making a very lightweight, rigid and non-resonant enclosure. In addition, the precise positioning of the neodymium drive units saves space within the enclosure and enables a very compact package.

Rigging hardware is fully integrated into the end-cheeks at the sides of the cabinet. It consists of drop links which engage into the flyware of the cabinet below, secured by captive pins, which stow away on the cabinet when not in use. The rear flyware provides a range of inter-cabinet splay angles from 0° to 12° in one degree increments. The FB-550 flybar provides multiple pickup points located along a central spine, and allows arrays of both mid/high enclosures and bass cabinets to be flown in a visually unobtrusive array. Two rear-mounted Speakon NL4 connectors provide input and link connections to the

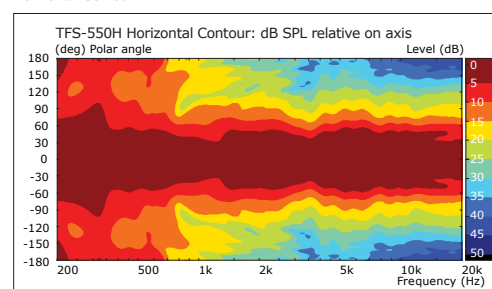
loudspeaker.

Recommended amplification is provided in the form of the highly advanced and extremely powerful 10000DP four channel amplifier with Lake processing and Dante networking built in. Please check the Turbosound website for module files/presets.

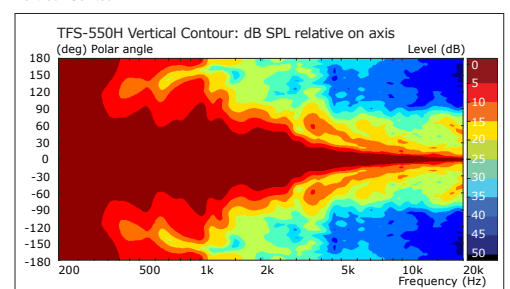
Frequency Response



Horizontal Contour



Vertical Contour



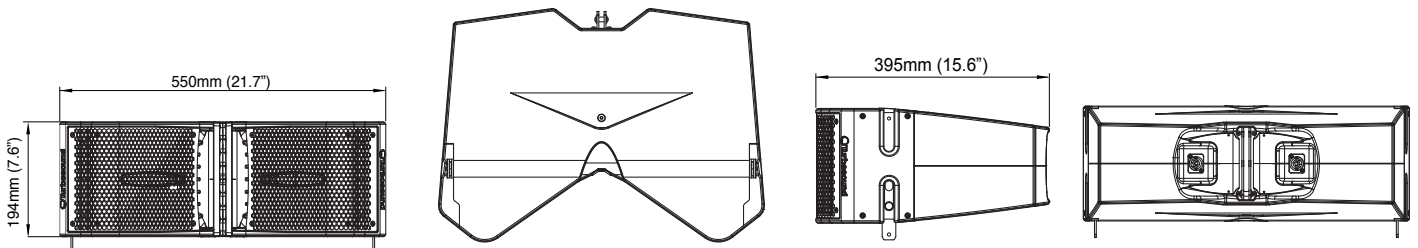
livesound >

portablesound

installedsound >

# TFS-550H compact 3-way bi-amped line array

<b>DIMENSIONS (HxWxD)</b>	194mm x 550mm x 395mm (7.6" x 21.7" x 15.6")
<b>NET WEIGHT</b>	13.4kg (29.5lbs)
<b>COMPONENTS</b>	2 x 6.5" (165mm) LF drivers, 1 x 4" (101mm) MF driver, 1 x 1" (25.4mm) HF compression driver
<b>FREQUENCY RESPONSE</b>	80Hz – 20kHz $\pm$ 3dB
<b>NOMINAL DISPERSION</b>	110°H x 8°V
<b>POWER HANDLING</b>	LF: 100 watts continuous, 400 watts peak MF/HF: 60 watts continuous, 240 watts peak
<b>SENSITIVITY</b>	LF: 101dB, HF: 106dB (single enclosure)
<b>MAXIMUM SPL</b>	124dB continuous, 130dB peak
<b>IMPEDANCE</b>	LF: 8 ohms; MF/HF: 16 ohms
<b>CROSSOVER</b>	Internal passive crossover at 3k5Hz, 24dB/octave
<b>CONSTRUCTION</b>	Polyurethane composite hard foam
<b>GRILLE</b>	Powder-coated stainless steel
<b>FLYING HARDWARE</b>	Integrated
<b>CONNECTORS</b>	(2) NL4 wired pin1+ LF positive, pin1- LF negative; pin2+ HF positive, pin2- HF negative
<b>OPTIONS</b>	Black textured finish
<b>SPARES AND ACCESSORIES</b>	LS-6509 LF driver RC-6509 LF recone kit LS-4001 MF driver CD-124 HF compression driver RD-124 HF diaphragm FB-550 Flybar
<b>MORE INFO</b>	More information can be found on our website: <a href="http://www.turbosound.com">www.turbosound.com</a>



## Limited Warranty

For the applicable warranty terms and conditions and additional information regarding MUSIC Group's Limited Warranty, please see complete details online at [www.music-group.com/warranty](http://www.music-group.com/warranty)