

### Single Rack Mount Kit for M2T and DSQD

#### Installing One M2T into a Single Rack

The M2T transmitter occupies a half rack space. This kit provides the hardware needed to mount one M2T or DSQD into a single rack space.

**NOTE:** Steps 1-6 will require original mounting hardware that came with the units. Part numbers are included in case individual items need to be reordered.

1. Remove the Trim Cap (Part #P1330) from both sides of the front panel of the M2T unit to be rack mounted.



2. Remove the breakaway tabs on both sides of the Chassis Cover Panel. This requires the use of a flat-blade screwdriver inserted into the slots and levering the tabs away on each side of the unit.



3. Insert the Flange Bracket (Part #27076) into the open slot in the left-front side of the Chassis Cover Panel.



4. Insert two (2) Cap Screws (Part #28885) through the Rack Handle (Part #27082) holes and install the Rack Handle onto the Flange Bracket through the holes in the unit's front panel. Firmly tighten the Cap Screws using the long leg of the Hex Wrench as shown.



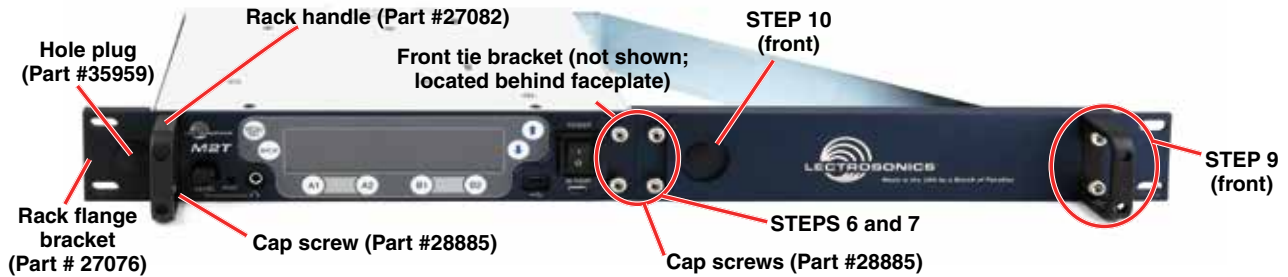
5. Unless also installing a Front Mounted Antenna, insert the Hole Plug (Part #35959) into the open antenna hole in the Flange Bracket by aligning the flat sides of the plug with those of the bracket hole and pushing into place until flush.



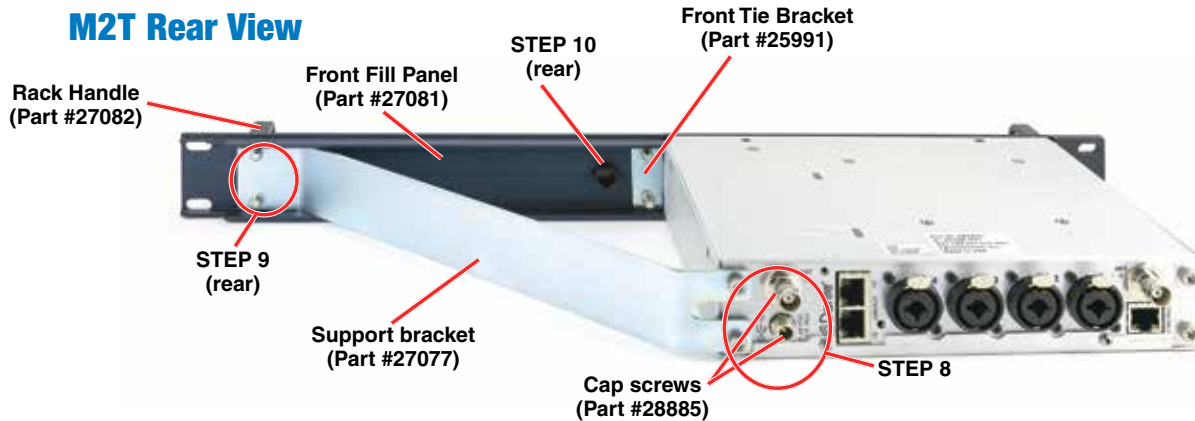
6. Install the Front Tie Bracket (Part #25991) into the open slot in the right side of the M2T Chassis Cover Panel with the protruding nuts facing rearward, affix with two (2) Cap Screws (Part #28885) provided and firmly tighten with the Hex Wrench. See next page.

**NOTE:** Steps 7-11 require parts from the (RMPM2T-1) M2T Single Rack Mount Kit.

## M2T Front View



## M2T Rear View



## Items Included in RMPM2T-1 Kit:

- Technical Data Sheet
- (27077) Support Bracket
- (27081) Front Fill Panel
- (27082) Rack handle
- (28885) (4) SCR10 cap screw
- (35800) Hex L key wrench
- (35959) Hole plug
- (35664) (4) Rubber feet
- (28951) (2) Long mounting screws\*
- (28950) (2) Short spacer tubes\*

**NOTE:** Starred (\*) items are needed only when installing a DSQD, They are not needed for M2T installation and may be set aside.



7. Use two (2) Cap Screws (Part #28885) to attach the left side of the Front Fill Panel (Part #27081) to the two remaining nuts on the Front Tie Bracket (Part #25991) and firmly tighten with the Hex Wrench.
8. Use the Hex Wrench to remove the two (2) inboard Cap Screws from the rear of the M2T. Install the Support Bracket (Part #27077) to the rear panel of the M2T, reusing the two (2) Cap Screws previously removed and firmly tighten with the Hex Wrench. (See rear view image above.)
9. Insert two (2) Cap Screws (Part #28885) through Rack Handle (Part #27082) holes and install the Rack Handle onto the right side Front Fill Panel (Part #27081) through the holes in the panel,

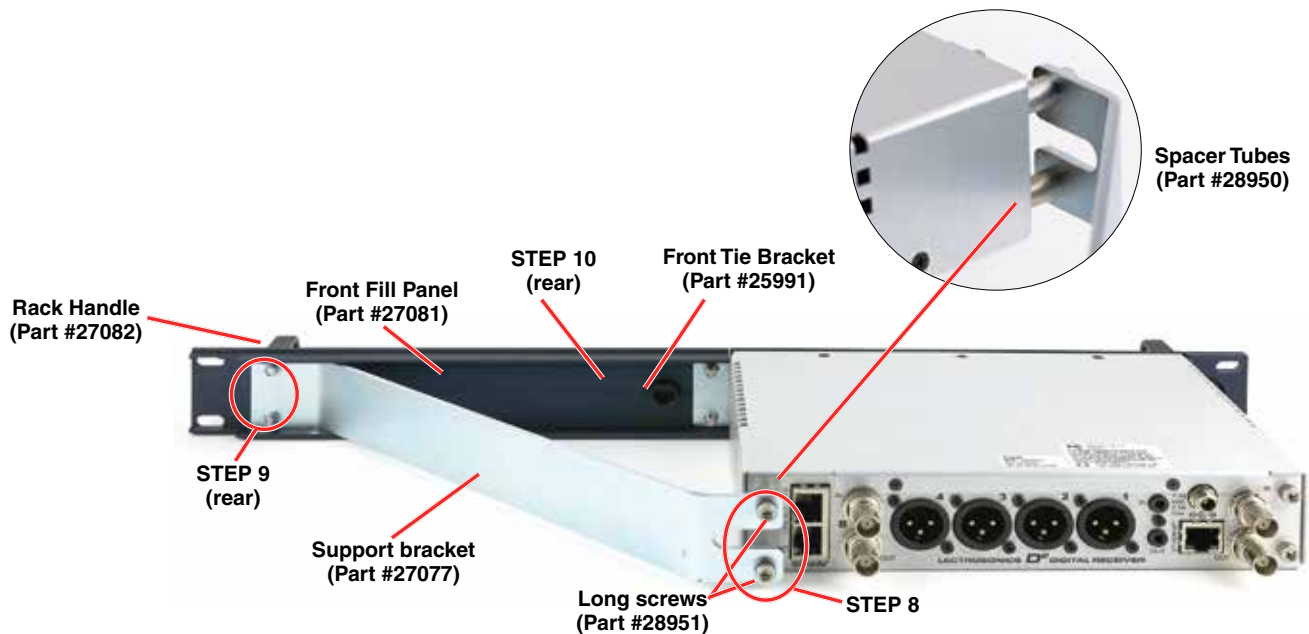
and into the nuts on the Support Bracket (Part #27076). Firmly tighten the Cap Screws using the long leg of the Hex Wrench. (See rear and front view images on front page.)

10. Unless also installing a Front Mounted Antenna, insert the Hole Plug (Part #35959) into the open antenna hole in the Front Fill Panel (Part #27081) by aligning the flat sides of the plug with those of the bracket hole and pushing into place until flush.

The M2T with Front Fill Panel is now ready for installation into a rack.

**NOTE:** If supplied rubber foot/feet are installed on under side of the M2T, it will not fit in a single rack space.

## DSQD Rear View



## Installing One DSQD into a Single Rack

The process to install the DSQD is the same as for the M2T transmitter through Step 7. The DSQD looks similar to the M2T in the frontal view. Follow the steps for the M2T, then resume at Step 8:

8. Use the Hex Wrench to remove the two (2) inboard Cap Screws from the rear of the DSQD. Put them aside and save for later use or spares; you will not need them for this installation. Install the Support Bracket (Part #27077) to the rear panel of the DSQD, using the two (2) long mounting screws, threaded with Spacer Tubes, and firmly tighten with the Hex Wrench. See rear view image and call-out photo above. The kit is designed to handle the M2T and the DSQD with a shorter chassis, so the spacers are included.
9. Insert two (2) Cap Screws (Part #28885) through the Rack Handle (Part #27082) holes and install the Rack Handle onto the right side Front Fill Panel (Part #27081) through the holes in the panel, and into the nuts on the Support Bracket (Part #27076). Firmly tighten the Cap Screws using the long leg of the Hex Wrench.
10. Unless also installing a Front Mounted Antenna, insert the Hole Plug (Part #35959) into the open antenna hole in the Front Fill Panel (Part #27081) by aligning the flat sides of the plug with those of the bracket hole and pushing into place until flush.

The DSQD with Front Fill Panel is now ready for installation into a rack.

**NOTE:** As with the M2T, if the supplied rubber foot/feet are installed on under side of the DSQD, it will not fit in a single rack space.

## Mounting M2T To DSQD

When mounting two M2Ts or two DSQDs together, the units lie flush together as shown. This is not the case with an M2T and a DSQD, as the DSQD housing is shorter and the spacer tubes are needed.



*Two M2T units*



*Two DSQD units*

When attaching an M2T to a DSQD unit, the preferred configuration (when viewing from the back side) is to have the DSQD to the left and the M2T to the right. If the units are mounted the opposite way, the mounting plate will partially block the Dante® ports on the DSQD, making it difficult to remove the cables. Having the DSQD on the left as shown below eliminates this inconvenience.



*Recommended DSQD-M2T mounting*

