

### BA 90 Rechargeable Battery

Voltage	2.5V
Ah capacity	60 mAh

For use with:  
 RI100-A/RI100-J ,HDI92-P, H200 HDI452-P, HDI91-P1/-P2, HDI1029-PLL8/16

### L 90 Charger

Charger for one BA90 battery. Plugs directly into a 110VAC outlet.  
 Charging time is approx. 18 hours

### L 92-10/NT; L 92-20/NT Charger

Charging strip for (10) BA90 batteries with power supply L92-10 and NT92-120

Charging strip for (20) BA90 batteries with power supply L92-20 and NT92-120

Charging time 18hours

Input voltage approx. 12-14V

Dimensions in inches 2 x 7 x 1 (L92-10)  
2 x 14 x 1 (L92-20)

Weight 3.6 oz (L92-10)  
7.2 oz (L92-20)

### HC 101 Carrying Case

Carrying case and charger for (20) BA90 batteries. Case includes foam insert for convenient storage of (20) RI100; H200; HDI91-P1/P2; HDI92P; or HDE1030 receivers. To charge, remove the battery from the receiver and insert in the charging port of the L92-20 charger.

Charger strip for 20 batteries L92-10

Power supply NT92-120

Charging time 14 hours

Input voltage 12-14 VDC

Dimensions 19" x 14 1/2" x 6"

Weight 4.7 lbs.

### L 1030-10 Charger

Charging unit for HDI1029-PLL8 or -PLL16 receivers. Each charger will charge (10) BA90 batteries.

Power supply for up to (2) L1030-10 NT92-12

Power supply for up to (5) L1030-10 NT2013-120

Charging time 14 hours

Input voltage 13VAC

Dimensions in inches 13 x 4 x 1.6

Weight 14 oz.



### L 29-50-2/NT Charger

All metal carrying case and charger for HDI1029-PLL8 or –PLL16 receivers. Includes NT2013-120 power supply. Charges (50) BA90 batteries without removing them from the receivers.

Charging time	14 hours then switches to trickle charge
Input voltage	12VDC
Output current	1.1A
Dimensions in inches	28 x 19 x 7.5
Weight	25.6 lbs. (empty)



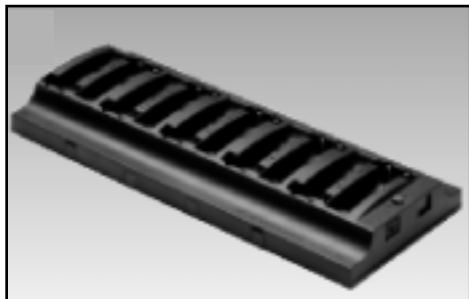
### BA 151 Battery

Voltage	2.4 V
Ah capacity	70 mAh
For use with:	
	RI250/RI250-J/RI250S,HDI302,A200



### L151-120 Charger

Charger for two BA151 batteries.	
Charging time	18 hours approx.



### L151-10/NT Charger

Charger for (10) BA151 batteries	L151-10 and NT92-120
Charger for (11-20) BA151 batteries	(2) L151-10 and (1) NT2013-120
Charger for (21-30) BA151 batteries	(3) L151-10 and (1) NT2013-120
Charger for (31-40) BA151 batteries	(4) L151-10 and (1) NT2013-120
Charger for (41-50) BA151 batteries	(5) L151-10 and (1) NT2013-120
Charging time	10 hours approx.
Power supply	12VDC
Output current	200 mA (with NT92-120) 1.1A (with NT2013-120)

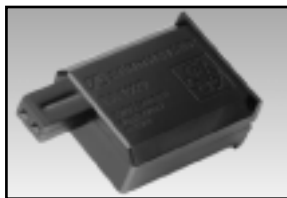




**HC 230 Carrying case**

Carrying case and charger for (20) BA151 batteries. Case includes foam insert for convenient storage of (20) RI250 and HDI302 receivers. To charge, simply stand the receiver in the charging cradle, or remove the battery from the receiver and insert in the charging port of the L151-10 charger.

(2) Charger strips for 10 batteries each	L151-10
Power supply	NT2013-120
Charging time	14 hours
Input voltage	12-14VDC
Dimensions	19" x 14 1/2" x 6"
Weight	7 lbs.



**BA 1029 Battery**

Voltage	2.5V
Ah capacity	170 mAh
For use with EKI1029-PLL receivers (all versions)	



**L 1029-75/NT, L 1029-20/NT Charger**

All metal carrying case and charger for EKI1029-PLL receivers. Includes NT29-120 power supply. Charges (20) and (75) BA1029 batteries respectively without removing them from the receivers

Charging time	14 hours, then switches to trickle charge
Input voltage	12 VAC
Output current	1.5A
Dimensions in inches	28 x 19 x 7.5
Weight	25.5 lbs.



**NT 29**

Plug-in mains unit for the SI 29-5 modulator and the L 1029 charging cases. Connector is twist-locked onto equipment. Available as European, USA and UK versions.

Power consumption	18 VA
Output voltage	12 V AC
Output current	1.5 A