



GENERAL INFORMATION

DIN rail Enclosures from ETC offer a convenient location to house your devices. Designed to work with all Unison Echo, Unison Mosaic, Response and additional third party products.

Wall-mountable version are available in mini (14 in x 8 in), small (14 in x 14 in), and large (14 in x 28 in) formats. The mini enclosure features a single piece of DIN rail, while the small and large enclosures include two aligned rails. All three variants include a re-positionable voltage divider allowing re-configuration to meet the needs of the installation. All wall-mountable versions are ETL listed.

A rack-mountable version is also available for use in standard 19-inch equipment racks.

FEATURES

- Available in four options:
 - Mini (14 in x 8 in) Horizontal
 - Small (14 in x 14 in) Vertical
 - Small (14 in x 14 in) Horizontal
 - Large (14 in x 28 in) Vertical
 - Rack-mount
- Re-positionable voltage barrier

MECHANICAL

- Constructed of 16-gauge cold-rolled steel
- Finished in fine-textured, black powder coat
- DIN rails provided:
 - Mini Enclosure: 13 in (330 mm) long
 - Small Enclosures: 2x13 in (330 mm) long
 - Large Enclosure: 2x27 in (686 mm) long
 - DIN rail kit: 16.5 in (419 mm) long
- Complies with DIN43880 (35/7.5 rail)
- Conduit punch guide holes provided on all sides
- Re-positionable voltage divider allowing low voltage and line voltage in the same enclosure (wall-mount only)
- Configurable opening covers (rack-mount only)

REGULATORY AND COMPLIANCE

- cETLus Listed (wall-mount only)
- Conforms to ANSI/UL Standard 50/50E
- Certified to CAN/CSA Standard C22.2 No. 94.1/94.2

ORDERING INFORMATION

DIN rail Installation Enclosures

MODEL	DESCRIPTION
DIN8	Mini DIN rail Enclosure - Horizontal
DIN14	Small DIN rail Enclosure - Vertical
DIN14-H	Small DIN rail Enclosure - Horizontal
DIN28	Large DIN rail Enclosure - Vertical
DIN-RM	DIN rail Rack Mount kit

PHYSICAL

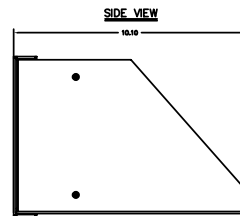
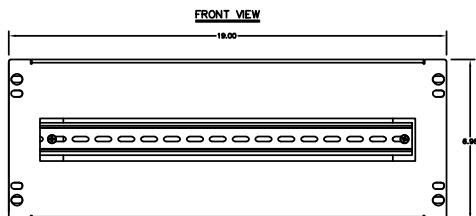
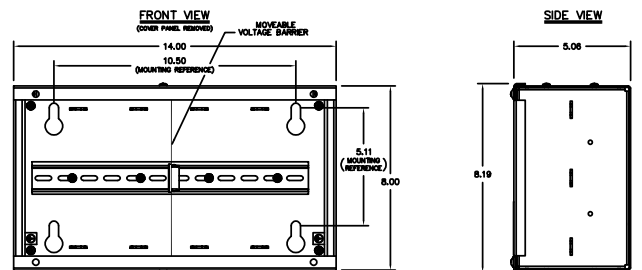
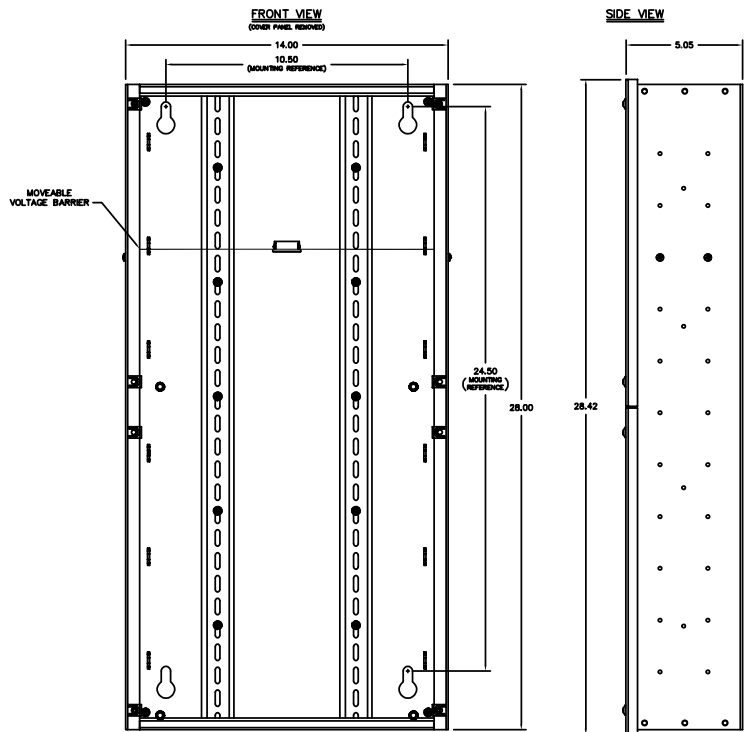
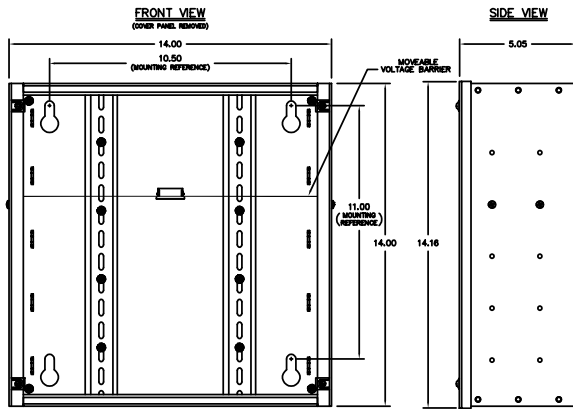
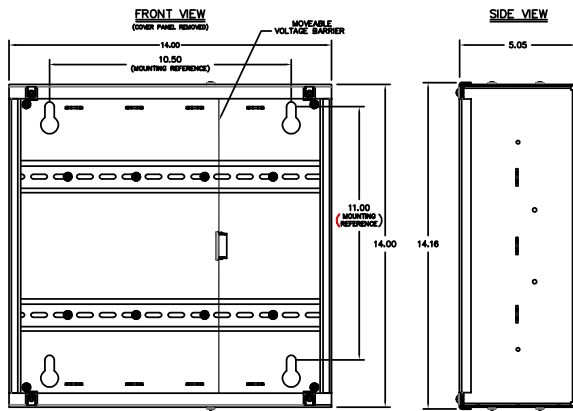
DIN rail Enclosure Dimensions*

MODEL	HEIGHT		WIDTH		DEPTH	
	in	mm	in	mm	in	mm
DIN8	8	203.2	14	355.6	5.05	128
DIN14 (-H)	14	356	14	355.6	5.05	128
DIN28	28	711	14	355.6	5.05	128
DIN-RM	7	177	19	483	10.1	259

DIN rail Enclosure Weights*

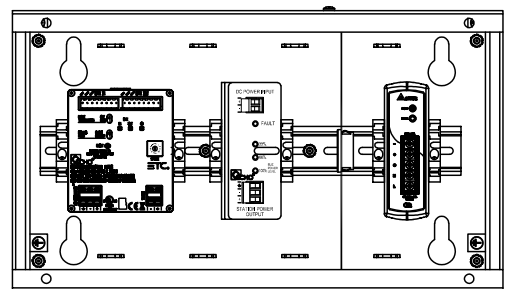
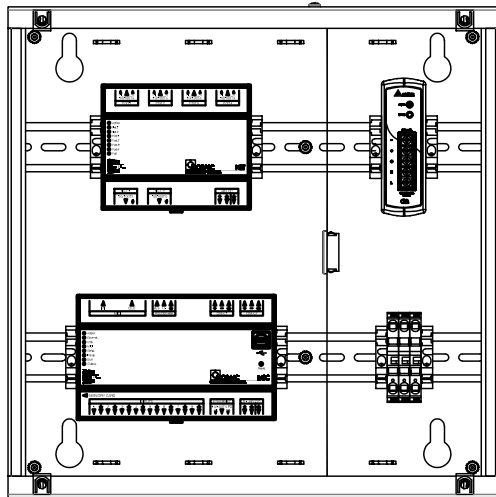
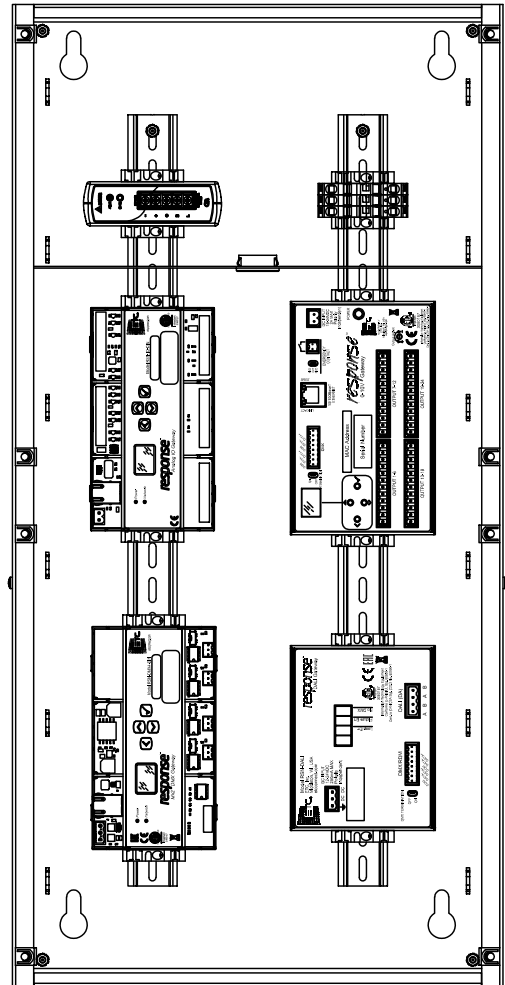
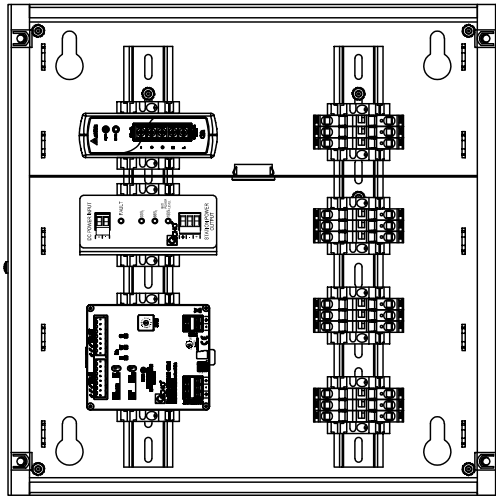
MODEL	WEIGHT		SHIPPING WEIGHT	
	lb	kg	lb	kg
DIN8	8.85	4	10	4.5
DIN14 (-H)	13.4	6	15	6.8
DIN28	23.1	10.5	27	12.2
DIN-RM	5	2.3	6.8	3.1

*Weights and dimensions typical



EXAMPLE ENCLOSURES

(Products not Included)



Corporate Headquarters • Middleton, WI USA

Global Offices • London, UK • Rome, IT • Holzkirchen, DE • Paris, FR • Hong Kong • Singapore • New York, NY • Orlando, FL • Burbank, CA

Copyright©2019 ETC. All Rights Reserved. All product information and specifications subject to change. Rev D 12/19

Trademark and patent info: etconnect.com/1P

etconnect.com