



Quam

SSB-6

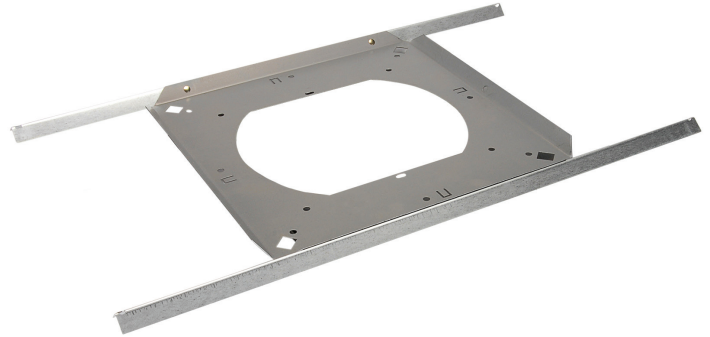
Loudspeaker Support Bridge
for Quam BR8-2WS, 2-pc Baffle ONLY

GENERAL DESCRIPTION

The **SSB-6** is a rust resistant steel, load bearing support for loudspeaker assemblies in a drop-tile ceiling grid. Easy mark & cut "square" hole design for fast and efficient installation. Multiple seismic tie-off points are provided. Quick mount tabs hold the back box in place without screws.

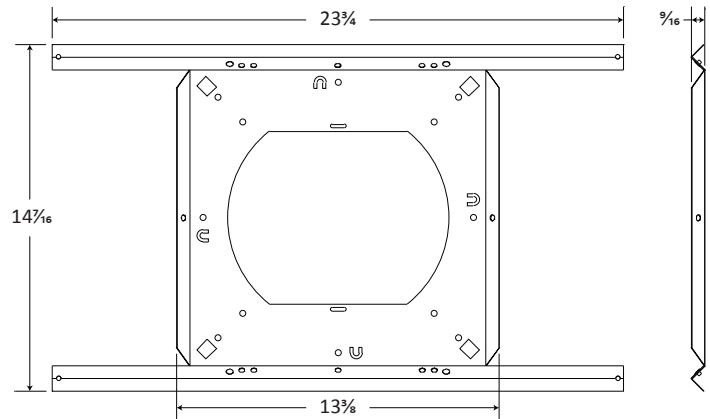
INTENDED USE - Indoor or Protected Outdoor Environment

Installation | Parallel to floor plane in a suspended ceiling structure; maximum span of 24" in one dimension.



RECOMMENDED QUAM COMPONENTS

Baffles | BR8-2WS
Back Boxes | ERD-8 or ER8DU



Recommended construction sequences, installation instructions, and A&E Specifications are available in various formats in the Specs and Diagrams section at: www.QuamSpeakers.com

©2017 Quam-Nichols Company reserves the right to make changes and/or improvements to its products at any time and without notice.



QUAM-NICHOLS COMPANY, INC.
234 East Marquette Road, Chicago, IL. 60637
t: 1-800-NEED-NOW (800-633-3669)
f: 1-888-NEED-NOW (888-633-3669)
e: NeedNow@QNC.com
www.QuamSpeakers.com