



SPECIFICATIONS UB2199-WP

FEATURES

- Weather-resistant construction for continued outdoor exposure
- 1-in exit / 2-in diaphragm HF on 90° conical waveguide for wide-angle coverage
- Black mica filled polypropylene enclosure for heat resistance and uniform color depth
- Foam-backed, stainless steel grille protects drivers from damage
- M10 and M6 threaded inserts for U-brackets and rear mounting
- Driver baffle is mounted with metal inserts for long-term serviceability
- Neutrik and barrier strip input connectors with weather cover door protection

DESCRIPTION

The UB2199-WP is designed to be weather-resistant for continued outdoor exposure. The enclosure is black mica filled polypropylene that resists the elements. This material also provides a highly uniform color depth and resists adverse effects from high temperatures due to solar radiant heating. Its foam-backed, stainless steel grille protects drivers from physical damage as well as driving rain. For further protection, the LF driver cone is also weather treated.

The drivers are mounted to the front baffle, which is assembled to the enclosure using captive, threaded, metal inserts. This superior construction technique ensures enclosure integrity for long-term serviceability. The enclosure is shaped to provide several "grab" points to facilitate carrying. The input connectors on the rear have a weather cover for weather protection. All exposed metal parts are treated with a weather resistant powder coating process.

Although a departure from traditional EAW wood enclosure designs, the UB2199-WP is not just another "plastic speaker". It is designed to the same exacting standards that goes into all EAW products to ensure professional level performance. The UB2199-WP carries a 5 year warranty.

PERFORMANCE

Frequency Response (1 Watt @ 1m)

±3 db 70 Hz to 17 kHz
-10 dB 45 Hz

Axial Sensitivity (dB SPL, 1 Watt @ 1m)

Full Range 97

Impedance (Ohms)

Full Range 8

Power Handling (Watts, Continuous)

400

Recommended High-Pass Frequency

24 dB/Octave 65 Hz



Calculated Maximum Output (dB SPL, @ 1m)

Full Range Peak 129.0
Full Range Long Term 123.0

Nominal Coverage Angle /-6 dB points

Conical 90°

PHYSICAL

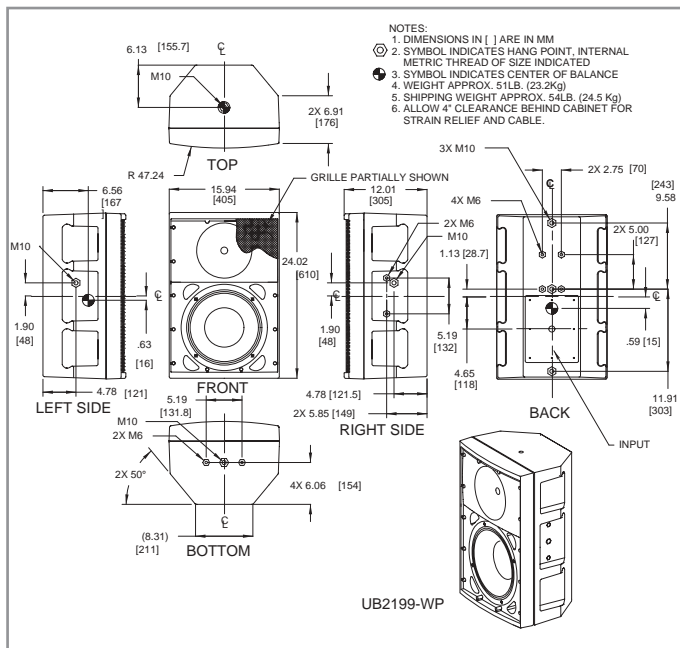
Configuration	2-way, full range	
Powering	Passive LF/HF crossover	
LF Subsystem	12-in, vented	
HF Subsystem	1x 1-in exit compression driver on conical waveguide	
Enclosure Materials	40% Mica filled polypropylene	
Connectors	2x NL4 Speakon & 2 pin barrier strip	
Suspension Hardware	7x M10 & 8x M6 mounting points	
Grille	Powder coated stainless steel	
Dimensions	inches	millimeters
	Height (front)	24.0 610
	Width (front)	15.9 404
	Width (rear)	8.3 211
	Depth	12.00 305
	Trapezoid Angle	40° per side
Weights	pounds	kilograms
	Net Weight	51 23.2
	Shipping Weight	54 24.5





SPECIFICATIONS UB2199-WP

DIMENSIONAL DRAWING



Manufacturing tolerances are +/- 0.13 and +/- 1°

A & E SPECIFICATIONS

The 2-way full range loudspeaker system shall incorporate a 12-in LF transducer and a 1-in exit compression driver HF transducer.

The LF driver shall be mounted in a vented enclosure tuned for optimum low frequency response. The HF driver shall be loaded with a Wave Guide Plate with a nominal coverage pattern of 90° (h) x 90° (v). An internal passive filter network shall provide fourth order acoustical crossover and system equalization.

System frequency response shall vary no more than ± 3 dB from 70 Hz to 17 kHz measured on axis. The loudspeaker shall produce a Sound Pressure Level (SPL) of 97 dB SPL on axis at 1 meter with a power input of 1 Watt, and shall be capable of producing a peak output of 129 SPL on axis at 1 meter. The loudspeaker shall handle 400 Watts of continuous power and shall have a nominal impedance of 8 Ohms.

The loudspeaker enclosure shall be trapezoidal in shape. It shall be constructed of non-resonant polypropylene. Drivers and grille shall be treated to be resistant to weather. Input connectors shall be 2-terminal barrier strip and dual Neutrik NL4 Speakon. M10 and M6 threaded mounting/suspension points shall be provided. The front of the loudspeaker shall be covered with a powder coated perforated steel grille with open cell foam water barrier.

The 2-way full range loudspeaker shall be the EAW model UB2199-WP

