

SONY

Transform presentations with the Edge AI Video Analytics Solution.



REA-C1000 Edge
Analytics Appliance



Get ready to grab your audience's attention with the first AI-based video analytics system that lets you create a powerful real-time video presentation without significant added expense, time, or manpower.

The Edge Video Analytics solution, model REA-C1000, transforms video presentations using artificial intelligence. The compact and lightweight system uses advanced AI-based video analytics technology to analyze input received from connected cameras, including Sony's line of PTZ cameras, and automatically extract the object in focus to combine it with other images in real time. This unique technology using motion and face detection and color and shape recognition effectively makes Edge Analytics the powerful brain of any connected camera and AV set-up.



Transform your Audience Engagement

With Edge Analytics you can engage your audience like never before:

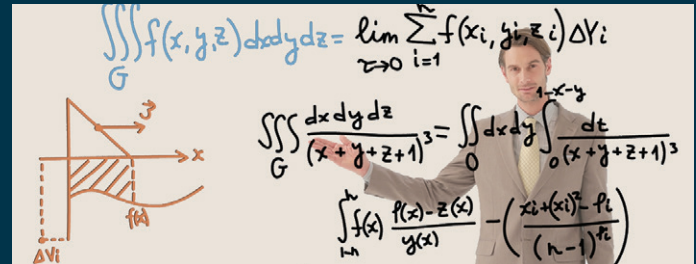
- Use tracking to stay in focus and within the frame.
- Extract characters and diagrams in real time from white or black boards.
- Create animated imagery, still pictures, and supporting graphics – without a dedicated studio.
- Show two different images at once for added impact.
- Zoom in on an audience member to show reactions or highlight questions.



Transform Your Presentations With Powerful Features

Handwriting Extraction and Presenter Overlay (REA-L0100).

Handwriting extraction uses AR (Augmented Reality) technology to ensure that words and diagrams written on a white or black board are extracted and displayed in real time in front of the presenter like a floating board. It helps record the presenter's ideas, thinking process, and passion on video and transmit them to an audience.



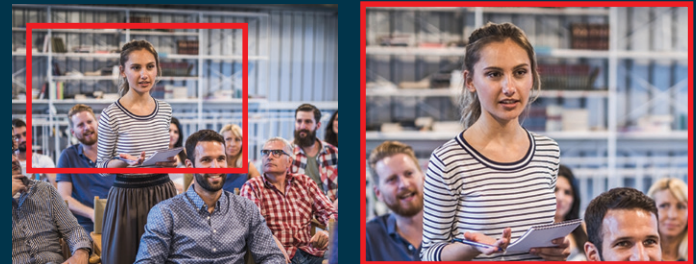
PTZ Auto Tracking (REA-L0200).

Edge Analytics, combined with Auto Tracking software, enables the Sony PTZ cameras to accurately and smoothly track your figure to ensure you stay in focus and within the frame throughout your presentation. This is another cost-effective solution that eliminates the cost of a camera operator.



Close Up by Gesture (REA-L0300).

This intelligent zoom feature allows the video to recognize when someone in the audience stands up from a seated position, and automatically zooms in on the corresponding location. You can display both a wide-angle view and an electronically zoomed view in real time.



Chroma-key-less CG Overlay* (REA-L0400).

Sony's motion detector technology can extract and overlay your figure on any background image, animation, or video in real time without a dedicated green screen. So you can create specific overlay content such as animated imagery, still pictures, and supporting graphics, which provide an interesting backdrop to your presentation. This is a hassle-free and easy-to-operate solution, without the cost of a dedicated green screen, lighting or skilled staff.



Focus Area Cropping* (REA-L0500).

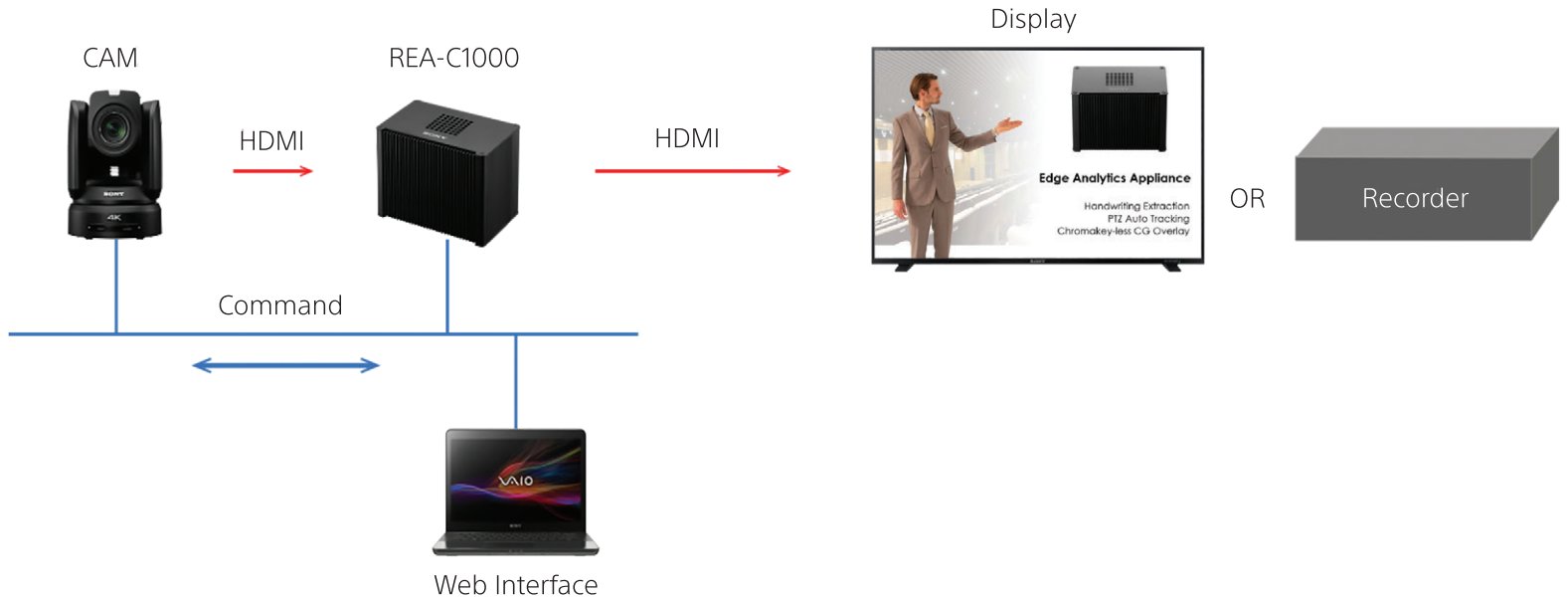
Focus Area Cropping allows an image frame captured by a single camera to be viewed as two different output images simultaneously. For example, you can stream a close-up Full HD image as a cutout from the main wide-angle 4K image. In addition, the cropped area can be selected as static or dynamic to follow your movements using built-in features like motion and face detection and color pattern and shape recognition.



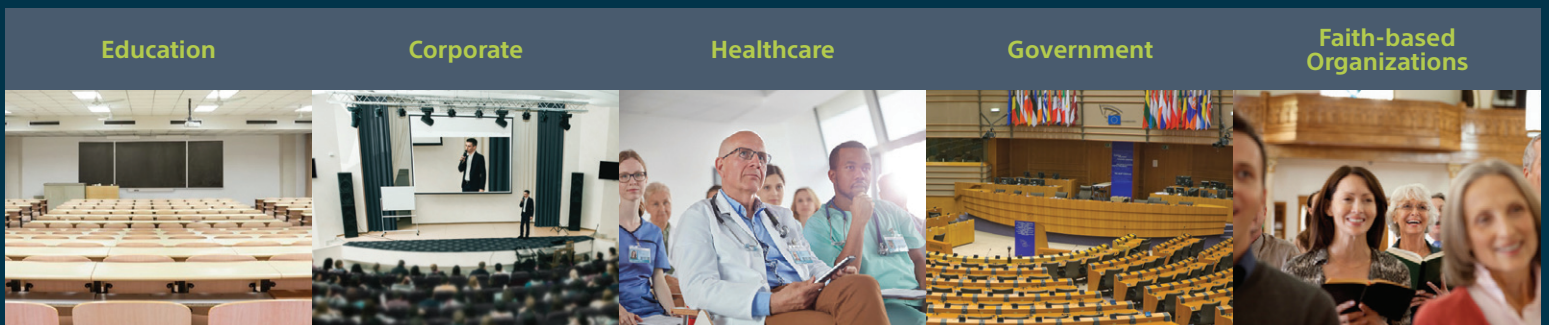
*Chroma-key-less GC Overlay and Focus Area Cropping software to be available late 2019.

System Workflow

The Edge Analytics solution is compatible with Sony network cameras to allow for the transmission of the video images straight to the display or recording device. This enables the handwriting extraction technology, for example, to be used easily without any distraction to the presenter or audience.



As the powerful brain of any connected camera and AV set-up, Edge works like a virtual camera operator at your fingertips and allows you to cost-effectively create professional, engaging content for teaching, training, seminars, events, and conferences in a broad range of applications:



PTZ Cameras

Sony's latest IP PTZ cameras integrate beautifully with the Edge system, enabling a simple, cost-effective lecture capture solution.

The PTZ remote camera line-up combines superb image quality in HD or 4K, with a wide viewing angle with smooth, silent movement. Multiple interfaces, flexible control options and Power-over-Ethernet make them easy to integrate into any size venue.



Transform the impact of your presentations with the Edge Video Analytics Solution.

See our first AI-based video analytics system in action at your location and learn firsthand how it can transform your presentations.

Contact your Sony Representative or visit pro.sony/edge to schedule a demo at your location.



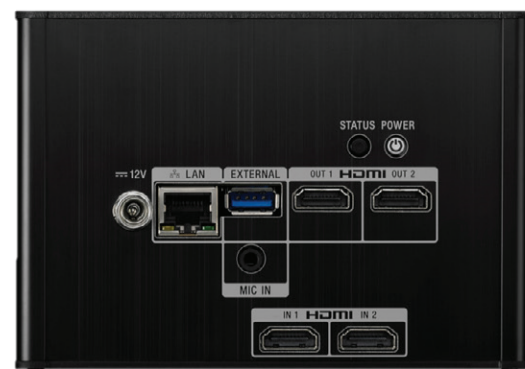
Specifications

REA-C1000

Handwriting Extraction	Required License. (60-day trial license is built-in as default)
PTZ Auto Tracking	Required License. (60-day trial license is built-in as default)
Close-up by Gesture	Required License. (60-day trial license is built-in as default)
Chromakey-less CG Overlay	Required License. (Available from firmware Version 2*)
Focus Area Cropping	Required License. (Available from firmware Version 2*)
Fixed Area Cropping	Crop the static area of the whole view at once.
Intuitive Web-based User Interface	Supports Google Chrome Ver. 70 or later
HDMI IN 1	Up to 4K 30p (3840x2160 / 29.97P, 25P)
HDMI IN 2	Up to FHD 60p (1920x1080 / 59.94P, 50P)
HDMI OUT 1	[EDID]: Automatically determine and output a video image that is compatible with the connected output device. Up to 4K 30p (3840x2160 / 29.97P, 25P)
HDMI OUT 2	[EDID]: Up to FHD 60p (1920x1080 / 59.94P, 50P)
Network (LAN)	RJ-45 (1000BASE-T)
DC power input	12V5A (required 3 rd party AC Adapter)
MIC IN	Stereo, ø3.5 mm mini jack (Available from firmware version 2*)
HDMI Embedded Audio	(Available from firmware version 2*)
RTSP streaming	H.264 (Available from firmware version 2*)
IPv4, IPv6	Internet Protocol version
Role-based Authorization	Access permissions of one administrator and nine general users
Access Restrict	Configure the security function to restrict the computers that can access the unit
Dimension / Mass	Height: 3.8in , Width: 5.6in , Depth: 3.6in / Approx. 1.9lb (Height: 97mm , Width: 141mm , Depth: 91mm / Approx. 0.85kg)
Operating temperature	41°F to 104°F (5°C to 40°C)

*Version 2 firmware release planned to be available late 2019

REA-C1000



Separate Power Adaptor Required
Model# REA-ADAPTOR