

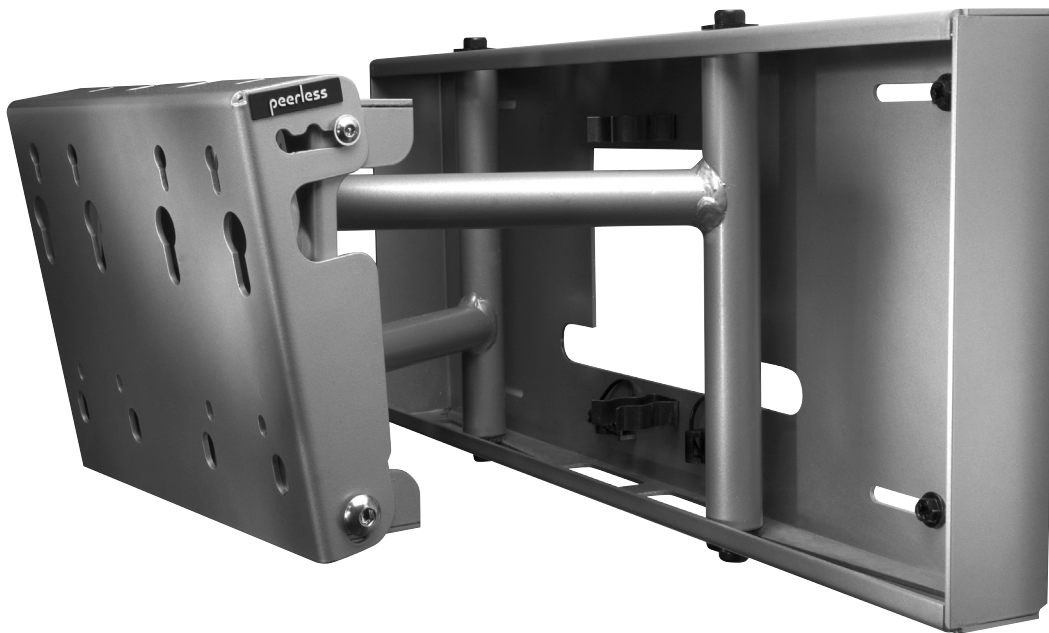
## SmartMount™

### Pull-Out Swivel Wall Mount

For 26" to 50" LCD & Plasma Flat Panel Screens

**New Tilt and Roll Design!**

Patent Pending



The SmartMount™ Pull-Out Swivel Wall Mount combines the best features of a wall mount and a pivot arm. In the closed position, the SP850 acts as a flat or tilting wall mount. At only 2.25" away from the wall, its unique wall plate and built-in cable management neatly hide all components and cords. Extended, the SP850's sturdy arm construction smoothly glides the screen out 10.75" from the wall and allows the screen to pivot up to 45 degrees. This feature not only enables the screen to be positioned for an optimal viewing angle, but it also provides easy access to the back of the screen for maintenance. The SP850 is also ideal in applications where the screen needs to be recessed into a cubby hole, custom frame or aligned into a video wall.

- 2.25" deep in collapsed position
- 10.75" extension
- 0°, 5°, 10° lockable tilt
- +/-1° roll
- Up to 45° swivel

**SP850**



## SmartMount™

### Pull-Out Swivel Wall Mount

For 26" to 50" LCD & plasma flat panel screens

#### Model Numbers

SP850, SP850-S (security models)  
SP850P, SP850P-S (non-security models)

#### Product Specifications

- VESA 100 and 200 x 100 compatible (PLP or LC model adapter plate required for non-VESA screens)
- Pull-out swivel with up to 45° rotation depending on screen size
- Locking tab provides optional swivel restriction to one side
- 2.25" deep in closed position, up to 10.75" fully extended
- 0°, 5° or 10° lockable incremental tilt
- +/-1° roll for horizontal screen alignment during installation
- Built-in cord management
- Lock Key™ installation tool secures arms for screen installation
- Lock-out screw prevents unwanted extension
- Mounts to 16" wood studs, concrete, cinder block
- Includes mounting and screen attachment hardware



#### FEATURES

#### LOAD CAPACITY

UL listed to 150 lb (68 kg)

#### DIMENSIONS (W x H x D)

21" x 9" x 2.25" (53.3 x 22.9 x 5.7 cm)

#### PRODUCT WEIGHT

20.1 lb (9.1 kg)

#### FINISH

Scratch resistant fused epoxy

#### AVAILABLE COLORS

Black: SP850, SP850P  
Silver: SP850-S, SP850P-S

#### ACCESSORIES

##### Model number

LC-V400  
PLP and LC models  
MSA-101  
ACC924/926  
ACC309  
PM600(W)  
PM610(S)(W)  
PM610G(SG)(WG)

##### Description

VESA 200 x 200 adapter plate  
Dedicated and universal adapter plates  
Multi-channel speaker mount  
4' / 6' cable management channel  
Video conferencing shelf  
Accessory shelf  
Electronics tower  
Electronics tower with glass shelves

#### PATENTS

Pending

#### PACKAGE CONTENTS

#### Package Specifications

Mount, Lock Key™ installation tool, locking swivel tab, mounting and VESA 100 and 200x100 screen attachment hardware

#### UNITS IN PACKAGE

1

#### PACKAGE SIZE (L x W x H)

22.125" x 13.75" x 2.75" (56.2 x 34.9 x 7 cm)

#### PACKAGE SHIP WEIGHT

22.4 lb (10.2 kg)

#### PACKAGE UPC CODE

SP850: 735029240297  
SP850P: 735029240372  
SP850-S: 735029240709  
SP850P-S: 735029240716

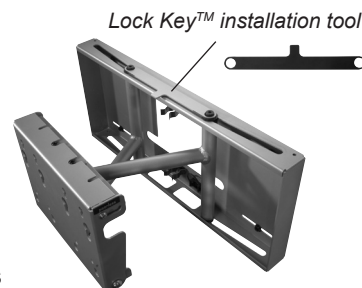
#### WARRANTY

Limited 5-year

(800) 865-2112  
www.peerlessmounts.com

Peerless Industries, Inc.  
3215 W. North Avenue, Melrose Park, IL 60160  
(708) 865-8870 or (800) 865-2112 Fax: (708) 865-2941 [www.peerlessmounts.com](http://www.peerlessmounts.com)

© 2006 Peerless Industries, Inc. All rights reserved.  
SmartMount is a trademark and Peerless is a registered trademark of Peerless Industries, Inc.  
All other brands, product names and taglines are trademarks or registered trademarks of their respective owners.



LIT-0134 rev.1