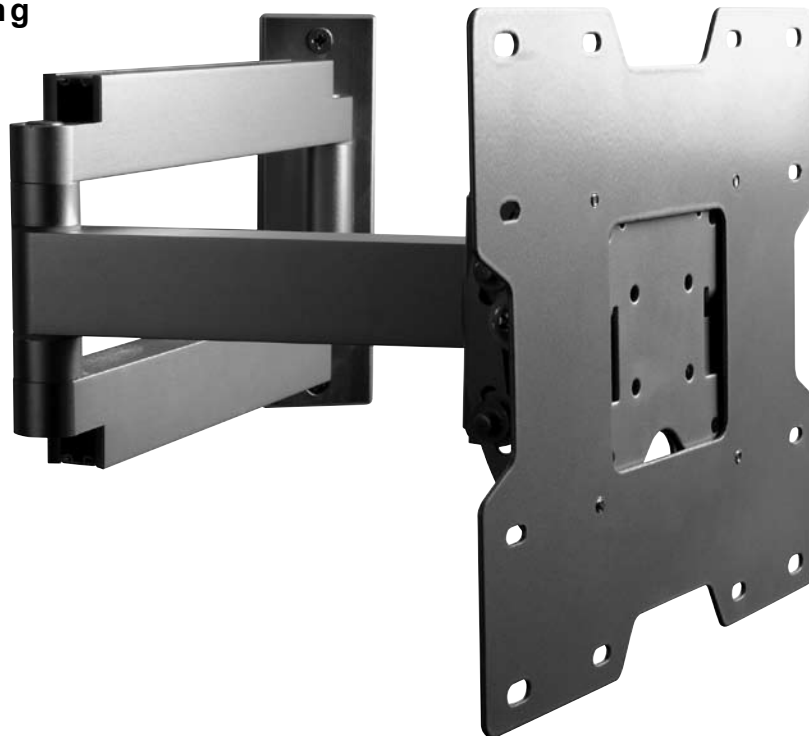


SmartMount™

Articulating Wall Arm for LCD Screens For 22" to 37" LCD Screens

NEW DESIGN

Patent Pending



The SmartMount Adjustable Wall Arm makes it easy to view the display from any angle. This two-link arm extends up to 20" from the wall and provides easy one-touch tilt and 180 degrees of swivel for limitless viewing positions. Its anodized aluminum finish complements offices, conference rooms or any room in the home while its internal cord management system neatly hides all cables and cords for a clean, clutter-free installation. For easy installation, this mount comes completely pre-assembled with all necessary mounting and screen attachment hardware

- Fits 22" to 37" LCD screens
- Tilts and articulates in virtually all directions
- Keeps electronic wires routed internally to reduce clutter
- Frees up space by folding flat against the wall

SA740P, SA740P-S



SmartMount™

Articulating Wall Arm for LCD Screens For 22" to 37" LCD Screens

Model Numbers

SA740P, SA740P-S

Product Specifications

- Fits 22" to 37" LCD screens
- Pre-assembled for fast and easy installation
- Comes with VESA® 100 / 200x100 / 200x200 mm screen adapter plate
- Non-VESA adapter plates available (sold separately)
- Three pivot points for virtually limitless adjustment that can be tightened to restrict movement
- 20° of smooth, continuous, one-touch tilt (5° up, 15° down)
- Offers up to 180° of swivel (depending on screen model)
- Adjustable roll of 7° in either direction allows screen to be easily leveled
- Anodized aluminum finish available in black or silver
- Built-in internal cord management conceals wires for a clean look
- Includes hardware for installation to a single wood stud or concrete



FEATURES

DIMENSIONS (D)

Closed: 3.44" (8.74 cm)
Extended: 20.2" (51.3 cm)

LOAD CAPACITY

80 lb (36.28 kg)

PRODUCT WEIGHT

7.9 lb (3.58 kg)

FINISH

Anodized Aluminum

AVAILABLE COLORS

Black, SA740P
Silver, SA740P-S

ACCESSORIES

Metal Stud Wall Plate (WSP models)
Security Screen Fasteners (ACC919)

PATENTED

Patent Pending



Built-in internal cord
management channels

Package Specifications

Adjustable Arm, VESA Screen Adapter Plate, Mounting Hardware

1

10.1" x 12.5" x 4.25" (25.1 x 13.75 x 10.79 cm)

8.41 lb (3.41 kg)

SA740P 735029237327
SA740P-S 735029237334

Limited 5-year



Peerless Industries, Inc.
3215 W. North Avenue,
Melrose Park, IL 60160

(800) 865-2112
(708) 865-8870

Fax: (708) 865-2941

www.peerlessmounts.com

Visit peerlessmounts.com to see the full line of Peerless LCD/plasma, projector and TV/monitor mounts.

© 2006 Peerless Industries, Inc. All rights reserved.

SmartMount is a trademark and Peerless is a registered trademark of Peerless Industries, Inc.

All other brands, product names and taglines are trademarks or registered trademarks of their respective owners.

LIT-0115 rev.1