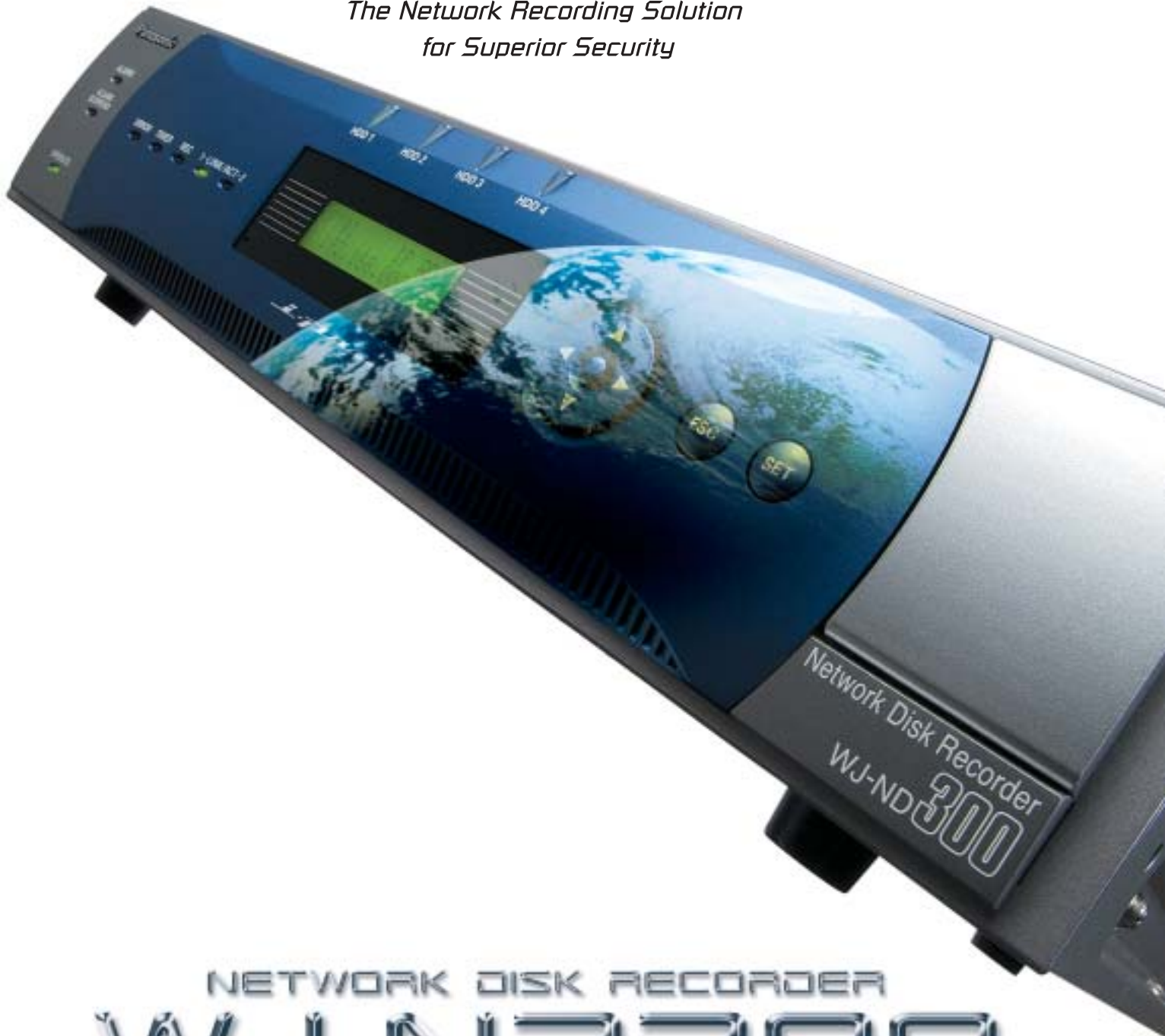


**Panasonic**  
ideas for life

Network Disk Recorder  
WJ-ND300

*The Network Recording Solution  
for Superior Security*



NETWORK DISK RECORDER  
**WJ-ND300**



# Professional Surveillance

## High Image Quality

Purpose of Measurement		Number of Cameras	Live Monitoring	Recording	Number of Clients
Image Resolution	Image Setting				
JPEG VGA (640 x 480)	at Normal	16	10 ips	5 ips	Two (2) browser at 2 QUADs
MPEG-4 VGA (640 x 480)	at Normal (2,048 kbps)	12	30 ips (WV-NP244)	30 ips (WV-NP244)	One (1) WV-AS65 at 16 screen

## High Capacity Storage

The WJ-ND300 comes standard with 250GB of storage capacity. And can be configured with 3 additional hard disk drives for 1TB of storage. Additionally, with optional WJ-HDE300 Extension Units, a system can have up to 7TB of storage.

### More Efficient Use of Image Storage Capacity

The Rate Control feature for MPEG-4 permits storage of only Intra Frame data. Data Stream Control for JPEG reduces only recording frame rate.

## A Wealth of Advanced Surveillance Features

To increase surveillance efficiency the WJ-ND300 recorder provides a full array of Schedule, Event, Emergency, and External Timer recording features, multiple parameter filters that provide accelerated search, and supports E-mail notification via FTP.

## High-level User Management

The WJ-ND300 allows for registration of up to 32 users with individual user ID and password. Operations and access to cameras and functions can be restricted for each user. For additional security, the host authorization function blocks access and operation from unregistered IP addresses.

## Benefits of Combining Highly Reliable Surveillance and IP Network

### Flexibility

Use of an IP Network allows camera placement anywhere along the network. It also permits live monitoring, search, playback and recording from a computer.

### Scalability

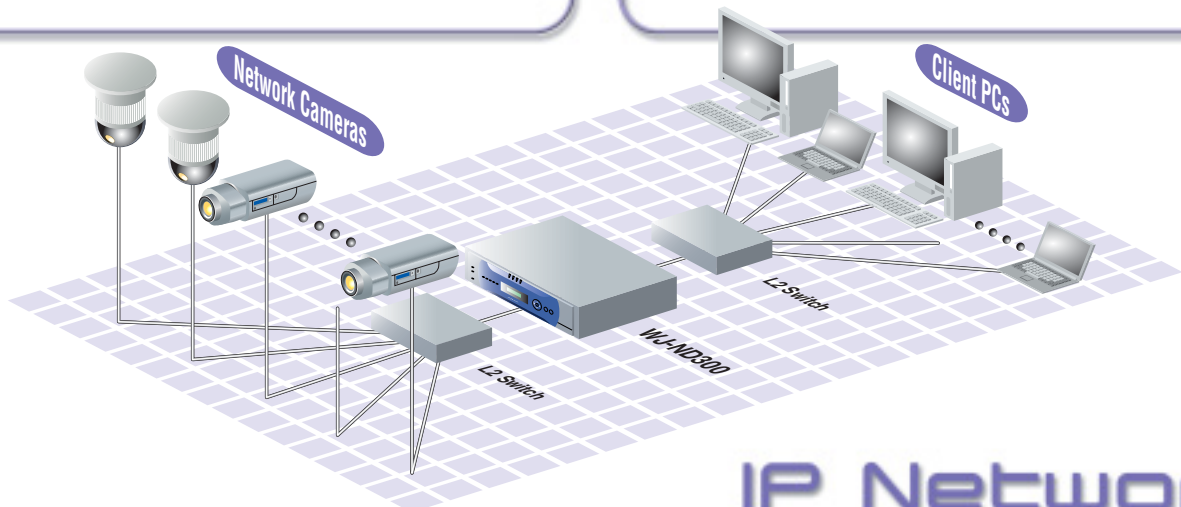
Use of an IP Network also reduces the number of steps required to add cameras and connect them to a hub. With our optional WV-AS65 Management PC Software, systems can incorporate up to 100 WJ-ND300 Network Disk Recorders and up to 3,200 cameras.

### Cost Efficiency

Because the WJ-ND300 utilizes an existing network infrastructure, it sharply reduces costs in both time and money compared to systems that require dedicated cabling. The use of ordinary PCs eliminates the need for dedicated monitors. Plus, with hard disk storage, the burden of replacing video tapes or other consumables is also reduced.

### Built with the Future in Mind

As digital networks become a pervasive component of contemporary life, the potential for networked video surveillance systems is enormous. The WJ-ND300 is designed to take full advantage of new networking advances and to simplify the integration of other surveillance applications (i.e. access control systems).



# IP Network

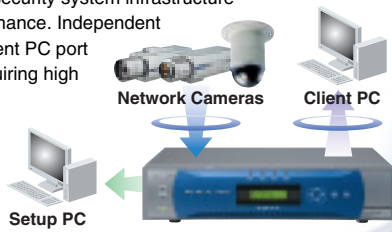


# The Disk Recorder for MPEG-4/JPEG Network Cameras

Panasonic introduces the new WJ-ND300 Network Disk Recorder with support for up to 32 Ethernet-linked network cameras. This multifunction disk recorder offers combining high image quality with the high frame rate. Plus, it gives you the full, IP-addressing capabilities required to maximize both flexibility and scalability. The possibilities are endless. From systems that exploit existing networks to high-performance systems using dedicated networks, even hybrid systems using analog cameras, the WJ-ND300 meets security needs across a wide range of applications.

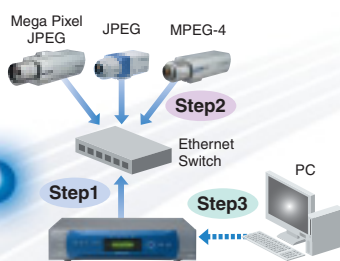
## High Image Quality

The WJ-ND300 is the latest innovation in Panasonic's commitment to your company's security system infrastructure and network performance. Independent camera port and client PC port for applications requiring high image quality, high frame rate and multi-channel capabilities.



## Easy IP Set-up

When *i-pro* Series cameras are connected to the WJ-ND300 Network Disk Recorder, the Easy IP Set-up feature easily locates their IP addresses. (Providing support for upgrades.)



## MPEG-4/JPEG Compatible

This disk recorder can be used with either MPEG-4 or JPEG cameras or in systems combining both. This flexibility allows systems to be tailored precisely to user needs using various combinations of cameras.

## RAID5 Built-In

The Optional RAID5 Board; WJ-NDB301 enables high-level risk management by adding RAID5 capability to the WJ-ND300 itself.



## System Integration with WJ-HD300A Series

Optional Management PC Software WV-AS65 permits simultaneous use of up to 100 WJ-ND300 and WJ-HD300A Series Digital Disk Recorders. By making it easy to construct hybrid systems incorporating existing analog equipment, it brings a new level of flexibility to surveillance and security management.



Management PC Software: WV-AS65

## Usability is the key to a great interface

With your choice of eight languages (English, French, German, Italian, Spanish, Russian, Chinese, Japanese) and simultaneous access to each WJ-ND300 from up to eight clients.

## Instinctive Operation

How simple is simple? Recorder and camera operations are just a click of a mouse away.

## Control Tab

Quick access to rich array of search parameters for images stored in the WJ-ND300. Allows you to list logs in many different ways to facilitate searches for detailed information.

## Filtered Search

Use Time & Date, REC Events, Camera, or Text parameters to filter data.



Camera images can be displayed single screen or four-screen as the sequence.



Main Screen Playback

## Camera Select Tab

To see a live image, simply click on the camera of your choice. Tree-type displays make it easy to organize cameras by floor or in other ways.



On four-window screens, click on this button to enlarge the active window.

## Camera Tab

Use your mouse to control Pan/Tilt, Zoom, and Preset networked camera features. Click on any point within the image to change camera direction. (\*Only with compatible cameras.)

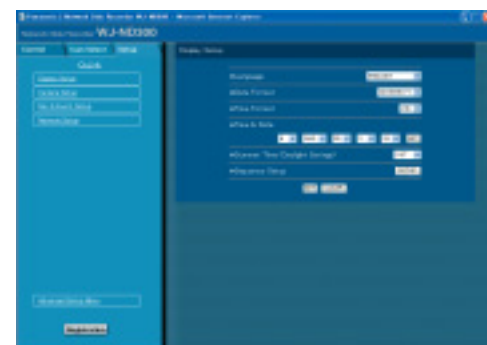
Main Screen Live

## Easy Setup

For quick and easy choose Quick Setup. To fine tune your settings choose Advanced Setup.

## Quick Setup

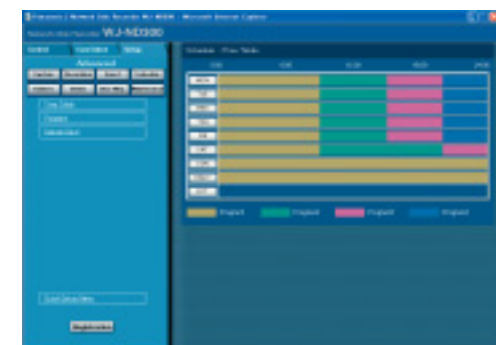
Display Setup, Camera Setup, Rec & Event Setup, and Network Setup: These four simple steps are all it takes to set up a basic system.



Example of screen showing quick setup functions.

## Advanced Setup

System, Recording, Event, Schedule, Camera, Communication, User Management, and Maintenance steps allow you to fine tune your system. Frame rate can be specified for each camera.



It's easy to create a recording schedule time table.

## Measurement Function for Frame Rate Selection

After setting the WJ-ND300's monitoring and recording frame rate, click on the Measurement button to measure and display the frame rate for each camera. A red display signals that the frame rate selected has exceeded the available network bandwidth capacity.



## Maintenance Port Located on the Front Panel

The maintenance port on the front panel of the WJ-ND300 makes it easy to connect the recorder to a PC.

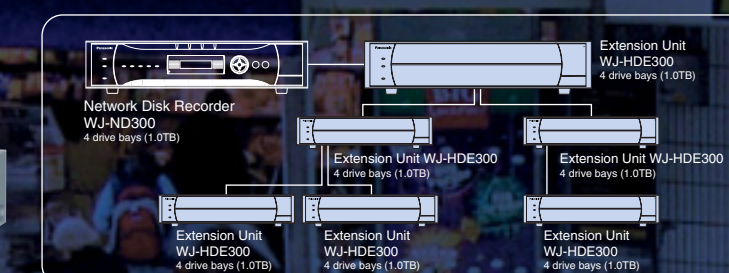
# Outstanding scalability simplifies large system construction

Increase storage capacity, locate WJ-ND300 Network Disk Recorders in multiple locations, combine digital with analog systems. WJ-ND300 makes it so simple.

## Extension Unit WJ-HDE300

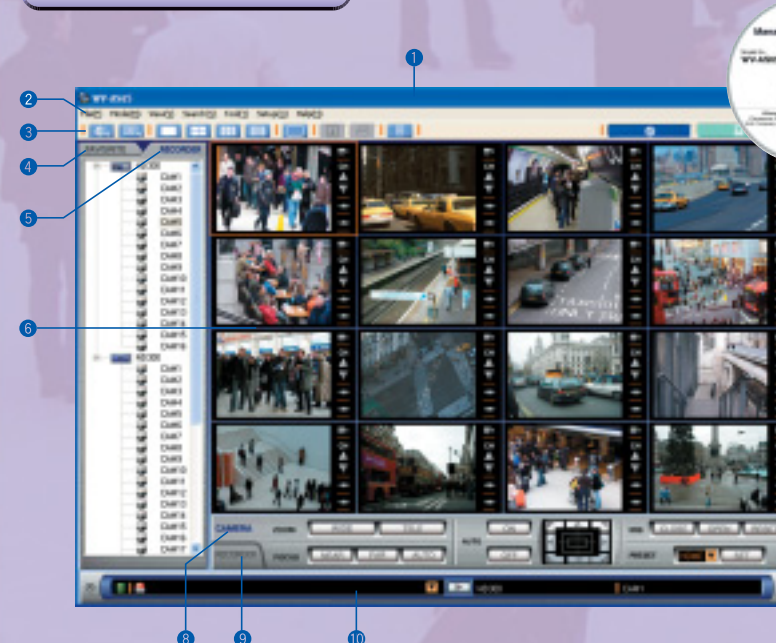
For high-capacity systems with 7TB of storage

The WJ-HDE300 can be equipped with up to 4 disk drives. Systems can have up to 28 drives (one 4-drive WJ-ND300 Network Disk Recorder + six 4-drive WJ-HDE300 Extension Units), for a total of 28 x 250GB = 7TB of storage.



## Management PC Software WV-AS65

For multi-location surveillance using up to 100 WJ-ND300 Recorders



- 1 Title Bar
- 2 Menu Bar
- 3 Tool Bar
- 4 FAVORITE Tab
- 5 RECORDER Tab
- 6 Image Display Area
- 7 Channel Search Buttons
- 8 Camera Control Panel
- 9 Recorder Control Panel
- 10 Status Bar

## Network Mode

Remote control for multiple WJ-ND300 recorders via the network.

## Display up to 16 channels at once

For live monitoring and playback, select a 1, 4, 9 or 16 window display. Drag and drop cameras from the Recorder & Camera Tree to the screen position of your choice.

## Favorite Register

Register up to 500 frames and camera positions for instant access.

## All-at-Once Search

Allows use of Filtered Search for images stored on multiple WJ-ND300 recorders.

## Local Mode

Download images stored on multiple WJ-ND300 recorders to a client PC for Filtered Search, playback and management.

## Two Download Types

Scheduled Download automatically downloads images at designated intervals. Manual Download is used for downloading live or playback images as needed.

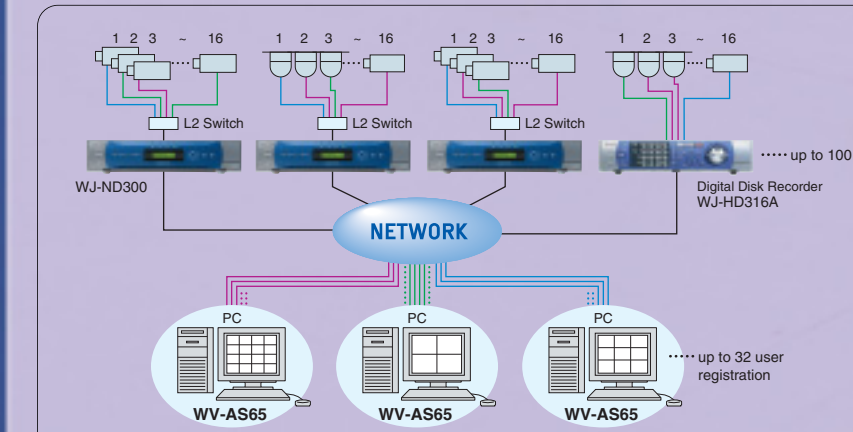
## Maintenance

Optimize PC hard disk space, erase all image files, or automatically delete files at specified intervals.

## SPECIFICATIONS

WJ-ND300 Registration Capacity	up to 100 sets
User Registration Capacity	up to 32 users
User Types	5 types
Schedule Registration Capacity	up to 400 schedules
Favorite Registration Capacity	up to 500
Simultaneous Downloads	up to 10 accesses
Simultaneous Camera Image Displays	up to 16 cameras
Simultaneous File Playbacks	up to 4 files

## SYSTEM DIAGRAM



\*All of the photographs above were taken for the purpose of explanation; actual images may differ.



Network Disk Recorder WJ-ND300

\*This product is using Axis HTTP API version 2.0. Approved by Axis Communications.



## MAJOR OPERATING CONTROLS & TERMINALS

### Front View

### Rear View

- ① Operate Indicator
- ② Alarm Suspension Indicator
- ③ Alarm Indicator
- ④ Error Indicator
- ⑤ Timer Indicator
- ⑥ Recording Indicator
- ⑦ Camera Link Indicator
- ⑧ PC Link Indicator
- ⑨ HDD Access Indicators
- ⑩ LCD
- ⑪ Arrow Button
- ⑫ Escape Button
- ⑬ Set Button
- ⑭ Maintenance Port

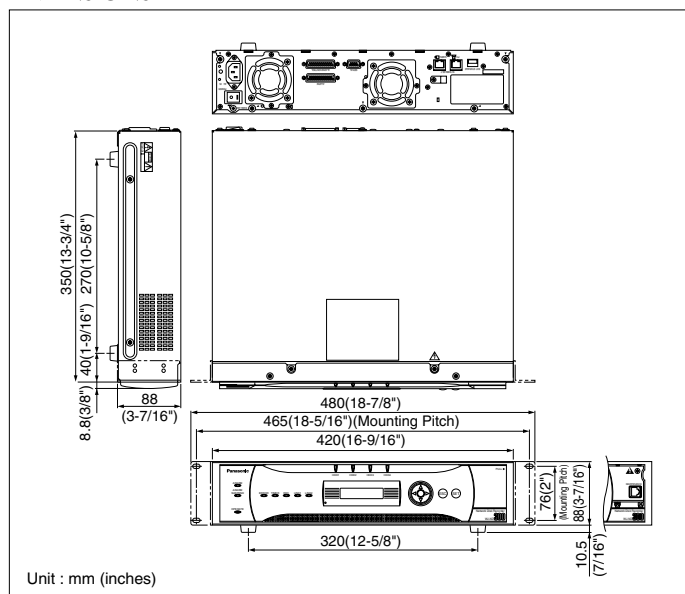
- ① External Storage Connector
- ② Client PC Port
- ③ Camera Port
- ④ Serial Connector (for maintenance purpose)
- ⑤ Alarm Connector
- ⑥ Alarm/Control Connector
- ⑦ Power Switch
- ⑧ Signal Ground Terminal
- ⑨ Power Cord Inlet

## SPECIFICATIONS

General	
<b>Power Source</b>	120 V AC, 60 Hz
<b>Power Consumption</b>	85 W
<b>Ambient Operating Temperature</b>	+5 °C to +45 °C (41 °F - 113 °F)
<b>Ambient Operating Humidity</b>	Less than 85 %
<b>Maximum Operating Altitude</b>	2,000 m (610 feet) above sea level
<b>Dimensions</b>	420 mm (W) x 88 mm (H) x 350 mm (D) [16-9/16" (W) x 3-7/16" (H) x 13-3/4" (D)] (excluding rubber feet and projections)
<b>Weight</b>	8.3 kg (18.3 lbs.)
Input/Output	
<b>External Storage</b>	High-speed serial interface, 480 Mbps (theoretical value), x1
<b>Alarm/Control Connector</b>	Emergency recording input*1, alarm output for available disk space of the HDD copy/event recording area*2, HDD error output*2, camera error output*2, error output*2, power outage recovery completion output*1, time adjustment input/output*3, power outage detection input*1, external recording mode switching*1, alarm output 8-16*2, alarm suspension input*1, alarm reset input*1, network error input*2, +5 V output*4, (D-sub 25-pin)
<b>Alarm Connector</b>	Alarm input 1-16*1, Alarm output 1-7*2, (D-sub 25-pin)
<b>SERIAL Connector</b>	RS-232C, x1 (9-pin D-sub)
<b>Camera Port/PC Port</b>	10 Base-T/100 Base-TX (RJ-45)
<b>Maintenance Port</b>	10 Base-T (RJ-45)

\*1: Non-voltage make contact, -100 mA, +5 V pull-up  
 \*2: Open collector output, 24 V max., 100 mA  
 \*3: 52 kΩ, 5 V pull-up, -100 mA/make contact  
 \*4: 200 mA at maximum

## DIMENSIONS



## OPTIONAL COMPONENTS & ACCESSORIES

<p>Extension Unit <b>WJ-HDE300</b> (4 drive bays for optional HDD units)</p> <p>RAID5 Board <b>WJ-NDB301</b></p>	<p>Management PC Software <b>WV-AS65</b></p>	<p>Mega Pixel Color Network Camera <b>WV-NP1004</b></p> <ul style="list-style-type: none"> <li>• MPEG-4/JPEG output</li> <li>• 600 TV lines</li> </ul> <p>Lens: optional</p>	<p>Network Security Color Camera <b>WV-NP244</b></p> <ul style="list-style-type: none"> <li>• MPEG-4/JPEG output</li> <li>• SD Memory card slot</li> </ul> <p>Lens: optional</p>	<p>Network Security Color Camera <b>WV-NP472</b></p> <ul style="list-style-type: none"> <li>• Super Dynamic II</li> <li>• Day/Night function</li> </ul> <p>Lens: optional</p>	<p>Vandal Proof Network Color Dome Camera <b>WV-NW474S</b></p>	<p>Network Color PTZ Dome Camera <b>WV-NS324</b></p>	<p>Digital Disk Recorders <b>WJ-HD300A Series</b></p> <ul style="list-style-type: none"> <li><b>WJ-HD316A</b> (16ch)</li> <li><b>WJ-HD309A</b> (9ch)</li> </ul>
--	--	--	--	---	--	--	---

**Trademarks and registered trademarks** – Microsoft, and Windows are registered trademarks of Microsoft Corporation in the U.S. and other countries.  
 – Axis is a registered trademark of Axis Communications AB.

**Important** – Safety Precaution: carefully read the operating instructions and installation manual before using this product.  
 – Panasonic can not be responsible for network performance and/or other manufacturer products that reside on the network.

• All TV pictures are simulated. • Weights and dimensions are approximate. • Specifications are subject to change without notice. • These products may be subject to export control regulations.

# Panasonic

**Panasonic System Solutions Company**  
 Unit Company of Panasonic Corporation of North America  
**Security Systems**

Website : [www.panasonic.com/security](http://www.panasonic.com/security)  
 For Customer Support : call **1.877.733.3689**

**Executive Office** : Three Panasonic Way 2H-2, Secaucus, New Jersey 07094  
**Zone Offices**  
**Eastern** : Three Panasonic Way, Secaucus, New Jersey 07094  
**Central** : 1707 N. Randal Road, Elgin, IL 60123  
**Southern** : 1225 Northbrook Parkway, Suwanee, GA 30024  
**Western** : 6550 Katella Ave., Cypress, CA 90630

DISTRIBUTED BY:

**PANASONIC CANADA INC.**  
 5770 Ambler Drive, Mississauga, Ontario, L4W 2T3 Canada (905) 624-5010  
**PANASONIC PUERTO RICO INC.**  
**DIVISION OF PANASONIC CORPORATION OF NORTH AMERICA**  
 San Gabriel Industrial Park, 15th Infantry Ave. KM. 9.5 Carolina, P.R. 00985 (809) 750-4300  
 Printed in Japan  
 WJ-JHND300C(2P-534C)