

NEC

Projector

VE303/VE303X

User's Manual

Model No.
NP-VE303/NP-VE303X

- Virtual Remote Tool uses WinI2C/DDC library, © Nicomsoft Ltd.
- DLP, BrilliantColor, and DLP Link are trademarks of Texas Instruments.
- IBM is a trademark or registered trademark of International Business Machines Corporation.
- Macintosh, Mac OS X, iMac, and PowerBook are trademarks of Apple Inc., registered in the U.S. and other countries.
- Microsoft, Windows, Windows Vista, Internet Explorer, and NET Framework are either a registered trademark or trademark of Microsoft Corporation in the United States and/or other countries.
- MicroSaver is a registered trademark of Kensington Computer Products Group, a division of ACCO Brands in the U.S. and other countries.
- The terms HDMI and HDMI High-Definition Multimedia Interface, and the HDMI Logo are trademarks or registered trademarks of HDMI Licensing LLC in the United States and other countries.



- Blu-ray is a trademark of Blu-ray Disc Association.
- Other product names and logos mentioned in this user's manual may be the trademarks or registered trademarks of their respective holders.

NOTES

- (1) The contents of this user's manual may not be reprinted in part or whole without permission.
- (2) The contents of this user's manual are subject to change without notice.
- (3) Great care has been taken in the preparation of this user's manual; however, should you notice any questionable points, errors or omissions, please contact us.
- (4) Notwithstanding article (3), NEC will not be responsible for any claims on loss of profit or other matters deemed to result from using the Projector.

Important Information

Safety Cautions

Precautions

Please read this manual carefully before using your NEC projector and keep the manual handy for future reference.

CAUTION



To turn off main power, be sure to remove the plug from power outlet. The power outlet socket should be installed as near to the equipment as possible, and should be easily accessible.

CAUTION



TO PREVENT SHOCK, DO NOT OPEN THE CABINET. THERE ARE HIGH-VOLTAGE COMPONENTS INSIDE. REFER SERVICING TO QUALIFIED SERVICE PERSONNEL.



This symbol warns the user that uninsulated voltage within the unit may be sufficient to cause electrical shock. Therefore, it is dangerous to make any kind of contact with any part inside of the unit.



This symbol alerts the user that important information concerning the operation and maintenance of this unit has been provided. The information should be read carefully to avoid problems.

WARNING: TO PREVENT FIRE OR SHOCK, DO NOT EXPOSE THIS UNIT TO RAIN OR MOISTURE. DO NOT USE THIS UNIT'S PLUG WITH AN EXTENSION CORD OR IN AN OUTLET UNLESS ALL THE PRONGS CAN BE FULLY INSERTED.

DOC Compliance Notice (for Canada only)

This Class B digital apparatus complies with Canadian ICES-003.

Machine Noise Information Regulation - 3. GPSGV,

The highest sound pressure level is less than 70 dB (A) in accordance with EN ISO 7779.

Disposing of your used product



EU-wide legislation as implemented in each Member State requires that used electrical and electronic products carrying the mark (left) must be disposed of separately from normal household waste. This includes projectors and their electrical accessories or lamps. When you dispose of such products, please follow the guidance of your local authority and/or ask the shop where you purchased the product.



After collecting the used products, they are reused and recycled in a proper way. This effort will help us reduce the wastes as well as the negative impact such as mercury contained in a lamp to the human health and the environment at the minimum level. The mark on the electrical and electronic products only applies to the current European Union Member States.



For EU: The crossed-out wheeled bin implies that used batteries should not be put to the general household waste. There is a separate collection system for used batteries, to allow proper treatment and recycling in accordance with legislation.

According the EU directive 2006/66/EC, the battery can't be disposed improperly. The battery shall be separated to collect by local service.

WARNING TO CALIFORNIA RESIDENTS:

Handling the cables supplied with this product will expose you to lead, a chemical known to the State of California to cause birth defects or other reproductive harm. **WASH HANDS AFTER HANDLING.**

RF Interference (for USA only)

WARNING

The Federal Communications Commission does not allow any modifications or changes to the unit EXCEPT those specified by NEC Display Solutions of America, Inc. in this manual. Failure to comply with this government regulation could void your right to operate this equipment. This equipment has been tested and found to comply with the limits for a Class B digital device, pursuant to Part 15 of the FCC Rules. These limits are designed to provide reasonable protection against harmful interference in a residential installation. This equipment generates, uses, and can radiate radio frequency energy and, if not installed and used in accordance with the instructions, may cause harmful interference to radio communications. However, there is no guarantee that interference will not occur in a particular installation. If this equipment does cause harmful interference to radio or television reception, which can be determined by turning the equipment off and on, the user is encouraged to try to correct the interference by one or more of the following measures:

- Reorient or relocate the receiving antenna.
- Increase the separation between the equipment and receiver.
- Connect the equipment into an outlet on a circuit different from that to which the receiver is connected.
- Consult the dealer or an experienced radio / TV technician for help.

For UK only: In UK, a BS approved power cord with moulded plug has a Black (five Amps) fuse installed for use with this equipment. If a power cord is not supplied with this equipment please contact your supplier.

Important Safeguards

These safety instructions are to ensure the long life of your projector and to prevent fire and shock. Please read them carefully and heed all warnings.

⚠ Installation

- Do not place the projector in the following conditions:
 - on an unstable cart, stand, or table.
 - near water, baths, or damp rooms.
 - in direct sunlight, near heaters, or heat radiating appliances.
 - in a dusty, smoky or steamy environment.
 - on a sheet of paper, cloth, rugs, carpets, or any objects which are damaged or affected by heat.
- If you wish to have the projector installed on the ceiling:
 - Do not attempt to install the projector yourself.The projector must be installed by qualified technicians in order to ensure proper operation and reduce the risk of bodily injury.
In addition, the ceiling must be strong enough to support the projector and the installation must be in accordance with any local building codes.
Please consult your dealer for more information.

WARNING



- Do not place any objects, which are easily affected by heat, in front of the projector lens. Doing so could lead the object to melt by heat that is emitted from the light output.

Place the projector in a horizontal position

The tilt angle of the projector should not exceed 7 degrees, nor should the projector be installed in any way other than the desktop and ceiling mount, otherwise lamp life could decrease dramatically.



⚠ Fire and Shock Precautions ⚠

- Ensure that there is sufficient ventilation and that vents are unobstructed to prevent the build-up of heat inside your projector. Allow at least 4 inches (10cm) of space between your projector and a wall.
- Do not try to touch the exhaust vent as it can become heated while the projector is turned on and immediately after the projector is turned off.



- Prevent foreign objects such as paper clips and bits of paper from falling into your projector. Do not attempt to retrieve any objects that might fall into your projector. Do not insert any metal objects such as a wire or screwdriver into your projector. If something should fall into your projector, disconnect it immediately and have the object removed by a qualified service personnel.
- Do not place any objects on top of the projector.
- Do not touch the power plug during a thunderstorm. Doing so can cause electrical shock or fire.
- The projector is designed to operate on a power supply of 100-240V AC 50/60 Hz. Ensure that your power supply fits this requirement before attempting to use your projector.
- Do not look into the lens while the projector is on. Serious damage to your eyes could result.



- Keep any items (magnifying glass etc.) out of the light path of the projector. The light path being projected from the lamp is extensive, therefore any kind of abnormal objects that can redirect light coming out of the lamp, can cause unpredictable outcome such as a fire or injury to the eyes.
- Do not block the light path between the light source and the lamp with any objects. Doing so could cause the object to catch on fire.
- Do not place any objects, which are easily affected by heat, in front of the projector lamp or a projector exhaust vent.
Doing so could lead to the object melting or getting your hands burned from the heat that is emitted from the light output and exhaust.
- Handle the power cord carefully. A damaged or frayed power cord can cause electric shock or fire.
 - Do not use any power cord other than the one supplied.
 - Do not bend or tug the power cord excessively.
 - Do not place the power cord under the projector, or any heavy object.
 - Do not cover the power cord with other soft materials such as rugs.
 - Do not heat the power cord.
 - Do not handle the power plug with wet hands.
- Turn off the projector, unplug the power cord and have the projector serviced by a qualified service personnel under the following conditions:
 - When the power cord or plug is damaged or frayed.
 - If liquid has been spilled into the projector, or if it has been exposed to rain or water.
 - If the projector does not operate normally when you follow the instructions described in this user's manual.

- If the projector has been dropped or the cabinet has been damaged.
- If the projector exhibits a distinct change in performance, indicating a need for service.
- Disconnect the power cord and any other cables before carrying the projector.
- Turn off the projector and unplug the power cord before cleaning the cabinet or replacing the lamp.
- Turn off the projector and unplug the power cord if the projector is not to be used for an extended period of time.

Remote Control Precautions

- Handle the remote control carefully.
- If the remote control gets wet, wipe it dry immediately.
- Avoid excessive heat and humidity.
- Do not short, heat, or take apart batteries.
- Do not throw batteries into fire.
- If you will not be using the remote control for a long time, remove the batteries.
- Ensure that you have the batteries' polarity (+/-) aligned correctly.
- Do not use new and old batteries together, or use different types of batteries together.
- Dispose of used batteries according to your local regulations.

Lamp Replacement

- Use the specified lamp for safety and performance.
- To replace the lamp, follow all instructions provided on pages 71-72.
- Be sure to replace the lamp when the message [THE LAMP LIFE EXCEEDED] appears. If you continue to use the lamp after the lamp has reached the end of its usable life, the lamp bulb may shatter, and pieces of glass may be scattered in the lamp case. Do not touch them as the pieces of glass may cause injury. If this happens, contact your dealer for lamp replacement.

A Lamp Characteristic

The projector has a discharge lamp for special purposes as a light source.

A lamp has a characteristic that its brightness gradually decreases with age. Also repeatedly turning the lamp on and off will increase the possibility of its lower brightness. The actual lamp life may vary depending upon the individual lamp, the environmental conditions and usage.

CAUTION:

- DO NOT TOUCH THE LAMP immediately after it has been used. It will be extremely hot. Turn the projector off and then disconnect the power cord. Allow at least one hour for the lamp to cool before handling.
- When removing the lamp from a ceiling-mounted projector, make sure that no one is under the projector. Glass fragments could fall if the lamp has been burned out.

Note for US Residents

The lamp in this product contains mercury. Please dispose according to Local, State or Federal Laws.

Note for Canadian Environmental Protection Act, 1999

The lamp in this product contains mercury. Please dispose according to your local authority law.

FOR MORE INFORMATION, CONTACT:

NEC Display Solutions of America, Inc.

500 Park Boulevard, Suite 1100

Itasca, Illinois 60143-1248

TELEPHONE 800-836-0655

www.necdisplay.com

Health precautions to users viewing 3D images

- Before viewing, be sure to read health care precautions that may be found in the user's manual included with your LCD shutter eyeglasses or your 3D compatible content such as DVDs, video games, computer's video files and the like.
To avoid any adverse symptoms, heed the following:
 - Do not use LCD shutter eyeglasses for viewing any material other than 3D images.
 - Allow a distance of 2 m/7 feet or greater between the screen and a user. Viewing 3D images from too close a distance can strain your eyes.
 - Avoid viewing 3D images for a prolonged period of time. Take a break of 15 minutes or longer after every hour of viewing.
 - If you or any member of your family has a history of light-sensitive seizures, consult a doctor before viewing 3D images.
 - While viewing 3D images, if you get sick such as nausea, dizziness, queasiness, headache, eyestrain, blurry vision, convulsions, and numbness, stop viewing them. If symptoms still persist, consult a doctor.

About High Altitude mode

- Set [FAN MODE] to [HIGH ALTITUDE] when using the projector at altitudes approximately 2500 feet/760 meters or higher.
- Using the projector at altitudes approximately 2500 feet/760 meters or higher without setting to [HIGH ALTITUDE] can cause the projector to overheat and the projector could shut down. If this happens, wait a couple minutes and turn on the projector.
- Using the projector at altitudes less than approximately 2500 feet/760 meters and setting to [HIGH ALTITUDE] can cause the lamp to overcool, causing the image to flicker. Switch [FAN MODE] to [AUTO].
- Using the projector at altitudes approximately 2500 feet/760 meters or higher can shorten the life of optical components such as the lamp.

About Copyright of original projected pictures:

Please note that using this projector for the purpose of commercial gain or the attraction of public attention in a venue such as a coffee shop or hotel and employing compression or expansion of the screen image with the following functions may raise concern about the infringement of copyrights which are protected by copyright law. [ASPECT RATIO], [KEYSTONE], Magnifying feature and other similar features.

Table of Contents

Table of Contents.....	1	SETTINGS GENERAL	48
Usage Notice	2	SETTINGS SIGNAL	51
Precautions	2	SETTINGS ADVANCED	53
Introduction.....	4	SETTINGS ADVANCED SECURITY	55
Product Features	4	OPTIONS GENERAL	57
Package Overview	5	OPTIONS LAMP SETTINGS	60
Product Overview	6	OPTIONS INFORMATION	62
Projector.....	6	OPTIONS ADVANCED.....	63
Ports.....	7	Appendices.....	65
Control Panel.....	8	Troubleshooting	65
Remote Control.....	10	Replacing the lamp	71
Quick Key Activate Behavior.....	13	Cleaning procedure for the lens.....	73
Battery Installation	14	Specifications.....	74
Using the Downloadable Software.....	15	Compatibility Modes	77
Viewing 3D Images.....	23	VGA Analog.....	77
Installation	24	HDMI Digital	79
Connecting the Projector	24	HDMI - 3D Timing.....	80
Connect to Computer/Notebook.....	24	Ceiling Mount Installation.....	81
Connect to Video Sources.....	25	Cabinet Dimensions.....	82
Powering On/Off the Projector	26	Pin Assignments of D-Sub COMPUTER Input Connector.....	83
Powering On the Projector	26	PC Control Codes and Cable Connection.....	84
Powering Off the Projector	27	Troubleshooting Check List	85
Warning Indicator	28	REGISTER YOUR PROJECTOR!	87
Adjusting the Projected Image	29		
Adjusting the Height of Projection Image	29		
Adjusting the Projector's Focus.....	30		
Adjusting Projection Image Size (Diagonal).....	31		
User Controls.....	33		
On Screen Display	33		
How to operate	33		
Menu Tree	34		
IMAGE GENERAL.....	37		
IMAGE ADVANCED	40		
SCREEN GENERAL	44		
SCREEN 3D SETTINGS.....	46		

Precautions



Follow all warnings, precautions and maintenance as recommended in this user's guide to maximize the life of your unit.

- Warning- This projector will detect the life of the lamp itself. Please be sure to change the lamp when it shows warning messages.
- Warning- Reset the "CLEAR LAMP HOURS" function from the on-screen display "OPTIONS | LAMP SETTINGS" menu after replacing the lamp module. Please see page 61.
- Warning- When switching the projector off, please ensure the cooling cycle has been completed before disconnecting power.
- Warning- Turn on the projector first and then the signal sources.
- Warning- When the lamp reaches the end of its life, it will burn out and may make a loud popping sound. If this happens, the projector will not turn back on until the lamp module has been replaced. To replace the lamp, follow the procedures listed under "Replacing the Lamp".

Turkish RoHS information relevant for Turkish market
EEE Yönetmeliğine Uygundur.

This device is not intended for use in the direct field of view at visual display workplaces. To avoid incommoding reflections at visual display workplaces, this device must not be placed in the direct field of view.

High gain type screens are not optimal for use with this projector. The lower the screen gain (i.e., screen gain on the order of 1), the better the appearance of the projected image.

Usage Notice

Do:

- Turn off the product before cleaning.
- Use a soft cloth moistened with mild detergent to clean the display housing.
- Disconnect the power plug from AC outlet if the product is not being used for a long period of time.
- If the lens is soiled, use a commercially available cleaning cloth for lens.

Do not:

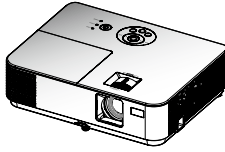
- Use abrasive cleaners, waxes or solvents to clean the unit.
- Use under the following conditions:
 - Extremely heat, cold or humidity.
 - In areas susceptible to excessive dust and dirt.
 - In direct sunlight.
 - Outdoors.
 - Move the projector by holding the cable cover.
 - Hang from the projector in a ceiling or wall mounted installation.
 - Apply excessively strong pressure against the lens.
 - Keep finger prints off the lens surface.
 - Bring the projector using the Security Lock Hunger.
- Install and store in the following conditions:
 - In powerful magnetic fields.
 - In corrosive gas environment.

Product Features

- **High resolution**
True 800x600(SVGA)/1024x768(XGA) resolution.
- **HDMI input port provides digital signal**
The HDMI input provide HDCP compatible digital signals.
The HDMI input also supports audio signal.
- **Quick Power Off, Direct Power Off**
The projector can be put away immediately after the projector is powered on. No cool down period is required after the projector is turned off from the remote control or cabinet control panel.
The projector has a feature called "Direct Power Off". This feature allows the projector to be turned off (even when projecting an image) by using the Main Power Switch or disconnecting the AC power supply. To turn off the AC power supply when the projector is powered on, use a power strip equipped with a switch and a breaker.
- **2.0W speaker for an integrated audio solution**
Powerful 2.0 watt monaural speakers provide volume need for large rooms.
- **3D features supported**
The projector can support following format by DLP® Link.
 - HDMI 3D
 - 120Hz 3D (only available if your PC can output 120Hz)
 - HQFS 3D
- **Preventing unauthorized use of the projector**
Enhanced smart security settings for keyword protection, cabinet control panel lock, security slot, and security chain opening to help prevent unauthorized access, adjustments and theft deterrence.

Package Overview

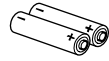
This projector comes with all the items shown below. Check to make sure your unit is completed. Contact your dealer immediately if anything is missing.



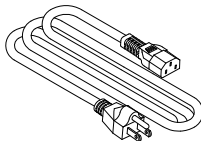
Projector



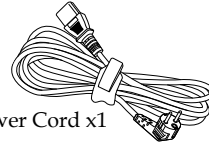
Remote Control
(P/N:7N901052)



Batteries (AAAx2)

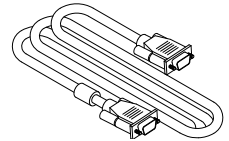


US (P/N:79TC5021)



Power Cord x1

EU (P/N:79TC5031)



Computer Cable (VGA)
(P/N:7N520087)



❖ Due to the difference in applications for each country, some regions may have different accessories.



Security Label

Documentation:

- | | |
|--|---|
| <input type="checkbox"/> NEC Projector CD-ROM
(P/N: 7N952291) | <input type="checkbox"/> Important Information
(P/N: 7N8N6411) |
| <input type="checkbox"/> Quick Setup Guide
(P/N: 7N8N6421) | |

For North America:

- Limited Warranty

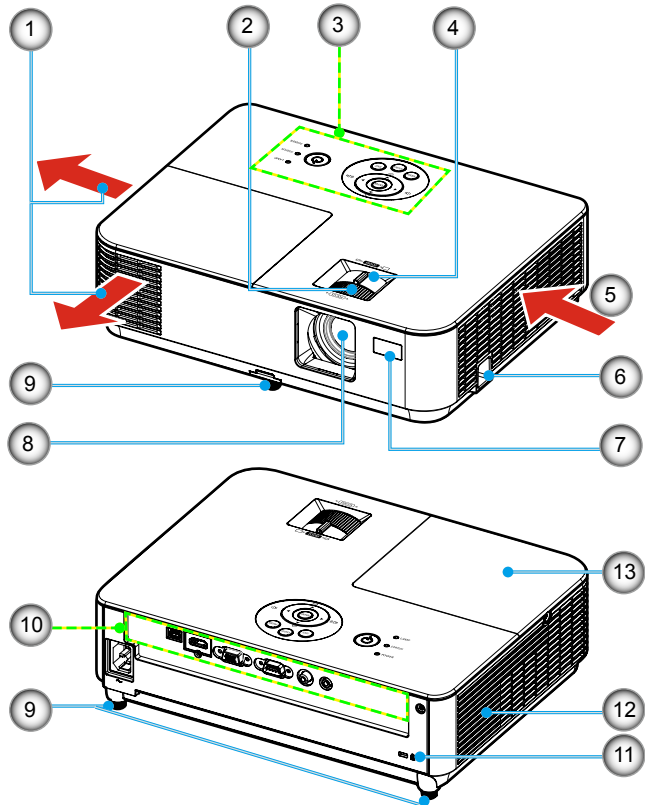
For Europe:

- Guarantee Policy

For customers in Europe: You will find our current valid Guarantee Policy on our Web Site: www.nec-display-solutions.com

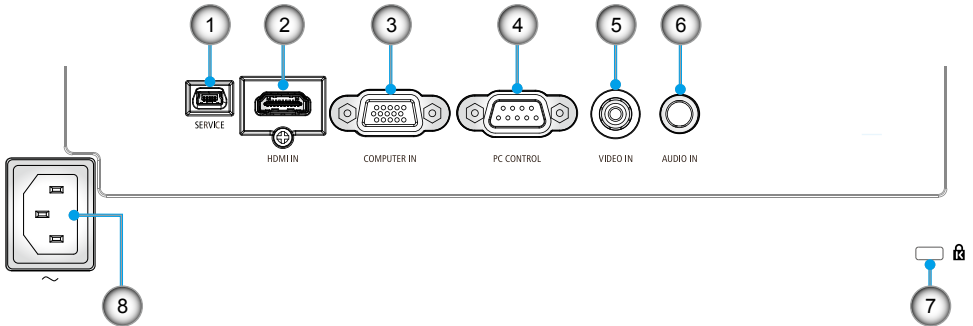
Product Overview


Projector



- | | |
|--------------------------|---------------------------|
| 1. Exhaust Vent | 8. Lens |
| 2. Focus Ring | 9. Tilt Foot |
| 3. Control Panel | 10. Ports |
| 4. Zoom Lever | 11. Kensington™ Lock Port |
| 5. Intake Vent | 12. Speaker |
| 6. Security Lock Hunger | 13. Lamp Cover |
| 7. Remote Control Sensor | |

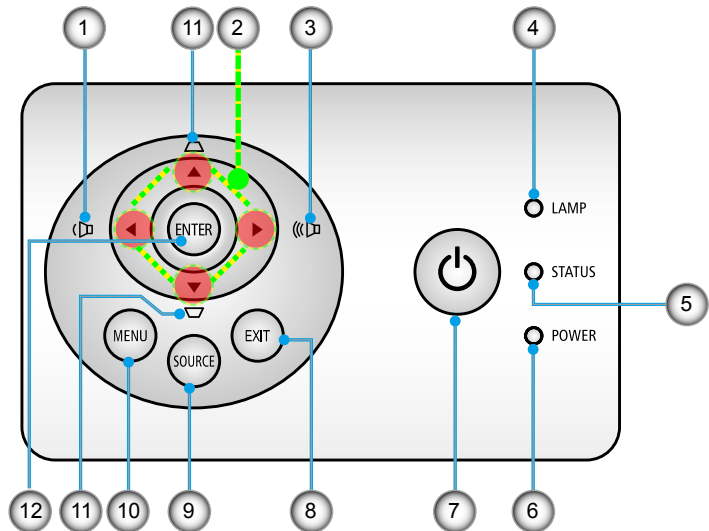
Ports



1. SERVICE Port (for service purpose only)
2. HDMI IN Port
3. COMPUTER IN Port
4. PC CONTROL Port
5. VIDEO IN Port
6. AUDIO IN Jack (3.5mm mini jack)
7. Kensington™ Lock  Port
8. AC IN Terminal

Introduction



Control Panel



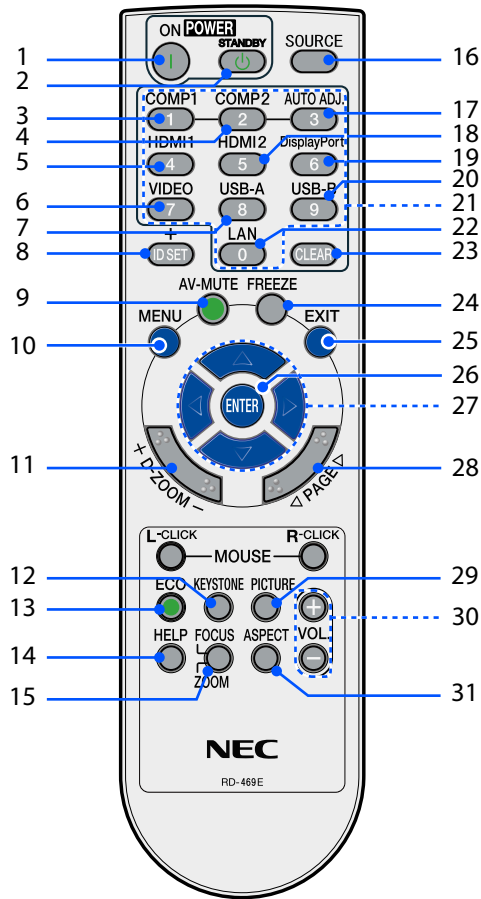
❖ For controlling the speaker volume, use ◀ or ▶.


1	VOLUME -	Decrease speaker volume.
2	Four Directional Select Keys	- Use ▲, ▼, ◀ or ▶ to select items or make adjustments to your selection. - Use as Quick Keys. Please see page 13.
3	VOLUME +	Increase speaker volume.
4	LAMP LED	Indicate the projector's lamp status.
5	STATUS LED	Indicate the projector's various status.
6	POWER LED	Indicate the projector's status.

Introduction

7		POWER	Turn the projector on/off. Please see the “Power On/Off the Projector” section on pages 26-27.
8		EXIT	Press to exit the OSD menu.
9		SOURCE	Press “SOURCE” to select an input signal.
10		MENU	Press “MENU” to launch the Onscreen display (OSD), back to the top level of OSD for the OSD main menu operation.
11		KEYSTONE Correction	Adjust the image to compensate for distortion caused by tilting the projector (vertical ± 40 degrees).
12		ENTER	Confirm your selection of items in sub menu operation.

Remote Control




-
- | | | |
|-------|--|--|
| 1 |  POWER ON | Power on the projector. Please see the "Power On/Off the Projector" section on pages 26-27. |
| <hr/> | | |
| 2 | POWER OFF | Power off the projector. Please see the "Power On/Off the Projector" section on pages 26-27. |
-

Introduction

3	COMPUTER 1	Press "1" to choose Computer IN port.
4	COMPUTER 2	No function.
5	HDMI 1	Press "4" to choose HDMI port.
6	VIDEO	Press "7" to choose VIDEO IN port.
7	USB-A	No function.
8	ID SET	Press ID SET for indicating the ID number.
9	AV-MUTE	Momentarily turn off/on the audio and video.
10	MENU	Press "MENU" to launch the on screen display (OSD), back to the top level of OSD for the OSD main menu operation
11	D-ZOOM	Zoom in/out the projected image.
12	KEYSTONE Correction	Adjust the image to compensate for distortion caused by tilting the projector.
13	ECO	Dim the projector lamp which will lower power consumption and extend the lamp life. Please see page 60.
14	HELP	This function ensures easy setup and operation.
15	FOCUS/ ZOOM	No function.
16	SOURCE	Press "SOURCE" to select the desired input source.
17	AUTO ADJ.	Automatically synchronize the projector to the input source.
18	HDMI 2	No function.
19	DISPLAYPORT	No function.

Introduction

20	USB-B	No function.
21	Number Button	No function.
22	LAN	No function.
23	CLEAR	Clear the password while you input the password.
24	FREEZE	To pause the screen image. Press again to resume the screen image.
25	EXIT	Exit the settings.
26	ENTER	Confirm your section of items in sub menu operation.
27	 Four Directional Select Buttons	- Use the ▲, ▼, ◀, or ▶ button to select items or make adjustments to your selection. When the image is magnified by using the D-ZOOM+ button, the ▲, ▼, ◀, or ▶ button moves the image. - Use as Quick Keys. Please see page 13.
28	PAGE	No function.
29	PICTURE Mode	Select the Picture mode from PRESENTATION, HIGH-BRIGHT, VIDEO, MOVIE, sRGB, BLACKBOARD, USER1, or USER2.
30	VOL. +/-	Increase/decrease speaker volume.
31	ASPECT	Use this function to choose your desired aspect ratio. Please see page 44.



❖ When the demagnified image is displayed, the ▲, ▼, ◀, or ▶ button is not available to move the image.

Quick Key Activate Behavior

Quick keys are available when no OSD is displayed.

The Quick Keys can be accessed on Control Panel or remote control (◀▶).

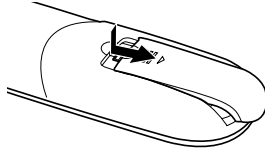
The behavior of the Quick Keys is as described in the following table:

Quick Key	Function	Activate Condition
LEFT (◀)/ RIGHT (▶)	Pop Volume OSD and allow user to adjust.	No OSD Display
UP (▲)/ DOWN (▼)	Pop Vertical Keystone OSD and allow user to adjust.	

Introduction

Battery Installation

1. Press firmly and slide the battery cover off.

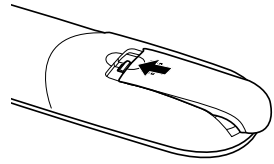
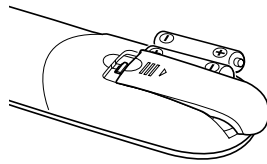


2. Install new batteries (AAA). Ensure that you have the batteries' polarity (+/-) aligned correctly.
3. Slip the cover back over the batteries until it snaps into place. Do not mix different types of batteries or new and old batteries.



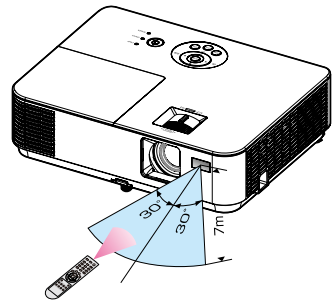
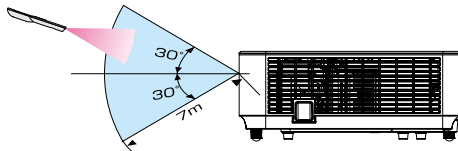
❖ The infrared signal operates by line-of-sight up to a distance of about 22 feet/7 m and within a 60-degree angle of the remote sensor on the projector cabinet.

❖ The projector will not respond if there are objects between the remote control and the sensor, or if strong light falls on the sensor. Weak batteries will also prevent the remote control from properly operating the projector.



Remote Control Precautions

- Handle the remote control carefully.
- If the remote control gets wet, wipe it dry immediately.
- Avoid excessive heat and humidity.
- Do not place the battery upside down.
- Replace only with the same or equivalent type recommended by the manufacturer.
- Dispose of used batteries according to your local regulations.



Using the Downloadable Software



❖ When “Computer IN” is selected for input, the Virtual Remote screen or the toolbar will be displayed as well as your computer screen.

❖ Use the supplied computer cable (VGA) to connect the COMPUTER IN connector directly with the monitor output connector of the computer to use Virtual Remote Tool. Using a switcher or other cables than the supplied computer cable (VGA) may cause failure in signal communication. VGA cable connector: Pin Nos. 12 and 15 are required for DDC/CI.

❖ Virtual Remote Tool may not work depending on your computer’s specifications and version of graphic adapters or drivers.

Using the Computer Cable (VGA) to Operate the Projector (Virtual Remote Tool)

Using the utility software “Virtual Remote Tool” that you can download from our web site (<http://www.nec-display.com/dl/en/index.html>), Virtual Remote screen (or toolbar) can be displayed on your computer screen.

This will help you perform operations such as projector’s power on or off and signal selection via the computer cable (VGA) or serial cable.



Virtual Remote screen



Toolbar

This section provides an outline of preparation for use of Virtual Remote Tool.

For information on how to use Virtual Remote Tool, see Help of Virtual Remote Tool. Please refer to page 19.

Step 1: Install Virtual Remote Tool on the computer. Please refer to page 16.

Step 2: Connect the projector to the computer. Please refer to page 17.

Step 3: Start Virtual Remote Tool. Please refer to page 18.

TIP:

- Virtual Remote Tool can be used with a serial connection.
- For update information on Virtual Remote Tool, visit our website: <http://www.nec-display.com/dl/en/index.html>
- The projector’s COMPUTER IN connector supports DDC/CI (Display Data Channel Command Interface). DDC/CI is a standard interface for bidirectional communication between display/projector and computer.

Introduction

NOTE

❖ To install or uninstall the program, the Windows user account must have [Administrator] privilege (Windows 8.1, Windows 8, Windows 7, and Windows Vista).

❖ Exit all running programs before installation. If another program is running, the installation may not be completed.

Step 1: Install Virtual Remote Tool on the computer

• Supported OS

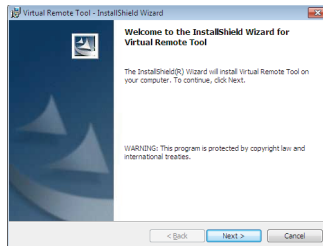
Virtual Remote Tool will run on the following operating systems.
Windows 8.1 *1, Windows 8.1 Pro *1, Windows 8.1 Enterprise *1, Windows 8 *1,
Windows 8 Pro *1, Windows 8 Enterprise *1,
Windows 7 Home Basic, Windows 7 Home Premium, Windows 7 Professional,
Windows 7 Enterprise, Windows 7 Ultimate
Windows Vista Home Basic, Windows Vista Home Premium, Windows Vista
Business,
Windows Vista Enterprise, Windows Vista Ultimate
Windows XP Home Edition *1, Windows XP Professional

*1: To run Virtual Remote Tool, "Microsoft .NET Framework Version 2.0" is required. The Microsoft .NET Framework Version is available from Microsoft's web page. Install the Microsoft .NET Framework Version 2.0, 3.0 or 3.5 on your computer.

1 Download the updated VRT exe file from our web site
(<http://www.nec-display.com/dl/en/index.html>).

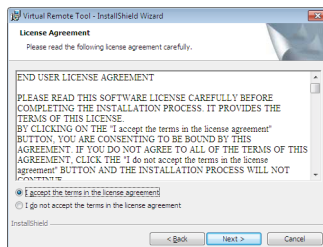
2 Double-click the VRT. exe icon.

The Installer will start and the Wizard screen will appear.



3 Click "Next".

"END USER LICENSE AGREEMENT" screen will be displayed.



Read "END USER LICENSE AGREEMENT" carefully.

4 If you agree, click “I accept the terms in the license agreement” and then click “Next”.

Follow the instructions on the installer screens to complete the installation.



After the installation is completed, the shortcut icon for Virtual Remote Tool will be displayed on the screen.

TIP:Uninstalling Virtual Remote Tool

- Preparation
Exit Virtual Remote Tool before uninstallation. To uninstall Virtual Remote Tool, the Windows user account must have “Administrator” privilege
“(Windows 8.1, Windows 8, Windows 7 and Windows Vista)” or
“Computer Administrator” privilege (Windows XP).
- For Windows 8.1/Windows 8/Windows 7/Windows Vista
 1. Click “Start” and then “Control Panel”.
The Control Panel window will be displayed.
 2. Click “Uninstall a program” under “Programs”.
The “Programs and Features” window will be displayed.
 3. Select Virtual Remote Tool and click it.
 4. Click “Uninstall/Change” or “Uninstall”.
When the “User Account Control” window is displayed, click
“Continue”. Follow the instructions on the screens to complete the
uninstallation.
- For Windows XP
 1. Click “Start” and then “Control Panel”.
The Control Panel window will be displayed.
 2. Double-click “Add / Remove Programs”.
The Add / Remove Programs window will be displayed.
 3. Click Virtual Remote Tool from the list and then click “Remove”.
Follow the instructions on the screens to complete the uninstallation.

Step 2: Connect the projector to the computer

- 1 Use the supplied computer cable (VGA) to connect the COMPUTER IN connector of the projector directly with the monitor output connector of the computer.
- 2 Connect the supplied power cord to the AC IN of the projector and the wall outlet.

The projector is in the standby condition.

Introduction

Step 3: Start Virtual Remote Tool

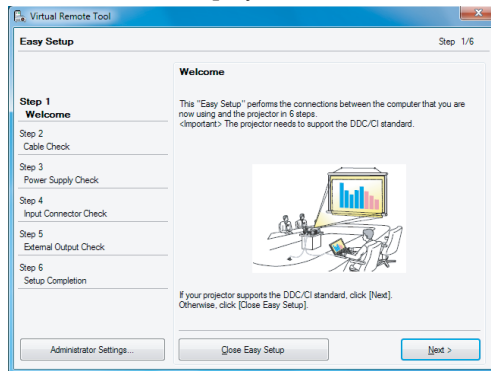
Start using the shortcut icon



Start from the Start menu

Click [Start] -> [All Programs] or [Programs] -> [NEC Projector User Supportware] -> [Virtual Remote Tool] -> [Virtual Remote Tool].

When Virtual Remote Tool starts for the first time, “Easy Setup” window will be displayed.




Follow the instructions on the screens.

When “Easy Setup” is completed, the Virtual Remote Tool screen will be displayed.

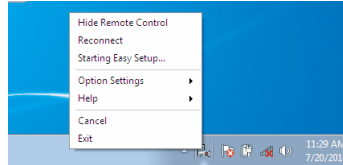
TIP:

- When Virtual Remote Tool starts for the first time, “Easy Setup” window will be displayed to navigate your connections.
- The Virtual Remote Tool screen (or Toolbar) can be displayed without displaying “Easy Setup” window.
To do so, click to place a check mark for “Do not use Easy Setup next time” on the screen at Step 6 in “Easy Setup”.

Exiting Virtual Remote Tool

1 Click the Virtual Remote Tool icon  on the Taskbar.

The pop-up menu will be displayed.



2 Click "Exit".

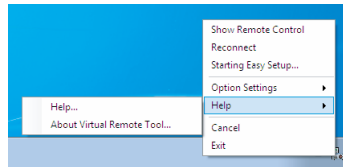
The Virtual Remote Tool will be closed.

Viewing the help file of Virtual Remote Tool

Displaying the help file using the taskbar

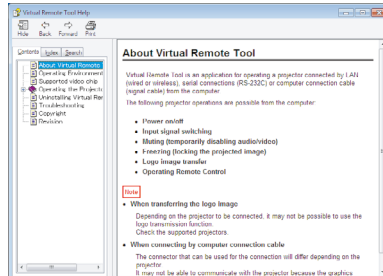
1 Click the Virtual Remote Tool icon on the taskbar when Virtual Remote Tool is running.

The pop-up menu will be displayed.



2 Click "Help".

The Help screen will be displayed.



Displaying the help file using the Start Menu.

Click "Start" -> "All programs" or "Programs" -> "NEC Projector User Supportware" -> "Virtual Remote Tool" and then "Virtual

Remote Tool Help" in this order.

The Help screen will be displayed.

Controlling the Projector via the Serial Connection (PC Control Utility Pro 4)

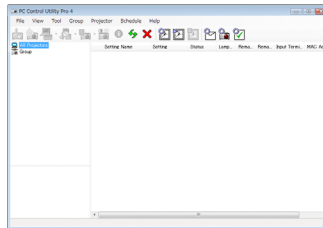
Using the utility software "PC Control Utility Pro 4" that you can download from our web site (<http://www.nec-display.com/dl/en/index.html>), the projector can be controlled from a computer via the serial connection.

Control Functions

Power On/Off, signal selection, picture freeze, picture mute, audio mute, adjusting, error message notification, event schedule.



❖ Error notification function is not available on this projector.



Screen of PC Control Utility Pro 4

This section provides an outline of preparation for use of PC Control Utility Pro 4. For information on how to use PC Control Utility Pro 4, see Help of PC Control Utility Pro 4.

- Step 1: Install PC Control Utility Pro 4 on the computer. Please see page 21.
- Step 2: Connect the projector with the computer by a serial cable.
- Step 3: Start PC Control Utility Pro 4. Please see page 22.

TIP:

- For update information on PC Control Utility Pro 4, visit our website: <http://www.nec-display.com/dl/en/index.html>

Introduction

Step 1: Install PC Control Utility Pro 4 on the computer

- Supported OS - PC Control Utility Pro 4 will run on the following operating systems.

Windows 8.1*1, Windows 8.1 Pro *1, Windows 8.1 Enterprise *1, Windows 8 *1, Windows 8 Pro *1, Windows 8 Enterprise *1, Windows 7 Home Basic, Windows 7 Home Premium, Windows 7 Professional, Windows 7 Enterprise, Windows 7 Ultimate
Windows Vista Home Basic, Windows Vista Home Premium, Windows Vista Business, Windows Vista Enterprise, Windows Vista Ultimate
Windows XP Home Edition *1, Windows XP Professional *1



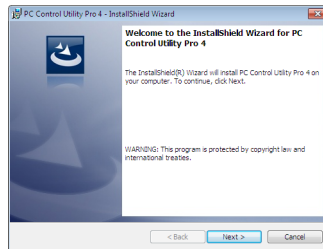
- ❖ To install or uninstall the program, the Windows user account must have [Administrator] privilege (Windows 8.1, Windows 8, Windows 7, and Windows Vista)
- ❖ Exit all running programs before installation. If another program is running, the installation may not be completed.

*1: To run PC Control Utility Pro 4, "Microsoft .NET Framework Version 2.0" is required. The Microsoft .NET Framework Version is available from Microsoft's web page. Install the Microsoft .NET Framework Version 2.0, 3.0 or 3.5 on your computer.

1 *Connect your computer to the Internet and download the updated PCCUP4 exe file from our web site (<http://www.nec-display.com/dl/en/index.html>).*

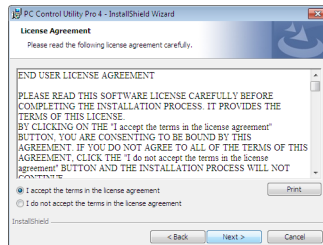
2 *Double-click the PCCUP4. exe icon.*

The Installer will start and the Wizard screen will appear.



3 *Click "Next".*

"END USER LICENSE AGREEMENT" screen will be displayed.



Introduction



❖ For the Schedule function of the PC Control utility Pro 4 to work, you must have your computer running and not in standby/sleep mode. Select “Power Options” from the “Control Panel” in Windows and disable its standby/sleep mode before running the scheduler.

[Example] For Windows 7:

Select “Control Panel” -> “System and Security” -> “Power Options” -> “Change when the computer sleeps” -> “Put the computer to sleep” -> “Never”.

Read “END USER LICENSE AGREEMENT” carefully.

4 If you agree, click “I accept the terms in the license agreement” and then click “Next”.

Follow the instructions on the installer screens to complete the installation.

TIP:Uninstalling PC Control Utility Pro 4

- To uninstall PC Control Utility Pro 4, do the same procedures stated as in “Uninstalling Virtual Remote Tool”. Read “Virtual Remote Tool” as “PC Control Utility Pro 4”

Step 2: Connect the projector with the computer by a serial cable

Connect the PC CONTROL port on the projector and the serial port on the computer by a serial cable according to the instructions in “Connecting the Projector” on page 24.

Step 3: Start PC Control Utility Pro 4

Click “Start” -> “All programs” or “Programs” -> “NEC Projector User Supportware” -> “PC Control Utility Pro 4” -> “PC Control Utility Pro 4”.

TIP: Viewing the Help of PC Control Utility Pro 4

- Displaying the Help file of PC Control Utility Pro 4 while it is running.
Click “Help (H)” -> “Help (H)” of window of PC Control Utility Pro 4 in this order.
The pop-up menu will be displayed.
- Displaying the help file using the Start Menu.
Click “Start” -> “All programs” or “Programs” -> “NEC Projector User Supportware” -> “PC Control Utility Pro 4” -> “PC Control Utility Pro 4 Help”.
The Help screen will be displayed.

Viewing 3D Images

The projector provides 3D images to a user wearing commercially available LCD shutter eyeglasses.

CAUTION

Health precautions

Before viewing, be sure to read health care precautions that may be found in the user's manual included with your LCD shutter eyeglasses or your 3D compatible content such as DVDs, video games, computer's video files and the like.

To avoid any adverse symptoms, heed the following:

- Do not use LCD shutter eyeglasses for viewing any material other than 3D images.
- Allow a distance of 2 m/7 feet or greater between the screen and a user. Viewing 3D images from too close a distance can strain your eyes. Avoid viewing 3D images for a prolonged period of time. Take a break of 15 minutes or longer after every hour of viewing.
- If you or any member of your family has a history of light-sensitive seizures, consult a doctor before viewing 3D images.
- While viewing 3D images, if you get sick such as nausea, dizziness, queasiness, headache, eyestrain, blurry vision, convulsions, and numbness, stop viewing them. If symptoms still persist, consult a doctor.
- View 3D images from the front of the screen. Viewing from an angle may cause fatigue or eyestrain.

LCD shutter eyeglasses

- Use commercially available 3D eyeglasses which meet the following requirements:
 - DLP® Link compatible
 - Support vertical refresh rate up to 144 Hz.

Steps for viewing 3D images on the projector

1. Connect the projector to your video equipment.
2. Turn on the projector, display the on-screen menu.
3. Select [3D SETTINGS] from [SCREEN] tab and then select [ON] for [3D].
 - Set for [3D INVERT] and [3D STRUCTURE] as necessary. Please see pages 46-47.
4. Play your 3D compatible content and use the projector to display the image.
5. Put on your LCD shutter eyeglasses to view 3D images.

Also refer to the user's manual accompanied with your LCD shutter eyeglasses for more information.

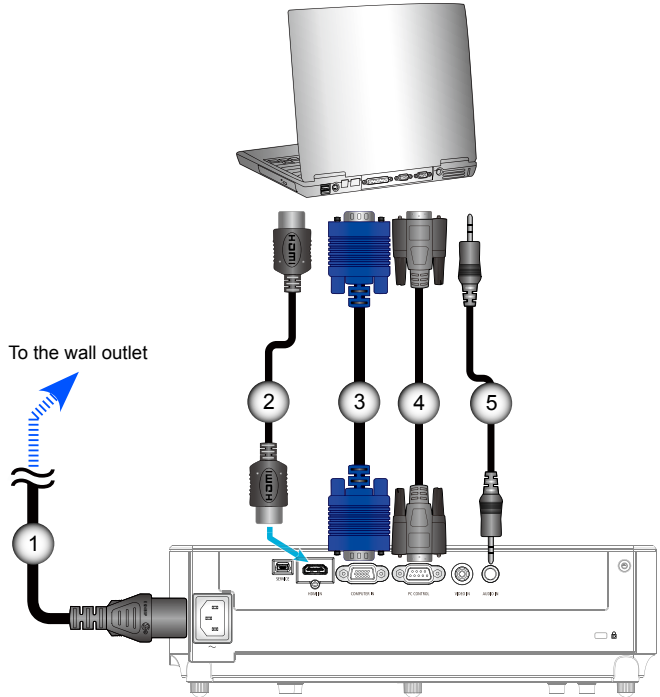
Installation

Connecting the Projector

Connect to Computer/Notebook



❖ Make sure that the power plug is fully inserted into both the projector AC IN terminal and the wall outlet.



- | | |
|--------|---------------------------------|
| 1..... | Power cord (supplied) |
| 2..... | HDMI cable |
| 3..... | Computer cable (VGA) (supplied) |
| 4..... | RS232 cable |
| 5..... | Audio cable |

Connect to Video Sources

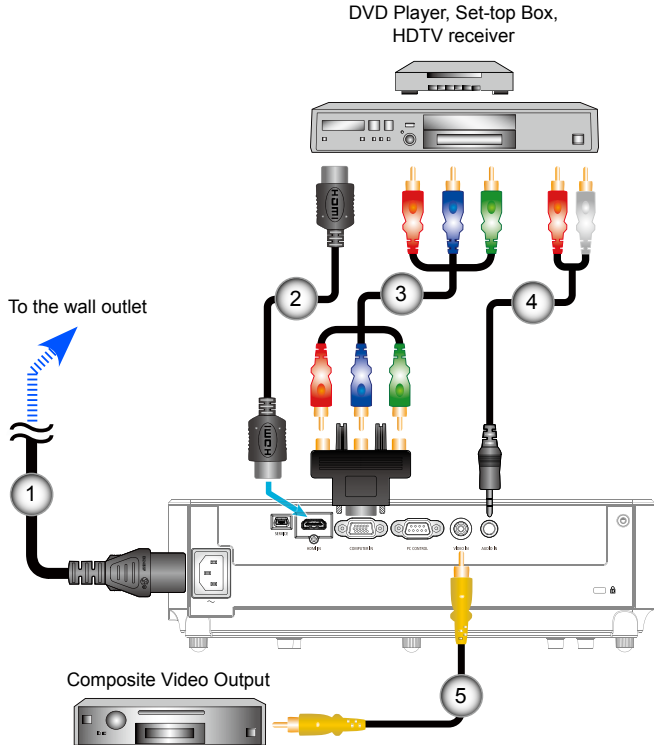


❖ Make sure that the power plug is fully inserted into both the projector AC IN terminal and the wall outlet.



❖ Due to the difference in applications for each country, some regions may have different accessories.

❖ When Deep Color is set to ON on your HDMI equipment, video or audio noise may be generated depending on the equipment or cable being used. Should this happen, set Deep Color to OFF (8 bit).



- | | |
|--------|--|
| 1..... | Power cord (supplied) |
| 2..... | HDMI cable* |
| 3..... | 15-Pin to 3 RCA Component/HDTV Adaptor |
| 4..... | Audio Cable/RCA |
| 5..... | Composite video cable |

*HDMI cable: Use High Speed HDMI® Cable.

Powering On/Off the Projector

NOTE


❖ When you first turn on the projector, you will get the Startup menu. This menu gives you the opportunity to select the menu languages. To select the language, use the ▲, ▼, ◀, ▶, or ► button on the remote control. Select your language. Please see page 48.

❖ While the POWER LED indicator is blinking green in short cycles, the power cannot be turned off by using the “POWER OFF” button.

NOTE

❖ Turn on the projector first and then the signal sources.

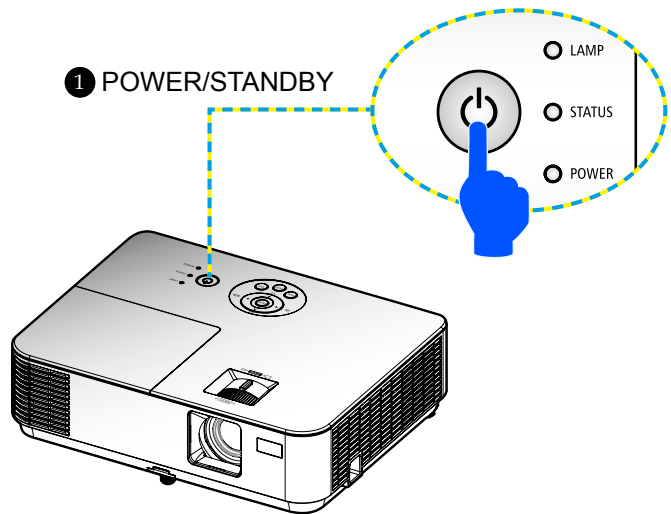
Powering On the Projector

1. Securely connect the power cord and signal cable. When connected, the POWER/STANDBY LED will turn Red or Orange (*).
2. Turn on the projector by pressing the “POWER ON” button on the remote control or the  button on the control panel. At this moment, the POWER/STANDBY LED will now turn Green. **1**

The startup screen will display in approximately 10 seconds. The first time you use the projector, you will be asked to select the preferred language and power saving mode.

3. Turn on your source (computer, notebook, video player, etc.) The projector will detect your source automatically.


❖ If you connect multiple sources at the same time, press the “SOURCE” button on the control panel or direct source keys on the remote control to switch between inputs.



Powering Off the Projector



❖ While the POWER LED indicator is blinking green in short cycles, the power cannot be turned off by using the “POWER OFF” button.

1. Press the “POWER OFF” button on the remote control or the  button on the control panel to turn off the projector lamp, you will see a message as below on the on-screen display.



2. Press the “POWER OFF” button again to confirm.
3. Disconnect the power cord from the electrical outlet and the projector. If you disconnect the power cord while viewing the picture and connect the power cord again, wait for at least one second until you connect the power cord again.



❖ For more information on STATUS LED indicator, please see pages 68-69.

Warning Indicator

- ❖ When the “STATUS” LED indicator flashes red, it indicates the projector has overheated. The projector will automatically shut itself down.

WARNING! TEMPERATURE TOO HIGH

1. MAKE SURE AIR IN AND OUTLETS ARE NOT BLOCKED.
2. MAKE SURE THE ENVIRONMENT TEMPERATURE IS UNDER 40 DEGREE C

- ❖ When the “LAMP” LED indicator turns red and the message below displays on-screen, the projector has detected that the lamp is approaching its end of life. When you see this message, change the lamp as soon as possible.

WARNING! LAMP

LAMP WARNING
LAMP LIFE IS ABOVE LIMIT TIME. LAMP OFF!

WARNING! LAMP

LAMP WARNING
LAMP LIFE EXCEEDED.

- ❖ When the “STATUS” LED indicator flashes red and the message below displays on-screen, it indicates the fan failed. Stop using the projector and disconnect the power cord from the electrical outlet, then contact your local dealer or our service center.

WARNING! FAN LOCKED

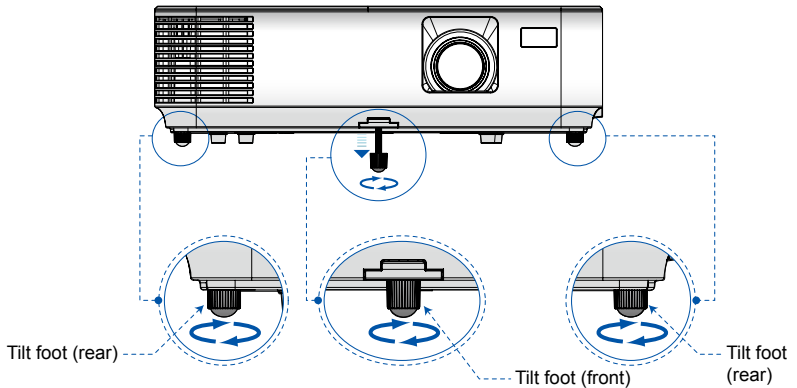
THE PROJECTOR WILL SWITCH OFF AUTOMATICALLY.

Adjusting the Projected Image

Adjusting the Height of Projection Image

The projector is equipped with tilt feet to raise and lower the image to fill the screen.

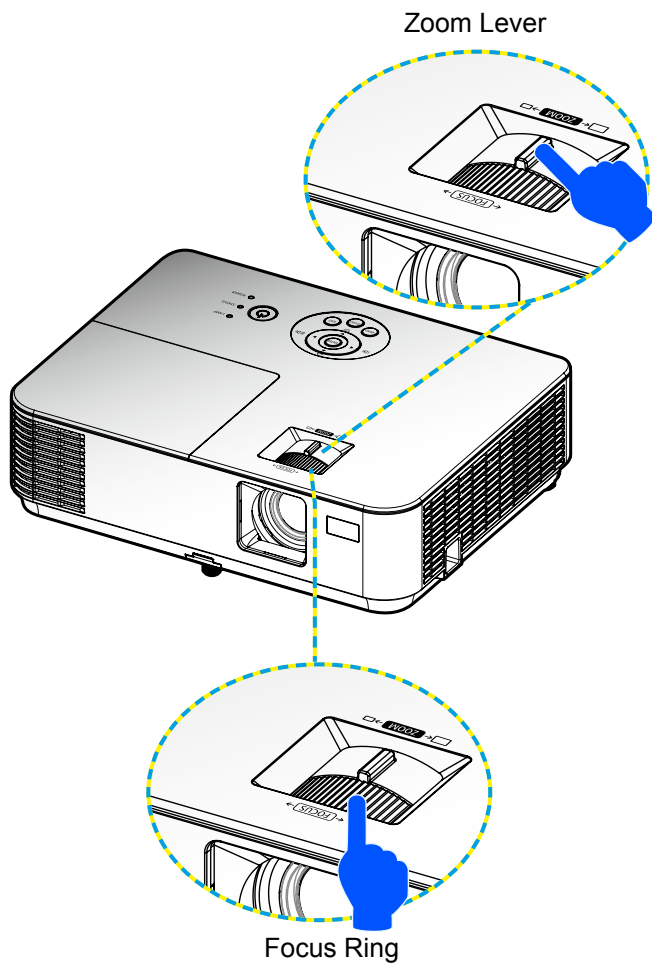
1. Locate the tilt foot you wish to modify on the underside of the projector.
2. Rotate the tilt foot clockwise to raise the projector or counter-clockwise to lower it. Repeat with the remaining feet as necessary.



Installation

Adjusting the Projector's Focus

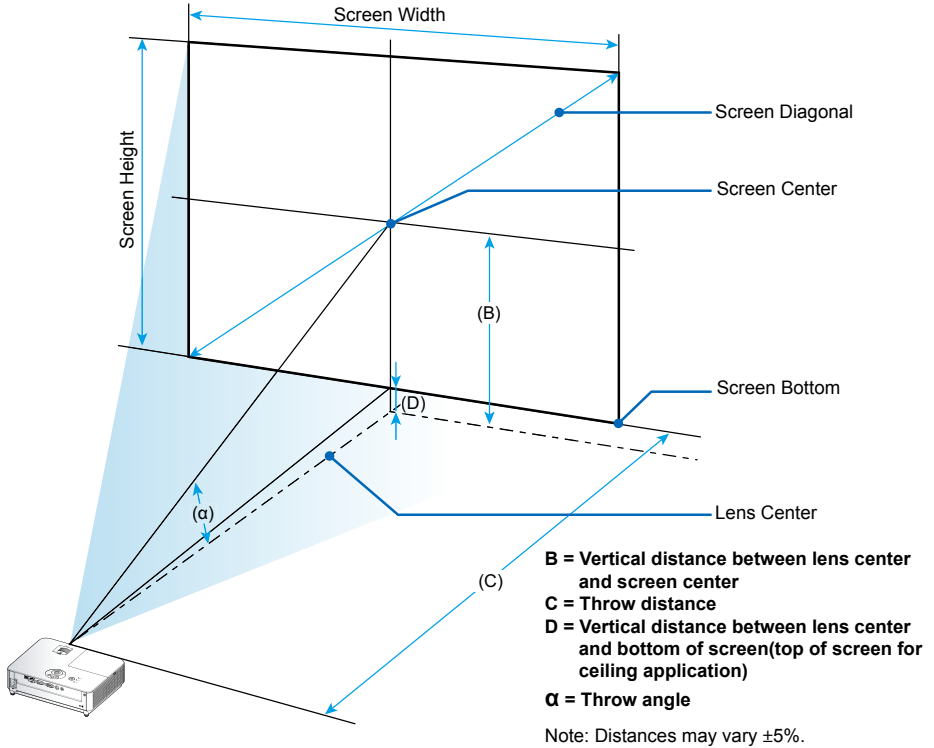
To focus the image, rotate the focus ring until the image is clear.
To zoom the image, turn the zoom lever in or out.



Installation

Adjusting Projection Image Size (Diagonal)

Projection Image Size from 30" to 300" (0.76 to 7.62 meters).



Screen Size						(B)		(C)				D (WIDE)		α	
Diagonal		Width		Height				Wide		Tele				Wide	Tele
inch	mm	inch	mm	inch	mm	inch	mm	inch	mm	inch	mm	inch	mm	degree	degree
30	762	24	610	18	457	12	297	47	1189	52	1311	3	69	14.0	12.8
40	1016	32	813	24	610	16	396	62	1585	69	1747	4	91	14.0	12.8
60	1524	48	1219	36	914	23	594	94	2377	103	2621	5	137	14.0	12.8
70	1778	56	1422	42	1067	27	693	109	2773	120	3058	6	160	14.0	12.8
80	2032	64	1626	48	1219	31	792	125	3169	138	3495	7	183	14.0	12.8

Installation

Screen Size						(B)		(C)				D (WIDE)		α	
Diagonal		Width		Height				Wide		Tele				Wide	Tele
inch	mm	inch	mm	inch	mm	inch	mm	inch	mm	inch	mm	inch	mm	degree	degree
90	2286	72	1829	54	1372	35	891	140	3566	155	3932	8	206	14.0	12.8
100	2540	80	2032	60	1524	39	990	156	3962	172	4368	9	228	14.0	12.8
120	3048	96	2438	72	1829	47	1188	187	4754	206	5242	11	274	14.0	12.8
150	3810	120	3048	90	2286	58	1486	234	5943	258	6553	13	343	14.0	12.8
180	4572	144	3658	108	2743	70	1783	281	7131	310	7863	16	411	14.0	12.8
200	5080	160	4064	120	3048	78	1981	312	7923	344	8737	18	457	14.0	12.8
240	6096	192	4877	144	3658	94	2377	374	9508	413	10484	22	548	14.0	12.8
270	6858	216	5486	162	4115	105	2674	421	10697	464	11795	24	617	14.0	12.8
300	7620	240	6096	180	4572	117	2971	468	11885	516	13105	27	685	14.0	12.8

* This table is for user's reference only.

* The values in the tables are design values and may vary.

On Screen Display

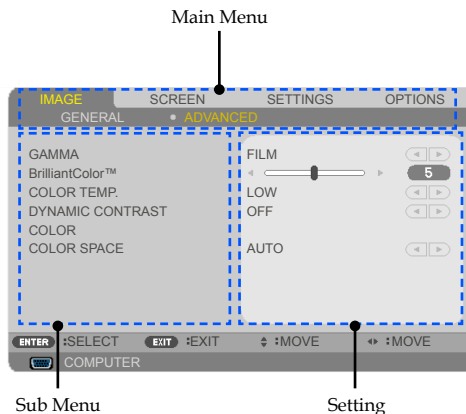
The Projector has a multilingual On Screen Display that allows you to make image adjustments and change a variety of settings.

How to operate

1. To open the OSD, press the MENU button on the remote control.
2. When OSD is displayed, use the ◀ ▶ buttons to select any item in the main menu. While making a selection on a particular page, press the ▼ button to enter sub menu.
3. Use the ▲ ▼ buttons to select the desired item in the sub menu and adjust the settings by using the ◀ ▶ button.
4. Select the desired item in the sub menu and press the ENTER button to enter another sub menu. Press the MENU button to close the sub menu after adjustment.
5. After adjusting the settings, press the MENU or EXIT button go back to the main menu.
6. To exit, press the MENU button again. The OSD will be closed and the projector will automatically save the new settings.



❖ If no button operation is made for 30 seconds, the OSD will be closed automatically.



User Controls

Menu Tree

MAIN MENU		SUB MENU	SETTINGS
IMAGE	GENERAL	PICTURE MODE	PRESENTATION/HIGH-BRIGHT/VIDEO/MOVIE/ sRGB/ BLACKBOARD/ USER1/ USER2
		WALL COLOR	OFF/ RED/ GREEN/ BLUE/ CYAN/ MAGENTA/ YELLOW
		BRIGHTNESS	0~100
		CONTRAST	0~100
		SHARPNESS	0~31
		SATURATION	DEPEND ON SOURCE FORMAT
		HUE	DEPEND ON SOURCE FORMAT
	ADVANCED	GAMMA	FILM/ VIDEO/ GRAPHICS/ PC/ BLACKBOARD
		BrilliantColor™	0~10
		COLOR TEMP.	LOW/ MEDIUM/ HIGH
		DYNAMIC CONTRAST	ON/ OFF
		COLOR	RED GAIN/ GREEN GAIN/ BLUE GAIN/ CYAN GAIN/ MAGENTA GAIN/ YELLOW GAIN/ RED BIAS/ GREEN BIAS/ BLUE BIAS/ RESET
COLOR SPACE		AUTO/RGB/YUV	
SCREEN	GENERAL	ASPECT RATIO	4:3/16:9/16:10/15:9/5:4/NATIVE/ AUTO
		OVERSCAN	0%/5%/10%
		V KEYSTONE	-40~+40
	3D SETTINGS	3D	ON/OFF
		3D INVERT	ON/OFF
		3D STRUCTURE	AUTO/ FRAME PACKING/ TOP-AND-BOTTOM/ SIDE-BY-SIDE/ FRAME SEQUENTIAL
SETTINGS	GENERAL	LANGUAGE	ENGLISH / DEUTSCH / FRANÇAIS / ITALIANO / ESPAÑOL / SVENSKA / 日本語 / PORTUGUÊS / ČEŠTINA / MAGYAR / POLSKI / عربي / 简体中文 / 繁體中文 / NORSK / TÜRKÇE / РУССКИЙ / ΕΛΛΗΝΙΚΑ / INDONESIA / 한국어 / SUOMI / NEDERLANDS / DANSK / ROMÂNĂ / HRVATSKI / БЪЛГАРСКИ / ไทย / हिन्दी / ئۇيغۇر / TIẾNG VIỆT

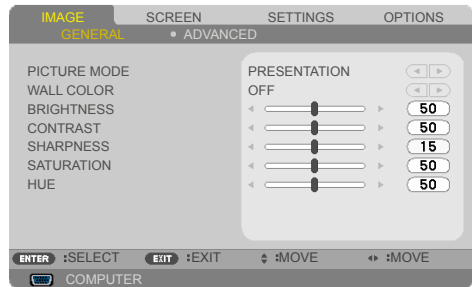
User Controls

MAIN MENU		SUB MENU	SETTINGS
SETTINGS	GENERAL	ORIENTATION	DESKTOP FRONT/ DESKTOP REAR/ CEILING FRONT/ CEILING REAR
		HDMI SETTINGS	VIDEO LEVEL (AUTO/NORMAL/ ENHANCED) / AUDIO SELECT (HDMI/ COMPUTER)
		MUTE	ON/OFF
		VOLUME	0~20
	SIGNAL	PHASE	DEPEND ON SOURCE FORMAT
		CLOCK	DEPEND ON SOURCE FORMAT
		H. POSITION	DEPEND ON SOURCE FORMAT
		V. POSITION	DEPEND ON SOURCE FORMAT
	ADVANCED	LOGO	ON/OFF
		CLOSED CAPTION	OFF/CC1/CC2/CC3/CC4/T1/T2/T3/T4
		SECURITY	SECURITY/SECURITY TIMER/ CHANGE PASSWORD
		TEST PATTERN	
	OPTIONS	GENERAL	INPUT SEARCH
INPUT			COMPUTER/HDMI/VIDEO
FAN MODE			AUTO/ HIGH ALTITUDE
INFORMATION HIDE			ON/OFF
ID DISPLAY			ON/OFF
BACKGROUND COLOR			BLACK/ BLUE
RESET			YES/ NO
LAMP SETTINGS		LAMPLIFEREMAINING	
		LAMP HOURS USED	
		ECO MODE	OFF/ECO
		LAMPLIFEREMINDER	ON/OFF
		CLEAR LAMP HOURS	YES/NO

User Controls

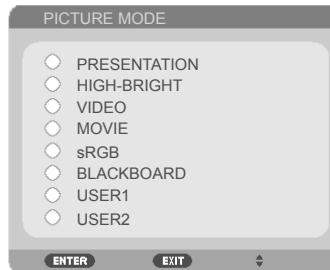
MAIN MENU		SUB MENU	SETTINGS
OPTIONS	INFORMATION	MODEL NO.	
		SERIAL NUMBER	
		SOURCE	
		RESOLUTION	
		SOFTWARE VERSION	
		CONTROL ID	ENABLE TO SELECT DEPENDS ON SETTING OF CONTROL ID OF "OPTIONS" "ADVANCED"
	ADVANCED	DIRECT POWER ON	ON/OFF
		AUTOPOWEROFF(MIN)	0~180
		OFF TIMER (MIN)	0~995
		CONTROLPANELLOCK	ON/OFF
		CONTROL ID	

IMAGE | GENERAL



PICTURE MODE

There are many factory presets optimized for various types of images. Use the ◀ or ▶ button to select the item.



- ▶ PRESENTATION: For computer or notebook.
- ▶ HIGH-BRIGHT: Maximum brightness from PC input.
- ▶ VIDEO: This mode is recommended for typical TV program viewing.
- ▶ MOVIE: For home theater.
- ▶ sRGB: Standardized accurate color.
- ▶ BLACKBOARD: This mode should be selected to achieve optimum color settings when projecting onto a blackboard (green).
- ▶ USER1/USER2: Memorize user's settings.

User Controls

WALL COLOR

Use this function to choose a proper color according to the wall. It will compensate the color deviation due to the wall color to show the correct image tone.



BRIGHTNESS

Adjust the brightness of the image.

- ▶ Press the ◀ button to darken image.
- ▶ Press the ▶ button to lighten the image.



CONTRAST

The contrast controls the degree of difference between the lightest and darkest parts of the picture. Adjusting the contrast changes the amount of black and white in the image.

- ▶ Press the ◀ button to decrease the contrast.
- ▶ Press the ▶ button to increase the contrast.



SHARPNESS

Adjust the sharpness of the image.

- ▶ Press the ◀ button to decrease the sharpness.
- ▶ Press the ▶ button to increase the sharpness.



SATURATION

Adjust a video image from black and white to fully saturated color.

- ▶ Press the ◀ button to decrease the amount of saturation in the image.
- ▶ Press the ▶ button to increase the amount of saturation in the image.



HUE

Adjust the color balance of red and green.

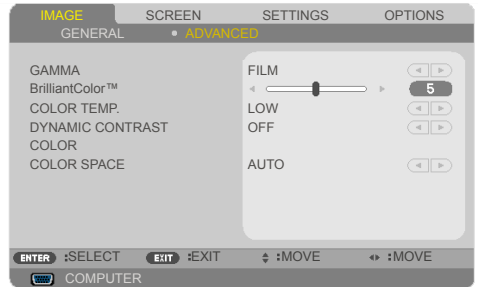
- ▶ Press the ◀ button to increase the amount of green in the image.
- ▶ Press the ▶ button to increase the amount of red in the image.



Input signal	BRIGHTNESS	CONTRAST	SHARPNESS	SATURATION	HUE
COMPUTER/ HDMI (RGB)	YES	YES	YES	NO	NO
COMPUTER/ HDMI (COMPONENT)	YES	YES	YES	YES	YES
VIDEO	YES	YES	YES	YES	YES

❖ Yes=Adjustable, No=Not adjustable

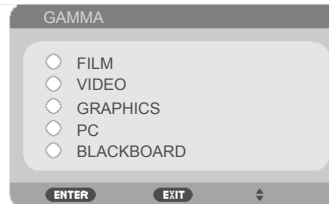
IMAGE | ADVANCED



GAMMA

This allows you to choose a gamma table that has been fine-tuned to bring out the best image quality for the input.

- ▶ **FILM:** for home theater.
- ▶ **VIDEO:** for video or TV source.
- ▶ **GRAPHICS:** for image source.
- ▶ **PC:** for PC or computer source.
- ▶ **BLACKBOARD:** for displaying on the blackboard.



BrilliantColor™

This adjustable item utilizes a new color-processing algorithm and system level enhancements to enable higher brightness while providing true, more vibrant colors. The range is from “0” to “10”. If you prefer a stronger enhanced image, adjust toward the maximum setting. For a smoother, more natural image, adjust toward the minimum setting.



❖ The COLOR TEMP. is not available when “HIGH-BRIGHT” or “sRGB” is selected for “PICTURE MODE”.

COLOR TEMP.

Adjust the color temperature. At higher temperature, the screen looks colder; at lower temperature, the screen looks warmer.



DYNAMIC CONTRAST

Turning this item on allows the contrast ratio to be adjusted to the proper level.



User Controls

COLOR

Press ENTER into the next menu as below and then use the ▲ or ▼ button to select item.



▶ RED GAIN



▶ GREEN GAIN



▶ BLUE GAIN



▶ CYAN GAIN



▶ MAGENTA GAIN



▶ YELLOW GAIN



▶ RED BIAS



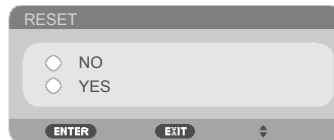
▶ GREEN BIAS



▶ BLUE BIAS



- ▶ Use the ◀ or ▶ button to adjust the setting.
- ▶ RESET: Choose “YES” to return the factory default settings for color adjustments.

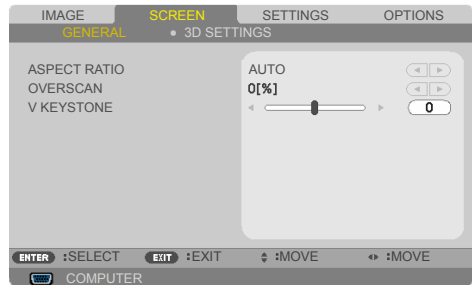


COLOR SPACE

Select an appropriate color matrix type from AUTO, RGB, or YUV.



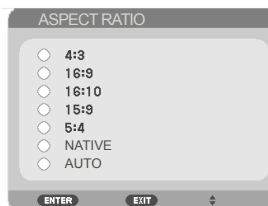
SCREEN | GENERAL



ASPECT RATIO

Use this function to choose your desired aspect ratio.

- ▶ 4:3: This format is for 4×3 input sources.
- ▶ 16:9: This format is for 16×9 input sources, like HDTV and DVD enhanced for Wide screen TV.
- ▶ 16:10: This format is for 16×10 input sources, like widescreen laptops.
- ▶ 15:9: This format is for 15×9 input sources.
- ▶ 5:4: This format is for 5×4 input sources.
- ▶ NATIVE: This format displays the original image without any scaling.
- ▶ AUTO: Automatically selects the appropriate display format.



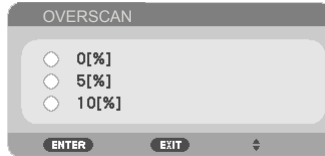
NOTE



❖ Each I/O has different setting of "OVERSCAN".

OVERSCAN

Overscan function removes the noise in a video image. Overscan the image to remove video encoding noise on the edge of video source.



NOTE



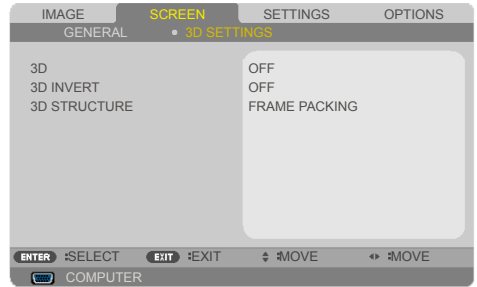
❖ Please see more information on Quick Keys on page 13.

V KEYSTONE

Press the ◀ or ▶ button to adjust image distortion vertically. If the image looks trapezoidal, this option can help make the image rectangular.



SCREEN | 3D SETTINGS



3D

❖ “3D INVERT” and “3D STRUCTURE” only available when 3D is enabled.

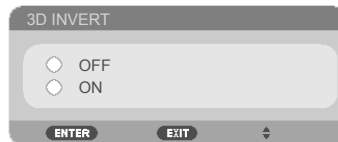
❖ Compatible 3D source, 3D content and active shutter glasses are required for 3D viewing.

Choose “ON” to turn this item on for 3D images. (default: OFF)



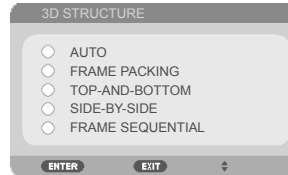
3D INVERT

- ▶ Choose “ON” to invert left and right frame contents.
- ▶ Choose “OFF” for default frame contents.



3D STRUCTURE

Adjust the 3D format to display 3D content correctly.



TIP: 3D supported signal

- For PC Signal :
800x600@60/120Hz
1024x768@60/120Hz
1280x720@60Hz
- For Video Signal :
480i@60Hz
- For HDMI Signal :
720p (Frame Packing) 1280 x 720@50/60/59.94
1080p (Frame Packing) 1920 x 1080@23.98/24
720p (Top and Bottom) 1280 x 720@50/60/59.94* (*Select manually)
1080p (Top and Bottom) 1920 x 1080@23.98/24
1080i (Side by Side (Half)) 1920 x 1080@50/60/59.94* (*Select manually)

SETTINGS | GENERAL



LANGUAGE

Choose the multilingual OSD menu. Press the ◀ or ▶ button into the sub menu and then use the ▲ or ▼ button to select your preferred language. Press ENTER to finalize the selection.



❖ DESKTOP REAR and CEILING REAR are to be used with a translucent screen.

ORIENTATION

▶ DESKTOP FRONT:

When selected, the image is projected straight on the screen.

▶ DESKTOP REAR:

When selected, the image will appear reversed.

▶ CEILING FRONT:

When selected, the image will turn upside down.

▶ CEILING REAR

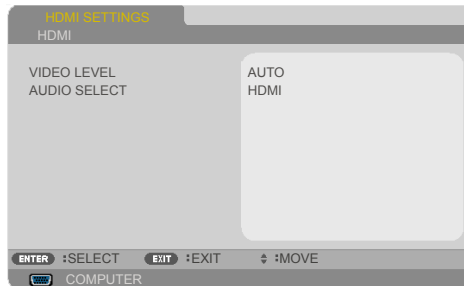
This is the default selection. The image will appear reversed in upside down position.



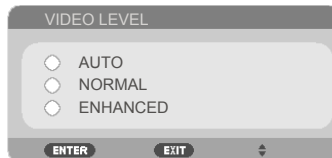
❖
“HDMI SETTINGS” is only supported under HDMI source.

HDMI SETTINGS

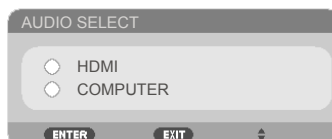
Use this feature to set HDMI.



- ▶ **VIDEO LEVEL:** Select “AUTO” to automatically detect video level. If automatic detection may not work well, select “NORMAL” to disable the “ENHANCED” feature of your HDMI equipment or select “ENHANCED” to improve image contrast and increase detail in the dark areas.



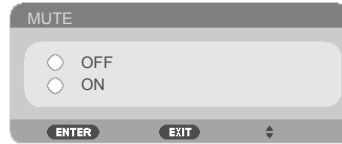
- ▶ **AUDIO SELECT:** Use this function to select the audio source from “HDMI” or “COMPUTER”.



User Controls

MUTE

- ▶ Choose “ON” to turn mute on.
- ▶ Choose “OFF” to turn mute off.



VOLUME

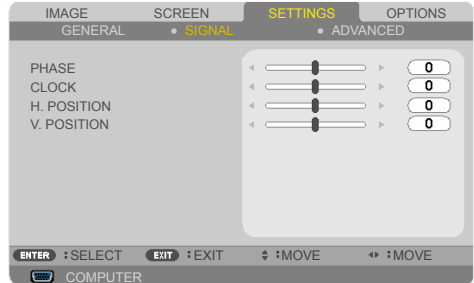
- ▶ Press the ◀ button to decrease the volume.
- ▶ Press the ▶ button to increase the volume.





❖ “SIGNAL” is only supported in Analog VGA (RGB) signal.

SETTINGS | SIGNAL



PHASE

Synchronize the signal timing of the display with the graphic card. If the image appears to be unstable or flickers, use this function to correct it.



CLOCK

Change the display data frequency to match the frequency of your computer's graphic card. Use this function only if the image appears to flicker vertically.



H. POSITION

- ▶ Press the ◀ button to move the image left.
- ▶ Press the ▶ button to move the image right.



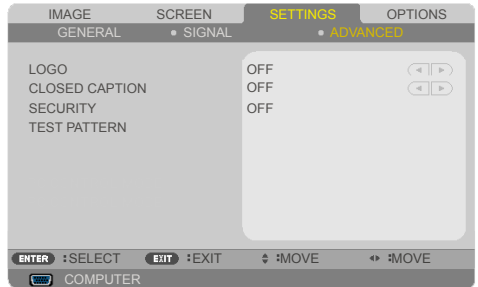
User Controls

V. POSITION

- ▶ Press the ◀ button to move the image down.
- ▶ Press the ▶ button to move the image up.



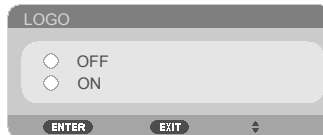
SETTINGS | ADVANCED



LOGO

Use this function to display the startup screen (NEC logo).

- ▶ ON: Displays the NEC logo.
- ▶ OFF: Not display the NEC logo.



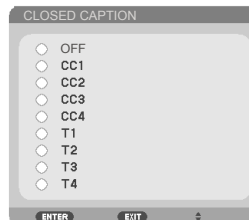
❖ The closed caption is not available under the following conditions:

- when messages or menus are displayed.
- when an image is frozen.
- when [V KEYSTONE] setting is not zero or [ASPECT RATIO] setting is not [AUTO] or [4:3].

❖ The projector does not support optional extended characters for closed captioning.

CLOSED CAPTION

Use this function to enable closed caption and activate the closed caption menu. Select an appropriate closed captions option: OFF, CC1, CC2, CC3, CC4, T1, T2, T3, or T4.



SECURITY

- ▶ OFF: Choose "OFF" to be able to switch on the projector without password verification.
- ▶ ON: Choose "ON" to use security verification when turning on the projector.



First Time:

1. The default password : ▲▶▼◀
2. Use the remote to enter your password, and then press ENTER to confirm your password.



❖ The available test pattern is GRID.

TEST PATTERN

Press ENTER to make the selection. Then press MENU or EXIT to close the sub menu.

SETTINGS | ADVANCED | SECURITY



SECURITY TIMER

Use this function to set how long (MONTH/DAY/HOUR) the projector can be used. Once this time has elapsed you will be requested to enter your password again.



The "SECURITY TIMER" will restart to count down when the projector is turned off and then turned back on.



❖ The default password is ▲▶▼◀ (first time).

CHANGE PASSWORD

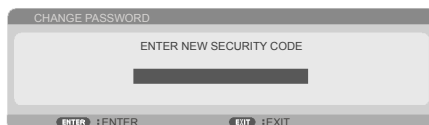
1. Press ENTER to enter SECURITY KEYWORD setting.
2. The password has to be combination of ◀, ▶, ▲, ▼ direction keys and must include 4 to 10 characters.

▶ Current password



3. Use number buttons on the remote control, to enter your **old** password and then press ENTER to confirm your password.

▶ Input new password



User Controls

4. Use direction keys, to enter your **new** password and then press ENTER to confirm your password.

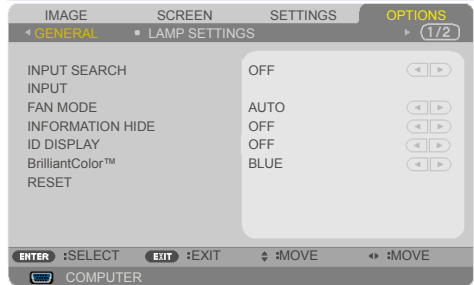
- ▶ Confirm new password



5. Enter the new password again and press ENTER to confirm.

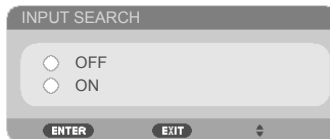
- ▶ If the incorrect password is entered 3 times, the projector will automatically shut down. (When turn on the projector.)
- ▶ If you have forgotten your password, please contact your local office for support.

OPTIONS | GENERAL



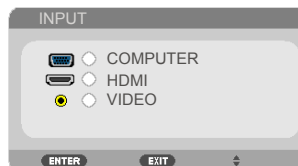
INPUT SEARCH

- ▶ ON: The projector will search for other signals if the current input signal is lost.
- ▶ OFF: The projector will only search current input connection.



INPUT

Use this option to enable / disable input sources. Press ENTER to enter the sub menu and select which sources you require. Press the ENTER button to finalize the selection. The projector will not search for inputs that are not selected.



User Controls

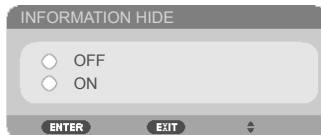
FAN MODE

- ▶ **AUTO:** The built-in fans automatically run at a variable speed according to the internal temperature.
- ▶ **HIGH ALTITUDE:** The built-in fans run at high speed. Select this option when using the projector at altitudes approximately 2500 feet/760 meters or higher.



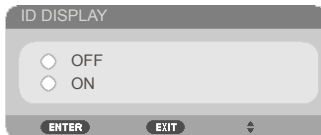
INFORMATION HIDE

- ▶ **ON:** Choose "ON" to hide the info message.
- ▶ **OFF:** Choose "OFF" to show the "SEARCHING" message.



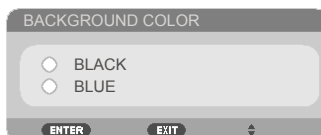
ID DISPLAY

Use this feature to display the ID number which is displayed when the "ID SET" button is pressed on the remote control.



BACKGROUND COLOR

Use this feature to display a "BLACK" or "BLUE" screen when no signal is available.





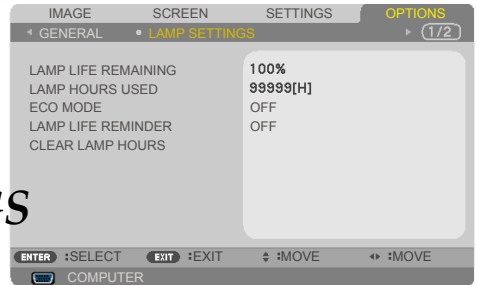
❖ (*) Except
“LANGUAGE”,
“LOGO”,
“SECURITY”,
“FAN MODE”,
“BACKGROUNDCOLOR”,
“LAMPLIFEREMAINING”,
and
“LAMPHOURSUSED”.

RESET

Choose “YES” to return the display parameters on all menus to the factory default settings. (*)



OPTIONS | LAMP SETTINGS



LAMP LIFE REMAINING

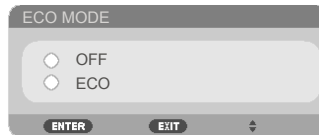
Showing the Lamp life.

LAMP HOURS USED

Display the projection time.

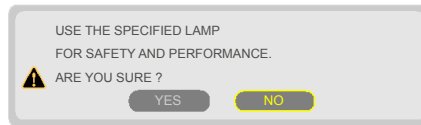
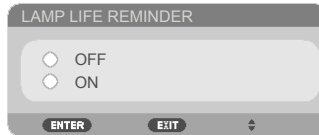
ECO MODE

Choose "ECO" to dim the projector lamp which will lower power consumption and extend the lamp life. Choose "OFF" to return to normal mode.



LAMP LIFE REMINDER

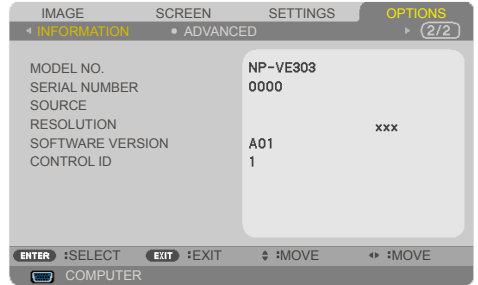
Choose this function to show or to hide the warning message when the changing lamp message is displayed. The message will appear when the lamp has reached the end of its life.



CLEAR LAMP HOURS

Reset the lamp hour counter after replacing the lamp.

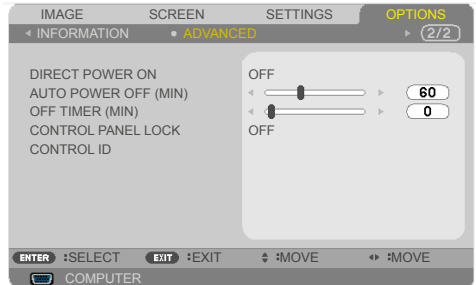
OPTIONS | INFORMATION




INFORMATION

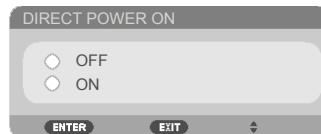
To display the projector information for model no., serial number, source, resolution, software version, and control ID on the screen.

OPTIONS | ADVANCED



DIRECT POWER ON

Choose "ON" to activate Direct Power mode. The projector will automatically power on when AC power is supplied, without pressing the  button on the projector control panel or the "POWER ON" button on the remote control.



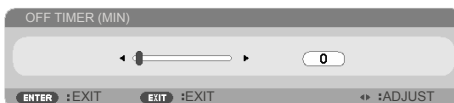
AUTO POWER OFF (MIN)

Sets the countdown timer interval. The countdown timer will start, when there is no signal being sent to the projector. The projector will automatically power off when the countdown has finished (in minutes).



OFF TIMER (MIN)

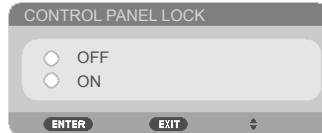
Sets the countdown timer interval. The countdown timer will start, with or without a signal being sent to the projector. The projector will automatically power off when the countdown has finished (in minutes).



User Controls

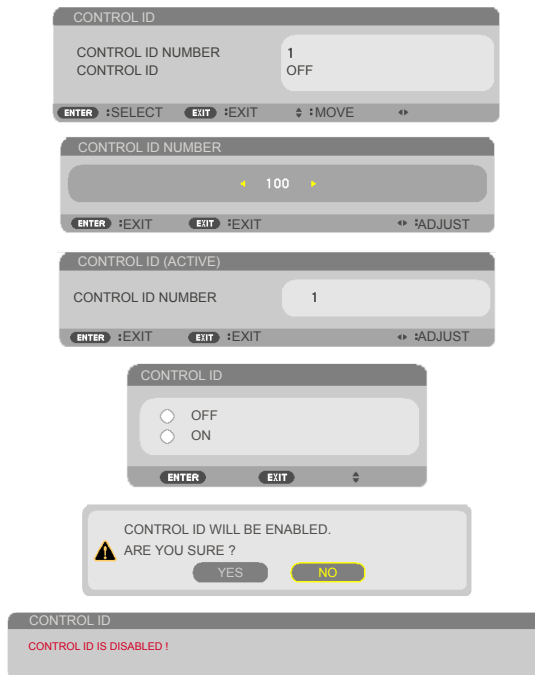
CONTROL PANEL LOCK

When the keypad lock function is "ON", the control panel will be locked however, the projector can be operated by the remote control. By selecting "OFF", you will be able to reuse the control panel. Press and hold the EXIT button on the projector cabinet for about 10 seconds to turn off "CONTROL PANEL LOCK".



CONTROL ID

Use this feature to display the ID number of the projector when the "ID SET" button is pressed on the remote control.



Troubleshooting

If you experience trouble with the projector, refer to the following information. If the problem persists, please contact your local dealer or service center.

Problem: No image appears on screen

- ▶ Ensure all the cables and power connections are correctly and securely connected as described in the “Installation” section.
- ▶ Ensure the pins of connectors are not crooked or broken.
- ▶ Check if the projection lamp has been securely installed. Please refer to the “Replacing the lamp” section.
- ▶ Make sure the projector is switched on.
- ▶ Ensure that the “AV-MUTE” feature is not turned on.

Problem: Partial, scrolling or incorrectly displayed image

- ▶ Press “AUTO ADJ.” on the remote control.
- ▶ If you are using a PC:

For Windows Vista:

1. From the “My Computer” icon, open the “Control Panel” folder, and double click the “Appearance and Personalization”.
2. Select “Personalization”.
3. Click “Adjust screen resolution” to display “Display Settings”. Click on the “Advanced Settings”.

For Windows 7:

1. From “Start” menu, open “Control Panel”.
2. From drop-down menu select “Display”.
3. Click “Adjust resolution”.

If the projector is still not projecting the whole image, you will also need to change the monitor display you are using. Refer to the following steps.

4. Verify the resolution setting is less than or equal to 1280 × 1024 resolution.

5. Select the "Change" under the "Monitor" tab .
 6. Click on "Show all devices". Next, select "Standard monitor types" under the SP box; choose the resolution mode you need under the "Models" box.
- ▶ If you are using a Notebook:
 1. First, follow the steps above to adjust resolution of the computer.
 2. Press the toggle output settings. A combination of function keys will enable/disable the external display. Usually, the combination of the "Fn" key along with one of the 12 function keys gets the external display to come on or off. For example, NEC notebook PCs use Fn + F3, while Dell notebook PCs use Fn + F8 key combination to toggle through external display selection.
 - ▶ If you experience difficulty changing resolutions or your monitor freezes, restart all equipment including the projector.

Problem: The screen of the Notebook or PowerBook computer is not displaying a presentation

▶ If you are using a Notebook PC:

Some Notebook PCs may deactivate their own screens when a second display device is in use. Each has a different way to be reactivated. Refer to your computer's documentation for detailed information.

Problem: Image is unstable or flickering

- ▶ Adjust the "PHASE" to correct it. Refer to the "SETTINGS" section for more information.
- ▶ Change the monitor color setting from your computer.

Problem: Image has vertical flickering bar

- ▶ Use "CLOCK" to make an adjustment.
- ▶ Check and reconfigure the display mode of your graphic card to make it compatible with the product.

Problem: Image is out of focus

- ▶ Adjust the focus ring on the projector lens.
- ▶ Make sure the projection screen is between the required distance from the projector. Please see pages 31-32).

Problem: The image is stretched when displaying 16:9 DVD

The projector automatically detects 16:9 DVD and adjusts the aspect ratio by digitizing to full screen with 4:3 default setting.

If the image is still stretched, you will also need to adjust the aspect ratio by referring to the following:

- ▶ Please select 4:3 aspect ratio type on your DVD player if you are playing a 16:9 DVD.
- ▶ If you can't select 4:3 aspect ratio type on your DVD player, please select 4:3 aspect ratio in the on-screen menu.

Problem: Image is reversed

- ▶ Select "SETTINGS | GENERAL-->ORIENTATION" from the OSD and adjust the projection direction.

Problem: Lamp burns out or makes a popping sound

- ▶ When the lamp reaches its end of life, it will burn out and may make a loud popping sound. If this happens, the projector will not turn on until the lamp module has been replaced. To replace the lamp, follow the procedures in the "Replacing the Lamp".

Appendices

Problem: LED Indicator message

POWER LED Indicator

Indicator Condition			Projector Condition	Note
Off			The main power is off.	Without connecting power cable.
Blinking light	GREEN	0.5sec ON / 0.5sec OFF	The projector is getting ready to turn on.	--
		2.5sec ON / 0.5sec OFF	Off Timer is working.	--
	ORANGE	0.5sec ON / 0.5sec OFF	Cooling	--
Steady light	GREEN		Power on mode	--
	RED		Normal Standby	Connecting power cable

STATUS LED Indicator

Indicator Condition			Projector Condition	Note
Off			Normal Condition	--
Blinking light	RED	2cycle (0.5sec ON / 0.5sec OFF)	Temperature error	--
		3cycle (0.5sec ON / 0.5sec OFF)	Power error	Power unit is not working properly. Contact your dealer.
		4cycle (0.5sec ON / 0.5sec OFF)	Fan error	--
		6cycle (0.5sec ON / 0.5sec OFF)	Lamp error	--
	GREEN	0.5sec ON / 0.5sec OFF	Re-firing the lamp (The projector is cooling down)	--
Steady light	ORANGE		Control Panel Lock is working	You have pressed cabinet button when Control Panel Lock is on.
			CONTROL ID error	Remote control ID and projector ID are not matched.

LAMP LED Indicator

Indicator Condition			Projector Condition	Note
Off			Normal Condition	--
Blinking light	RED	0.5sec ON / 0.5sec OFF	Lamp has reached its end of life.	--
Steady light	RED		Lamp has been used beyond its limit.	The projector will not turn on until the lamp is replaced.
	GREEN		[ECO MODE] is set to [ECO]	

Problem: Message Reminders

- ▶ Over temperature - the projector has exceeded its recommended operating temperature and must be allowed to cool down before it may be used.

WARNING! TEMPERATURE TOO HIGH

1. MAKE SURE AIR IN AND OUTLETS ARE NOT BLOCKED.
2. MAKE SURE THE ENVIRONMENT TEMPERATURE IS UNDER 40 DEGREE C

- ▶ Replacing the lamp - the lamp is about to reach its maximum lifetime. Prepare to replace it soon.

WARNING! LAMP

LAMP WARNING
LAMP LIFE IS ABOVE LIMIT TIME. LAMP OFF!

WARNING! LAMP

LAMP WARNING
LAMP LIFE EXCEEDED.

NOTE: When you continue to use the projector for another 100 hours after the lamp has reached the end of its life, the projector cannot turn on.

If this happens, after replacing the lamp, connect the power cord and then press and hold the HELP button on the remote control at least 10 seconds. This will allow you to turn on the projector. Clear the lamp hours by selecting "OPTIONS" -> "LAMP SETTINGS" -> "CLEAR LAMP HOURS" from the menu.

- ▶ Fan failed - the system fan is not working.

WARNING! FAN LOCKED

THE PROJECTOR WILL SWITCH OFF AUTOMATICALLY.

Replacing the lamp

Optional lamp (NP40LP)

The projectors will detect the lamp life at 4500 hours in ECO Mode Off (6000 hours in ECO Mode). When the POWER LED indicator flashes red and the message below displays on screen, the projector has detected that the lamp is approaching its end of life. Please see page 68. It will show you a warning message:



Warning: To avoid burns, allow the projector to cool for at least 60 minutes before you replace the lamp!

WARNING! LAMP

LAMP WARNING
LAMP LIFE IS ABOVE LIMIT TIME. LAMP OFF!

WARNING! LAMP

LAMP WARNING
LAMP LIFE EXCEEDED.

When you see this message, change the lamp as soon as possible. Make sure the projector has been cooled down for at least 60 minutes before changing the lamp.

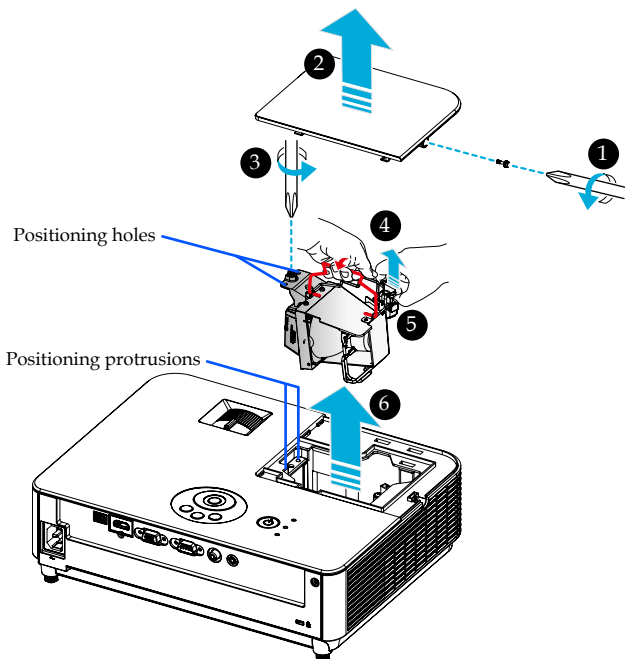
Appendices




Warning: To reduce the risk of personal injury, do not drop the lamp module or touch the lamp bulb. The bulb may shatter and cause injury if it is dropped.



- Do not break the glass on the lamp module. Keep finger prints off the glass surface on the lamp module. Leaving finger prints on the glass surface might cause an unwanted shadow and poor picture quality.
- Be sure to tighten the screws after replacing the lamp module.



Lamp Replacing Procedure:

1. Switch off the power to the projector by pressing the "POWER OFF" button on the remote control or the  button on the control panel.
2. Allow the projector to cool down at least 60 minutes.
3. Disconnect the power cord.
4. Use a screwdriver to loosen the screw on the lamp cover. ❶
5. Slide and remove the cover. ❷
6. Loosen the screw on the lamp module. ❸
7. Lift the handle. ❹
8. Pinch the arrow marked positions on the connector housing and pull the housing upward for removing the connector. ❺
9. Pull out the lamp module. ❻
10. Install the new lamp module by reversing the previous steps.
11. After replacing the lamp, turn on the power, and select the MENU button -> OPTIONS | LAMP SETTINGS -> CLEAR LAMP HOURS to reset the lamp usage hours. Please see page 61.

NOTE

❖ Make sure to align the positioning holes over the positioning protrusions for installing the lamp module.

Cleaning procedure for the lens

If the projection lens is dusty or blemished, please clean the lens as following procedure:

1. Turn off the projector and cool projector down for a while.
2. Unplug the power cord from outlet.
3. Blow the dust by blower for cameras which you could buy from camera shops. Wipe the lens gently using a cleaning cloth.

 **CAUTION:**

- Always wipe the lens with a cleaning cloth.
- Please do not wipe the lens hard because that may cause serious damage on the lens surface.
- Wiping might scratch the lens. Optical performance of the projector will thus be impacted if the lens is scratched after wiping. Optical performance impact will be dependent on the scratch condition on it.
- Do not use liquid cleaners or chemicals on the cloth because it may contaminate the cloth and cause serious damage on the surface of lens.
- Do not use a spray containing flammable gas to get rid of accumulated dust on the lens. It may cause of fire.

Specifications

Optical		NP-VE303	NP-VE303X
Projection System		0.55" SVGA DMD	0.55" XGA DMD
Resolution (pixels) *1		800x600 (SVGA)	1024x768 (XGA)
Lens		Manual zoom and manual focus	
		F=2.41 - 2.55 mm	
		f=21.8 - 24.0 mm @ 60"	
Lamp		195W (160W in ECO mode)	
Light Output *2 *3		3000lm	
		Approx. 85% in ECO mode	
Contrast Ratio *3 (with DYNAMIC CONTRAST ON)		10000:1 (typical)	
Image Size (Diagonal)		30 to 300 inch / 76.2 to 762.0 cm	
Projection Distance	wide	47" to 468" (1.19 to 11.9 m)	
	tele	52" to 516" (1.32 to 13.1 m)	
Projection Angle	wide	14.0°	
	tele	12.8°	

*1 Effective pixels are more than 99.99%.

*2 This is the light output value (lumens) when [PICTURE MODE] is set to [HIGH-BRIGHT] in the menu.

If any other mode is selected as [PICTURE MODE], the light output value may drop slightly.

*3 Compliance with ISO21118-2012

Appendices

Electrical		NP-VE303	NP-VE303X
Inputs		1 x VGA and Y/Pb/Pr, 1 x HDMI *4 (Standard HDMI connector), 1 x Audio (Stereo mini jack), 1 x Composite Video (RCA (yellow))	
PC Control		1 x PC Control Port (D-Sub 9 Pin)	
Service Port		Mini USB type B (for FW download)	
Color Reproduction		1.07 billion colors simultaneously with 10-bit signal processing	
Compatible Signals *5	Analog	VGA/SVGA/XGA/XGA+/SXGA/Quad-VGA/SXGA+/UXGA/PowerBook G4/iMac DV (G3)/WSVGA/WXGA/WXGA+/WSXGA/WUXGA/480i/480p/576i/576p/720p/1080i/1080p	
	HDMI	VGA/SVGA/XGA/XGA+/SXGA/Quad-VGA/SXGA+/UXGA/PowerBook G4/iMac DV (G3)/WSVGA/WXGA/WXGA+/WSXGA/WUXGA/480i/480p/576i/576p/720p/1080i/1080p	
Horizontal Resolution		540 TV lines: NTSC/NTSC4.43/PAL/PAL-M/PAL-N/PAL60	
		300 TV lines: SECAM	
Scan Rate		Hsync Frequency: 24KHz~102KHz	
		Vsync Frequency: 48Hz~120Hz	
Sync Compatibility		Separate Sync	
Built-in Speaker		2W monaural	
Power Requirement		100 - 240V AC 50/60Hz	
Input Current		2.5-1.1 A	
Power Consumption (Typical value)			
Eco Mode OFF		237W(*6)/232W(*7)	
Eco Mode		198W(*6)/192W(*7)	
Standby		0.23W(*6)/0.33W(*7)	

*4 HDMI® (Deep Color, Lip Sync) with HDCP

What is HDCP/HDCP technology?

HDCP is an acronym for High-bandwidth Digital Content Protection. High bandwidth Digital Content Protection (HDCP) is a system for preventing illegal copying of video data sent over a High-Definition Multimedia Interface (HDMI).

If you are unable to view material via the HDMI input, this does not necessarily mean the projector is not functioning properly. With the implementation of HDCP, there may be cases in which certain content is protected with HDCP and might not be displayed due to the decision/intention of the HDCP community (Digital Content Protection, LLC).

Video: Deep Color; 8/10/12-bit, LipSync

Appendices

*5 NP-VE303:


An image with higher or lower resolution than the projector's native resolution (800 × 600) will be displayed with scaling technology.

NP-VE303X:

An image with higher or lower resolution than the projector's native resolution (1024 × 768) will be displayed with scaling technology.

*6 100-130VAC

*7 200V-240VAC

Mechanical	NP-VE303	NP-VE303X
Installation Orientation	Desktop/Front, Desktop/Rear, Ceiling/Front, Ceiling/Rear	
Dimensions	12.8" (W) x 3.5" (H) X 9.8" (D) / 324 mm (W) x 88 mm (H) x 250 mm (D) (not including protrusions) 12.8" (W) x 4.0" (H) x 9.8" (D) / 324 mm (W) x 101 mm (H) x 250 mm (D) (with protrusions)	
Weight	2.6kg / 5.6lbs	
Environmental Conditions *8	Operational Temperatures: 41° to 104° F (5°C to 40°C) 20% to 80% humidity (non-condensing)	
	Storage Temperatures: 14° to 122° F (-10°C to 50°C) Max. 80% humidity (non-condensing)	
Regulations	UL/C-UL Approved (UL 60950-1, CSA 60950-1) Meets DOC Canada Class B requirements Meets FCC Class B requirements Meets AS/NZS CISPR.22 Class B Meets EMC Directive (EN55022, EN55024, EN61000-3-2, EN61000-3-3) Meets Low Voltage Directive (EN60950-1, TÜV Approved)	
		

*8 Operational temperatures

- 0 to 2500 feet/760 m in the range of 41° to 104°F (5° to 40°C)
- 2500 feet/760m to 5000 feet/1500 m in the range of 41° to 95°F (5° to 35°C)
- 5000 feet/1500 m to 10000 feet/3000 m in the range of 41° to 86°F (5° to 30°C)
- Set [FAN MODE] to [HIGH ALTITUDE] when using the projector at altitudes approx. 2500 feet/760 m or higher.

Compatibility Modes

▶ VGA Analog

(1) VGA Analog - PC Signal

Modes	Resolution (dots)	V.Frequency [Hz]	H.Frequency [KHz]
VGA	640x480	60	31.47
VGA	640x480	72	37.86
VGA	640x480	75	37.5
VGA	640x480	85	43.27
SVGA	800x600	56	35.2
SVGA	800x600	60	37.88
SVGA	800x600	72	48.08
SVGA	800x600	75	46.88
SVGA	800x600	85	53.67
XGA	1024x768	60	48.36
XGA	1024x768	70	56.48
XGA	1024x768	75	60.02
XGA	1024x768	85	68.67
XGA+	1152x864	75	67.5
SXGA	1280x1024	60	63.98
SXGA	1280x1024	72	77.9
SXGA	1280x1024	75	79.98
SXGA	1280x1024	85	91.15
Quad VGA	1280x960	60	60
Quad VGA	1280x960	75	75
SXGA+	1400x1050	60	65.32
UXGA	1600x1200	60	75
Mac OS X	640x480	60	31.5
Mac OS X	640x480	66.6(67)	35
Mac OS X	800x600	60	37.88
Mac OS X	1024x768	60	48.36
Mac OS X	1152x870	75	68.68
Mac OS X	1280x960	75	75.2

(2) VGA Analog - Extended Wide timing

Modes	Resolution (dots)	V.Frequency [Hz]	H.Frequency [KHz]
HD	1280x720	60	44.8
WXGA	1280x768	60	47.78
WXGA	1280x768	75	60.29
WXGA	1280x768	85	68.63
WXGA	1280x800	60	49.6
WXGA	1366x768	60	47.71
WXGA+	1440x900	60	55.9
WSXGA	1680x1050	60	65.3
Full HD	1920x1080	60	67.5
WUXGA	1920x1200	60	74.0

(3) VGA Analog - Component Signal

Modes	Resolution (dots)	V.Frequency [Hz]	H.Frequency [KHz]
480i	720x480	59.94(29.97)	27
480p	720x480	59.94	31.47
576i	720x576	50(25)	27
576p	720x576	50	31.25
720p	1280x720	60	45
720p	1280x720	50	37.5
1080i	1920x1080	60(30)	33.75
1080i	1920x1080	50(25)	33.75
1080p	1920x1080	60	67.5
1080p	1920x1080	50	56.25

▶ HDMI Digital

Signal	Resolution (dots)	Aspect Ratio	Refresh Rate [Hz]
VGA	640x480	4:3	59.94/60
SVGA	800x600 *2	4:3	60
XGA	1024x768 *1	4:3	60
XGA	1280x768	15:9	60
WXGA	1280x800	16:10	60
WXGA	1366x768 *3	16:9	60
SXGA	1280x1024	5:4	60
SXGA+	1400x1050	4:3	60
WXGA+	1440x900	16:10	60
WXGA++	1600x900	16:9	60
WSXGA+	1680x1050	16:10	60
UXGA	1600x1200	4:3	60
Full HD	1920x1080	16:9	60
HDTV (1080p)	1920x1080	16:9	23.98/24/50/59.94/60
HDTV(1080i)	1920x1080	16:9	50/59.94/60
HDTV (720p)	1280x720	16:9	50/59.94/60
SDTV (480p)	720x480	4:3/16:9	59.94/60
SDTV (576p)	720x576	4:3/16:9	50
SDTV (480i)	720(1440)x480	4:3/16:9	59.94/60
SDTV (576i)	720(1440)x576	4:3/16:9	50

*1 XGA Model Real Resolution

*2 SVGA Model Real Resolution

*3 The projector may fail to display these signals correctly when [AUTO] is selected for [ASPECT RATIO] in the on-screen menu.

The factory default is [AUTO] for [ASPECT RATIO]. To display these signals, select [16:9] for [ASPECT RATIO].

▶ HDMI - 3D Timing

Signal	Resolution (dots)	Aspect Ratio	Refresh Rate [Hz]
For PC Signal			
SVGA	800x600 *1	4:3	60/120 *2
XGA	1024x768 *1	4:3	60/120 *2
1280x720	1280x720	16:9	60/120 RB *2
For Video Signal			
SDTV (480i)	720x480	4:3/16:9	60
For HDMI 3D			
720p (Frame Packing)	1280x720	16:9	50/60/59.94
1080p (Frame Packing)	1920x1080	16:9	23.98/24
1080i (Side by Side (Half))	1920x1080	16:9	50/60/59.94
1080P (Side by Side (Half))	1920x1080	16:9	50/60/59.94 *3
720p (Top and Bottom)	1280x720	16:9	50/60/59.94
1080p (Top and Bottom)	1920x1080	16:9	23.98/24

*1 1024x768 for XGA Model Real Resolution / 800x600 for SVGA Model Real Resolution

*2 The 120 Hz signals are support frame sequential format only.

*3 Select manually.

Ceiling Mount Installation

1. To refuse the projector from damage, please use the ceiling mount kit for ceiling mount installation.
2. If you buy a ceiling mount from another company, please be sure to use the screw in correct size. Screw size is vary depending on the thickness of the mounting plate.



Please note that damage resulting from incorrect installation will invalidate the warranty.



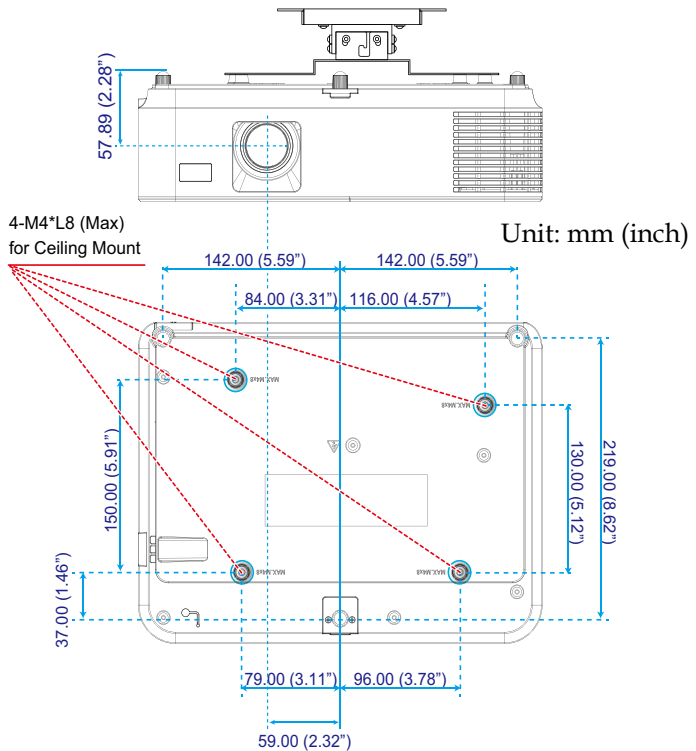
Warning:

1. Be sure to keep at least 10 cm gap between the ceiling and the bottom of the projector.
2. Avoid installing the projector near a heat source.

► Screw type: M4*4

► Maximum screw length: 8mm

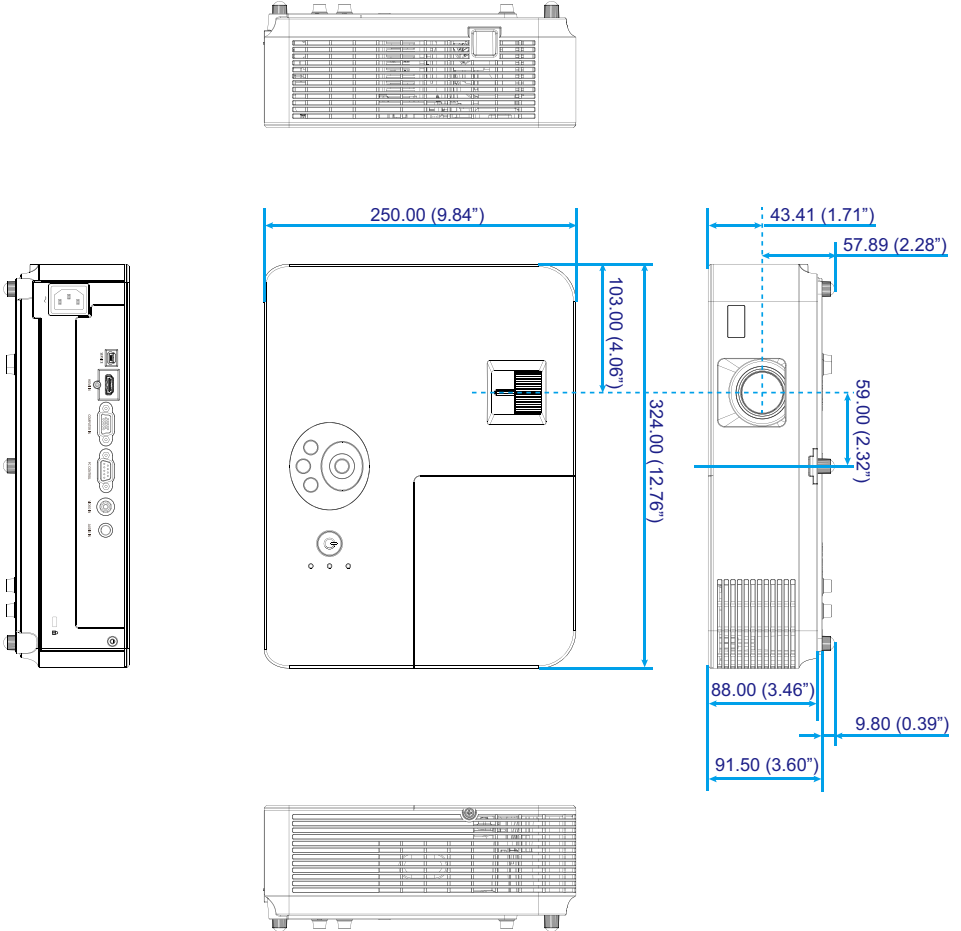
► Minimum screw length: 6mm



Appendices

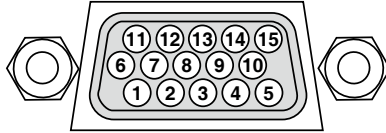
Cabinet Dimensions

Unit: mm (inch)



Pin Assignments of D-Sub COMPUTER Input Connector

Mini D-Sub 15 Pin Connector



Signal Level

Video signal : 0.7Vp-p (Analog)

Sync signal : TTL level

Pin No.	RGB Signal (Analog)	YCbCr Signal
1	Red	Cr
2	Green	Y
3	Blue	Cb
4	Ground	
5	Ground	
6	Red Ground	Cr Ground
7	Green Gro	Y Ground
8	Blue Ground	Cb Ground
9	No Connection	
10	Sync Signal Ground	
11	No Connection	
12	Bi-directional DATA (SDA)	
13	Horizontal Sync or Composite Sync	
14	Vertical Sync	
15	Data Clock	



❖ Pin No. 12 and 15 are required for DDC/CI.

PC Control Codes and Cable Connection

PC Control Codes

Function	Code Data							
POWER ON	02H	00H	00H	00H	00H	02H		
POWER OFF	02H	01H	00H	00H	00H	03H		
INPUT SELECT COMPUTER	02H	03H	00H	00H	02H	01H	01H	09H
INPUT SELECT HDMI	02H	03H	00H	00H	02H	01H	A1H	A9H
INPUT SELECT VIDEO	02H	03H	00H	00H	02H	01H	06H	0EH
PICTURE MUTE ON	02H	10H	00H	00H	00H	12H		
PICTURE MUTE OFF	02H	11H	00H	00H	00H	13H		
SOUND MUTE ON	02H	12H	00H	00H	00H	14H		
SOUND MUTE OFF	02H	13H	00H	00H	00H	15H		

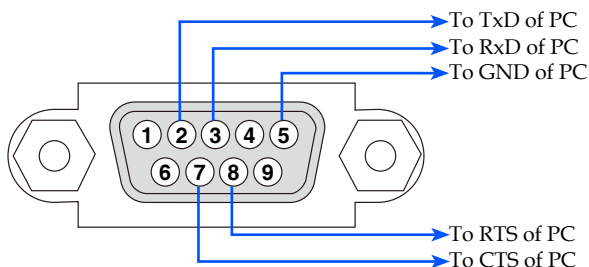
NOTE: Contact your local dealer for a full list of the PC Control Codes if needed.

Cable Connection

Communication Protocol

Baud rate38400 bps
Data length.....8 bits
ParityNo parity
Stop bit.....One bit
X on/off.....None
Communications procedure.....Full duplex

PC Control Connector (D-SUB 9P)



NOTE 1: Pins 1, 4, 6 and 9 are not used.

NOTE 2: Jumper "Request to Send" and "Clear to Send" together on both ends of the cable to simplify cable connection.

Troubleshooting Check List

Before contacting your dealer or service personnel, check the following list to be sure repairs are needed also by referring to the "Troubleshooting" section in your user's manual. This checklist below will help us solve your problem more efficiently.

* Print the following pages.

Frequency of occurrence always sometimes (How often? _____) other (_____)

Power

- No power (POWER indicator does not light green).
 - Power cable's plug is fully inserted into the wall outlet.
 - Lamp cover is installed correctly.
 - Lamp Hours Used (lamp operation hours) was cleared after lamp replacement.
 - No power even though you press and hold the "POWER ON" button for a minimum of 1 second.
- Shut down during operation.
 - Power cable's plug is fully inserted into the wall outlet.
 - Lamp cover is installed correctly.
 - Power Management is turned off (only models with the Power Management function).

Video and Audio

- No image is displayed from your PC or video equipment to the projector.
 - Still no image even though you connect the projector to the PC first, then start the PC.
 - Enabling your notebook PC's signal output to the projector. A combination of function keys will enable/disable the external display. Usually, the combination of the "Fn" key along with one of the 12 function keys turns the external display on or off.
 - No image (blue background).
 - Still no image even though you press the AUTO ADJ. button.
 - Still no image even though you carry out [RESET] in the projector's menu.
 - Signal cable's plug is fully inserted into the input connector.
 - A message appears on the screen. (_____)
 - The source connected to the projector is active and available.
 - Still no image even though you adjust the brightness and/or the contrast.
 - Input source's resolution and frequency are supported by the projector.
- Image is too dark.
 - Remains unchanged even though you adjust the brightness and/or the contrast.
- Image is distorted.
 - Image appears to be trapezoidal (unchanged even though you carry out the [KEYSTONE] adjustment).
- Parts of the image are lost.
 - Still unchanged even though you press the AUTO ADJ. button.
 - Still unchanged even though you carry out [RESET] in the projector's menu.
- Image is shifted in the vertical or horizontal direction.
 - Horizontal and vertical positions are correctly adjusted on a computer signal.
 - Input source's resolution and frequency are supported by the projector.
 - Some pixels are lost.
- Image is flickering.
 - Still unchanged even though you press the AUTO ADJ. button.
 - Still unchanged even though you carry out [RESET] in the projector's menu.
 - Image shows flickering or color drift on a computer signal.
- Image appears blurry or out of focus.
 - Still unchanged even though you checked the signal's resolution on PC and changed it to projector's native resolution.
 - The throw distance is within 47" to 516" (1189mm to 13105mm).
 - Still unchanged even though you adjusted the focus.
- No sound.
 - Audio cable is correctly connected to the audio input of the projector.
 - Still unchanged even though you adjusted the volume level.

Other

- Remote control does not work.
 - No obstacles between the sensor of the projector and the remote control.
 - Projector is placed near a fluorescent light that can disturb the infrared remote controls.
 - Batteries are new and are not reversed in installation.
- Buttons on the projector cabinet do not work.
 - [CONTROL PANEL LOCK] is not turned on in the menu. Still unchanged even though you press and hold the EXIT button for minimum of 10 seconds.

In the space below please describe your problem in detail.

Information on application and environment where your projector is used

Projector

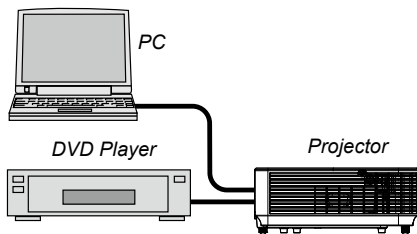
Model number:
Serial No.:
Date of purchase:
Lamp operating time (hours):
Eco Mode: Off Eco
Information on input signal:
Horizontal synch frequency [] Hz
Vertical synch frequency [] Hz
Synch polarity H (+) (-)
V (+) (-)
Synch type Separate Composite
 Sync on Green
STATUS Indicator:
Steady light Orange Green
Blinking light [] cycles
Remote control model number:

Installation environment

Screen size: inch
Screen type: White matte Beads Polarization
 Wide angle High contrast
Throw distance: feet/inch/m
Orientation: Ceiling mount Desktop
Power outlet connection:
 Connected directly to wall outlet
 Connected to power cord extender or other (the number of connected equipment _____)
 Connected to a power cord reel or other (the number of connected equipment _____)

Computer

Manufacturer:
Model number:
Notebook PC / Desktop
Native resolution:
Refresh rate:
Video adapter:
Other:



Signal cable

NEC standard or other manufacturer's cable?
Model number: Length: inch/m
Distribution amplifier
Model number:
Switcher
Model number:
Adapter
Model number:

Video equipment

VCR, DVD player, Video camera, Video game or other
Manufacturer:
Model number:

REGISTER YOUR PROJECTOR!

(for residents in the United States, Canada, and Mexico)

Please take time to register your new projector. This will activate your limited parts and labor warranty and InstaCare service program.

Visit our web site at www.necdisplay.com, click on support center/register product and submit your completed form online.

Upon receipt, we will send a confirmation letter with all the details you will need to take advantage of fast, reliable warranty and service programs from the industry leader, NEC Display Solutions of America, Inc.

NEC