

Welcome to the world of replay.

3Play® 425

For years, the extremely high cost of live sports production tools has made it nearly impossible for smaller organizations to deliver a better viewing experience.

Now, NewTek 3Play 425 – at a newly reduced price – eliminates the barrier of costly live sports production tools by making professional instant replay and slow motion available to everyone who previously thought it was out of their reach.

Local broadcasters, school teams, and emerging leagues now have a multi-camera, live sports solution that makes it easy to move up to full-tilt live sports production in network-quality HD. 3Play 425 helps level the playing field, with a system compact enough to go anywhere.

Producers now have the power to deliver more than replay, with real-time highlights, show-stopping slow motion, and game-winning moves that put fans right in the middle of the action.

Creating high-impact sports programs does much more than grow audiences. Producers can build their brands with the look of a major league sports show.

At a glance

- **Big Look for Local Sports**
Multi-camera instant replay, slow motion, and real-time highlights editing
- **Mobile Replay**
4-camera replay solution scaled for mobility to produce high-impact local sports anywhere
- **Space-saving Form Factor**
Compact 2U frame for live sports in small spaces
- **Mix-and-Match HD/SD**
Flexible I/O with mix-and-match HD and SD component, composite, and SDI connectivity for any resolution
- **ISO Recording**
Multi-track ISO recording of each camera feed for complete access to source footage
- **Full Control**
Optional countertop or counter-sunk control console for maximum tactile control



Monitors not included. Control Surface optional.

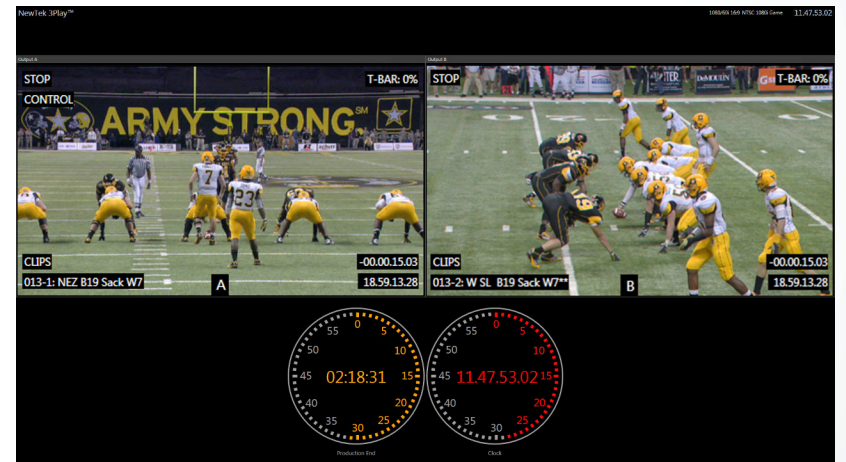
Video Input	Up to 4 simultaneous live video sources, in any combination of supported connection types, resolutions, and frame rates - Direct input of cameras and video devices in any combination of HD-SDI, HD Component, SD-SDI, SD Component, Y/C (BNC), or Composite connections - Per-input format configuration, scaler, and frame synchronizer enabling intermixing of formats
Video Output	2 fully independent playout channels, individually configurable for output via SDI or Analog (configurable for Component or Y/C + Composite) - HDMI output that follows the actively-controlled playout channel - Ethernet connection for A/V output over a local network to TriCaster®
Output Modes	A;B; A+B
Recording	Simultaneous recording of up to 4 live video sources
Recording Format	Native recording up to 1080p resolution in MPEG-2 all I-frame format
Recording Capacity	Accommodates ~40 hours 1080i via internal drive and 1TB removable media drive (included) - Trayless SATA III removable drive bay with hot-swap support for extended storage and backup - Simultaneous recording of 2 channels per drive
Playback	0% to 100% variable-speed playback
Monitoring	Resizable, full field rate preview monitors for all live sources and playout channels
Multi-Viewer	Supported with 2nd display, including playback data
Audio Inputs	4 SDI Embedded 3 x 2 Balanced 1/4" 1 x 2 Balanced XLR
Audio Outputs	2 SDI Embedded 1 x 2 Balanced XLR 1 x 2 Balanced 1/4"
Supported Session Formats	- NTSC model: 1080/30p, 1080/24p, 1080/60i, 720/60p, 720/30p, 720/24p, 480/60i - Multi-Standard model: NTSC 1080/30p, 1080/24p, 1080/60i, 720/60p, 720/30p, 720/24p, 480/60i; NTSC-J 1080/30p, 1080/24p, 1080/60i, 720/60p, 720/30p, 720/24p, 480/60i; PAL 1080/25p, 1080/24p, 1080/50i, 720/50p, 720/25p, 720/24p, 576/25i
Processing	Video: 4:4:4:4, 32-bit Floating Point Audio: 4 channels, 96kHz, 32-bit Floating Point
A/V Standards	HD-SDI video conforms to SMPTE 292M SD video conforms to SMPTE 259M and ITU-R BT.656 Analog audio levels conform to SMPTE RP-155
Time Code	External LTC source or internal system clock
Genlock	Locks to HD or SD analog signals Supports either tri-level or bi-level sync sources
Controller	Optional 3Play hardware control surface - Surface ~ 10.0 W x 0.5 H x 11.6 D in (25.4 x 1.3 x 29.5 cm) - Base ~ 9.0 W x 10.7 D in (22.9 x 27.2 cm) - Base Height ~ 0.5-2.0 in (1.3-5.1 cm) - 5.9 lbs (2.7 kg)
System Physical	2U Rack Mount, with 430W power supply and multi-tiered hardware and software fail-safe - 19.0 x 3.5 x 21.5 in (48.3 x 8.9 x 54.6 cm) - 26 lbs (11.8 kg)

NX-001854-0001, Rev. 05

© 2017 NewTek, Inc. All rights reserved. TriCaster, 3Play, TalkShow and LightWave 3D are registered trademarks of NewTek, Inc. NDI, MediaDS, LightWave, ProTek, and Broadcast Minds are trademarks and/or service marks of NewTek, Inc.



3Play 425 User Interface



3Play 425 Multiview in Outputs display mode

Subject to change without notice.

For complete technical specifications, please visit the 3Play 425 product page at www.newtek.com

Multi-standard pricing and availability may vary. Please contact your local reseller for details.

