

# L 1039-10 charger

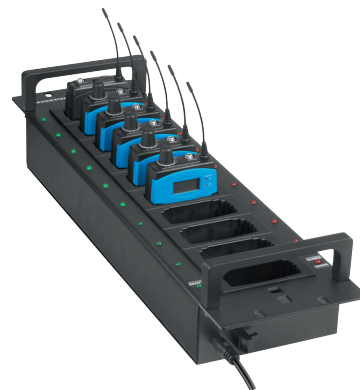
## FEATURES

- Rack-mountable ten-bay charger
- Accommodates Tourguide EK 1039 receivers; ew G3, ew G2 and 2000 Series bodypack receivers/transmitters
- Slim, rugged design
- External DC power supply included

The **L 1039-10 charger** is compatible with the Tourguide EK 1039 receivers and ew G3, ew G2 or 2000 series bodypack receivers/transmitters.

The rugged, easy-to-use charger features ten charging bays with charging status LED's. Its plug-in slots can charge up to ten receivers simultaneously.

A special catch holds the receivers securely in place and ensures that they remain in contact with the charger even in mobile use. The charger comes equipped with holders and installation brackets for easy installation in a 19" rack. Status LEDs clearly indicate whether the receivers have reached a full charge.



## ARCHITECT'S SPECIFICATIONS

The rugged charger shall be capable of simultaneously charging up to ten EK 1039 Tourguide receivers or up to ten bodypack receivers/transmitters of the Sennheiser ew G3, ew G2 or 2000 series. The charger shall feature a 19" rack-mountable housing for installation in a standard 19" rack; the housing shall be designed to fit in cabinets or transport cases. The charging bays shall include a snap-in mechanism to hold the receivers/transmitters in place during transport. LEDs at the charging bays shall indicate charge status. The input voltage shall range from 12–15V, the input current shall be maximum 3.4 A. Nominal charging voltage per charging slot shall range from 3.7–4.1 V, the charging current shall be typical 500 mA per charging slot. The typical charging time shall be 4 hours. Operating temperature shall range from 0°C – 40°C (32°F – 104°F). The charger dimensions shall be approximately 482 x 70 x 132 mm (18.98" x 2.76" x 5.19" or 3U). Weight (unequipped) shall be approximately 1.750 grams (3.9 lbs.). The charger shall be the Sennheiser L 1039-10.

## TECHNICAL DATA

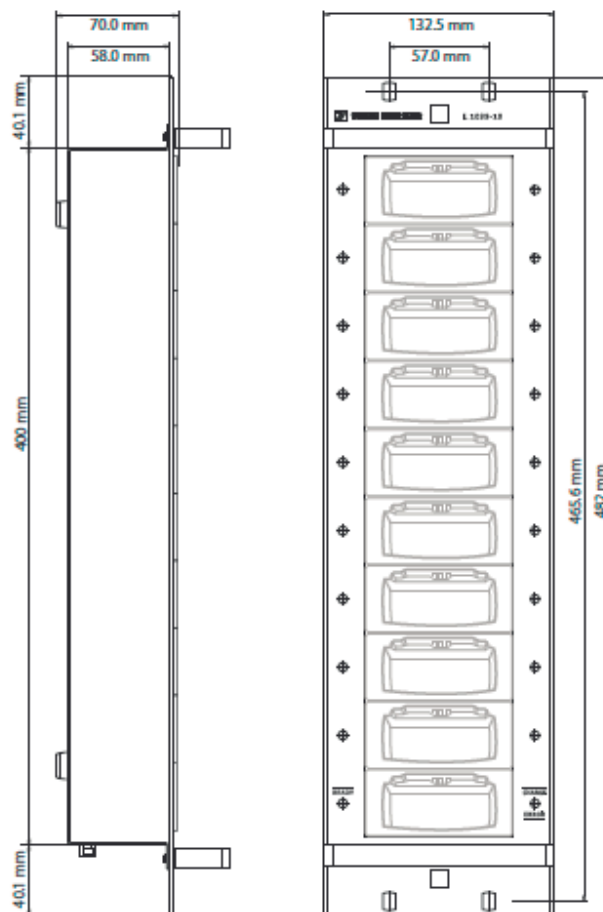
Input voltage.....	12 ... 15 V
Input current.....	max. 3.4 A
Charging voltage.....	nom. 3.7 ... 4.1 V
Charging current.....	typ. 10 x 500 mA
Charging time.....	typ. 3 ... 4 h
temperature range.....	0 °C ... + 40 °C (32°F – 104°F)
Dimension.....	approx. 482 x 70 x 132 mm (3HE) (18.98" x 2.76" x 5.19" )
Weight.....	approx. 1750 g (3.9 lbs. )

## DELIVERY INCLUDES

- 1 L 1039-10 charger
- 1 NT 12-50C (incl. EU/US/UK mains cable)
- 1 Instruction Manual

## L 1039-10 charger

### DIMENSIONS



### PRODUCT VARIANTS

Tourguide receiver;

EK 1039-BW 626 – 698 MHz

Cat. No. 505542

EK 1039-CW 718 – 790 MHz

Cat. No. 505543

EK 1039-DW 790 – 865 MHz

Cat. No. 505544

### RECOMMENDED ACCESSORIES

NT 12-50C-EU Power supply Europe

Cat. No. 505712

NT 12-50C-UK Power supply UK

Cat. No. 505713

NT 12-50C-US Power supply US

Cat. No. 505714

BA 2015 Battery

Cat. No. 009950

Sennheiser electronic GmbH & Co. KG  
Am Labor 1, 30900 Wedemark, Germany  
[www.sennheiser.com](http://www.sennheiser.com)

 **SENNHEISER**