

# SWA1801z SPECIFICATIONS

## System Specifications

Frequency Range (-10 dB)	35 Hz-120 Hz
Frequency Response (-3 dB)	45 Hz-120 Hz
Maximum SPL @ 1m	129 dB
Peak Output @ 1m	135 dB
Crossover Frequency	120 Hz (12 dB/octave)
Input Type	Balanced differential
Input Impedance	50 kΩ
Input Protection	Level protected
Thermal Protection	Input stage muting, auto-reset

## Transducer Specifications

### Low-Frequency Transducer

Diameter	18" (457 mm)
Voice Coil Diameter	4.0" (102 mm)

## Power Amplifier

### Low-Frequency Power Amplifier

Rated Power*	800 Watts continuous 1000 Watts peak
Rated THD	< 0.03 %
Cooling	Passive

## Line Input Power

US	120 V, 60 Hz
Europe	230 V, 50 Hz

\* Rated power into loudspeaker's rated impedance.

## Physical Properties

Height	28.5" (724 mm)
Width	23.5" (597 mm)
Depth	23.5" (597 mm)
Weight	132 lbs. (60 kg)
Enclosure	15 mm thick multi-layered baltic birch wood

## Enclosure Geometry

Rectangular

## Mounting Methods

Floor mount only

**WARNING:** The cabinet has no rigging points and is not suitable for rigging. **NEVER** attempt to suspend the SWA1801z by its handles.

## Disclaimer

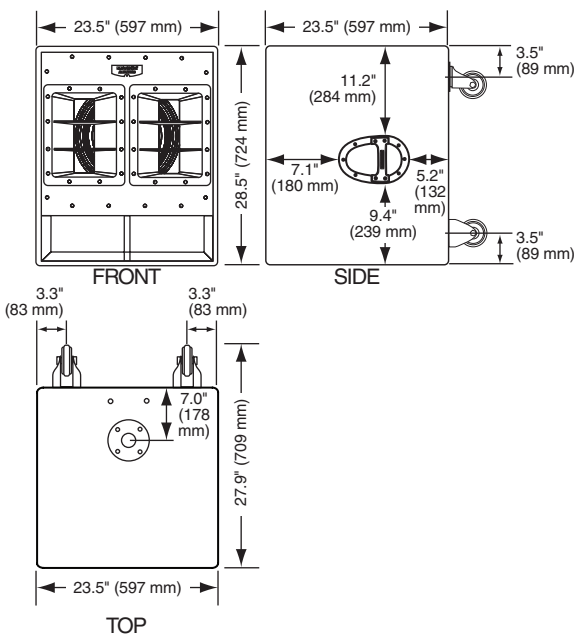
Since we are always striving to make our products better by incorporating new and improved materials, components, and manufacturing methods, we reserve the right to change these specifications at any time without notice.

"Mackie" and the "Running Man" figure are registered trademarks of LOUD Technologies Inc.

All other brand names mentioned are trademarks or registered trademarks of their respective holders, and are hereby acknowledged.

©2005 LOUD Technologies Inc.  
All Rights Reserved.

## Dimensions



## SWA1801z On Axis Frequency Response (with second and third harmonic components)

