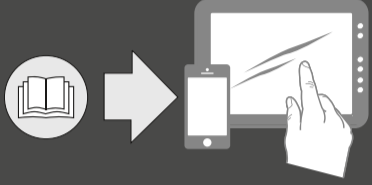




MKH 8050

- Quick Guide
- Kurzanleitung
- Guide rapide
- Guida rapida
- Guía de inicio rápido
- Guia rápido
- Beknopte handleiding
- Krótka instrukcja obsługi
- Snabbguide
- Kort vejledning
- Ръководство
- Γρήγορος οδηγός
- Kısa Kılavuz
- Краткая инструкция
- 快速指南
- 快速使用指南
- クイックガイド
- 퀵 가이드

SENNHEISER



Sennheiser Documentation App



ANDROID APP ON
Google play

Available on the
App Store

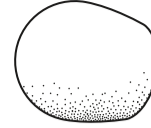
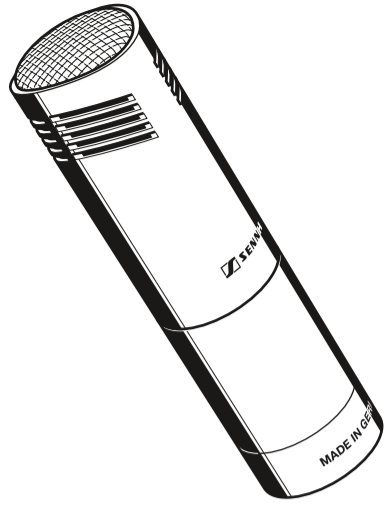
or online at
www.sennheiser.com/download
MKH 8050_

Sennheiser electronic GmbH & Co. KG

Am Labor 1, 30900 Wedemark, Germany
www.sennheiser.com

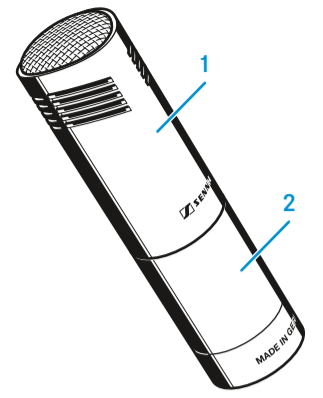
Printed in Germany, Publ. 12/18, 581392/A01

In the box

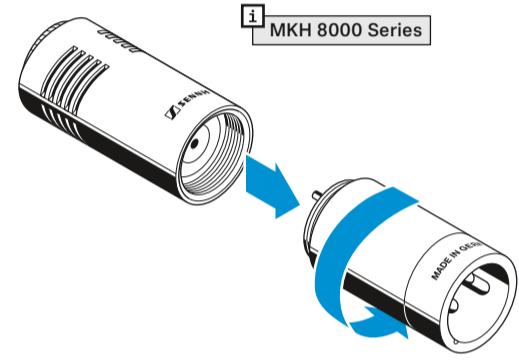
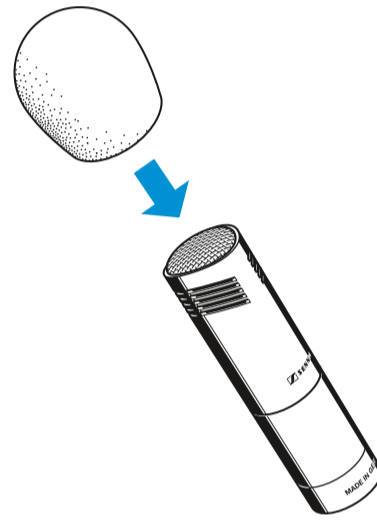
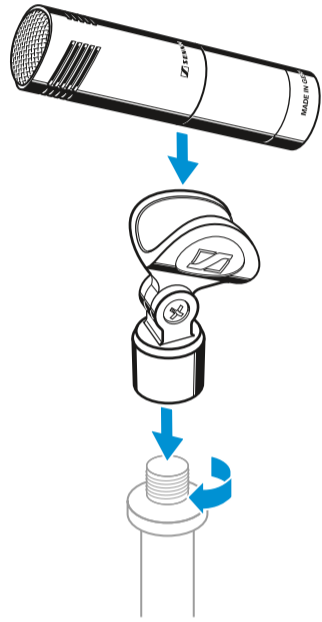


Overview

- 1 Microphone head
- 2 XLR module



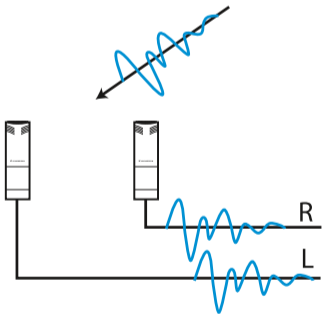
Setup



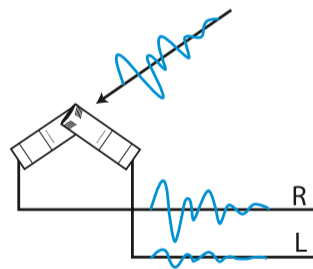
MKH 8000 Series

Stereo recording

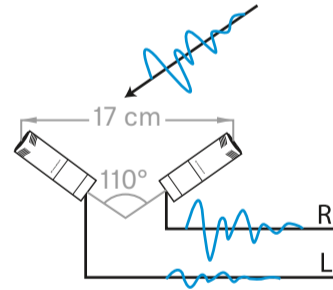
Time-of-arrival stereo (AB):
(almost) only time-of-arrival differences



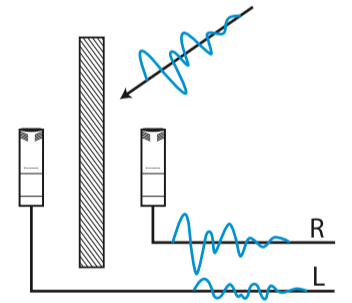
Intensity stereo (XY):
only sound pressure level differences



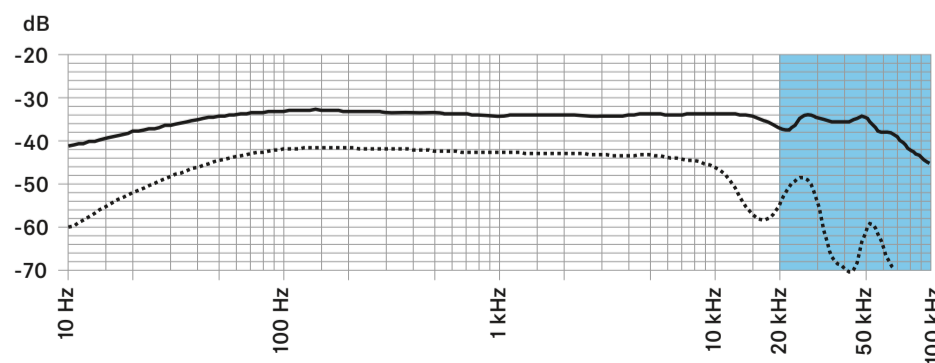
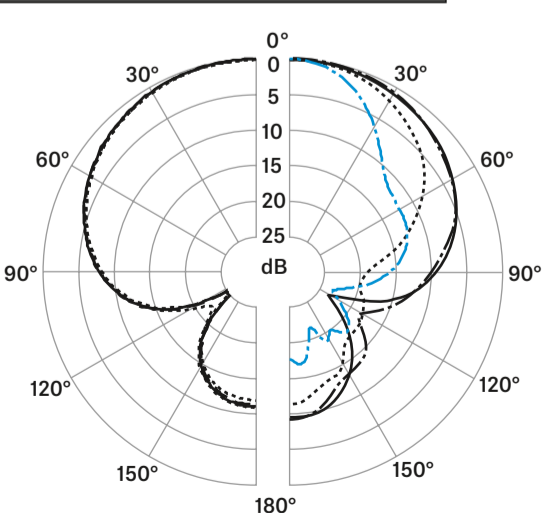
Equivalence or mixed stereo (here: ORTF):
sound pressure level and time-of-arrival differences



Baffle stereo (here: OSS):
sound pressure level, time-of-arrival and spectral differences with off-axis sound



Polar pattern and frequency response





- 125 Hz 2,000 Hz
- 250 Hz - - - 4,000 Hz —
- 500 Hz — 8,000 Hz - - -
- 1,000 Hz 16,000 Hz
- 32,000 Hz - - -

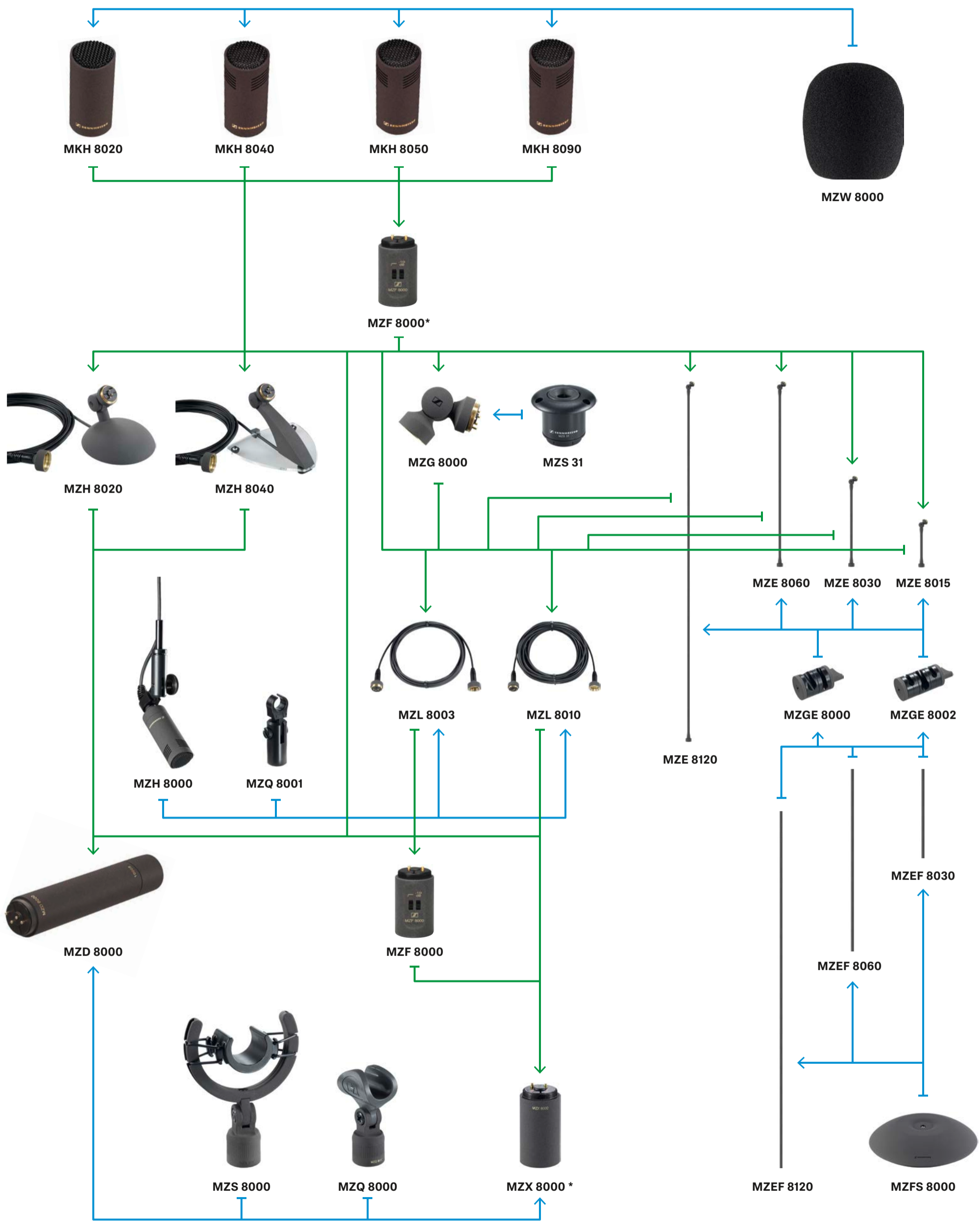
..... 90°
— 0°

Specifications

Pick-up pattern	super-cardioid
Frequency response	30 - 50,000 Hz
Sensitivity	-34 dBV/Pa (31 mV/Pa) with MZF 8000 -44 dBV/Pa (10 mV/Pa)
Max. SPL	142 dB with MZF 8000 137 dB
Equivalent noise level	13 dB(AA) (DIN-IE 651) 22 dB (CCIR 268-3)
Phantom powering	48 V ±4 V (P48, IEC 61938)
Current consumption	3.3 mA
Diameter	approx. 19 mm
Length	approx. 41 mm with MZF 8000 approx. 75 mm
Weight	approx. 25 g with MZF 8000 approx. 55 g
Operating temperature	-10 °C to 60 °C

Microphone and accessories overview

audio signal 
mounting accessories 



*Screw filter module MZF 8000 at suitable place between microphone head and XLR module.