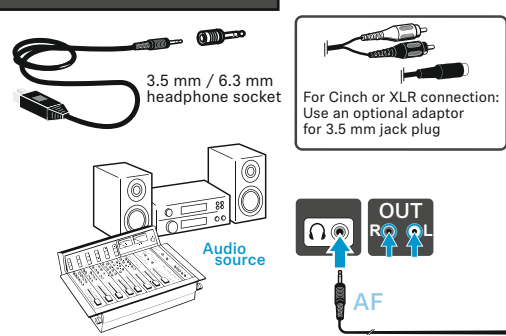
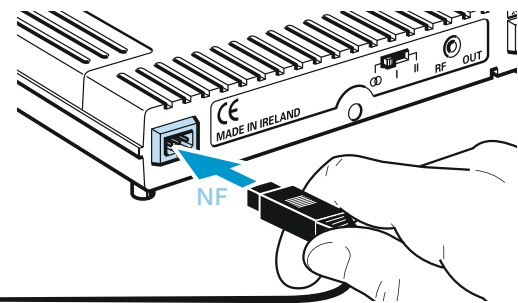


### Connecting audio source



### transmitter SI 30



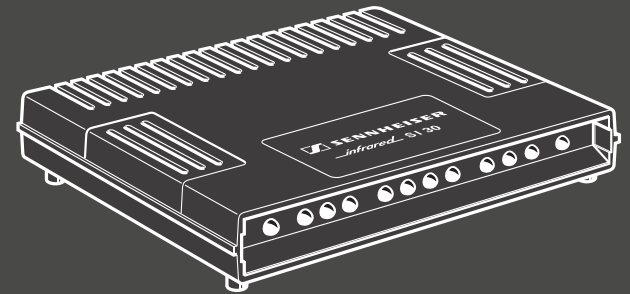
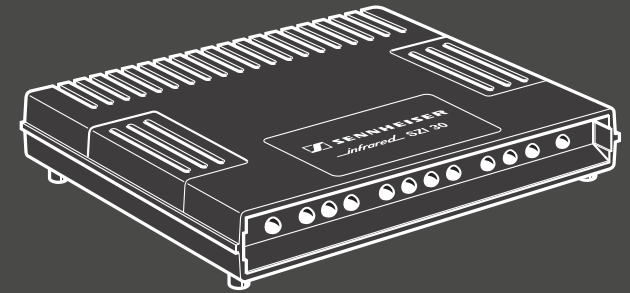
3



SENNHEISER

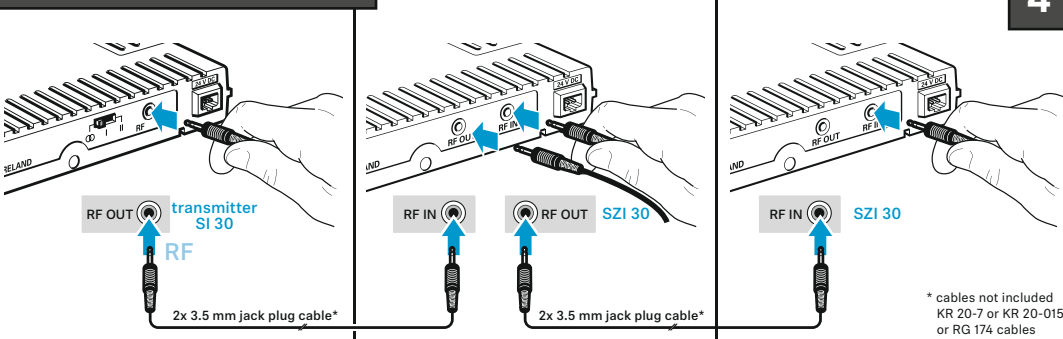
## SI 30 | SZI 30

### Infrared radiation system



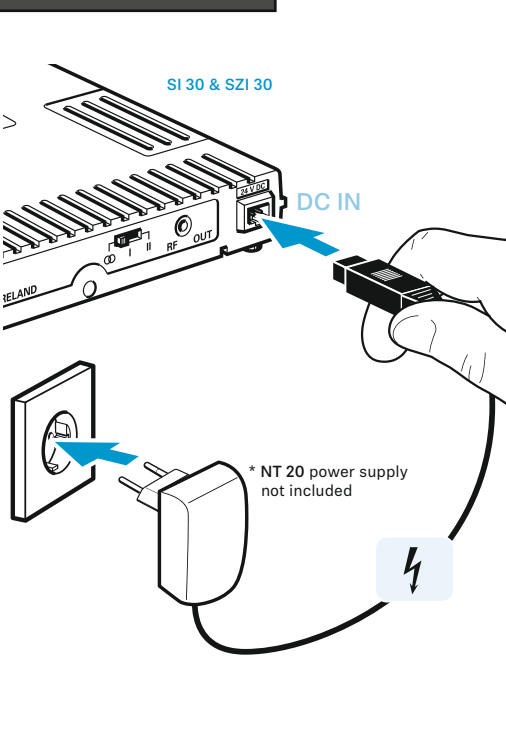
- Quick Guide  
 Kurzanleitung  
 Guide de démarrage rapide  
 Guida rapida  
 Guía de inicio rápido  
 Guia rápida  
 Beknopte handleiding  
 Γρήγορος οδηγός  
 Kort vejledning  
 Snabbguide  
 Pikaopas  
 Krótka instrukcja obsługi  
 Краткая инструкция  
 Kisa Kilavuz

### Connecting up to 5 SZI 30 to 1 SI 30

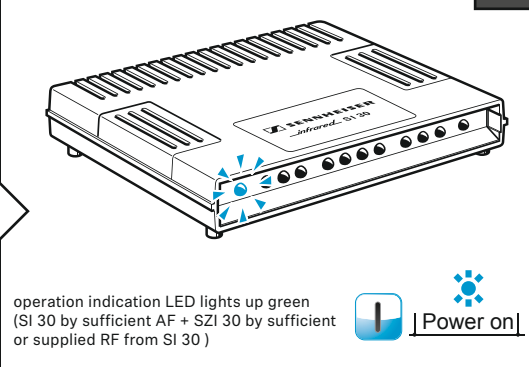


4

### Connecting to the mains

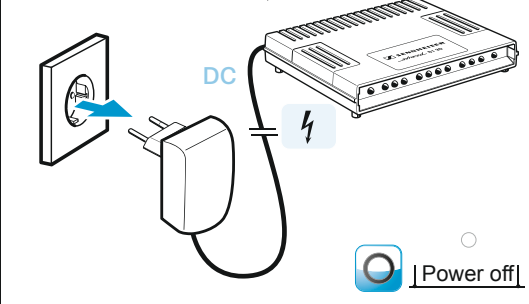


### Product switches ON automatically

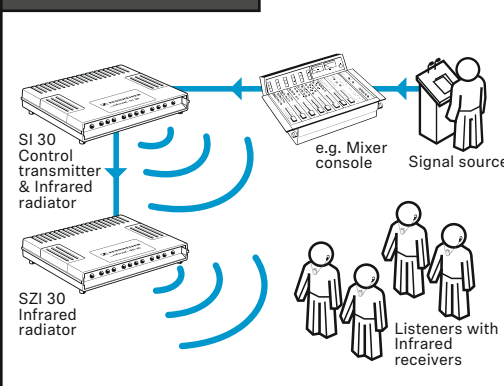


5

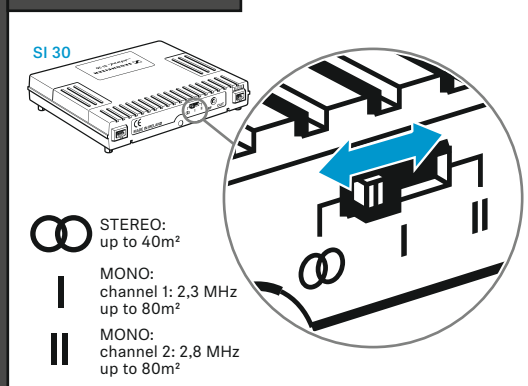
### Unplug to switch OFF



### Overview signal chain



### Switching channels



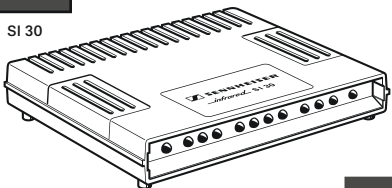
Sennheiser electronic GmbH & Co. KG

Am Labor 1, 30900 Wedemark, Germany  
 www.sennheiser.com

Publ. 583957, 07/19, A01

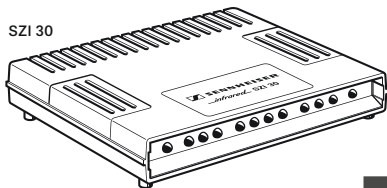
### In the box

SI 30



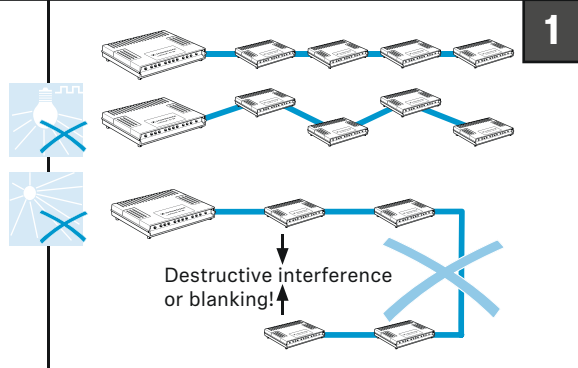
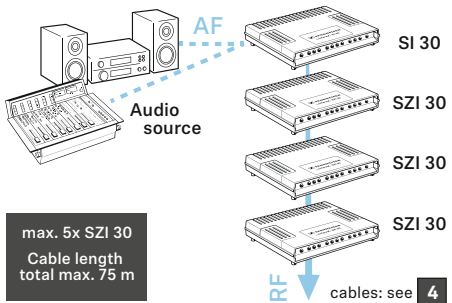
Power supply not included

SZI 30



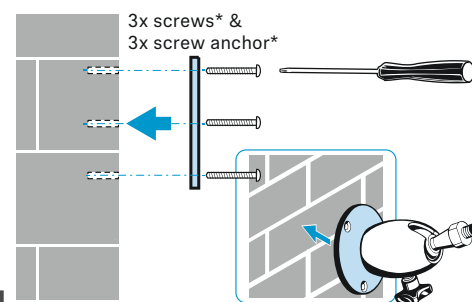
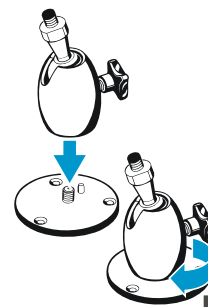
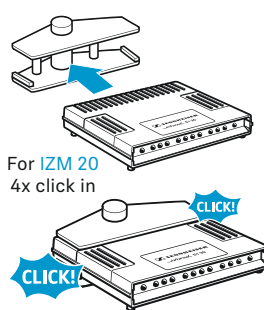
Power supply not included

### Planning installation

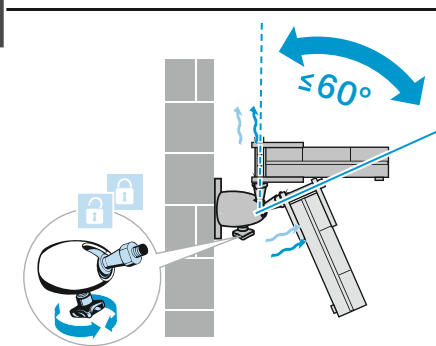
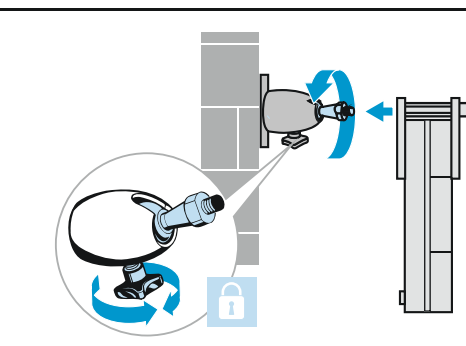


1

### Mounting on a wall

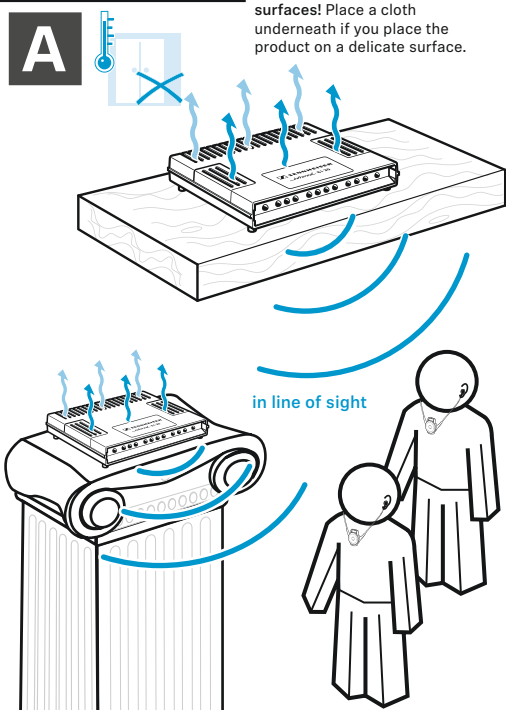


B

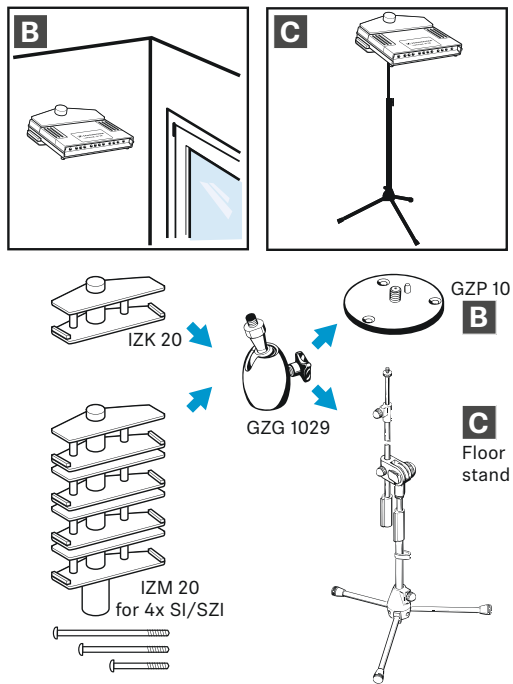


### Mounting possibilities

Rubber feet: Risk of staining furniture surfaces! Place a cloth underneath if you place the product on a delicate surface.



2



### Mounting on a stand

