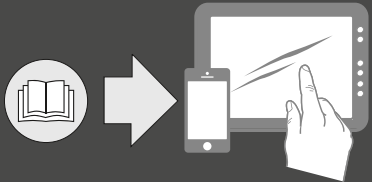




ew IEM G4

- Quick Guide
- Kurzanleitung
- Guide rapide
- Guida rapida
- Guía de inicio rápido
- Guia rápido
- Beknopte handleiding
- Krótka instrukcja obsługi
- Snabbguide
- Kort vejledning
- Pikaohje
- Γρήγορος οδηγός
- Kısa Kılavuz
- Краткая инструкция
- 快速指南
- 快速使用指南
- クイックガイド
- 퀵 가이드

SENNHEISER



Sennheiser Documentation App



ANDROID APP ON Google play

Available on the App Store

or online at www.sennheiser.com/download
ew IEM G4_

Sennheiser electronic GmbH & Co. KG

Am Labor 1, 30900 Wedemark, Germany
www.sennheiser.com

Publ. 01/18, 575863/A01

SR IEM



EK IEM



Battery

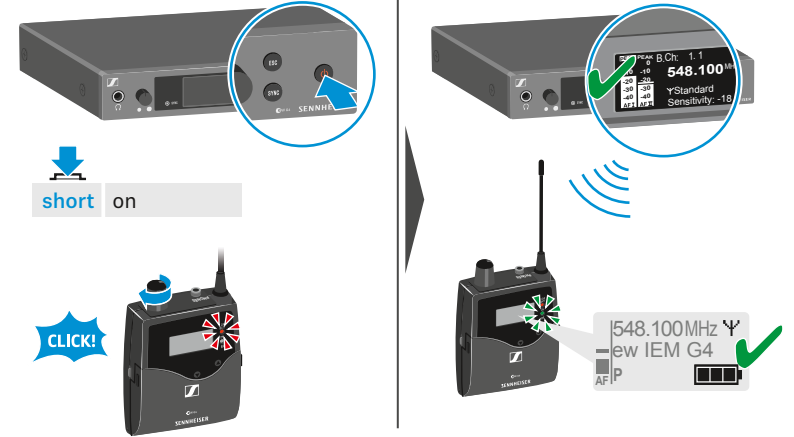


Low Battery

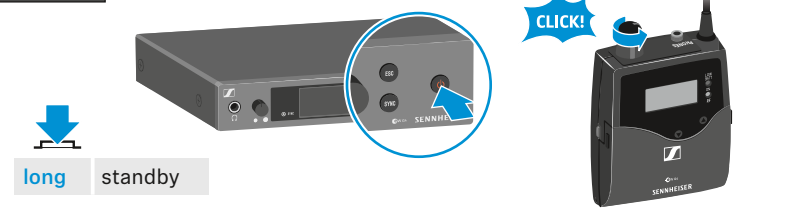
	100 %	> 8 h
	70 %	4 - 6 h
	30 %	2 - 3 h

LOW BATT

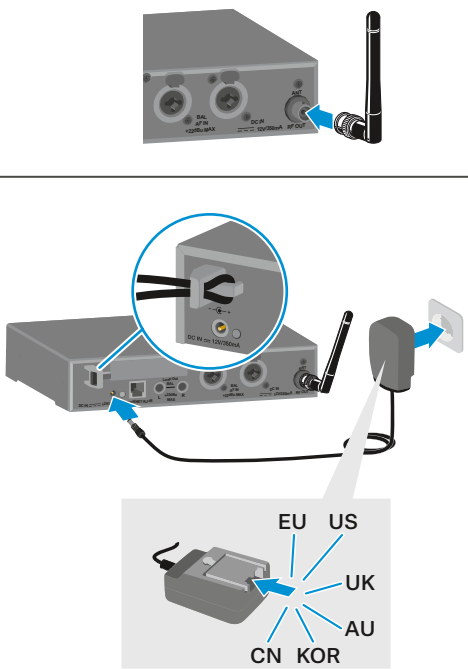
On



Off



Setup



Standard display

Frequency Bank . Channel: U1.16 ew IEM
Name: ew IEM
Warnings: RF Mute548.100 MHz
Y Standard
Sensitivity: -18dB

Audio level (mono) Sensitivity Mono
Audio level (stereo) Sensitivity Stereo
Transmission Power
Input sensitivity
Auto lock

LEDs

Warnings LED
Sync LED

A: 548.100MHz ew IEM G4 MUTE

B: Balance L=R

Menu

UP DOWN
ESC
SET

SET → Main menu "Menu"
Sensitivity
Mode
Easy Setup
Frequency Preset
Name
Auto Lock
Advanced
Exit

Extended menu "Advanced Menu"
Tune
Sync Settings
RF Power
Fullscreen Warnings
Brightness
Reset
IP-Address
Software Revision
Exit

"Fullscreen Warnings"
AF Peak
RF Mute
Exit

DOWN
UP
SET
ESC

SET → Main menu "Menu"
Squelch
Easy Setup
Frequency Preset
Name
Balance
Mode
High Boost
Auto Lock
Advanced
Exit

"Easy Setup"
Reset List
Current List
Scan New List

Extended menu "Advanced Menu"
Tune
Pilot Tone
Limiter
Volume Boost
LCD Contrast
Engineer Mode
Reset
Software Revision
Exit

Stereo

6.3 mm

XLR-3

OR

Instruction Manual

AUX

SR

Mode

Stereo

EK

Menu

Mode

Stereo

Mono

6.3 mm

XLR-3

OR

Instruction Manual

AUX

SR

Mode

Mono

EK

Menu

Mode

Focus

Advanced Menu

Pilot Tone

Inactive

Phones

VOLUME

6.3 mm

VOL

< 70 %

Auto lock

SR

1

2

3

Locked

Unlock?

SET

10 s

Auto lock

Instruction Manual

EK

1

2

3

Locked

Unlock?

SET

Sync

SYNC

OR

SYNC

Instruction Manual

OR

SYNC

Instruction Manual

$\le 10\text{ cm}$

$\le 4''$

Sensitivity

-42 dB ... 0 dB

Menu

Sensitivity

Mode

-18 dB

Squelch

Menu

Squelch

9 dB

25 dB

5 dB

RF

Mute

Instruction Manual

RF Mute On?

RF Mute Off?

SET

Network Control

WSM

Media Control

ETHERNET

Multichannel - Easy Setup

Bank 1 ... 20; U1 ... U6

Channel 1 ... 16

max. 16 channels

1

Menu

Easy Setup

Frequency Preset

2

Menu

Easy Setup

3

Instruction Manual

RJ 45