



Sennheiser Documentation App



or online at
www.sennheiser.com/download
 evolution wired_



e 965

Quick Guide
 Kurzanleitung
 Guide rapide
 Guida rapida
 Guía de inicio rápido
 Guia rápido
 Beknopte handleiding
 Krótka instrukcja obsługi
 Snabbguide

Kvikstartguide
 Pikaohje
 Γρήγορος οδηγός
 Kısa Kılavuz
 Краткая инструкция
 快速指南
 クイックガイド
 퀵 가이드

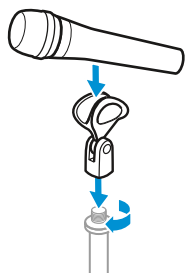
Sennheiser electronic GmbH & Co. KG

Am Labor 1, 30900 Wedemark, Germany
www.sennheiser.com

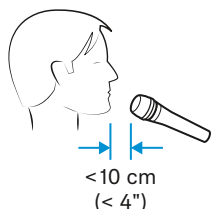
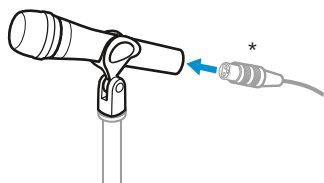
Printed in Germany
 Publ. 07/18, 581340/A01

SENNHEISER

Setup



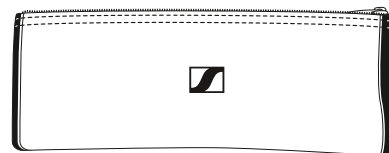
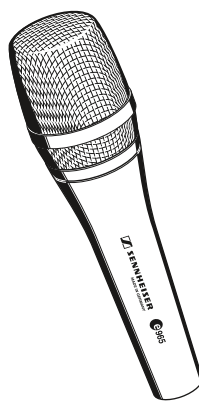
*XLR-3 cable not included



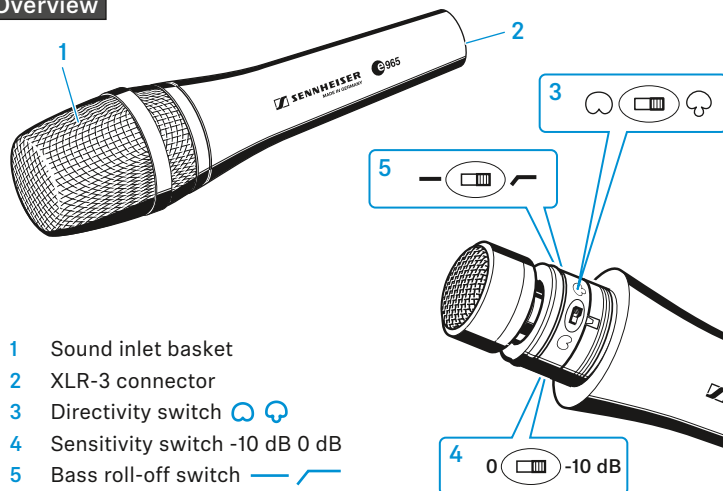
< 10 cm
 (< 4")



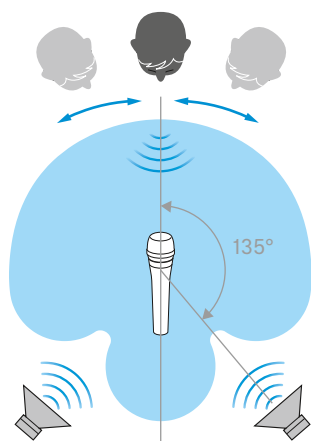
In the box



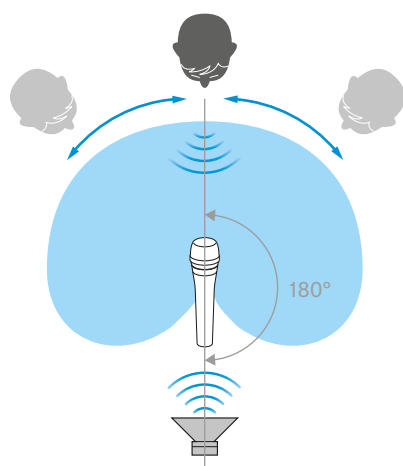
Overview



- 1 Sound inlet basket
- 2 XLR-3 connector
- 3 Directivity switch
- 4 Sensitivity switch -10 dB 0 dB
- 5 Bass roll-off switch

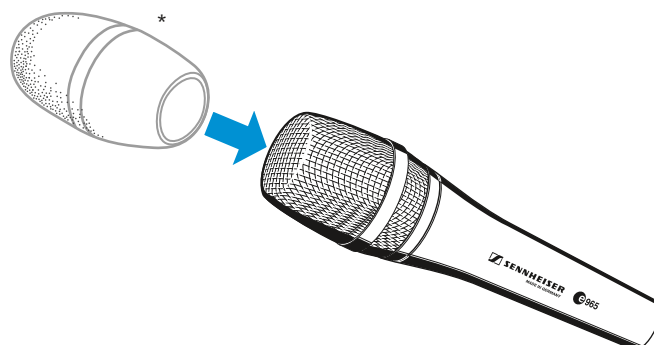


135°



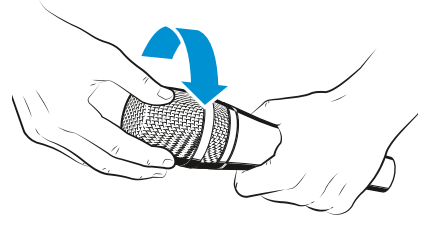
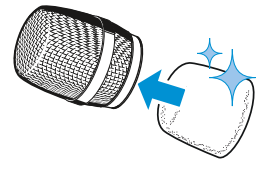
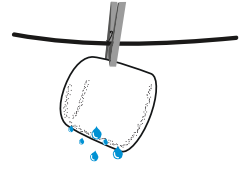
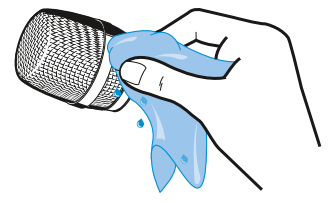
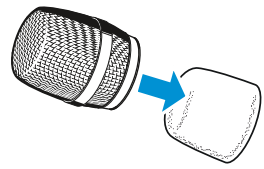
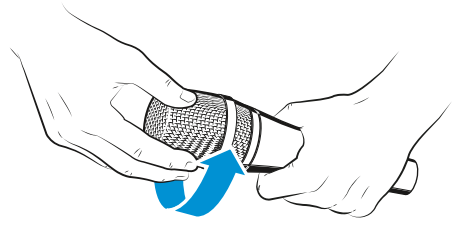
180°

Accessory

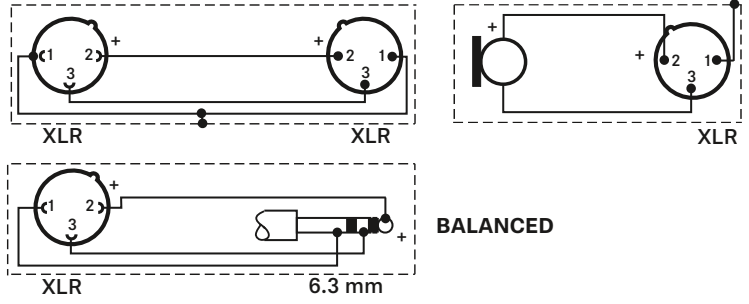


*MZW 4032 not included

Cleaning



Connector assignment



BALANCED

Specifications

Transducer principle	externally polarized dual diaphragm AF condenser microphone
Membran diameter	25.4 mm/1"
Frequency response	40 - 20,000 Hz
Pick-up pattern	cardioid/super-cardioid, switchable
Sensitivity (free field, at 1 kHz)	7 mV/Pa
with pre-attenuation	2.3 mV/Pa
Nominal impedance (at 1 kHz)	50 Ω
Min. terminating impedance	1 kΩ
Maximum sound pressure level (passiv)	142 dB
with pre-attenuation	152 dB
Equivalent noise level	21 dB (A)
Phantom powering	48 V / 3.5 mA
Connector	XLR-3
Temperature range	0 °C to +40 °C
Dimensions	∅ 48 x 199 mm
Weight	396 g

Polar pattern and frequency response

