

Your Voice. Your Mix.
Your Night.





VOICESOLO
PERSONAL VOCAL MONITORS

Introducing a new concept in personal monitoring

Hearing yourself well makes for a great performance. Make every night great with VoiceSolo, an intelligible and powerful monitor that puts you in control.

At TC-Helicon, our passion for improving vocal production and performance focuses on the need for high quality, close field, performer-controlled monitor speakers. Three application optimized products in the VoiceSolo range offer choices for artists who desire more space onstage, those who want to downsize but aren't willing to compromise fidelity, and those who would prefer to adjust monitor level and mix themselves.

A distinctive and unique mounting system allows VoiceSolo to become an integral part of most standard boom-equipped mic stands. This offers the benefits of putting controls within reach, saving space and simplifying setup. Great care was taken to custom design a driver that reproduces the human voice in the most intelligible and natural way and then mating this to a high power, lightweight amplifier.

Hear yourself better and perform better with VoiceSolo from TC-Helicon!



You're in Control

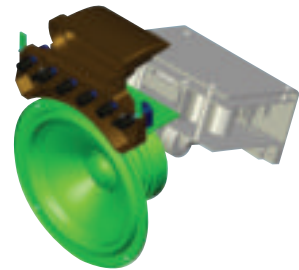
All three VoiceSolo products feature a convenient front-mounted volume control. Whether you're monitoring a solo voice or a complete mix, you set your own level.

Imagine not having to beg the person nearest the mixer to turn up your monitor! And, because the VSM-300 and VSM-200 have a mic preamp and thru jacks, you can choose between an "all me" mix or an external group monitor mix.

Power and Precision Sound

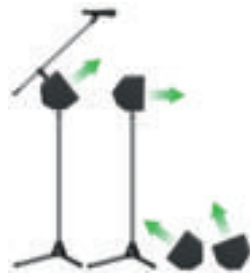
Cutting through a loud stage sound requires hefty amplifier power and a speaker that delivers. All three products in the VoiceSolo range feature a custom-designed ICT™ point-source driver for a surprisingly wideband sound.

The two powered VoiceSolo monitors, VSM-300 and VSM-200, feature a 150 Watt BASH® amplifier which provides high efficiency, light weight and a transparent limiting circuit for protecting components. Despite their small size, the VSM-300 and 200 deliver up to 116 dB SPL at .5 meter.



Convenience and Versatility

Setups differ widely and VoiceSolo is ready to work in a variety of positions. Using a standard mic stand and the supplied adapters, setup is as simple as placing the monitor on your stand and clipping in the boom. VoiceSolo can also be mounted upright on your mic stand as a side fill monitor or as a small PA.



Off the stand, VoiceSolo's rubberized surfaces allow it to be firmly placed on a keyboard or on the floor in one of two wedge monitor positions. Here's the best part, when you're finished, the tuned port acts as a handy carrying handle!



Ingenious, easy set up

Once attached, the supplied adapters remain with your boom and stand base. Lift VoiceSolo onto the stand, clip in the boom and it's ready for cabling.

- ▶ Supplied adapters fit European and N. American mic stand threads (Euro shown)
- ▶ Provides sturdy yet adjustable connections with your stand



Powered by BASH®

So what's the big deal about VoiceSolo's amplifier technology? It's light-weight and powerful for a start. BASH® is a patented High Efficiency Power Amplifier circuit topology that has taken the best of Class D and Class AB and created a new Class of its own.

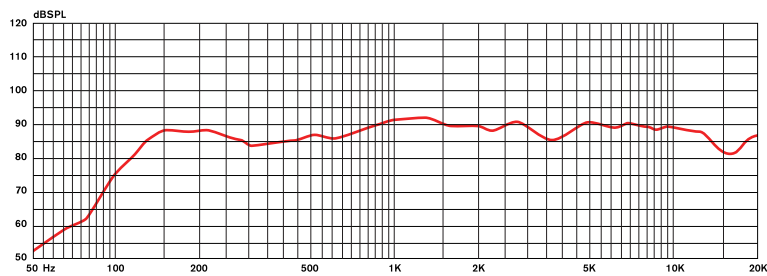
BASH® is a successful marriage of efficiency, low distortion, bandwidth, EMI, and sound quality resulting in the most effective solution for musical performance monitoring applications.



ICT™ Speaker

ICT™ or "Inductive Coupling Technology" uses a wireless electro-magnetic tweeter that does not require a crossover and cannot be burned out from heavy use or misuse.

The ICT™ dome uses a plastic cone and nitrile rubber surround, further enhancing durability and long term reliability. The 90° conical dispersion of the point source ICT™ driver allows a variety of placement options without compromising sound quality.

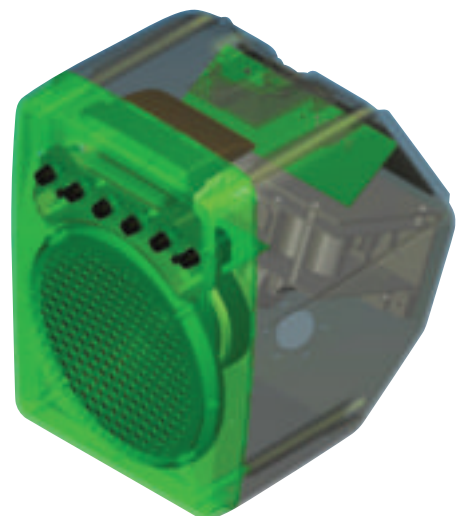


Enclosure Benefits

VoiceSolo's aluminum enclosure is light, tough and it cleverly integrates with your boom and mic stand. It is designed to minimize audio resonance from the rear so as not to interfere with the house sound.

The two mounting holes allow angled or flat placement on a mic stand. It can also sit upright on the floor or rest on your keyboard in one of two angled positions. Each resting surface is rubber to minimize slippage.

Also, because it is made from aluminum, the entire case dissipates heat so bulky heat sinks are not required on the active VSM-300 and VSM-200 models.



VSM-300

This premium active monitor is for the performer who wants it all: control, versatility and great sound. Adjustments that normally require calling or walking across the stage such as adjusting monitor level, mixing in a line input or tone shaping, can all be done on demand.

Complete with the VSM-300 is a versatile audio connection hub that, among other uses, allows you to control local mixing, level and EQ without affecting house sound. The onboard mic preamp accommodates a wide range of mics and features the SHAPE control that emulates a studio condenser mic sound when using a dynamic mic.



VSM-200

The “one knob” simplicity of the VSM-200 belies its capabilities as an active personal monitor. When a monitor mix is created elsewhere or the onboard mic preamp and pass thru connector is used, this VoiceSolo has a powerful presence and smooth sound to allow you to hear and perform better onstage.

The VSM-200 can also be used as a satellite speaker when used with a VSM-300 to create a stereo PA system for intimate live dates. In this case, the VSM-300 controls the master volume for both VoiceSolos.

For those looking to downsize, you can now replace a large power amp and even larger wedges with a set of VSM-200s to simplify setup and reduce heavy lifting after performances.



VSM-200P

This passive component of the VoiceSolo lineup allows users to keep their existing mixer and power amp setup while replacing bulky wedge monitors. And in keeping with the “you’re in control” philosophy of the entire VoiceSolo line, there is a detented volume control placed front and center for volume adjustments mid-set.

Two professional-grade Speakon™ combination connectors allow 1/4” and Speakon-equipped cables to be used for additional versatility.

Running a set of these at reduced volume control settings eases the impedance load on the amplifier as well as allowing an increase in monitoring level when required.



Technical Specifications



VSM-300



VSM-200



VSM-200P

I/O	<p>INPUTS 1/4" Line input Line input sensitivity- +20 dBu to -13 dBu XLR with 40VDC phantom power and switchable sensitivity range Mic input sensitivity- (+20 dB switch out) +4 dBu to -23 dBu (+20 dB switch in) -16 dBu to -43 dBu</p> <p>(I/O connector box) 1/4" Line input (Left/Mono) 1/4" Line input (Right) 1/4" Aux input XLR Mic input with 40VDC phantom power</p> <p>OUTPUTS (I/O connector box) 1/4" Mix output (Slaves to Output level and EQ) 1/4" Sub output (Slaves to Output level only) 1/4" Line thru (Left/Mono) 1/4" Line thru (Right) 1/4" Aux thru XLR Mic thru</p>	<p>INPUTS 1/4" Line input, XLR</p> <p>OUTPUTS XLR Pass Thru for input (Line or Mic)</p>	<p>INPUTS 2 parallel Speakon® combo jacks</p> <p>OUTPUTS 2 parallel Speakon® combo jacks</p>
Controls	<p>MIC In gain, Mono/stereo switch, Shape EQ control, Line in gain, LowEQ: ± 10 dB @ 120 Hz, High EQ ± 10 dB @ 15 kHz, 75/150 Low Cut, Output level control</p> <p>Clip LED for inputs and power amp clip, AC Power LED.</p>	<p>Amplifier Volume</p> <p>Clip LED for input and power amp clip, AC Power LED.</p>	<p>9 position detented volume knob</p>
Amplifier	<p>150 watts BASH® technology into 4 ohms (200 watts peak) Distortion: 0.5% @ 150W; 10% @ 200W Frequency response: 75 Hz-20 kHz</p>		N/A
Speaker	<p>Speaker: 6.5 inch patented ICT™ custom-designed point source driver includes inductively coupled tweeter Nominal impedance: 4 ohms 120 Watt Program / 240 Watt Peak power handling Conical dispersion: 90 degrees Frequency response: 120 Hz – 20 kHz Peak SPL: 116 dB @ .5 meter</p>		<p>Nominal impedance: 8 ohms Sensitivity: (1 Watt @ 1 meter): 90 dB</p>
AC	<p>Two non-interchangeable units: 220-240 VAC ~60 Hz 1.2A Fuse: T1.25AL 250V 120 VAC ~60 Hz 2A Fuse: T2AL 250V</p>		N/A
Weight	<p>Shipping weight: 12 lbs. (5.5 kg) Net weight: 10.8 lbs. (4.9 kg)</p>		<p>Shipping weight: 11 lbs. (5 kg) Net weight: 9.2 lbs. (4.2 kg)</p>
Enclosure	<p>Molded aluminum with integral bass port Color: Black Dimensions (H x W x D): 9" x 7" x 9.75" (23 cm x 18 cm x 25 cm)</p>		