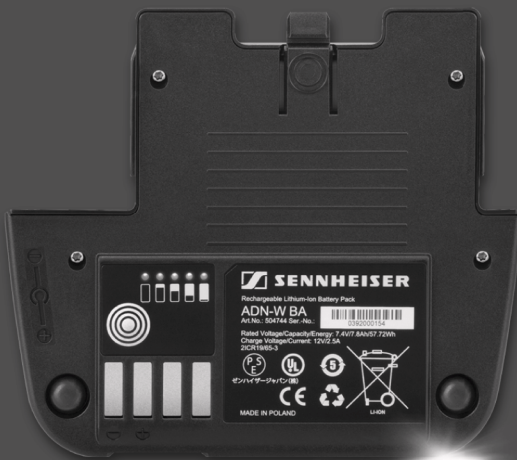


# ADN-W BA

## Li-Ion Battery Pack



Instruction manual



A detailed instruction manual for the overall ADN conference system can be found

- on the Internet at [www.sennheiser.com](http://www.sennheiser.com) or
- on the DVD-ROM supplied with the ADN CU1 central unit.













## Safety instructions for the Lithium-Ion battery pack

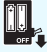



If abused or misused, the ADN-W BA battery pack may leak. In extreme cases, it may even present



- a heat hazard,
- a fire hazard,
- an explosion hazard,
- a smoke or gas hazard.

Please understand that Sennheiser does not accept liability for damage arising from abuse or misuse.

	Keep away from children.		Do not pack charged battery packs loose.
	Observe correct polarity.		Do not short-circuit.
	Do not expose to moisture.		Do not mutilate or dismantle.
	Only charge the battery pack with the appropriate Sennheiser chargers.		When not using the battery pack for extended periods of time, charge it regularly (charge it to approx. 50% of capacity about every 3 months).
	Only charge the battery pack at ambient temperatures between 10°C/50°F and 45°C/113°F.		Do not heat above 45°C/113°F, e.g. do not expose to sunlight or throw into a fire.
	Immediately remove the battery pack from an obviously defective device.		Do not continue to use a defective battery pack.

	Switch battery pack-powered devices off after use.		When not using the device for extended periods of time, remove the battery pack from the device.
	Only use the original Sennheiser battery packs.		Dispose of the battery pack at special collection points or return it to your specialist dealer.

### Intended use

Intended use of the product includes

- using the product for professional purposes,
- having read and understood this instruction manual, especially the chapter “Safety instructions for the Lithium-Ion battery pack” on page 1,
- using the product within the operating conditions and limitations described in this instruction manual.

“Improper use” means using the product other than as described in this instruction manual, or under operating conditions which differ from those described herein.


## The ADN-W BA Lithium-Ion battery pack

The ADN-W BA Lithium-Ion battery pack is part of the Sennheiser ADN conference system.

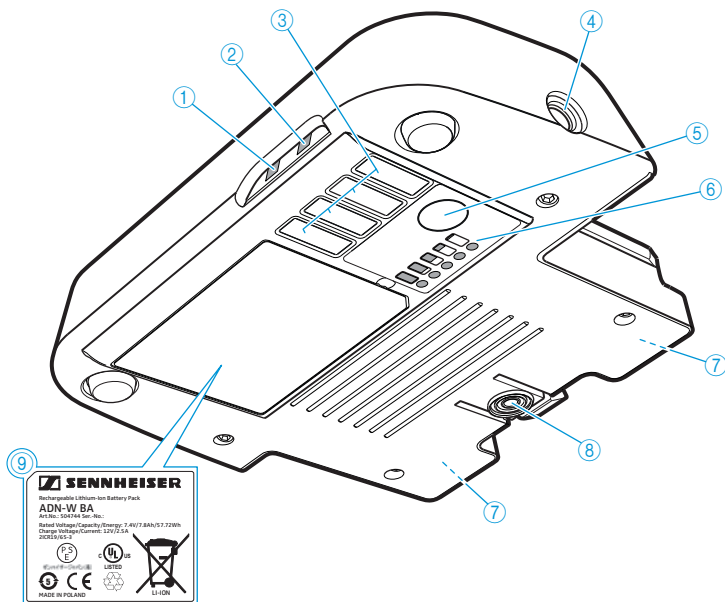
The ADN-W BA battery pack is designed for powering the ADN-W C1 and ADN-W D1 wireless conference units. It offers an operating time of approx. 20 hours.

## Package contents

- 1 ADN-W BA Lithium-Ion battery pack
- 1 instruction manual

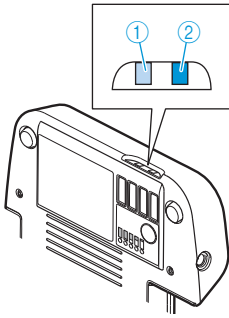
 To charge the ADN-W BA battery pack, you additionally require the ADN-W L 10 or ADN-W CASE UNITS chargers or the NT 12-50C power supply.

## Product overview ADN-W BA

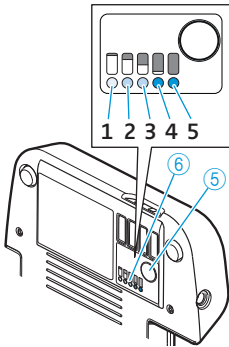


- ① Battery status indicator
- ② RF status indicator
- ③ Charging contacts for ADN-W CASE UNITS charging case
- ④ Hollow jack socket for connection of NT 12-50C power supply
- ⑤ Button for charge status indication
- ⑥ Charge status indicator
- ⑦ Contacts for connection to wireless conference unit and ADN-W L 10 charger
- ⑧ Battery release clip
- ⑨ Type plate

Over view of the status LEDs



Status LEDs	Color	Meaning
Battery status indicator ①	–	Battery capacity 5-100%
	orange, flashing slowly	Battery capacity < 5%, battery pack is almost flat
	orange, flashing rapidly	Battery pack is defective
RF status indicator ②	–	Good transmission quality
	blue, flashing slowly	Transmission quality is temporarily reduced
	blue, flashing rapidly	Transmission quality is permanently reduced



The charge status display ⑥ consists of 5 LEDs and can be called up by pressing the button ⑤. During charging, the LEDs show the obtained capacity.

LED ⑥	Color	Remaining capacity	Remaining operating time
1	red	approx. 0-19 %	approx. 0-4 hours
2	orange	approx. 20-39 %	approx. 4-8 hours
3	orange	approx. 40-59 %	approx. 8-12 hours
4	green	approx. 60-79 %	approx. 12-16 hours
5	green	approx. 80-100 %	approx. 16-20 hours

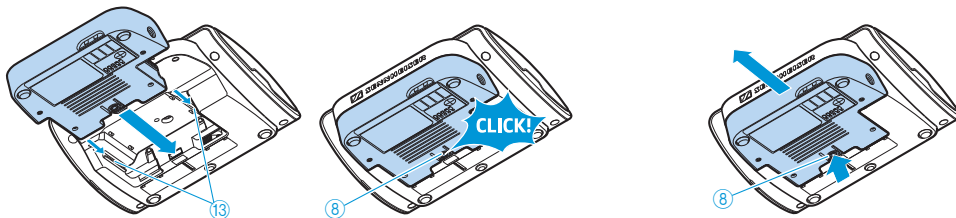
## Inserting/removing the ADN-W BA

To **insert** the ADN-W BA battery pack into the wireless conference unit:

- ▶ Check the battery pack before using it in order to ensure sufficient battery capacity and to exclude a defective battery pack (see page 8).
- ▶ Charge the battery pack if necessary (see page 5).
- ▶ Slide the battery pack into the battery guide rails ⑫ of the wireless conference unit.  
The battery release clip ⑧ locks into place with an audible click and secures the battery pack.

To **remove** the battery pack from the wireless conference unit:

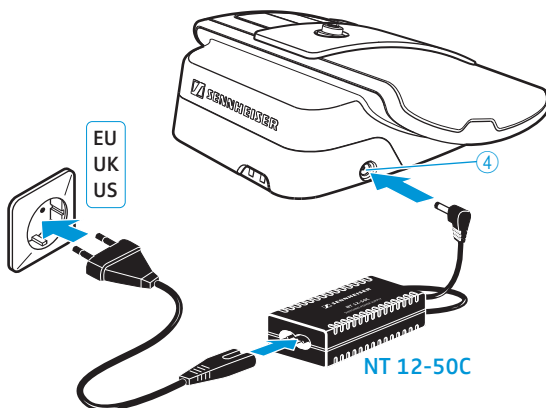
- ▶ Press the battery release clip ⑧ and pull the battery pack out of the battery guide rails.



## Charging the ADN-W BA

The ADN-W BA battery pack can be charged:

- while it is inserted in the wireless conference unit using the NT 12-50C power supply – even during operation,
  - separately using the NT 12-50C power supply,
  - separately in the ADN-W L 10 charger,
  - while it is inserted in the wireless conference unit using the ADN-W CASE UNITS charging case
- ▶ Connect the NT 12-50C power supply to the hollow jack socket ④ or charge the battery pack using the ADN-W L 10 or ADN-W CASE UNITS charger (see the instruction manual of the charger).



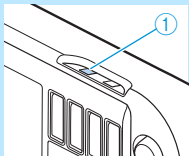
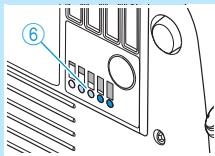


For optimum performance, durability and maintenance of the ADN-W BA battery pack, please observe the following:

- You can immediately use the ADN-W BA battery pack (battery capacity of approx. 30% upon delivery). You only have to recharge the battery pack when the battery charge is low. An initialization charge is not necessary.
- You can charge the battery pack at any time and for as long as you want. A complete charge cycle (100%) is not necessary.
- You do not have to regularly deep-discharge the battery pack to reach an optimum battery life cycle.
- If the displayed remaining operating time of the battery pack significantly differs from the actual operating time, you can re-calibrate the operating time display. To do so, completely discharge the battery pack and then fully recharge it again (100%).
- After charging, the battery pack can remain in the charger. The intelligent charging electronics monitors the charging process and prevents incorrect battery charging.
- When not using the wireless conference unit for extended periods of time, remove the battery pack from the device. Cover the contacts to avoid short circuits.
- When storing the battery pack for extended periods of time, charge it to approx. 50% of capacity.
- Only store the battery pack within the specified storage temperature range (see page 9).

### Behavior of the ADN-W BA battery pack during charging

When charging the battery pack using the NT 12-50C power supply or the ADN-W L10 or ADN-W CASE UNITS chargers, the battery pack and the corresponding charger will get warm. The battery status indicator ① and the charge status display ⑥ indicate the charging process:

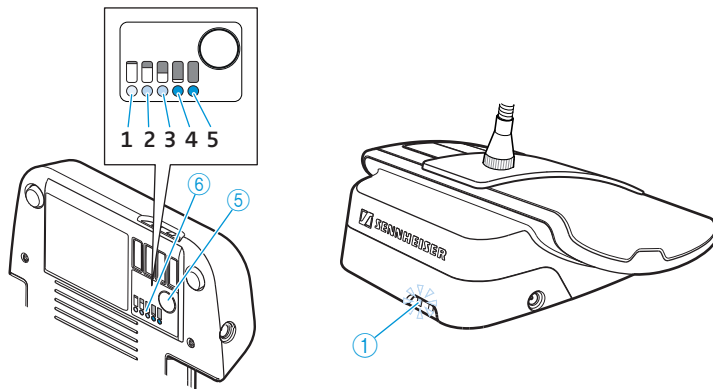
Battery status indicator ①	Charge status display ⑥	Meaning
lights up orange	lights up (the current charge status flashes)	Battery pack is being charged, a complete charging process takes approx. 4 hours
off	off	Battery pack is fully charged, continuous capacity monitoring
orange, flashing rapidly	–	Battery pack is defective
		

Charging may take longer if the temperature of the battery pack is below 10°C or over 45°C. In this case, in order to protect the battery pack, the charging process is interrupted until the temperature is again within the admissible range and the battery status indicator ① lights up orange. The charging process starts automatically.



### Checking the charge status of the battery pack


- ▶ Press the button ⑤.  
The charge status display ⑥ shows the current battery capacity for approx. 5 seconds. During operation, the battery status indicator ① also indicates when the battery pack is almost flat (see table on page 4).



## Specifications ADN-W BA

Nominal output voltage	7.4 V
Capacity	7800 mAh
Charging voltage	12 V ===
Charging current	2.5 A
Charging time	with a completely discharged battery pack and at room temperature: approx. 100% = typ. 4 hours
Temperature range	operation: +10°C to +45°C storage: -25°C to +70°C Charging: +10 °C to +45 °C
Relative humidity	operation: 20 to 95% storage: 10 to 90%
Dimensions (W x H x D)	approx. 143 x 27 x 124 mm
Weight	approx. 404 g

### In compliance with

Europe	 EMC Safety	EN 301489-1/-17 IEC/EN 62133
USA	UL 1642 UL 2054	Standard for Lithium Batteries Standard for Household and Commercial Batteries
UN transportation test		according to UN Manual of Tests and Criteria, Part III, section 38.3 Lithium-Ion batteries

### Certified by

USA/Canada



Japan



## Manufacturer Declarations

### Warranty

Sennheiser electronic GmbH & Co. KG gives a warranty of 24 months on this product.

For the current warranty conditions, please visit our website at [www.sennheiser.com](http://www.sennheiser.com) or contact your Sennheiser partner.

### In compliance with the following requirements



- Battery Directive (2013/56/EU)  
The supplied rechargeable batteries or batteries can be recycled. Please dispose of them as special waste or return them to your specialist dealer. In order to protect the environment, only dispose of exhausted batteries.



- China RoHS Directive

### CE Declaration of Conformity



- EMC Directive (2014/30/EU)
- RoHS Directive (2011/65/EU)

The declaration is available at [www.sennheiser.com/download](http://www.sennheiser.com/download)

Before putting the product into operation, please observe the respective country-specific regulations.



**Sennheiser electronic GmbH & Co. KG**

Am Labor 1, 30900 Wedemark, Germany  
[www.sennheiser.com](http://www.sennheiser.com)

Printed in Germany, Publ. 08/16, 549137/A03